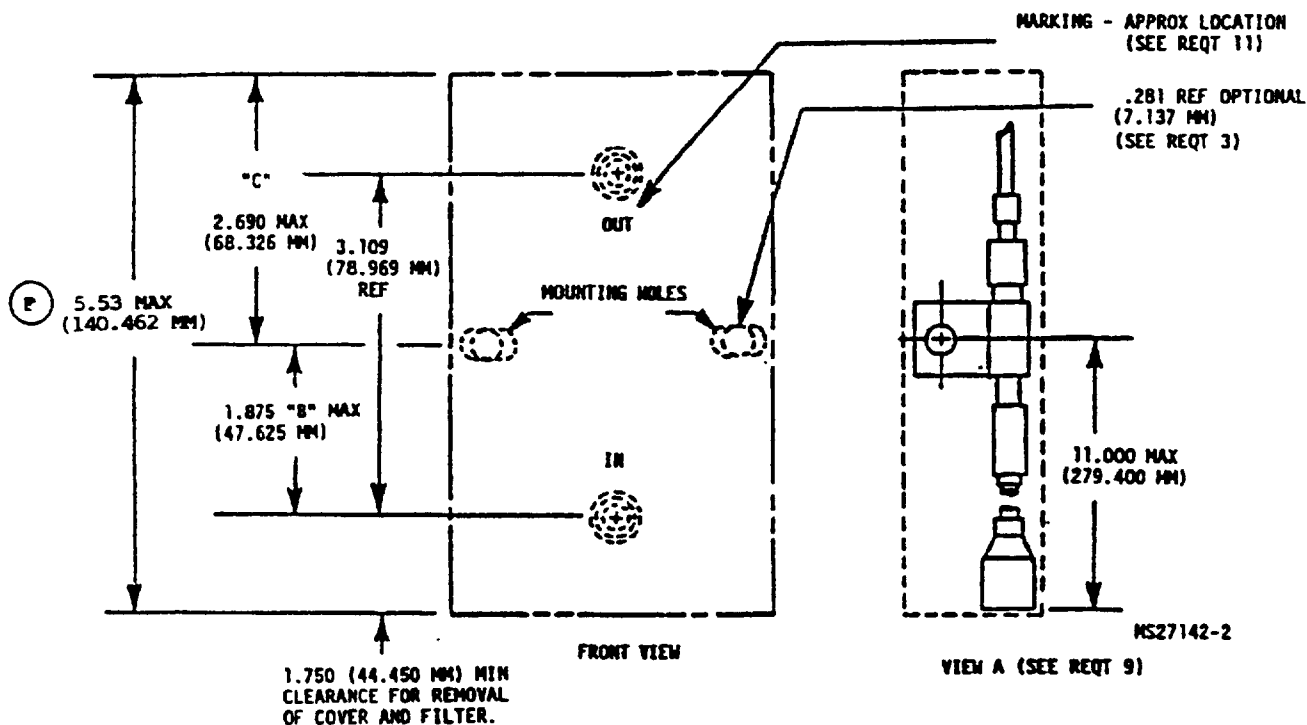
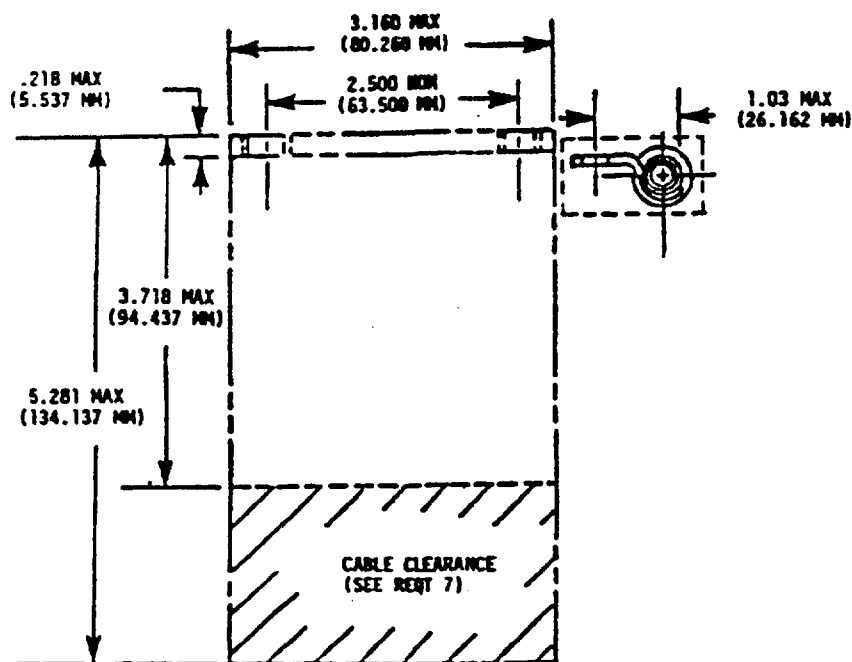


The elements for acquiring the product(s) described herein shall consist of this specification sheet and the issue of the following specification listed in that issue of the DoDiss specified in the solicitation: MIL-P-45328

This specification is approved for use by all Departments and Agencies of the Department of Defense.



Ⓟ DENOTES CHANGES

PREPARING ACTIVITY: ARMY-AT

CUSTODIANS: ARMY- AT NAVY-  
AIR FORCE- 99

REVIEW: ARMY-MI; DLA-CS

USER: NAVY-MC

PROJECT NUMBER: 2910-0198

# MILITARY SPECIFICATION SHEET

TITLE: PUMP, FUEL, ELECTRICAL-  
12 AND 24 VOLT D.C.,  
25 G.P.H. CAPACITY

SPECIFICATION SHEET NUMBER:

MS51321F  
28 FEBRUARY 1991

SUPERSEDING:

MS51321E, 14 APRIL 1989

AMSC-NA

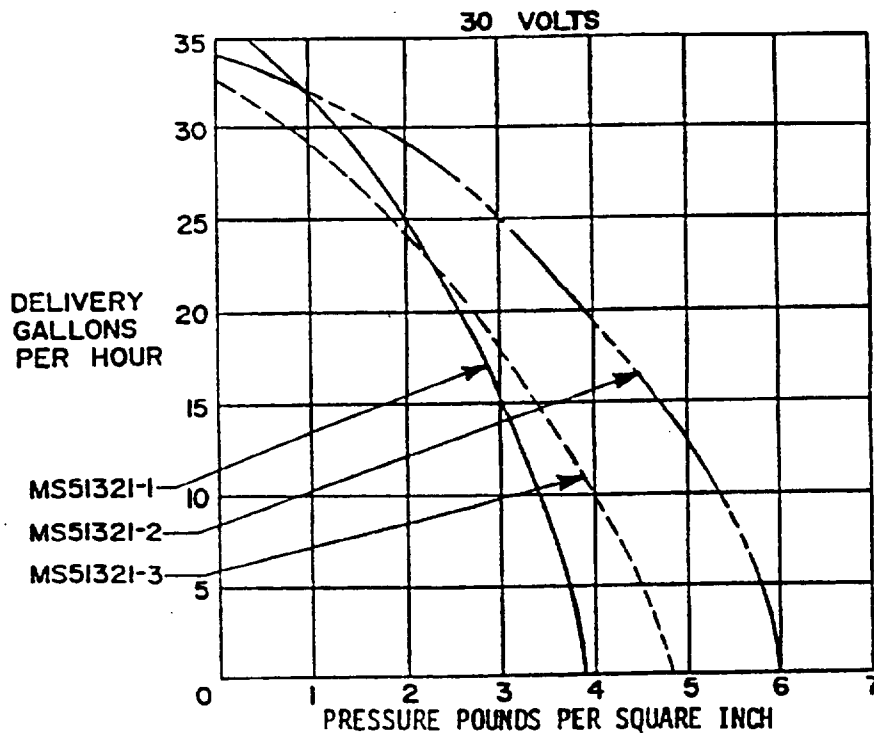
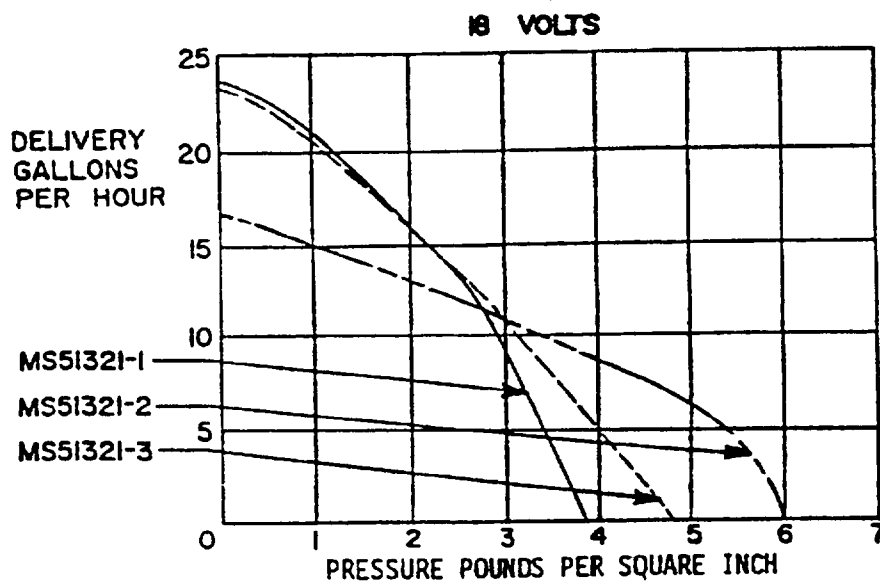
FSC- 2910

DISTRIBUTION STATEMENT A. Approved for public release; distribution is unlimited.

Page 1 of 3

The requirements for acquiring the product(s) described herein shall consist of this specification sheet and the issue of the following specification listed in that issue of the DoDSS specified in the solicitation: MIL-P-45328

This specification is approved for use by all Departments and Agencies of the Department of Defense.



MS PART NO	FORMER PART NO	MAX. OUTPUT-PSI	INLET/OUTLET THREAD
MS51321-1	7392887	4-1/2 <sup>+1/4</sup> / <sub>-1/2</sub>	1/8-27 NPTF FEMALE
MS51321-2	10910278	7:1	1/4-18 NPTF MALE
MS51321-3	10861299	5-1/2 <sup>+1/4</sup> / <sub>-1/2</sub>	1/4-18 NPTF MALE

PREPARING ACTIVITY: ARMY-AT  
CUSTODIANS: ARMY- AT NAVY-  
AIR FORCE- 99  
REVIEW: ARMY-MI; DLA-CS  
USER: NAVY-MI;  
PROJECT NUMBER: 2910-0198

**MILITARY SPECIFICATION SHEET**  
TITLE: PUMP, FUEL, ELECTRICAL-  
12 AND 24 VOLT D.C.,  
25 G.P.H. CAPACITY

SPECIFICATION SHEET NUMBER:  
MS51321F  
28 FEBRUARY 1991  
SUPERSEDING:  
MS51321E, 14 APRIL 1989  
AMSC-NA FSC- 2910

DISTRIBUTION STATEMENT A. Approved for public release; distribution is unlimited.

## REQUIREMENTS:

1. PUMP OUTPUT SHALL MEET MINIMUM REQUIREMENTS SPECIFIED ON APPLICABLE PERFORMANCE CURVES.
2. MOUNTING LOCATION SHALL BE CENTRAL WITH INLET/OUTLET LOCATION WITHIN "B" DIMENSION. MOUNTING LOCATION SHALL BE CENTRAL WITHIN OVERALL HEIGHT WITHIN "C" DIMENSION.
3. PUMP CONFIGURATION MUST ALLOW CLEARANCE, WITHIN ENVELOPE DIMENSIONS FOR INSTALLATION OF PUMP THROUGH MOUNTING HOLES. MOUNTING HOLES MAY BE .281 (7.137 MM) DIAMETER OR .281 BY .344 (7.137 MM BY 8.738 MM) OBLONG.
4. INLET AND OUTLET MUST PROTRUDE FROM PUMP BODY ENOUGH TO FACILITATE MECHANICAL CONNECTION OF FITTINGS.
5. INSTALLATION DESIGN MUST ALLOW .312  $\pm$  .031 INCH (7.92 MM  $\pm$  .790 MM) VARIATION BETWEEN PLANES OF FACES OF INLET AND OUTLET.
6. CABLE SHALL BE NO. 14 AMERICAN WIRE GAUGE (AWG) AND SHALL CONFORM TO MIL-C-13486, TYPE I, CLASS A. WHEN NECESSARY, PART OR ALL OF CABLE MAY CONFORM TO TYPE II, CLASS A OF MIL-C-13486, PROVIDED THAT A SEPARATE CABLE GROUND IS USED, WITH INSTALLATION CLEARANCE AS INDICATED IN VIEW A.
7. CABLE SHALL EXIT PUMP WITHIN, OR BEFORE, AREA MARKED, "CABLE CLEARANCE".
8. CABLE CONNECTOR SHALL CONFORM TO MS27142-2.
9. CABLE AND CABLE GROUND ARE EXTERIOR TO PUMP BODY (SEE VIEW A). INSTALLATION MUST ALLOW FOR CABLE ASSEMBLY CLEARANCE.
10. PROTECTIVE FINISH:
  - A. STEEL SURFACES - ZINC PLATE PER ASTM B633, Fe/Zn 5.
  - B. ZINC SURFACES - CHROMATE TREAT PER MIL-T-12879, TYPE II.
11. MARKING SHALL BE AS INDICATED HEREON AND IN ACCORDANCE WITH PROCUREMENT SPECIFICATION.
 

INLET SHALL BE MARKED "IN" AND OUTLET SHALL BE MARKED "OUT".
12. PART NUMBER SHALL BE FORMULATED TO INDICATED DASH NO., TYPE, VOLTAGE AND POLARITY.

## EXAMPLE OF PART NUMBER:

MS51321 - X - X X X X

DASH NO. 1, 2, OR 3					1 = TYPE I, MIL-P-45320 2 = TYPE II, MIL-P-45328
12 OR 24 VOLT					POSITIVE OR NEG. GROUND

## NOTES:

1. TOLERANCES ON DIMENSIONS ARE .010 FOR INCHES (.254 MM).
2. FOR INFORMATION OTHER THAN AS SHOWN, SEE PROCUREMENT SPECIFICATION.
3. FOR DESIGN FEATURE PURPOSES, THIS STANDARD TAKES PRECEDENCE OVER PROCUREMENT DOCUMENTS REFERENCED HEREIN.
4. THIS STANDARD IS NOT INTENDED TO LIMIT CONSTRUCTION TO FEATURES OTHER THAN AS SHOWN HEREON BY DIMENSIONS, NOTATIONS AND REFERENCED DOCUMENTS.
5. THE USE OF RECYCLED MATERIALS, WHICH MEET THE REQUIREMENTS OF THE APPLICABLE MATERIAL SPECIFICATIONS WITHOUT JEOPARDIZING THE INTENDED USE OF THE ITEM, SHALL BE ENCOURAGED.
6. REFERENCED DOCUMENTS SHALL BE OF THE ISSUE IN EFFECT ON DATE OF INVITATION FOR BIDS OR REQUEST FOR PROPOSAL.

PREPARING ACTIVITY: ARMY-AT

CUSTODIANS: ARMY- AT NAVY-  
AIR FORCE- 99

REVIEW: ARMY-MI; DLA-CS

USER: NAVY-MI;

PROJECT NUMBER: 2910-0198

## MILITARY SPECIFICATION SHEET

TITLE: PUMP, FUEL, ELECTRICAL-  
12 AND 24 VOLT D.C.,  
25 G.P.H. CAPACITY

SPECIFICATION SHEET NUMBER:

MS51321F  
28 FEBRUARY 1991

SUPERSEDING:

MS51321E, 14 APRIL 1989

AMSC-NA

FSC- 2910