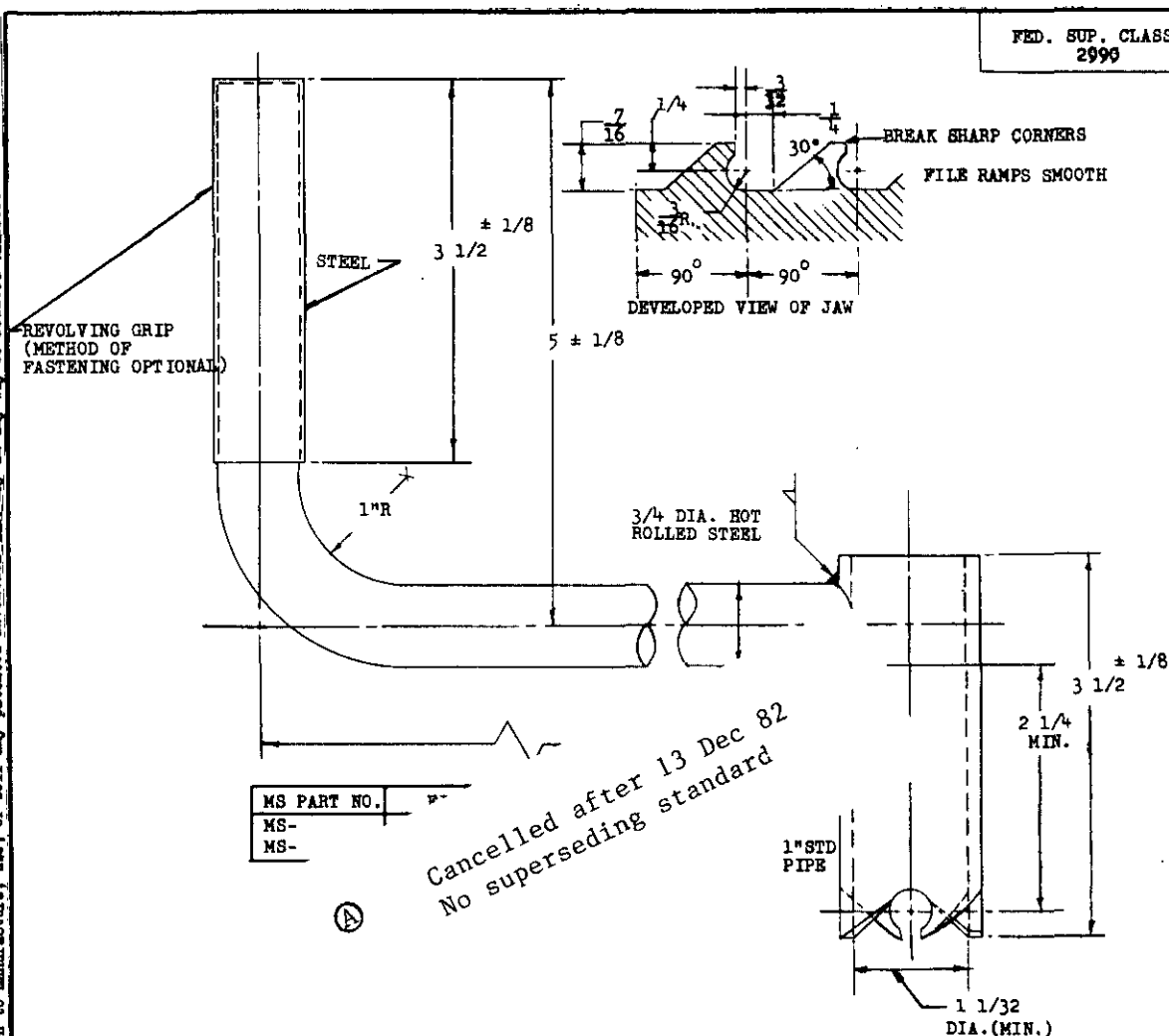


This military standard is approved by the Department of Defense and is mandatory on all activities. Selection for all new engineering and design applications and for repetitive use shall be made from this document.

NOTES: When Government drawings, specifications, or other data are used for any purpose other than in connection with a definite related Government procurement operation, the United States Government thereby incurs no responsibility, nor any obligation whatsoever, and the fact that the Government may have furnished, furnished, or in any way supplied the said drawings, specifications, or other data is not to be regarded by implication or otherwise as in any manner licensing the holder or any other person or corporation, or conveying any rights or permission to manufacture, use, or sell any patented invention that may in any way be related thereto.



NOTE: DRAWING SHOWS ONLY FUNCTIONAL INTERCHANGEABILITY AND NOT NECESSARILY TYPE OF CONSTRUCTION.

ALL DIMENSIONS ARE IN INCHES.

UNLESS OTHERWISE SPECIFIED TOLERANCE SHALL BE $\pm 1/64$

MATERIAL, FINISH AND PAINT SHALL BE IN ACCORDANCE WITH MANUFACTURER'S STANDARD PRACTICE.

THIS DOCUMENT HAS BEEN PROMULGATED BY THE DEPARTMENT OF DEFENSE AS THE MILITARY STANDARD TO LIMIT THE SELECTION OF THE ITEM, PRODUCT, OR DESIGN COVERED HEREIN IN ENGINEERING, DESIGN AND PROCUREMENT. THIS STANDARD SHALL BECOME EFFECTIVE NOT LATER THAN 90 DAYS AFTER THE LATEST DATE OF APPROVAL SHOWN.

P.A. CE	MILITARY STANDARD		MS51309	
Other Cust Docks USAF	CRANK, HAND; ENGINE STARTING, JAW TYPE FOR 160 CU. IN. AND BELOW, INDUSTRIAL ENGINES			
PROCUREMENT SPECIFICATION NONE	SUPERSEDES:		SHEET	1 OF 1

DD FORM 1 OCT 82 672-1

* U.S. GOVERNMENT PRINTING OFFICE: 1983-605-034-440

APPROVED 21 MAY 1959 REVISED 13 December 1982