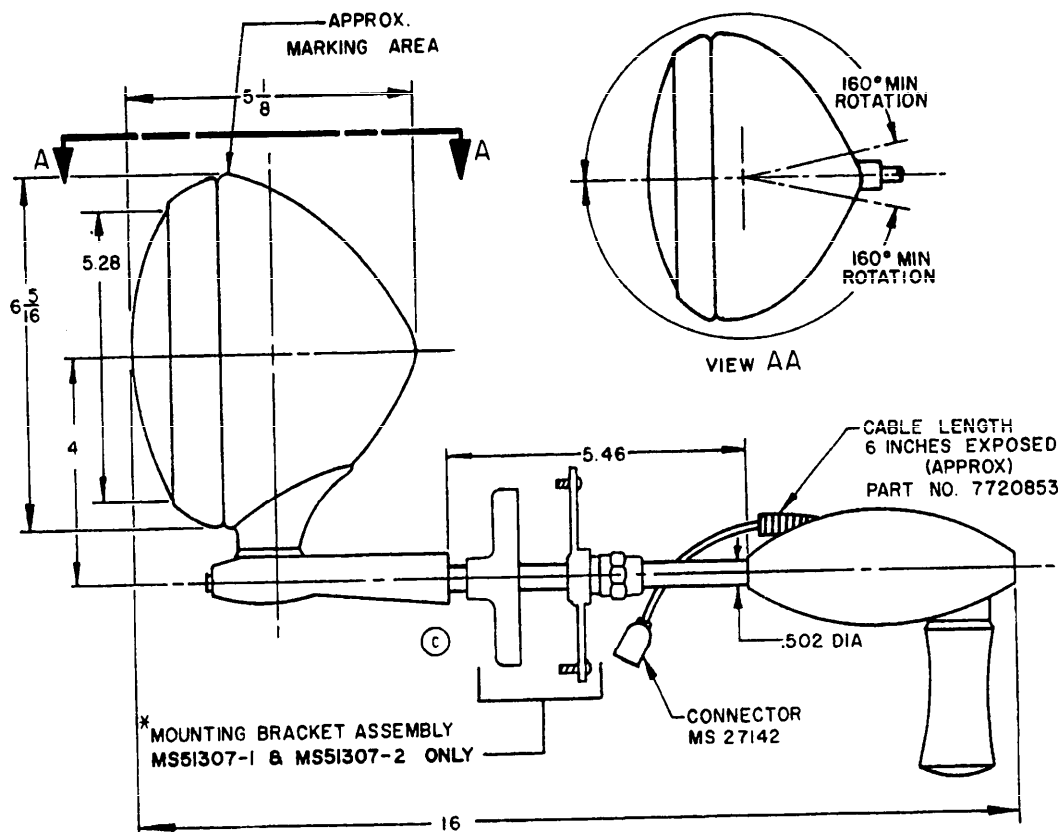


FED. SUP CLASS
6220

User activities:

Review activities:

AF - 84 & 85



NOTES:

LAMP CHARACTERISTICS:

1. CRYSTAL GLASS, SEALED BEAM TYPE, PAR 46, 50 WATTS, 24 VOLT.
2. LAMP BEAM PATTERN SHALL BE WELL DEFINED AND SUBSTANTIALLY ROUND OR OVAL IN SHAPE.

GENERAL:

3. DIMENSIONS SHOWN ARE IN INCHES AND ARE FOR ENGINEERING REFERENCE ONLY.
4. MOUNTING DETAILS TO BE IN ACCORDANCE WITH DRAWING 7015044.
5. MARKING SHALL CONSIST OF THE MS PART NUMBER AND MANUFACTURER'S IDENTIFICATION IN ACCORDANCE WITH MIL-STD-130.
6. FOR DESIGN FEATURE PURPOSES, THIS STANDARD TAKES PRECEDENCE OVER PROCUREMENT DOCUMENTS REFERENCED HEREIN.
7. REFERENCED DOCUMENTS SHALL BE OF THE ISSUE IN EFFECT ON DATE OF INVITATION FOR BID.
8. THIS STANDARD IS NOT INTENDED TO LIMIT CONSTRUCTION TO FEATURES OTHER THAN AS SHOWN HEREON BY DIMENSIONS, NOTATIONS OR REFERENCED DOCUMENTS.

(C) DENOTES CHANGES

	MS PART NO.	
	WITH MOUNTING BRACKET	W/O MOUNTING BRACKET
DESCRIPTION		
WATERPROOF	MS51307-1	MS51307-3
SPLASH RESISTANT	MS51307-2	MS51307-4

P.A. MO (ATAC)

Other Cust
NAVY - MC
AF - 84

TITLE

SPOTLIGHT-24 VOLT, DC

MILITARY STANDARD

MS 51307

PROCUREMENT SPECIFICATION
MIL-S-45337

SUPERSEDES:

MS 51307 (ORD)

SHEET 1 OF 1

DD FORM 1 SEP 57 672-1 (Coordinated)

PREVIOUS EDITIONS OF THIS FORM ARE OBSOLETE.

6220-0334

This military standard has been approved by the Department of Defense and is mandatory for use by all Departments and Agencies of the Department of Defense. Selection for all new engineering and design applications and for repetitive use shall be made from this document."

DISTRIBUTION STATEMENT A. Approved for public release; distribution is unlimited.

APPROVED 13 MAY 1959 REVISED (A) 6 NOVEMBER 1960 (B) 20 JUNE 1966 (C) 30 MAY 85