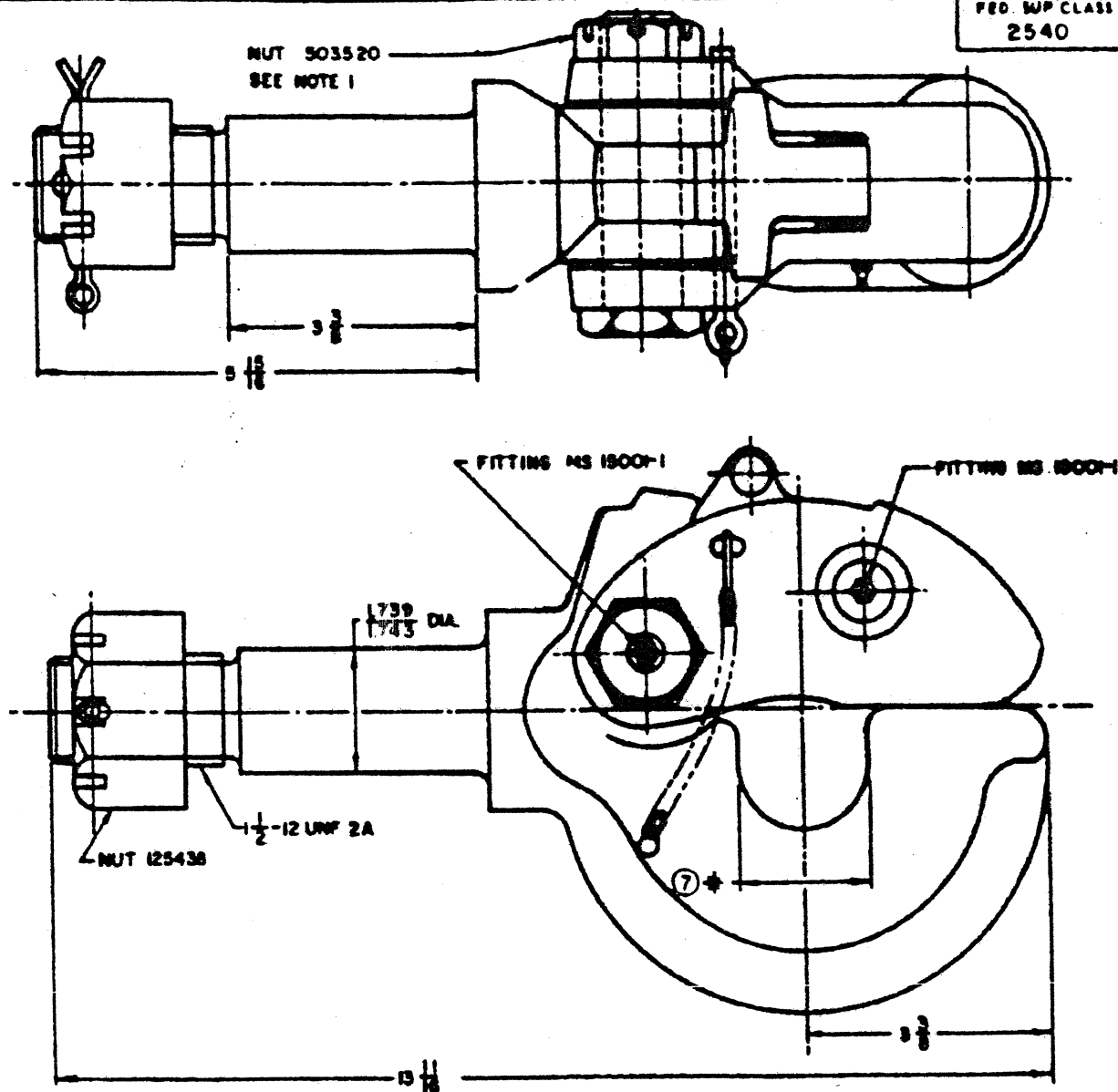


FED. WP CLASS  
2540REVIEW ACTIVITIES ARMY-WC  
USER ACTIVITIES ARMY-ME; NAVY-MC

(F)

## NOTES:

1. NUT SHALL BE CADMIUM PLATED IN ACCORDANCE WITH QQ-P-416, TYPE II, CLASS 1.
2. DIMENSIONS SHOWN ARE IN INCHES AND ARE FOR ENGINEERING REFERENCE ONLY.
3. THREADS SHALL BE IN ACCORDANCE WITH SCREW THREAD STANDARDS FOR FEDERAL SERVICES, HANDBOOK H26.
4. REFERENCE DOCUMENTS SHALL BE OF THE ISSUE IN EFFECT ON DATE OF INVITATIONS FOR BID.
5. FOR DESIGN FEATURE PURPOSES, THIS STANDARD TAKES PRECEDENCE OVER PROCUREMENT DOCUMENTS REFERENCED HEREIN.
6. MARKING SHALL CONSIST OF THE MS PART NUMBER AND THE MANUFACTURER'S IDENTIFICATION IN ACCORDANCE WITH MIL-STD-130.
7. APPLICABLE PROVISION OF ABC AIR STD 11/B, QSTAG-264 AND STANAG 4101 IS MARKED\*. THIS DIMENSION SHALL BE OF SUCH SIZE THAT IT WILL ACCEPT A 3 BY 1 5/8 INCH LUNETTE. (SEE MILITARY DESIGN STANDARD MS51336.)

\* CERTAIN PROVISIONS OF THIS STANDARD ARE THE SUBJECT OF INTERNATIONAL STANDARDIZATION AGREEMENT STANAG 4101, WHEN REVISION OR CANCELLATION OF THIS STANDARD IS PROPOSED WHICH WILL AFFECT OR VIOLATE THE INTERNATIONAL AGREEMENT CONCERNED, THE PREPARING ACTIVITY WILL TAKE APPROPRIATE RECONCILIATION ACTION THROUGH INTERNATIONAL STANDARDIZATION CHANNELS, INCLUDING DEPARTMENTAL STANDARDIZATION OFFICES, IF REQUIRED.

MS PART NO.	ENGRG PARTS LIST
MS 51118-1	7760103

P.A. ARMY-AT Other Code NAVY-YD AF-84	INTERNATIONAL INTEREST *	TITLE <b>PINTLE ASSEMBLY, TOWING: 40,000 LBS. CAPACITY, MANUAL RELEASE</b>	<b>MILITARY STANDARD</b> <b>MS 51118</b>
PROCUREMENT SPECIFICATION NONE	SUPERSEDES	SHEET 1 OF 1	

DD FORM 672-1 (Continued)

PREVIOUS EDITIONS OF THIS FORM ARE OBSOLETE

This military standard is mandatory for use by all Departments and Agencies of the Department of Defense. Selection for all new engineering and design applications and for repetitive use shall be made from this document.

REVISED OCT 1968  
REVISED 16 JANUARY 1967  
REVISED 30 JANUARY 1966  
REVISED 30 MAY 1972