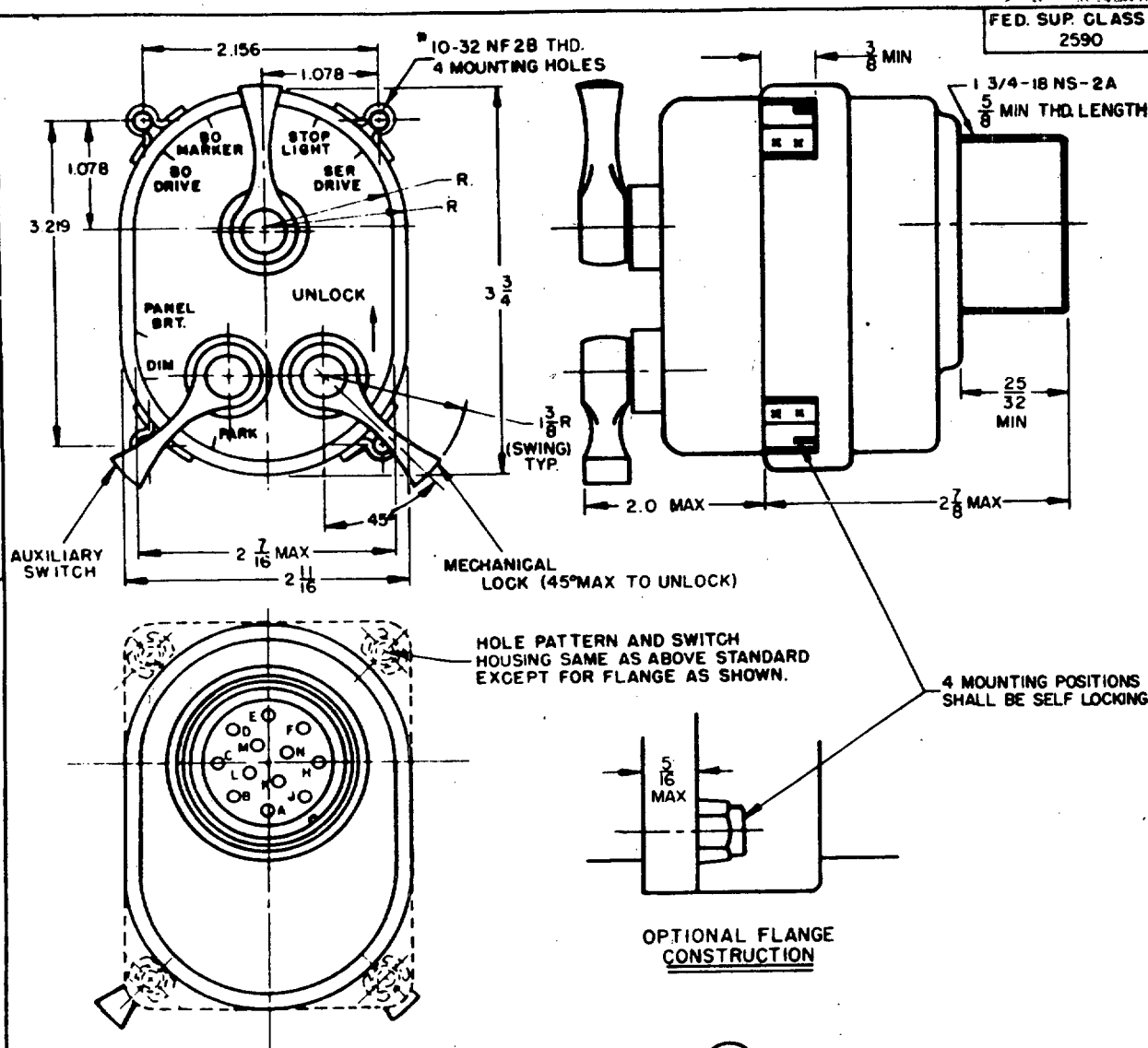


REVIEW ACTIVITIES: NAVY-YD; AF-84; DSA-CS
 USER ACTIVITIES: NAVY-MC; ARMY-RE

This standard is approved for use by all Departments and Agencies of the Department of Defense. Selection for all new engineering and design applications and for repetitive use shall be made from this document.



NOTES:

TOLERANCES:

1. UNLESS OTHERWISE SPECIFIED, DIMENSIONS ARE IN INCHES: TOLERANCES $\pm 1/64$ ON FRACTIONS; ± 0.005 ON DECIMALS, $\pm 5^\circ$ ON ANGULAR DIMENSIONS.

THREADS:

2. SHALL BE IN ACCORDANCE WITH SCREW THREAD STANDARDS FOR FEDERAL SERVICES, HANDBOOK H28

GENERAL NOTES:

3. THIS STANDARD TAKES PRECEDENCE OVER DOCUMENTS REFERENCED IN NOTES.
4. REFERENCED DOCUMENTS SHALL BE OF THE ISSUE IN EFFECT ON DATE OF INVITATION FOR BID.
5. FOR INFORMATION OTHER THAN AS SHOWN HEREON, SEE PROCUREMENT SPECIFICATION.
6. THIS STANDARD IS NOT INTENDED TO LIMIT CONSTRUCTION TO FEATURES OTHER THAN SHOWN HEREON BY DIMENSIONS, NOTATIONS AND REFERENCED DOCUMENTS.

SEE MS SHEET 2 FOR SWITCH POSITION AND CONNECTOR DATA

P.A. AT Other Cast
AIR FORCE-84
PROCUREMENT SPECIFICATION MIL-S-11021

SUPERSEDES:

MILITARY STANDARD

SWITCH, VEHICULAR LIGHTS:
24 VOLT DC; (WATERPROOF)

MS PART NO	FORMER PART NO
MS 51113 -I	ORD 7368702

MS 51113

SHEET 1 OF 2

DD FORM 1 OCT 57 672-1

2590-0160

APPROVED 5 AUG 58
 REVISED (A) 8 MARCH 1963 (B) 7 MARCH 1975 (C) 1 JULY 1976

FED. SUP. CLASS
2590SWITCH POSITION DATAOFF POSITION - MAIN SWITCH - ALL CIRCUITS OPEN

BLACKOUT MARKER POSITION - MAIN SWITCH
 BATTERY TO BLACKOUT MARKER AND CLEARANCE LAMPS.
 BATTERY TO BLACKOUT TAIL LAMP.
 BATTERY TO FEED TO BLACKOUT TURN INDICATOR SWITCH.
 BATTERY TO FEED TO STOP LAMP SWITCH.

STOP LAMP SWITCH (DEAD SIDE) TO BLACKOUT STOP LAMP.
 AUXILIARY SWITCH CAN BE MOVED TO OFF, DIM OR BRIGHT
 PANEL LAMPS.

BLACKOUT DRIVE POSITION - MAIN SWITCH
 BATTERY TO BLACKOUT MARKER AND CLEARANCE LAMPS.
 BATTERY TO BLACKOUT TAIL LAMP.
 BATTERY TO FEED TO BLACKOUT TURN INDICATOR SWITCH.
 BATTERY TO FEED TO STOP LAMP SWITCH.
 BATTERY TO BLACKOUT DRIVING LAMP.
 STOP LAMP SWITCH (DEAD SIDE) TO BLACKOUT STOP LAMP.
 AUXILIARY SWITCH CAN BE MOVED TO OFF, DIM OR
 BRIGHT PANEL LAMPS.

STOP LIGHT POSITION - MAIN SWITCH
 BATTERY TO FEED TO SERVICE TURN INDICATOR SWITCH.
 BATTERY TO FEED TO STOP LAMP SWITCH.
 STOP LAMP SWITCH (DEAD SIDE) TO SERVICE STOP LAMP.
 AUXILIARY SWITCH CAN BE MOVED TO OFF, DIM OR BRIGHT
 PANEL LAMPS.

SERVICE DRIVE POSITION - MAIN SWITCH
 BATTERY TO FEED TO SERVICE TURN INDICATOR SWITCH.
 BATTERY TO FEED TO STOP LAMP SWITCH.
 BATTERY TO SERVICE TAIL LAMP.
 BATTERY TO CLEARANCE LAMP.
 BATTERY TO SERVICE HEAD LAMPS.
 STOP LAMP SWITCH (DEAD SIDE) TO SERVICE STOP LAMP.
 AUXILIARY SWITCH CAN BE MOVED TO PARKING LAMPS,
 PLUS DIM PANEL LAMPS OR SERVICE HEADLAMPS WITH
 OFF, DIM OR BRIGHT PANEL LAMPS.

12 PIN CONNECTOR (28-51P)	
PIN	CONNECTS TO:
A	STOP LAMP SWITCH
B	PANEL LAMPS
C	SERVICE STOP LAMP
D	BLACKOUT DRIVING LAMP
E	BLACKOUT CLEARANCE LAMP
	BLACKOUT MARKER LAMP
	BLACKOUT TURN INDICATOR L&R
	BLACKOUT TAIL LAMP
F	BATTERY
H	SERVICE TAIL LAMP
	SERVICE CLEARANCE LAMP
J	SERVICE TURN INDICATOR L&R
K	STOP LAMP SWITCH (DEAD SIDE)
L	PARKING LAMPS
M	SERVICE HEADLAMP
N	BLACKOUT STOP LAMP

P.A.
Other Cust**MILITARY STANDARD**
 SWITCH, VEHICULAR LIGHTS:
 24 VOLT DC; (WATERPROOF)

PROCUREMENT SPECIFICATION SUPERSEDES:

MS PART NO	FORMER PART NO
MS 51113-1	ORD 7368702

MS 51113

SHEET 2 OF 2

REVISED (C) SEE SHEET 1

APPROVED 5 AUG. 58