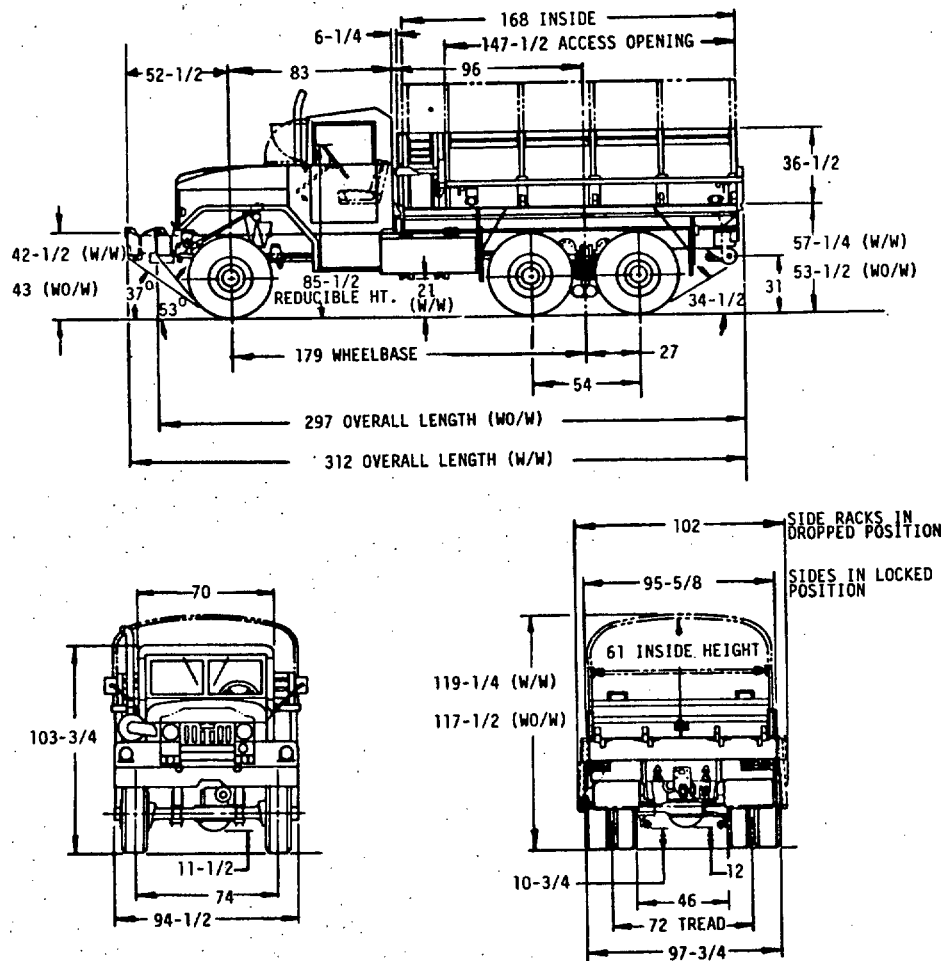


FED. SUP CLASS
2320

USER ACTIVITIES:

REVIEWER ACTIVITIES:

This military standard is approved for use by the US Army Tank-Automotive Command, Department of the Army, and is available for use by all Departments and Agencies of the Department of Defense.



(B) ENTIRE STANDARD REVISED

MS PART NO.	ENGINEERING DRAWING NO.	DESCRIPTION
MS 500096-1	8736734	WITH WINCH
MS 500096-2	8736732	LESS WINCH

P. A. ARMY-AT Other Cust	INTERNATIONAL INTEREST	TITLE TRUCK, CARGO DROPSIDES, 5 TON, 6 X6, 179 INCH WHEELBASE, MILITARY DESIGN, M 54 A 2 C	MILITARY STANDARD MS500096(AT)
PROCUREMENT SPECIFICATION MIL-T-740	SUPERSEDES:	SHEET 1 OF 2	

VEHICLE CHARACTERISTICS

FED. SUP CLASS
2320

CHASSIS: M40A2D
WITH WINCH 8736512
WITHOUT WINCH 8736511

CURB WEIGHT: FULLY EQUIPPED LESS CREW
AND PAYLOAD

	WO/WINCH	W/WINCH
FRONT AXLE	7740	8720 LBS
REAR AXLE (BOGIE)	12060	11940 LBS
TOTAL	19800	20660 LBS

PAYLOAD:

CROSS COUNTRY	10000 LBS
HIGHWAY	20000 LBS

GROSS WEIGHT: FULLY EQUIPPED PLUS PAY-
LOAD AND CREW (HWY)

	WO/WINCH	W/WINCH
FRONT AXLE	8910 LBS	9890 LBS
REAR BOGIE	31290 LBS	31170 LBS
TOTAL	40200 LBS	41060 LBS

TOWED ALLOWANCE:

CROSS COUNTRY	15000 LBS
HIGHWAY	30000 LBS

***FORDING DEPTH:** W/KIT 78 IN.
WO/KIT 30 IN.

CARGO BODY: INST'N 8758001
CARGO BODY ASSY: 7410065

CAB ASSEMBLY: 10883174-1
CAB SUPPORT INST'N: 11593192-4

TOOL BOX: INST'N. 10871459

GENERAL:

THIS VEHICLE IS USED TO TRANSPORT GENERAL CARGO OR PERSONNEL. THE CAB IS CANVAS COVERED, OPEN TYPE. THE BODY IS 14 FT. (168 X 88 IN. INSIDE) FLAT TYPE, STEEL CONSTRUCTION. SIDES AND TARPULIN FRAMES ARE REMOVABLE, 14 IN. SIDES, 19-3/8 INCH TAILGATE, 61 INCH FLOOR TO UNDERSIDE OF BOWS. COMPLETE WITH SIDE RACKS, TARPS, AND SEATS.

BODY: 11593372

THIS CARGO BODY IS THE SAME AS THAT OF THE M54A2 EXCEPT FOR THE DROPSIDES. REMOVABLE SIDE RACKS, TROOP SEATS, AND MARINE CORPS VEHICLE LIFTING FIXTURES ARE PROVIDED.

POWER PLANT: LDS465 1A INST'N 10938275-1

ENGINE: MULTIFUEL, 478 CU. IN. 10951400
SIX CYLINDER. 4.56 BORE X 4.87 STROKE
BRAKE HP 180 @GOVERNED SPEED 2800RPM
FUEL TANK: 78 GAL. CAP. INST'N 10938398
EXHAUST SYSTEM, VERTICAL INST'N 11593176
AIR CLEANER, ENGINE INST'N 10938336

TRANSMISSION: 8333627

FORWARD SPEEDS, FIVE
RATIOS: 7.31, 4.08, 2.41, 1.43, 1.00
REVERSE, ONE, 7.33 : 1

TRANSFER: INST'N 10899367

RATIOS: HIGH 1:1 LOW 2.024:1 7748580

FRONT SUSPENSION: INST'N 10971261

FRONT AXLE 7346805
SHOCK ABSORBERS, TWO 7409617
FRONT SPRINGS, TWO 7409345

FRAME ASSY: CHASSIS 11611785

TIE DOWNS: 16 WITH WINCH 10883223
14 WITHOUT WINCH

REAR SUSPENSION: INST'N 10883209
REAR AXLE ASSY., TWO 8327007
REAR SPRINGS., TWO 7409613
TORQUE ROD ASSY., SIX 8728126

WHEELS: 20 X 7.5-OFFSET 6-11/16 MS53044-6
RING, WHEEL MS53045-3

TIRES: 11.00 X 20, 12 PLY, TEN MS53388-21
TUBE, TEN MS53392-15

TREAD DESIGN, NDCC
NUMBER OF SPARE, ONE

STEERING: CONTROL INST'N 8758369
STEERING GEAR 8728230

BRAKES: A/H SYSTEM INST'N 10938410-1.
DRUM SIZE, 16-1/2 X 5-1/2
ACTUATION, AIR/HYDRAULIC

BRAKES: PARK. CONTROL, INST'N 11608810-1
DRUM SIZE, 14 X 3 MOUNTED
ON REAR OF TRANSFER

ELECTRICAL SYSTEM:

WATERPROOF AND RADIO SUPPRESSED
POTENTIAL, 24 VOLT
BATTERIES, TWO; 6 TN, 12 VOLT MS35000-4
STARTING MOTOR 10911018-1
GENERATOR 7355736
REGULATOR MS51356-1
WIRING DIAGRAM 10938485
WIRING INST'N 10938386-2

REFLECTORS:

RED, FOUR MS35387-1
AMBER, FOUR MS35387-2

PERFORMANCE: MAXIMUM SPEED, 54 MPH WIT-
HOUT TOWED LOAD

FUEL	MPG	CRUISING RANGE, HWY.
DIESEL	5.3	350
C.I.E.	4.83	318
GASOLINE	4.39	290

WINCH: INST'N 11658711-1
WINCH; 20000 LB CAPACITY, MS51353-1

PINTLE: INST'N. 10883506
HIGHWAY, CAPACITY, 30000 LBS.
PINTLE MS51117-1

KIT PROVISIONS:

FORDING KIT	11593175
PERSONNEL HEATER KIT	10932106
THERMAL BARRIER KIT	10938249
PERSONNEL HEATER, HOT WATER	10938450
HARDTOP CLOSURE KIT	7354276
ELECTRIC BRAKE KIT	5701909
A FRAME, FOR VEHICLES W/W	8390117
AIR BRAKE KIT	8758174
POWER PLANT HEATER KIT	10938375
KIT, SLAVE RECEPTACLE	7358646

BOW AND TARP KIT 11672523

FRONT BUMPER: W/WINCH INST'N 10883120
W/O WINCH INST'N 10883138

REAR BUMPER: INST'N 10883138

MIRROR ASSEMBLY:

REAR VIEW, RIGHT: 11611649
REAR VIEW, LEFT: 11611835
MIRROR ASSY, REAR VIEW: MS53015-2

NOTES:

- DIMENSIONS ARE IN INCHES AND ARE SHOWN FOR ENGINEERING REFERENCE ONLY.
- REFERENCED DOCUMENTS SHALL BE OF THE ISSUE IN EFFECT ON DATE OF INVITATIONS FOR BID.
- THIS VEHICLE SHALL BE IN ACCORDANCE WITH REFERENCED ENGINEERING DRAWINGS, COPIES OF WHICH MAY BE OBTAINED FROM: US ARMY TANK-AUTOMOTIVE COMMAND, WARREN MICH. 48090.

MS PART NO.	ENGINEERING DRAWING NO.	DESCRIPTION
MS 500096-1	8736734	WITH WINCH
MS500096-2	8736732	LESS WINCH

P. A. ARMY-AT Other Cost	INTERNATIONAL INTEREST	TITLE TRUCK, CARGO DROPSIDES, 5 TON, 6 X 6, 179 INCH WHEELBASE, MILITARY DESIGN, M 54 A2 C	MILITARY STANDARD MS500096(AT)
PROCUREMENT SPECIFICATION MIL-T-740		SUPERSEDES:	SHEET 2 OF 2

USER ACTIVITIES:

REVIEWER ACTIVITIES:

This military standard is approved for use by the US Army Tank-Automotive Command, Department of the Army, and is available for use by all Departments and Agencies of the Department of Defense.