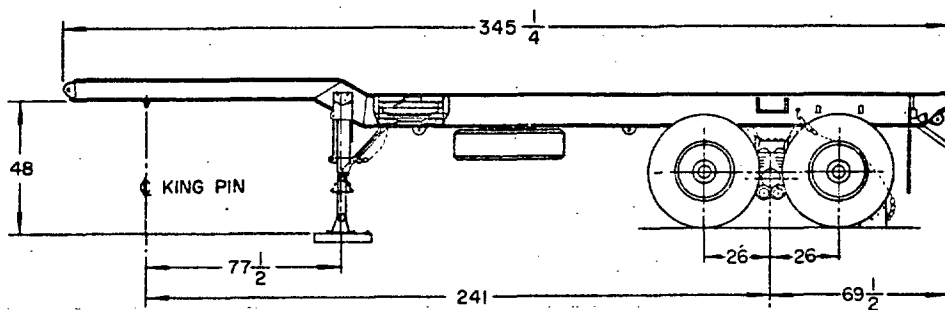
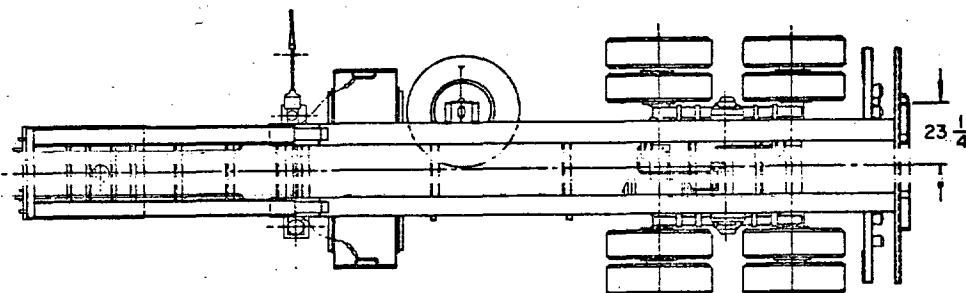
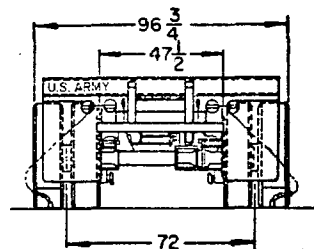
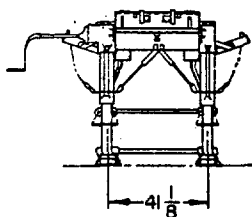
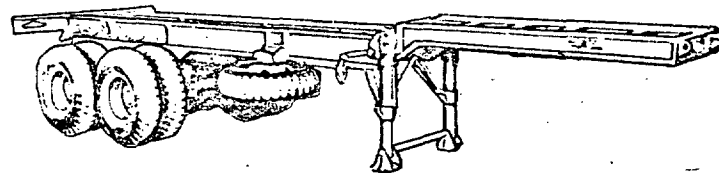


A6

REVIEW ACTIVITIES:
USER ACTIVITIES: ARMY- ME

(A) CANCELLED AFTER 20 AUGUST 1973

CERTAIN PROVISIONS OF THIS STANDARD, IDENTIFIED BY AN ASTERISK (*) ARE THE SUBJECT OF INTERNATIONAL STANDARDIZATION AGREEMENT NATO STANAG 2805-A (EDITION 3). WHEN REVISION OR CANCELLATION OF THIS STANDARD IS PROPOSED WHICH WILL AFFECT OR VIOLATE THE INTERNATIONAL AGREEMENT CONCERNED, THE PREPARING ACTIVITY WILL TAKE APPROPRIATE RECONCILIATION ACTION THROUGH INTERNATIONAL STANDARDIZATION CHANNELS, INCLUDING DEPARTMENTAL STANDARDIZATION OFFICES, IF REQUIRED.

DIMENSIONS ARE IN INCHES AND ARE SHOWN
FOR ENGINEERING REFERENCE ONLY.

MS PART NO.	ENGINEERING PARTS LIST
MS500089 - I	8736683

P.A. ARMY-AT Other Cust NAVY-MC AF-84	International Interest	TITLE CHASSIS, SEMITRAILER, 12 TON, 4 WHEEL, MILITARY DESIGN, M126A2C	MILITARY STANDARD MS 500089
PROCUREMENT SPECIFICATION MIL-C-45314	SUPERSEDES:	SHEET 1 OF 2	

DD FORM 672-1 (COORDINATED)

PREVIOUS EDITIONS OF THIS FORM ARE OBSOLETE.

APPROVED 3 APRIL 1968 REVISED (A) 20 AUGUST 1973

This military standard is mandatory for use by all Departments and Agencies of the Department of Defense. Selection for all new engineering and design applications and for repetitive use shall be made from this document.

90

VEHICLE CHARACTERISTICS

CURB WEIGHT: 7500 LBS

WEIGHT DISTRIBUTION: CHASSIS ONLY
KING PIN 1830 LBS
AXLE 5670 LBSMAXIMUM WEIGHT: INCLUDING BODY AND PAYLOAD
WITH PAYLOAD EVENLY DISTRIBUTED

	C/C	HWY.
KING PIN	14730 LBS.	19750 LBS.
AXLE	24670 LBS.	31650 LBS.
TOTAL	39400 LBS.	51400 LBS.

KING PIN: 2 INCH DIAMETER MS 53036-1

*FORDING DEPTH: 55 INCHES

FRAME: REINFORCED, DROP 8724534
SIDE RAIL; WIDE FLANGE BEAM 12x6-1/2x27LB/FT
SECTION MODULUS - 34.1 INCHES
CROSS MEMBERS - 13

STEP: INSTL 10944735

BUMPER ASSEMBLY: REAR 7018988-1

LANDING GEAR: 8724594 MS 53092-1

BOARD ASSEMBLY: TWO 7417585

RETAINER, MUD FLAP: TWO 8722139

MUD FLAP: TWO 8739106

OUT RIGGER: FRONT 8739459

ELECTRICAL: INSTL 10920550

POTENTIAL, 12 VOLTS AND 24 VOLTS	
SUPPORT ASSEMBLY, RIGHT HAND	10920586-1
SUPPORT ASSEMBLY, LEFT HAND	10920586-2
RECEPTACLE ASSEMBLY 24 VOLTS	8683490
RECEPTACLE ASSEMBLY 12 VOLTS	10935044
LAMP ASSEMBLY	TWO 10920548
LAMP ASSEMBLY 8741645	ONE MS 51302-1
LAMP ASSEMBLY 8378785	TWO MS 51329-1

SUSPENSION: CAPACITY 36000 LBS

BOGIE ASSEMBLY: 10950340 MS 35866-A4

AXLE: FRONT AND REAR TWO 10950341

TRUNNION ASSEMBLY: 7979355

SPRINGS: 7979217

TORQUE ROD ASSEMBLY: 7979189

WHEELS: INC RING - DUAL MS 53044-6
SIZE; 20 X 7.5 OFFSET 6-11/16
RING MS 53045-3TIRES: EIGHT, ONE SPARE MS 35388-21
SIZE; 11.00 X 20 12 PLY
TREAD; NDCC

TUBES: MS 35392-15

CARRIER ASSEMBLY: SPARE TIRE 11625029

BLOCK ASSEMBLY: CHOCK TWO 7979235

BRAKE: AIR/HYDRAULIC INSTL 8739454-1

SIZE - 16-1/2 X 5-1/2	10950318
LINE ASSEMBLY, LEFT	10950319
LINE ASSEMBLY, RIGHT	6169300
RESERVOIR, AIR	TWO 8742616
CHAMBER ASSEMBLY	TWO MS 35746-1
COUPLING ASSEMBLY	MS 53004-1
RELAY VALVE	TWO 7411022
CLEANER ASSEMBLY	8710721
HUB AND DRUM ASSEMBLY, LEFT HAND	8710722
HUB AND DRUM ASSEMBLY, RIGHTHAND	

MAXIMUM TOWING SPEED:

CROSS COUNTRY 20 M.P.H.
HIGHWAY 50 M.P.H.TIE DOWNS: EIGHT 7979180
TWO EACH S'DE, TWO FRONT, TWO REAR(FOR DESIGN FEATURE PURPOSES, THIS
STANDARD TAKES PRECEDENCE OVER PRO-
CUREMENT DOCUMENTS REFERENCED HEREIN.)(REFERENCED DOCUMENTS SHALL BE OF THE
ISSUE IN EFFECT ON DATE OF INVITATIONS
FOR BID.)THIS VEHICLE SHALL BE IN ACCORDANCE
WITH DRAWINGS IN REFERENCED ENGINEER-
ING PARTS LIST, COPIES OF WHICH MAY
BE OBTAINED FROM;U. S. ARMY TANK-AUTOMOTIVE COMMAND
WARREN, MICHIGAN 48090This military standard is mandatory for use by all Departments and Agencies of the
Department of Defense. Selection for all new engineering and design applications
and for repetitive use shall be made from this document.

P.A. ARMY-AT	International Interest	TITLE	MILITARY STANDARD
Other Cust NAVY-MC AF-84		CHASSIS, SEMITRAILER, 12 TON, 4 WHEEL, MILITARY DESIGN, M126A2C	MS500089
PROCUREMENT SPECIFICATION MIL-C-45314	SUPSEDES:		SHEET 2

DD FORM 672-1 (COORDINATED)

PREVIOUS EDITIONS OF THIS FORM ARE OBSOLETE.

APPROVED 3 APRIL 1968 REVISED (A) FOR CHANGES SEE SHEET 1