

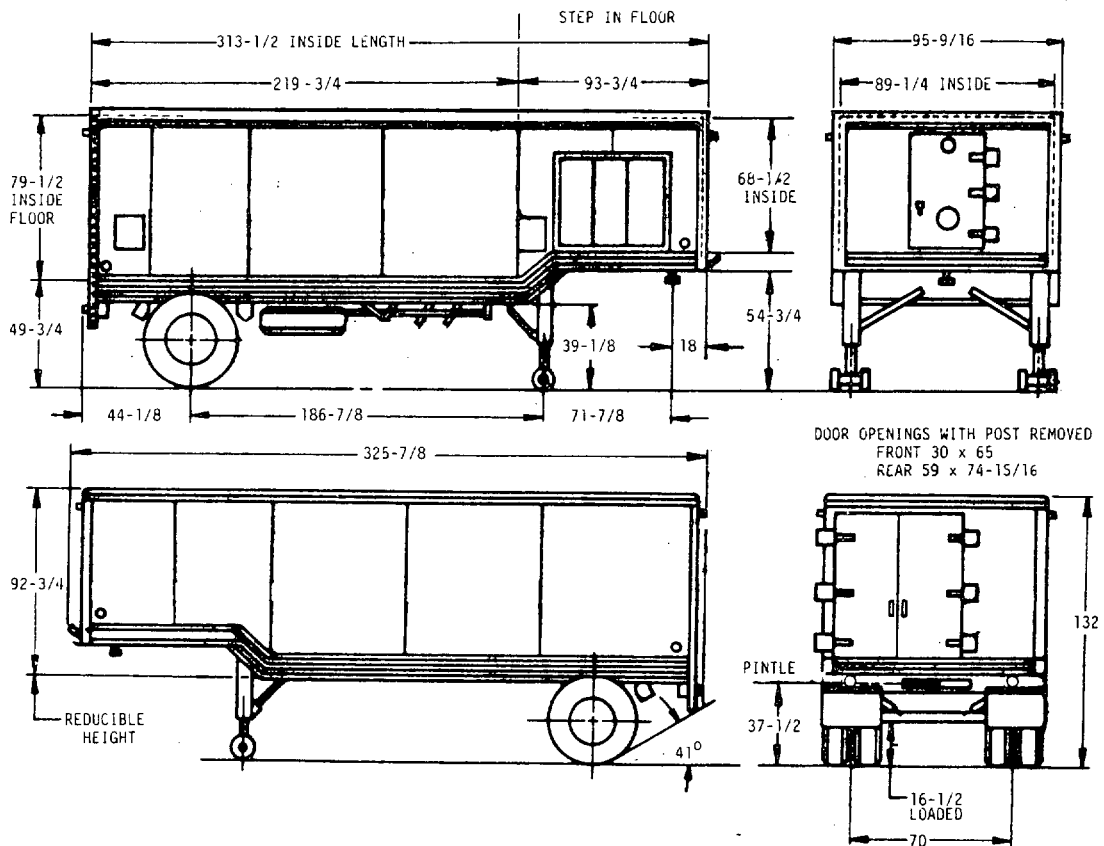
FED. SUP CLASS
2330

USER ACTIVITIES:

REVIEWER ACTIVITIES:

This military standard is approved for use by the US Army Tank-Automotive Command, Department of the Army, and is available for use by all Departments and Agencies of the Department of Defense.

DISTRIBUTION STATEMENT A. Approved for public release; distribution is unlimited.



(C) ENTIRE STANDARD REVISED

P. A. ARMY-AT Other Cust	INTERNATIONAL INTEREST	TITLE SEMITRAILER, VAN: ELECTRONIC, TACTICAL, 6 TON, 2 WHEEL, 26 FT, M348A2H	MS PART NO. MS 500082-1	ENGINEERING DWG NO. 8736437
PROCUREMENT SPECIFICATION MIL-S-46714			MILITARY STANDARD MS500082(AT)	
SUPERSEDES:			SHEET 1	OF 2

DD FORM 672-1 LIMITED COORDINATION
1 MAY 73

PREVIOUS EDITIONS OF THIS FORM ARE OBSOLETE

APPROVED 24 MAY 1967 REVISED 13 MAR 85

VEHICLE CHARACTERISTICS

FED. SUP CLASS
2330

GENERAL USAGE: SEMITRAILER VAN IS USED TO TRANSPORT AND HOUSE ELECTRONIC EQUIPMENT OVER ALL TYPES OF ROADS AND LIMITED CROSS-COUNTRY TERRAIN.

LANDING GEAR: ADJUSTABLE, CRANK OPERATED.

GENERAL: M348A2H IS A MODIFIED M348A2 VAN EQUIPPED WITH THREE COMPACT, LIGHT-WEIGHT AIR CONDITIONER UNITS. THE CURB-SIDE DOOR HAS BEEN REMOVED AND AN OPENING ADDED, LOCATED AT FRONT, CURBSIDE OF VAN BODY. FOR INSTALLATION OF THE AIR CONDITIONERS, A DOOR HAS ALSO BEEN ADDED IN THE FRONT WALL OF VAN BODY.

VEHICLE ELECTRICAL SYSTEM: 24 VOLT SYSTEM, LIGHTING SYSTEM AND REFLECTORS COMPLY WITH DOT. FMVSS NO 108.

PIN TIE: ONE, AT REAR, CENTER, P/N MS51335-1, CAPACITY 14000 LBS

AIR CONDITIONERS: THREE, ELECTRIC POWER; 208 VOLT, 3 PHASE, 400 CYCLE.

LIFTING EYES: TOTAL QUANTITY - FOUR: TWO FRONT (ONE EA SIDE), TWO REAR (ONE EA SIDE). PULL OUT/PUSH IN TYPE. LIFTING EYES EXCEED MIL-STD-209 REQUIREMENTS FOR SEMITRAILER, VAN, WITH RATED PAYLOAD.

UNIT DIMENSIONS: 17 IN. WIDE, 21-1/16 DEEP, 45-1/2 HIGH
UNIT CAPACITY: 18000 BTU/HR
OPERATING TEMPERATURE CONDITIONS:
COOLING CYCLE, +50 F TO +125 F
HEATING CYCLE, -65 F TO +80 F
TOTAL CAPACITY: 3 UNITS, 54000 BTU/HR CONFORMING TO MIL-A-52344

RAIL CAR TIE DOWNS: TOTAL QUANTITY - SIX; FOUR ON DOLLY FRAME (TWO EA SIDE), TWO ON UNDERCARRIAGE, FRONT (ONE EA SIDE);

ALSO FOR AIRCRAFT TIE DOWN OF DOLLY ASSEMBLY.

PRIME MOVER: TRUCK, TRACTOR, 5-TON, 6 X 6, M52 SERIES OR M818 SERIES.

AIRCRAFT VAN BODY TIE DOWNS: TOTAL QUANTITY - 12; TWO FRONT, FOUR EA SIDE, AND TWO REAR. VAN BODY WITH RATED PAYLOAD CAN BE TIED DOWN TO MEET APPLICABLE REQUIREMENTS OF MIL-A-8421.

CURB WEIGHT: (W/MISC EQUIPMENT) 10780 LBS.

PAYLOAD: 12000 LBS.

FORDING DEPTH (W/AIR CONDITIONER OPENING SEALED): FIVE FEET.

WEIGHT DISTRIBUTION: SEMITRAILER COUPLED TO TRUCK AND EMPTY:
KINGPIN 4255 LBS.
REAR AXLE 6525 LBS.

MAXIMUM TOWING SPEEDS:
PAVED HIGHWAY 55 MPH
GRAVEL AND DIRT (SEC. RDS.) 30 MPH
BELGIAN BLOCK 20 MPH
LEVEL CROSS-COUNTRY 30 MPH
HILLY CROSS-COUNTRY 30 MPH

WEIGHT DISTRIBUTION: SEMITRAILER COUPLED TO TRUCK PAYLOAD EVENLY DISTRIBUTED.

TIRE SIZE: 9.00 X 20, 8 PLY, W/TUBE, NUCC TREAD DESIGN.

LOADED
KINGPIN 8378 LBS
REAR AXLE 14402 LBS

SUSPENSION: LEAF SPRINGS.

MISCELLANEOUS EQUIPMENT:

LEVELING JACKS: TWO, REAR, ONE EACH SIDE: TO BE USED IN CONJUNCTION WITH LANDING GEAR.

CHOCK BLOCKS 2
BOARDING LADDERS 1, 3 STEP
1, 4 STEP
MANUAL BOX 1
MUD PLATES, LANDING GEAR 2
DOOR PADLOCKS 3, KEYS ALIKE
LANDING GEAR CRANK HANDLE 1
LEVELING JACK PADS 2
LEVELING JACK CRANK HANDLES 2

DOLLY: REMOVABLE, W/SPARE TIRE ASSEMBLY, W/ONE AXLE ASSEMBLY.

DOOR HINGES: TAMPER PROOF.

INTERIOR LIGHTS: 110 VOLT FLUORESCENT, QUANTITY - THREE.

AXLE RATING: (TACTICAL). CAPACITY 14000 LBS.

VAN BODY ASSEMBLY: ALUMINUM CONSTRUCTION, WATERTIGHT, AND AIR TIGHT. VAN BODY IS PROVIDED WITH TWO VENTS AND IS INSULATED WITH URETHANE FOAM INSULATION. COMPOSITE THERMAL CONDUCTIVITY OF VAN IS: .23 BTU/HR/SF/F. EXTERIOR SKIN IS ALUMINUM. THE FLOOR IS LINOLEUM OVER 3/4 INCH THICK PLYWOOD.

WHEELS: DUAL, SIZE 20 X 7-1/5, 6-1/4 OFFSET.

BRAKE SIZE: 16-1/2 X 5-1/2.

BRAKES ACTUATION: AIR-OVER HYDRAULIC SERVICE.

KINGPIN: TWO INCH DIAMETER, STD.

REAR DOOR POST: REMOVABLE.

DOOR LOCKS: ON INBOARD SURFACE OF DOORS (TAMPER RESISTANT), SIDE DOOR WITH ESCAPE - TYPE DOOR LOCK PERMITTING OPENING OF DOOR FROM INSIDE EVEN WHEN DOOR IS PADLOCKED FROM OUTSIDE.

SPARE TIRE HOLDER: HAS CAPABILITY TO LIFT UP/LET DOWN SPARE TIRE ASSEMBLY, USING PRIME MOVER'S SPARE TIRE WRENCH.

RADIO FREQUENCY SHIELDING: LOW DECIBEL ATTENUATION BETWEEN 15KHZ - 18GHZ

NOTES:

1. DIMENSIONS ARE IN INCHES AND ARE SHOWN FOR ENGINEERING REFERENCE ONLY.
2. REFERENCED DOCUMENTS SHALL BE OF THE ISSUE IN EFFECT ON DATE OF INVITATIONS FOR BID.
3. THIS VEHICLE SHALL BE IN ACCORDANCE WITH REFERENCED ENGINEERING DRAWINGS, COPIES OF WHICH MAY BE OBTAINED FROM: US ARMY TANK-AUTOMOTIVE COMMAND, WARREN MICH. 48090.
4. SUBJECT OF NATO STANAG 2805 - A (EDITION 3). DO NOT REVISE OR CHANGE.

MS PART NO.	ENGINEERING DWG NO
MS 500082-1	8736437

P. A. ARMY-AT Other Cust	INTERNATIONAL INTEREST	TITLE SEMITRAILER, VAN: ELECTRONIC, TACTICAL, 6 TON, 2 WHEEL, 26 FT, M348A2H	MILITARY STANDARD MS500082(AT)
PROCUREMENT SPECIFICATION MIL-S-46714	SUPERSEDES:	SHEET 2 OF 2	

DD FORM 672-1 LIMITED COORDINATION

PREVIOUS EDITIONS OF THIS FORM ARE OBSOLETE

USER ACTIVITIES

REVIEWER ACTIVITIES

This military standard is approved for use by the US Army Tank-Automotive Command, Department of the Army, and is available for use by all Departments and Agencies of the Department of Defense.

DISTRIBUTION STATEMENT A. Approved for public release; distribution is unlimited.

APPROVED 24 MAY 1967 REVISED C 13 MAR 85