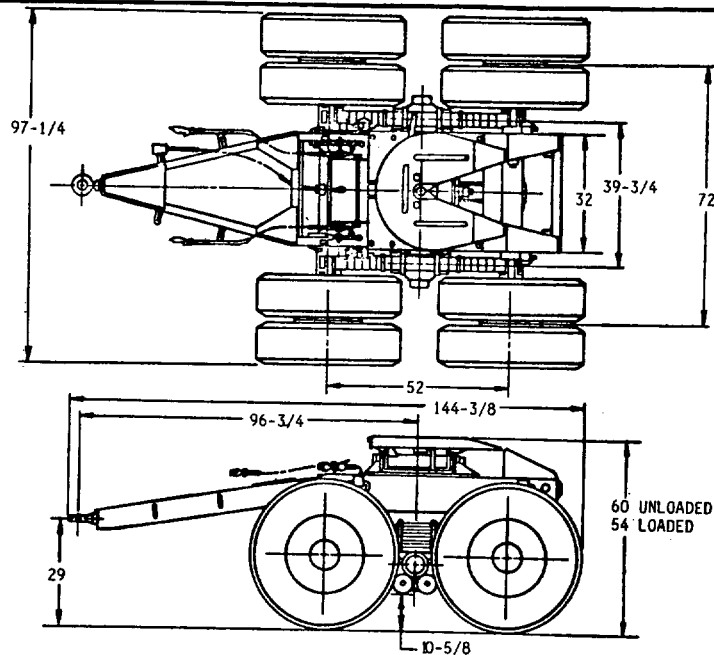


FED. SUP CLASS
2330

VEHICLE CHARACTERISTICS

CURB WEIGHT: 6100 LBS.
 LESS PAYLOAD AND PERSONNEL
 LUNETTE 100
 BOGIE 6000
 TOTAL 6700 LBS.

GROSS LOAD:
 PAYLOAD 30000 LBS.
 LOADED 36100 LBS.

TOWED LOAD, MAXIMUM:
 LOADED 30000 LBS.

DOLLY, TRAILER CONVERTER: 15 TON, 4 WHEEL, M354, IS USED TO CONVERT A SEMITRAILER INTO A FULL TRAILER AND PERMIT TRANSPORTING BY ANY PRIME MOVER. THE TRAILER DOLLY CONSISTS OF A FRAME, MOUNTING A FIFTH WHEEL FOR COUPLING TO THE SEMITRAILER, AND IS MOUNTED ON DUAL TANDEM AXLES WITH DUAL WHEELS AND SPRING CHASSIS. A DRAWBAR AND LUNETTE ARE PROVIDED AT THE FRONT OF THE FRAME FOR TOWING THE VEHICLE EITHER INDEPENDENTLY OR COUPLED TO A SEMITRAILER. NO LANDING GEAR IS REQUIRED. THE DOLLY IS EQUIPPED WITH AIRBRAKE SYSTEM AND ELECTRICAL SYSTEM.

FIFTH WHEEL ASSY: 10950712
 SWIVEL PLATE ASSY 10950713
 BASE PLATE WELDMENT 10950715
 LEVELING SPRING, TWO 8713973
 PIN ASSY 10950698

LUNETTE: MS51337-1
 DRAWBAR ASSY 10950705
 CHAIN ASSY., SAFETY, TWO 11592588
 U BOLT ASSY., FOUR 11592587

REAR SUSPENSION: INSTL 10950340
 REAR AXLE, TWO 10950341
 REAR SPRINGS, TWO 7979217
 TORQUE ROD ASSY., SIX 7979189
 TRUNNION TUBE ASSY 7979355

FRAME ASSY: 10950661
 RAMP ASSY., LEFT HAND 10950693
 RAMP ASSY., RIGHT HAND 11592578
 CROSS MEMBER, REAR 10950665
 RING, LIFTING & TIE DOWN, FOUR 8379604

WHEELS: DUAL, INCL RING, EIGHT MS53044-6
 SIZE, 7.5 X 20, OFFSET 6-11/16
 RING MS53045-3

TIRES: EIGHT MS35388-21
 SIZE, 11.00 X 20, 12 PLY
 TREAD DESIGN, NDCC

TUBES: MS35392-15

AIR AND HYDRAULIC: INSTL 10950739
 TANK ASSY., AIR 11597380
 VALVE, EMERGENCY, RELAY MS53004-1
 COUPLING, HOSE, TWO MS35746-1
 AIR CLEANER, TWO 7097063
 HUB AND DRUM ASSY., LEFT HAND 8710721
 HUB AND DRUM ASSY., RIGHT HAND 8710722
 BRAKE SIZE, 16-1/2 X 5-1/2

ELECTRICAL SYSTEM: INSTL 10950748
 POTENTIAL, 24 VOLT
 STOPLIGHT, BLACKOUT MS51302-1
 LIGHT ASSY., STOP, TURN, TAIL
 TWO MS51329-1
 RECEPTACLE AND LEADS ASSY 10950707
 HARNESS ASSY., TAILLAMP 10950749
 HARNESS ASSY., INTERVEHICULAR 7728812

REFLECTORS: RED, FOUR MS35387-1

NOTES:

1. DIMENSIONS ARE IN INCHES AND ARE SHOWN FOR ENGINEERING REFERENCE ONLY.
2. REFERENCED DOCUMENTS SHALL BE OF THE ISSUE IN EFFECT ON DATE OF INVITATIONS FOR BID.
3. THIS VEHICLE SHALL BE IN ACCORDANCE WITH REFERENCED ENGINEERING DRAWINGS. COPIES OF WHICH MAY BE OBTAINED FROM: US ARMY TANK-AUTOMOTIVE COMMAND, WARREN, MICH. 48090.

(A) ENTIRE STANDARD REVISED

P. A. ARMY-AT INTERNATIONAL INTEREST

Other Cust

TITLE
 DOLLY, TRAILER CONVERTER, 15 TON,
 4 WHEEL, MILITARY DESIGN, M354

PROCUREMENT SPECIFICATION
 MIL-D-45322

SUPERSEDES:

MS PART NO. **ENGINEERING**
DWG NO
 MS 500081-1 8736308

MILITARY STANDARD

MS500081(AT)

SHEET | OF |

USER ACTIVITIES:

REVIEWER ACTIVITIES:

This military standard is approved for use by the US Army Tank-Automotive Command, Department of the Army, and is available for use by all Departments and Agencies of the Department of Defense.