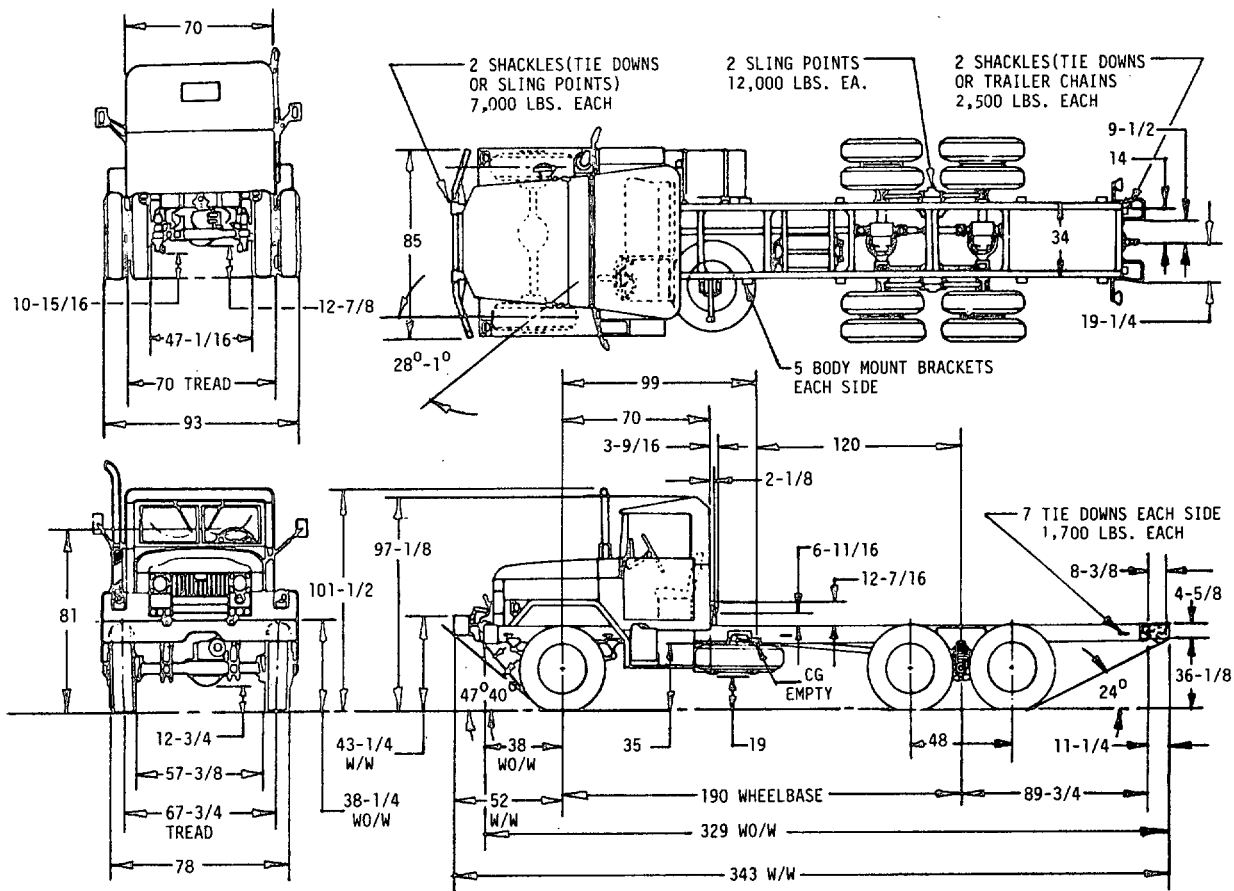


FED. SUP CLASS
2320

NOTES:

1. DIMENSIONS ARE IN INCHES AND ARE SHOWN FOR ENGINEERING REFERENCE ONLY.
2. REFERENCED DOCUMENTS SHALL BE OF THE ISSUE IN EFFECT ON DATE OF INVITATIONS FOR BID.
3. THIS VEHICLE SHALL BE IN ACCORDANCE WITH REFERENCED ENGINEERING DRAWINGS, COPIES OF WHICH MAY BE OBTAINED FROM: US ARMY TANK-AUTOMOTIVE COMMAND, WARREN, MICH. 48090.
- *4. SUBJECT OF NATO STANAG 2805-A (EDITION 3) DO NOT REVISE OR CHANGE.

© ENTIRE STANDARD REVISED

MS PART NO.	ENGINEERING DRAWING	DESCRIPTION
MS 500076-1	8736603	WITH WINCH
MS 500076-2	8736573	LESS WINCH

P.A. ARMY-AT
Other CustTITLE CHASSIS, TRUCK: MILITARY MODEL
M46A2C, 2 1/2 TON, 6x6, 190 INCH
WHEELBASE, MULTIFUEL ENGINE

MILITARY STANDARD

MS500076(AT)

PROCUREMENT SPECIFICATION
MIL-T-46780

SUPERSEDES:

SHEET 1 OF 2

FED. SUP CLASS
2320

VEHICLE CHARACTERISTICS

CURB WEIGHT: FULLY EQUIPPED, LESS PAYLOAD
AND CREW. W/O/W W/W
FRONT AXLE 6,400 LBS 7,030 LBS
REAR AXLE OR BOGIE 5,470 LBS 5,360 LBS
TOTAL 11,870 LBS 12,390 LBS

PAYLOAD:
NET (INCL BODY) LOADED
8,000 LBS 8,000 LBS

TOWED LOAD MAXIMUM: W/O/W W/W
LOADED 6,000 LBS 6,000 LBS

(REFERENCED WEIGHTS ARE FOR INFORMATION ONLY)

MINIMUM TURNING RADIUS: OVER BUMPER
W/O/W W/W
LEFT 500 IN 518 IN
RIGHT 488 IN 498 IN

*FORDING DEPTH: W/KIT 72 IN
W/O/KIT 30 IN

ENGINE: COMPLETE, 11642105
W/CLUTCH 11642117
MODEL: LDT-465-1C, MULTIFUEL
NO. OF CYLINDERS: SIX IN LINE
DISPLACEMENT: 478 CU. IN
BORE: 4.56 IN
STROKE: 4.88 IN
COMPRESSION RATIO: 22:1
GOVERNED SPEED: 2600 RPM
MAXIMUM TORQUE LB FT: 305 AT 1500 RPM
MAXIMUM BHP: 130, NET 118 AT 2600 RPM

CLUTCH PEDAL: INST'N 8757745
CLUTCH DRIVEN MEMBER ASSY 11668332
CLUTCH ASSY 11601174

TRANSMISSION ASSY: W/W 10872194
W/O/W 10872096
TYPE: SYNCHROMESH
FORWARD SPEEDS: 5, REVERSE: 1
GEAR RATIOS:
FORWARD: 5.02:1, 2.78:1, 1.62:1,
1:1, .79:1
REVERSE: 4.90:1

TRANSFER CASE: CONTROL INST'N 10937636
TRANSFER CASE ASSY. 11609224
GEAR RATIOS:
HIGH 1:1
LOW 1.98:1

FRAME COMPLETE 11609287-1
SIDE RAIL: 8 X 3 X 5/16,
SECTION MODULUS: 9.04 IN³

FRONT SUSPENSION: INST'N 10872040
FRONT AXLE 7521734-1
FRONT SPRINGS, 2, 11601335
SHOCK ABSORBERS, 2, 7539007

PERFORMANCE: (W/DIESEL FUEL)
MILES PER GALLON: 6
CRUISING RANGE, HIGHWAY 300 MILES
MAXIMUM SPEED 56 MPH AT 2600 RPM

ADDITIONAL EQUIPMENT AVAILABLE:
FORDING KIT 11609777
CLOSURE ASSEMBLY, HARDTOP 7354276
ARCTIC HEATER KIT, PERSONNEL 10896381
A-FRAME KIT, DERRICK 8390117
SLAVE RECEPTACLE KIT 10896518

REAR SUSPENSION: INST'N 8757834
REAR AXLE, 2, 7368511
REAR SPRINGS, 2, 7368629
TORQUE ROD ASSY., 6, 8757685

TIE DOWNS: TOTAL, 14, 11647735
LOCATION: 7 EACH SIDE,
SHACKLE 2 FRONT, 2 REAR 7539662

WHEELS: TYPE-STEEL DISC, 7389620
20" DIA X 7-1/2" WIDE
FRONT-SINGLE, REAR-DUAL, OFFSET 6-1/4

TIRES: WITH FLAP & TUBE MIL-T-12459
STYLE A, SIZE 9 X 20 8 PLY
TREAD DESIGN: NON-DIRECTIONAL CROSS COUNTRY
NO. SPARES-1, NO ON VEHICLE-10

TUBES: SIZE 9 X 20 ZZ-1 -550

CAB ASSEMBLY: SOFT TOP 10896757

STEERING: INST'N 10897162

INSTRUMENT PANEL: INST'N 10937450

TACHOMETER: INST'N 10896303

SPEEDOMETER: INST'N 10937442

THROTTLE LINKAGE: INST'N 10896671-1

AIR CLEANER: INST'N 10896886-1

MIRROR ASSEMBLY: REAR VIEW 10937793

FUEL SYSTEM: INST'N 10897080

EXHAUST SYSTEM: INST'N 11677097

WINCH: INST'N 10872197
WINCH 7538687

PINTLE: 7722050-1
PINTLE HOOK 11609011

AIR/HYDRAULIC: AIR INST'N 11647739
HYD INST'N 10937705-2

DRUM SIZE: FRONT 15 X 3
REAR 15 X 3

HAND BRAKE: INST'N 11609817
BRAKES, PARKING, DRUM SIZE 14 X 3
FRONT HUB AND DRUM ASSY LH 7529053
FRONT HUB AND DRUM ASSY RH 7529054
REAR HUB AND DRUM ASSY LH 8757681
REAR HUB AND DRUM ASSY RH 8757682

ELECTRICAL SYSTEM: INST'N 10896899
POTENTIAL: 24 VOLTS
STARTING MOTOR
ALTERNATOR: 60 AMPS 1092986
BATTERIES: 2, 12 VOLTS, 6TN MS35000-4
TURN SIGNAL, REGULATOR 11613631
LIGHTING: HEAD LAMPS 8741462
B.O. DRIVING LAMPS 11668932
TRAILER COUPLING SOCKET 8376209
COMPOSITE LIGHT, FRONT 11614156
COMPOSITE LIGHT, TAIL 11614157

MS PART NO.	ENGINEERING DRAWING	DESCRIPTION
MS 500076 -1	8736603	WITH WINCH
MS 500076-2	8736573	LESS WINCH

© ENTIRE STANDARD REVISED

P.A. ARMY-AT Other Cust	TITLE CHASSIS, TRUCK: MILITARY MODEL M46A2C, 2 1/2 TON, 6x6, 190 INCH WHEELBASE, MULTIFUEL ENGINE	MILITARY STANDARD MS500076(AT)
PROCUREMENT SPECIFICATION MIL-T-46780	SUPERSEDES:	SHEET 2 OF 2

DD FORM 672-1 LIMITED COORDINATION
1 SEP 57

PREVIOUS EDITIONS OF THIS FORM ARE OBSOLETE.

This military standard is approved for use by the US Army Tank-Automotive Command,
Department of the Army, and is available for use by all Departments and Agencies
of the Department of Defense.

APPROVED 13 FEBRUARY 1967 REVISED © 20 MAY 85