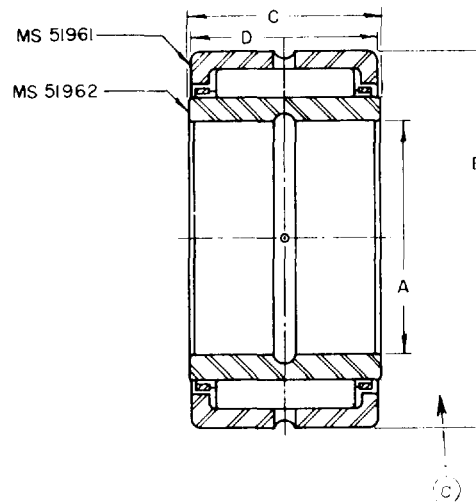


A-2

FED. SUP CLASS  
3110

## NOTES:

1. THESE BEARING ASSEMBLIES CONSIST OF (1) AN OUTER RACE, WITH ROLLERS AND RETAINER, SELECTED FROM MS51961; AND (2) A CORRESPONDING INNER RACE, SELECTED FROM MS51962.
2. THE ASSEMBLIES SHALL BE MADE UP IN MATING SETS AS SPECIFIED IN THE TABLE ON SHEET 2.
3. THESE BEARINGS ARE INTENDED TO BE USED ON UNHARDENED SHAFTS. TAPER IN SHAFT SHALL NOT EXCEED .0005 INCH PER INCH OF BEARING LENGTH.
4. LOAD CAPACITIES AND SPEED LIMITS SHALL BE AS SHOWN ON MS51961.
5. DIMENSIONS ARE IN INCHES AND ARE FOR ENGINEERING REFERENCE ONLY.
6. FOR DESIGN FEATURE PURPOSES, THIS STANDARD TAKES PRECEDENCE OVER DOCUMENTS REFERENCED HEREIN.
7. REFERENCED DOCUMENTS SHALL BE OF THE ISSUE IN EFFECT ON DATE OF INVITATIONS FOR BID.
8. THE MS PART NUMBER SHALL CONSIST OF THE MS NUMBER PLUS THE DASH NUMBER. EXAMPLE: MS 500072-1
9. MARKING SHALL CONSIST OF THE MS PART NUMBER AND THE MANUFACTURER'S IDENTIFICATION IN ACCORDANCE WITH MIL-STD-130.

(C) FOR CHANGES SEE SHEETS 1 AND 2

APPROVED 19 DECEMBER 1966 REVISED (A) 21 NOVEMBER 1967 (B) 20 MAY 1969 (C) 24 JANUARY 1975

P. A. ARMY-AT Other Cust NAVY- OS AF- 11	TITLE  BEARING, ROLLER, NEEDLE : ASSEMBLY (THICK OUTER RACE)	MILITARY STANDARD  MS500072
PROCUREMENT SPECIFICATION NONE	SUPERSEDES:	SHEET 1 OF 2

REVIEW ACTIVITIES: ARMY-AV, ME, MI; AF-54 / DSA-13  
USER ACTIVITIES: NAVY-WO, YD / ARMY-WO, MI, GL

This military standard is mandatory for use by all Departments and Agencies of the Department of Defense. Selection for all new engineering and design applications and for repetitive use shall be made from this document.

FED. SUP CLASS  
3110

(c)

FOR ACTUAL SIZES & TOLERANCES  
SEE MS51961 AND MS51962

MS DASH NUMBER	"A" NOM	"B" NOM	"C" NOM	"D" NOM	MS51961 DASH NO.	MS51962 DASH NO.
1	3/8	1 1/8	3/4	3/4	1	1
2	1/2	1 1/4	3/4	3/4	2	2
3	1/2	1 1/4	1	1	3	3
4	5/8	1 3/8	3/4	3/4	5	4
5	3/4	1 1/2	3/4	3/4	8	5
6	13/16	1 1/2	3/4	3/4	8	6
7	13/16	1 1/2	1	1	9	7
8	7/8	1 5/8	1	1	11	8
9	15/16	1 5/8	1	1	11	9
10	1	1 3/4	1	1	14	10
11	1	1 3/4	1 1/4	1 1/4	15	11
12	1 1/8	1 7/8	1	1	18	12
13	1 1/8	1 7/8	1 1/4	1 1/4	19	13
14	1 3/16	2 1/16	1 1/4	1 1/4	22	14
15	1 1/4	2 1/16	1	1	21	15
16	1 1/4	2 1/16	1 1/4	1 1/4	22	16
17	1 5/16	2 3/16	1	1	24	17
18	1 3/8	2 3/16	1 1/4	1 1/4	25	18
19	1 3/8	2 5/16	1 1/4	1 1/4	28	19
20	1 7/16	2 5/16	1 1/4	1 1/4	28	20
21	1 1/2	2 5/16	1	1	27	21
22	1 1/2	2 5/16	1 1/4	1 1/4	28	22
23	1 5/8	2 9/16	1 1/4	1 1/4	30	23
24	1 3/4	3	1 1/2	1 1/2	31	24
25	1 3/4	3	1 3/4	1 3/4	32	25
26	1 15/16	3 1/4	1 3/4	1 3/4	34	26
27	2	3 1/4	1 1/2	1 1/2	33	27
28	2 3/16	3 1/2	1 3/4	1 3/4	36	28
29	2 1/4	3 1/2	1 1/2	1 1/2	35	29
30	2 3/8	3 3/4	1 3/4	1 3/4	38	30
31	2 1/2	3 3/4	1 1/2	1 1/2	37	31
32	2 3/4	4 1/4	1 3/4	1 3/4	39	32
33	2 3/4	4 1/4	2	2	40	33
34	2 15/16	4 1/2	2	2	42	34
35	3 1/8	4 3/4	2	2	43	35
36	3 1/4	4 3/4	2	2	43	36
37	3 1/4	5	2	2	45	37
38	3 3/8	5	2	2	45	38
39	3 1/2	5 1/4	2	2	46	39
40	3 3/4	5 1/4	2	2	46	40
41	3 3/4	6	2 1/2	2 1/2	49	41
42	4	6 1/2	2 1/2	2 1/2	51	42
43	4 1/2	7	2 1/2	2 1/2	52	43
44	4 1/2	7	3	3	53	44
45	4 3/4	7 1/4	3	3	54	45
46	5	7 1/2	2 1/2	2 1/2	55	46
47	5	7 1/2	3	3	56	47
48	5 1/2	8	2 1/2	2 1/2	57	48
49	5 1/2	8	3	3	58	49
50	6	9 1/8	3	3	59	50

APPROVED 19 DECEMBER 1965 REVISED (C) FOR CHANGES SEE SHEETS 1 AND 2

P. A. Other Cust	TITLE <b>BEARING, ROLLER, NEEDLE: ASSEMBLY (THICK OUTER RACE)</b>	<b>MILITARY STANDARD</b> <b>MS500072</b>
PROCUREMENT SPECIFICATION	SUPERSEDES	SHEET 2 OF 2