

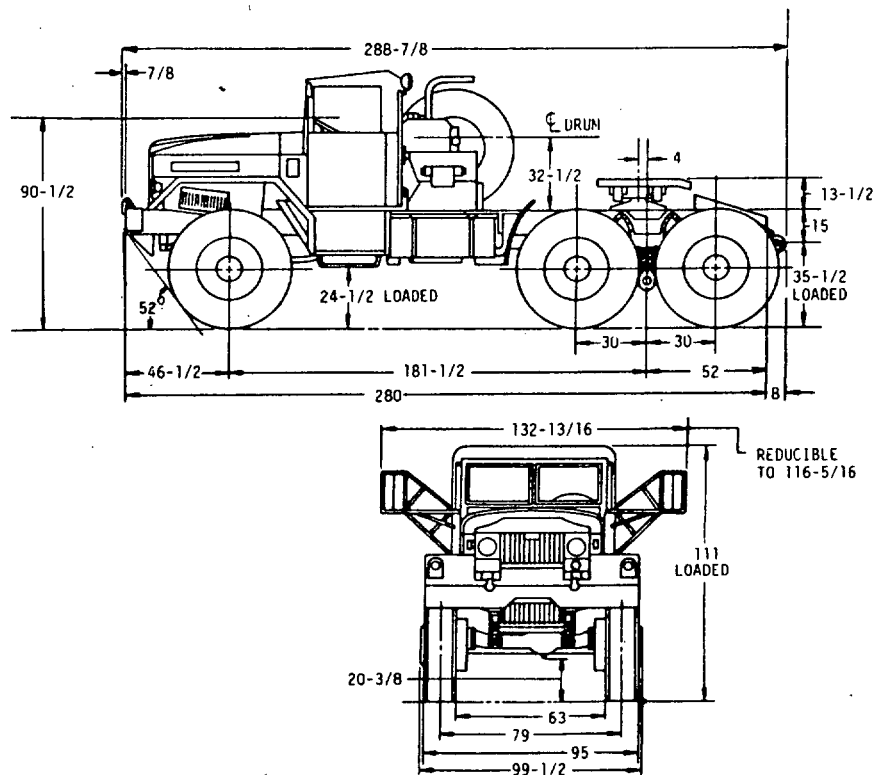
FED. SUP CLASS  
2320

USER ACTIVITIES:

REVIEWER ACTIVITIES:

This military standard is approved for use by the US Army Tank-Automotive Command, Department of the Army, and is available for use by all Departments and Agencies of the Department of Defense.

DISTRIBUTION STATEMENT A. Approved for public release; distribution is unlimited.



ⓑ ENTIRE STANDARD REVISED

MS PART NO.	ENGINEERING DRAWING NO.
MS 500070-1	8736634

P. A. ARMY-AT Other Cust	INTERNATIONAL INTEREST	TITLE <b>TRUCK TRACTOR: 10 TON, 6 X 6, 181.5 INCH WHEELBASE, M123A1C</b>	<b>MILITARY STANDARD MS500070(AT)</b>
PROCUREMENT SPECIFICATION MIL-T-62012	SUPERSEDES:	SHEET 1	OF 2

DD FORM 672-1 LIMITED COORDINATION

PREVIOUS EDITIONS OF THIS FORM ARE OBSOLETE

APPROVED 9 NOVEMBER 1966 REVISED ⓑ 13 MAR 85

USER ACTIVITIES:

REVIEWER ACTIVITIES

This military standard is approved for use by the US Army Tank-Automotive Command, Department of the Army, and is available for use by all Departments and Agencies of the Department of Defense.

DISTRIBUTION STATEMENT A. Approved for public release; distribution is unlimited.

FED. SUP CLASS  
2320

## VEHICLE CHARACTERISTICS

WEIGHTS	EMPTY	LOADED	WHEELS RING:	MS53044-9
LESS CREW:			SIZE 24 X 10 OFFSET 8-7/8	
PAYLOAD	-	30000	RING	MS53045-5
FRONT AXLE	12650	13754		
INTER AXLE	8790	23243	TIRES: TEN PLUS ONE SPARE	MS35388-27
REAR AXLE	8790	23243	SIZE 14.00 X 24; 20 PLY, TREAD, NDHS	
TOTAL-LBS.	30230	60230		
			TUBES:	MS35392-20
TOWED LOAD: MAXIMUM, INCL PAYLOAD			CAB: SOFT TOP	10864639-4
LOADED	80000 LBS		CAB ASSY COMPLETE	10946114
(REFERENCED WEIGHTS ARE FOR INFORMATION ONLY)			SPARE TIRE MOUNT	8760269
			HOOD, GRILL AND FENDER	10946159
			STEERING GEAR & LINKAGE	10946188
MINIMUM TURNING RADIUS: 18 FT.			BATTERY BOX-RUNNING BOARD	10864938-2
			BATTERY BOX, SECOND	10946225
FORDING DEPTH:	WITH KIT 78 IN.		RUNNING BOARD L.H.	11659837-1
	WITHOUT KIT 30 IN.		REAR FENDER	10864633
			STEP, FRONT	11641221
POWER PLANT:		10946157	AIR CLEANER	10946156
ENGINE DIESEL V8-300 COMPLETE		10946195	INSTRUMENT PANEL	10946177
ENGINE DIESEL V8-300 BASIC		10946107	TACHOMETER CABLE	10946136
DISPLACEMENT: 785 CUBIC IN. BORE 5-1/2			SPEEDOMETER CABLE	10864653
STROKE 4-1/8			ACCELERATOR	10946119
COMPRESSION RATIO 16.9 TO 1			PROPELLER SHAFT	10945917
GOVERNED SPEED 3000 RPM			HAND BRAKE	10864644
MAXIMUM GROSS HP 300 @ 3000 RPM				
MAXIMUM GROSS TORQUE			FIFTH WHEEL ASSY:	MS53034-1
580 FT. LBS. @ 2100 RPM			FIFTH WHEEL	8760287
			FOR 3-1/2 INCH KING PINS ONLY.	
COOLING SYSTEM:		10946133	FRONT BUMPER:	10864638-2
CAPACITY 49 QTS.				
RADIATOR AND SHROUD ASSY		10946106	WINCH:	10864662
			WINCH, CAPACITY 45000 LBS.	10864727
FUEL SYSTEM:		10946175	PINTLE:	8760245
			PINTLE HOOK	MS51117-1
EXHAUST SYSTEM:		10946072		
			AIR BRAKE SYSTEM:	10946193
CLUTCH ASSY:		10945906	GOVERNOR	MS53006-1
CLUTCH PEDAL		8760431	PEDAL AND BRACKET ASSY	10875600
PRESSURE PLATE		8332176	AIR RESERVOIR, TWO	7534286
DISC COMPLETE, TWO		8332177	VALVE, HAND CONTROL	8331393
TRANSMISSION:		8332883-1		
FORWARD SPEEDS, TEN REVERSE, TWO			ELECTRICAL WIRING:	10946113
RATIOS: HIGH 7.53 4.32 2.60 1.62 1.00			LIGHT MARKER, R & L, TWO	MS53047-1
LOW 18.83 10.80 6.50 4.05 2.50			HEADLIGHT, TWO	8741462
REVERSE RATIOS, HIGH 7.53 LOW 18.83			HEADLIGHT, BLACKOUT L.H.	MS51318-1
TRANSFER: INTEGRAL WITH TRANSMISSION			SLAVE RECEPTACLE	7731421
			MARKER LAMP, BLACKOUT, TWO	MS51303
FRONT SUSPENSION:		8760443-1	REAR LIGHTING	10945908
FRONT AXLE		7998622-1	POTENTIAL, 24 VOLT	
FRONT SPRINGS, TWO		8332831	WIRING DIAGRAM	10946158
SHOCK ABSORBER, R.H.		8332827	TAILLIGHT, TWO	MS51329-1
SHOCK ABSORBER, L.H.		8332828	LAMP ASSY BLACKOUT, STOP	MS51302-1
			GENERATOR, ALTERNATOR	10929868
REAR SUSPENSION: BOGIE		8760450-2	BATTERIES, 12 VOLT, 6TN, FOUR	MS35000-4
AXLE REAR, FRONT		10945921-3		
AXLE REAR, REAR		10945921-2	PERFORMANCE:	
SPACER-REAR SPRING U BOLT, TWO		8332843	FUEL TANK, CAPACITY	166 GALLONS
REAR SPRINGS, TWO		8332839	CRUISING RANGE, HIGHWAY	350 MILES
TORQUE ROD ASSY-FRONT		8329534	MAXIMUM SPEED, HIGHWAY	44 MPH
TORQUE ROD ASSY-REAR		7327455		
FRAME ASSY:		10946062	ADDITIONAL EQUIPMENT AVAILABLE:	
SIDE RAIL 10-5/8 X 3-1/4 X 5/16			ARCTIC HEATER KIT, COMPLETE	11600101
SECTION MODULUS 15.0 IN <sup>3</sup>			HEATER KIT, PERSONNEL TEMP.	11592317-2
REAR CROSS MEMBER		8760190	FORDING KIT	11600102
TIE DOWNS, TEN		7373215	WARNING LIGHT KIT	11649248
LOCATION-5 EACH SIDE				

## NOTES:

1. DIMENSIONS ARE IN INCHES AND ARE SHOWN FOR ENGINEERING REFERENCE ONLY.
2. REFERENCED DOCUMENTS SHALL BE OF THE ISSUE IN EFFECT ON DATE OF INVITATIONS.
3. THIS VEHICLE SHALL BE IN ACCORDANCE WITH REFERENCED ENGINEERING DRAWINGS, COPIES OF WHICH MAY BE OBTAINED FROM: US ARMY TANK-AUTOMOTIVE COMMAND, WARREN MICH, 48090.
4. SUBJECT OF NATO STANAG 2805-A (EDITION 3); DO NOT REVISE OR CHANGE.

(B) ENTIRE STANDARD REVISED

P. A. ARMY-AT	INTERNATIONAL INTEREST	TITLE	MS PART NO.	ENGINEERING DRAWING NO.
Other Cust		TRUCK TRACTOR: 10 TON, 6 X 6, 181.5 INCH WHEELBASE, M123A1C	MS 500070-1	8736634
PROCUREMENT SPECIFICATION MIL-T-62012			MILITARY STANDARD MS500070(AT)	
SUPERSEDES:			SHEET 2 OF 2	

DD FORM 672-1 LIMITED COORDINATION

PREVIOUS EDITIONS OF THIS FORM ARE OBSOLETE

APPROVED 9 NOVEMBER 1966 REVISED (B) 13 MAR 85