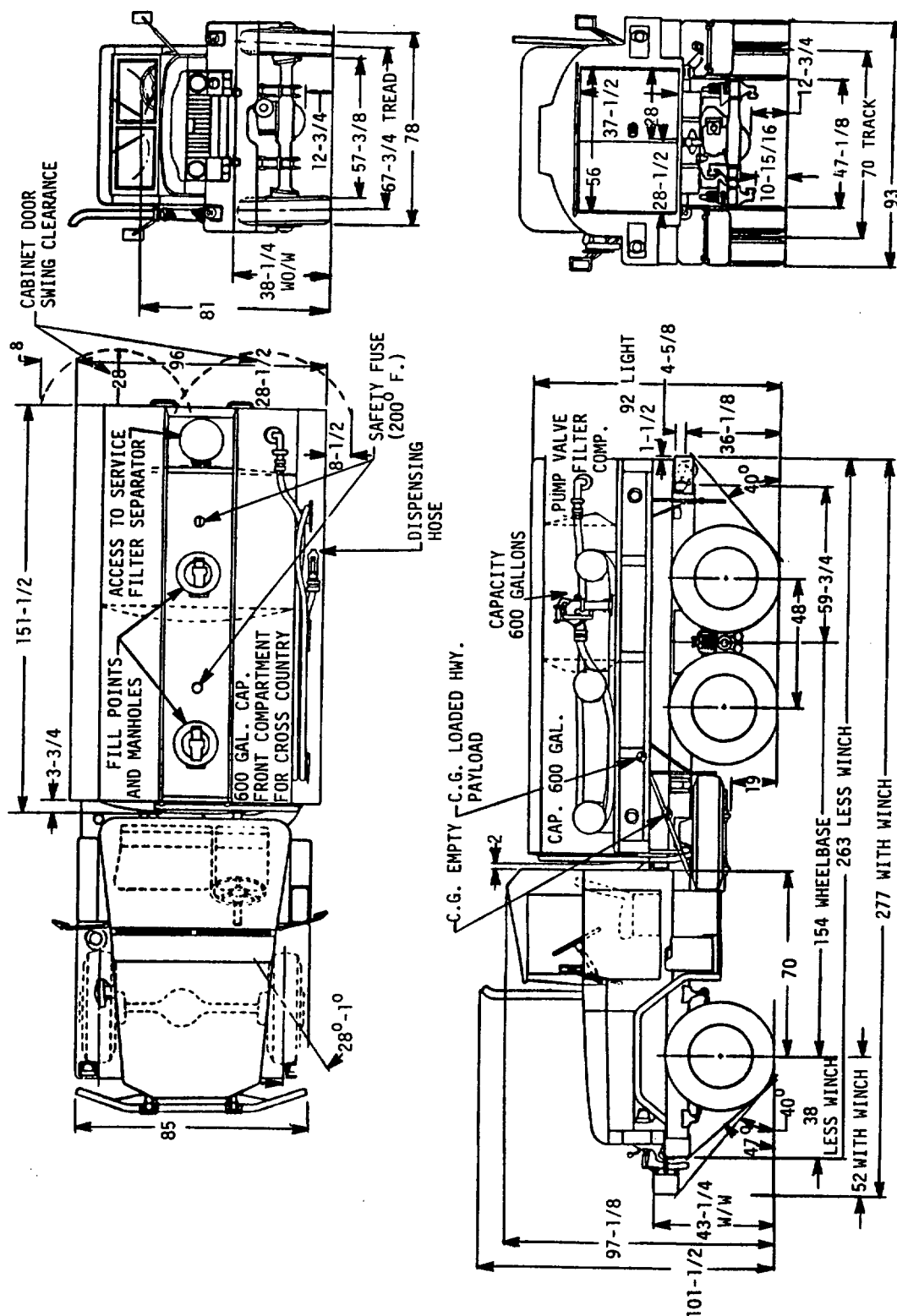


The requirements for acquiring the product(s) described herein shall consist of this specification sheet and the issue of the following specification listed in that issue of the DoDISS specified in the solicitation:

This specification is approved for use by all Departments and Agencies of the Department of Defense.



Ⓔ DENOTES CHANGE

	ENGINEERING	
MS PART NO.	DRAWING NO.	DESCRIPTION
MS500068-1	8736575	WITH WINCH
MS500068-2	8736574	LESS WINCH

**PREPARING ACTIVITY: ARMY-AT**

CUSTODIANS: ARMY- AT (E) NAVY- MC  
AIR FORCE- 99

REVIEW: AF-84  
USER:

**PROJECT NUMBER: 2320-0391**

# MILITARY SPECIFICATION SHEET

**TITLE:**  
TRUCK, TANK: FUEL SERVICING,  
2-1/2 TON, 6x6, 1200 GALLON,  
M49A2C

**SPECIFICATION SHEET NUMBER:**

MS500068E  
14 SEPTEMBER 1989

**SUPERSEDING:**  
MS500068D, 28 AUGUST 1986

AMSC-NA FSC- 2320

**DISTRIBUTION STATEMENT A.** Approved for public release; distribution is unlimited.

Page 1 of 2

## VEHICLE CHARACTERISTICS

Form Approved  
OMB No. 0704-0188

CHASSIS: M45A2

W/WINCH,  
WO/WINCHE 8736575  
8736574

## FRAME ASSEMBLY:

COMP. 11609279-1  
RIVETED 11609278

## TIE DOWNS: W/WINCH, 18,

11647735

LOCATION: 7 EACH SIDE, 2 FRONT, 2 REAR  
SHACKLE, TWO, 7539662CURB WEIGHT: TRUCK, TANK, FULLY EQUIPPED  
LESS PAYLOAD AND CREW.

	WO/W	W/W
FRONT AXLE	5,765 LBS	6,420 LBS
BOGIE	8,575	8,440
TOTAL	14,340 LBS	14,860 LBS

## BRAKES:

AIR	INST'N 11647737-2
HYDRAULIC	INST'N 10937705-1
HAND BRAKE	INST'N 11609817
MASTER CYLINDER AND CONTROLS	INST'N 10871533-1

E PAYLOAD: WO/W 1200 GAL W/W 1200 GAL  
LOADEDGROSS WEIGHT: FULLY EQUIPPED, LOADED  
LESS CREW. (ADD 400 LBS FOR 2 MAN CREW  
PLUS EQUIPMENT)

	WO/W	W/W
FRONT AXLE	6,980 LBS	7,635 LBS
REAR BOGIE	11,680	11,545
	18,660 LBS	19,180 LBS

WHEELS: TEN PLUS ONE SPARE, INCLUDING  
RING 7389620  
SIZE: 20 X 7-1/2, 6-1/4 OFFSET  
MS53045-3TIRES: TEN PLUS ONE SPARE,  
SIZE: 9.00 X 20, 8 PLY, NDCC  
STYLE A, MIL-T-12459

TUBES: ZZ-I-550

CAB ASSEMBLY: SOFT TOP 10896757

MIRROR ASSEMBLY: REAR VIEW 10937793

STEERING: INST'N 10897162

FUEL SYSTEM: INST'N 10897080

EXHAUST SYSTEM: INST'N 11677097

INSTRUMENT PANEL: INST'N 10937450

TACHOMETER: INST'N 10896303

SPEEDOMETER: INST'N 10937442

THROTTLE LINKAGE: INST'N 10896671-1

AIR CLEANER: INST'N 10896886-1

PROPELLER SHAFT: INST'N 10871516

WINCH: INST'N 10872197  
6100 LBS CAPACITY, 7538687

PINTLE: ASSEMBLY 11609483

CLUTCH PEDAL: INST'N 8757745

ELECTRICAL SYSTEM: INST'N 10896897  
POTENTIAL 24 VOLTS  
BATTERIES: 2, 12 VOLTS, 6TN, MS35000-4REFLECTORS: RED, 4, MS35387-1  
AMBER, 4, MS35387-2PERFORMANCE: W/O TOWED W/TOWED  
LOAD LOAD  
MAXIMUM SPEED 56 MPH 45 MPH  
MAXIMUM GRADE 60% 45 %  
CRUISING RANGE 300 MILES 275 MILES  
(W/DIESEL FUEL)

## ADDITIONAL EQUIPMENT AVAILABLE:

FORDING KIT 11609777  
CLOSURE ASSY., HARDTOP 7354276

PUMP DRIVE: INST'N 10872253

ENGINE: 11642105 W/ CLUTCH 11642117  
MODEL: LDT-465-1C, MULTIFUEL,  
SIX CYLINDERS IN LINEE TRANSMISSION ASSY: WO/W 10872096  
W/W 10872194  
TYPE: SYNCHROMESH  
FORWARD SPEEDS: 5, REVERSE: 1  
GEAR RATIO: 5.02, 2.78, 1.62, 1.00:1,  
0.79:1 REVERSE, 4.90:1TRANSFER TRANSMISSION:  
INST'N 10937637  
11609222GEAR RATIO: HIGH 1:1  
LOW 1.98:1FRONT SUSPENSION: INST'N 10872040  
FRONT AXLE, 7521734-1  
FRONT SPRINGS, 2, 11601335  
SHOCK ABSORBERS, 2, 7539007REAR SUSPENSION: INST'N 8757725  
REAR AXLE, 2, 7368511  
REAR SPRINGS, 2, 7521792  
TORQUE ROD ASSY., 6, 8757685

## NOTES:

1. DIMENSIONS ARE IN INCHES AND ARE SHOWN FOR ENGINEERING REFERENCE ONLY.
2. REFERENCED DOCUMENTS SHALL BE OF THE ISSUE IN EFFECT ON DATE OF INVITATIONS FOR BID
3. THIS VEHICLE SHALL BE IN ACCORDANCE WITH REFERENCED ENGINEERING DRAWINGS, COPIES OF WHICH MAY BE OBTAINED FROM: US ARMY TANK-AUTOMOTIVE COMMAND, WARREN, MICH. 48397-5000.
4. SUBJECT OF NATO STANAG 2805-A (EDITION 3). DO NOT REVISE OR CHANGE.

MS PART NO.	ENGINEERING DRAWING NO.	DESCRIPTION
MS500068-1	8736575	WITH WINCH
MS500068-2	8736574	LESS WINCH

PREPARING ACTIVITY: ARMY-AT

CUSTODIANS: ARMY- AT NAVY- MC  
AIR FORCE- 99REVIEW: AF-84  
USER:

PROJECT NUMBER: 2320-0391

## MILITARY SPECIFICATION SHEET

TITLE:  
TRUCK, TANK: FUEL SERVICING,  
2-1/2 TON, 6x6, 1200 GALLON,  
M49A2C

SPECIFICATION SHEET NUMBER:

MS500068E

14 SEPTEMBER 1989

## SUPERSEDING:

MS500068D, 28 AUGUST 1986

AMSC-NA

FSC- 2320

DISTRIBUTION STATEMENT A. Approved for public release; distribution is unlimited.

Page 2 of 2

The requirements for acquiring the product(s) described herein shall consist of this specification sheet and the issue of the following specification listed in that issue of the DoDSS specified in the solicitation:

This specification is approved for use by all Departments and Agencies of the Department of Defense.