

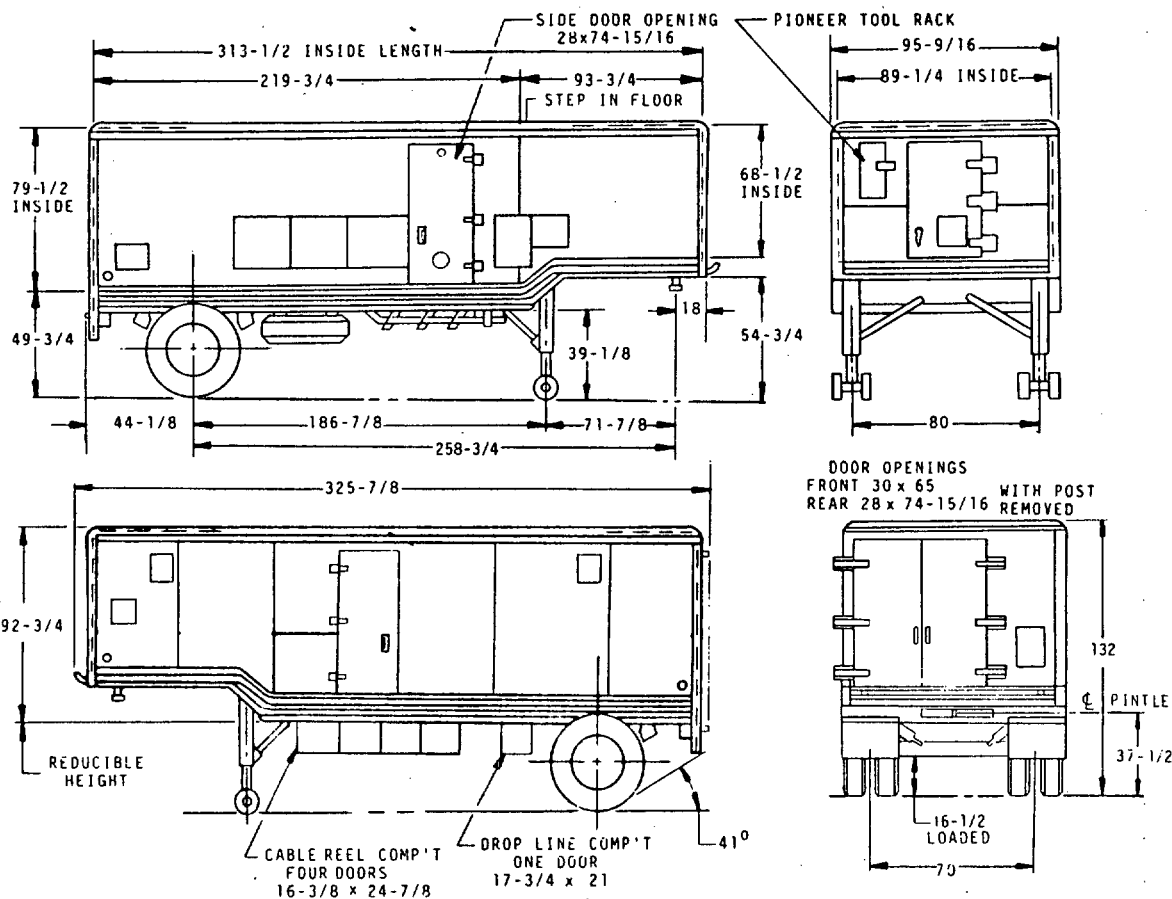
FED. SUP CLASS
2330

USER ACTIVITIES:

REVIEWER ACTIVITIES:

This military standard is approved for use by the US Army Tank-Automotive Command, Department of the Army, and is available for use by all Departments and Agencies of the Department of Defense.

DISTRIBUTION STATEMENT A. Approved for public release; distribution is unlimited.



© ENTIRE STANDARD REVISED

P. ARMY-AT Other Cust	INTERNATIONAL INTEREST	TITLE SEMITRAILER, VAN: ELECTRONIC, TACTICAL, 6 TON, 2 WHEEL, 26 FT, M348A2F	MS PART NO. MS500066-1	ENGINEERING DWG NO 8736271
PROCUREMENT SPECIFICATION MIL-S-46714			MILITARY STANDARD MS500066(AT)	
SUPERSEDES:			SHEET 1	OF 2

DD FORM 672-1 LIMITED COORDINATION

PREVIOUS EDITIONS OF THIS FORM ARE OBSOLETE

APPROVED 8 AUGUST 1966 REVISED © 13 MAR 85

USER ACTIVITIES:

REVIEWER ACTIVITIES:

This military standard is approved for use by the U.S. Army Tank-Automotive Command, Department of the Army, and is available for use by all Departments and Agencies of the Department of Defense.

DISTRIBUTION STATEMENT A: Approved for public release; distribution is unlimited.

FED. SUP CLASS
2330

VEHICLE CHARACTERISTICS

GENERAL USAGE: SEMITRAILER VAN IS USED TO TRANSPORT (AND HOUSE) ELECTRONIC EQUIPMENT OVER ALL TYPES OF ROADS AND LIMITED CROSS-COUNTRY TERRAIN.

PRIME MOVER: TRUCK, TRACTOR, 5-TON, 6 X 6, M52 SERIES OR M818 SERIES.

CURB WEIGHT: 9810 LBS.

PAYLOAD: 12,000 LBS.

WEIGHT DISTRIBUTION: SEMITRAILER NOT COUPLED TO TRUCK AND EMPTY:

LANDING GEAR 6500 LBS.
REAR BOGIE 3310 LBS.

WEIGHT DISTRIBUTION: SEMITRAILER COUPLED TO TRUCK AND EMPTY:

KINGPIN 4720 LBS.
REAR BOGIE 5090 LBS.

WEIGHT DISTRIBUTION: SEMITRAILER COUPLED TO TRUCK PAYLOAD EVENLY DISTRIBUTED.

LOADED
KINGPIN 8880 LBS.
REAR BOGIE 12930 LBS.

VAN BODY ASSEMBLY: ALUMINUM CONSTRUCTION, WATERTIGHT, AND AIR TIGHT. VAN BODY IS PROVIDED WITH 2 VENTS AND 3 INTERIOR DOME LIGHTS AND IS INSULATED WITH URETHANE FOAM INSULATION. COMPOSITE THERMAL CONDUCTIVITY OF VAN IS: .23 BTU/HR/SF /F. EXTERIOR SKIN IS ALUMINUM. THE INTERIOR LINER IS PAINTED PLYWOOD, EXTERIOR TYPE, 3/8 INCH THICK. THE FLOOR IS LINOLEUM OVER 3/4 INCH THICK PLYWOOD.

KINGPIN: 2 INCH DIAMETER.

LANDING GEAR: ADJUSTABLE, CRANK OPERATED.

VEHICLE ELECTRICAL SYSTEM: 24 VOLT SYSTEM; LIGHTING SYSTEM AND REFLECTORS COMPLY WITH DOT, FMVSS NO. 108.

PINTLE: ASSEMBLY, TOWING P/N M551335-1

NOTES:

1. DIMENSIONS ARE IN INCHES AND ARE SHOWN FOR ENGINEERING REFERENCE ONLY.
2. REFERENCED DOCUMENTS SHALL BE OF THE ISSUE IN EFFECT ON DATE OF INVITATIONS.
3. THIS VEHICLE SHALL BE IN ACCORDANCE WITH REFERENCED ENGINEERING DRAWINGS, COPIES OF WHICH MAY BE OBTAINED FROM: US ARMY TANK-AUTOMOTIVE COMMAND, WARREN MICH. 48090.
4. SUBJECT OF NATO STANAG 2805-A (EDITION 3) DO NOT REVISE OR CHANGE.

RAIL CAR TIEDOWNS: TOTAL QUANTITY 6; 4 DOLLY FRAME (TWO EACH SIDE), TWO ON UNDERCARRIAGE FRONT (ONE EACH SIDE.)

AIRCRAFT VAN BODY TIEDOWNS: TOTAL QUANTITY 12; 2 FRONT, 4 EACH SIDE, AND 2 REAR.

***LOADING DEPTH:** 5 FEET

MAXIMUM TOWING SPEEDS:

PAVED HIGHWAY 55 MPH
GRAVEL AND DIRT (SEC. RDS.) 30 MPH
BELGIAN BLOCK 20 MPH
LEVEL CROSS-COUNTRY 30 MPH
HILLY CROSS-COUNTRY 30 MPH

TIRE SIZE: 9:00 X 20, 8 PLY W/TUBE.

SUSPENSION: LEAF SPRINGS.

LEVELING JACKS: TWO, REAR, ONE EACH SIDE.

DOLLY: REMOVABLE W/SPARE TIRE ASSEMBLY, W/ONE AXLE ASSEMBLY.

AXLE RATING: CAPACITY 14000 LBS.

WHEELS: DUAL, SIZE 20 X 7-1/2 6-1/4 OFFSET.

BRAKE SIZE: 16-1/2 X 5-1/2.

BRAKES ACTUATION: AIR OVER HYDRAULIC SERVICE.

REAR DOOR POST: REMOVABLE.

DOOR LOCKS: TAMPER RESISTANT.

MISCELLANEOUS EQUIPMENT:

CHOCK BLOCKS 2
BOARDING LADDERS 1, 3 STEP
1, 4 STEP
MANUAL BOX 1
MUD PLATES, LANDING GEAR 2

RADIO FREQUENCY SHIELDING: LOW DECIBEL ATTENUATION BETWEEN 15KHZ -18GHZ

LIFTING EYES: TOTAL QUANTITY 4, TWO FRONT (ONE EACH SIDE), TWO REAR (ONE EACH SIDE).

© ENTIRE STANDARD REVISED

P. A. ARMY-AT		INTERNATIONAL INTEREST	TITLE	MS PART NO.	ENGINEERING DWG NO
Other Cust			SEMITRAILER, VAN: ELECTRONIC, TACTICAL, 6 TON, 2 WHEEL, 26 FT, M348A2F	MS500066-1	8736271
PROCUREMENT SPECIFICATION MIL-S-46714			SUPERSEDES:	MILITARY STANDARD	
				MS500066(AT)	
				SHEET 2 OF 2	

DD FORM 672-1 LIMITED COORDINATION

PREVIOUS EDITIONS OF THIS FORM ARE OBSOLETE

APPROVED 8 AUGUST 1966 REVISED © 13 MAR 85