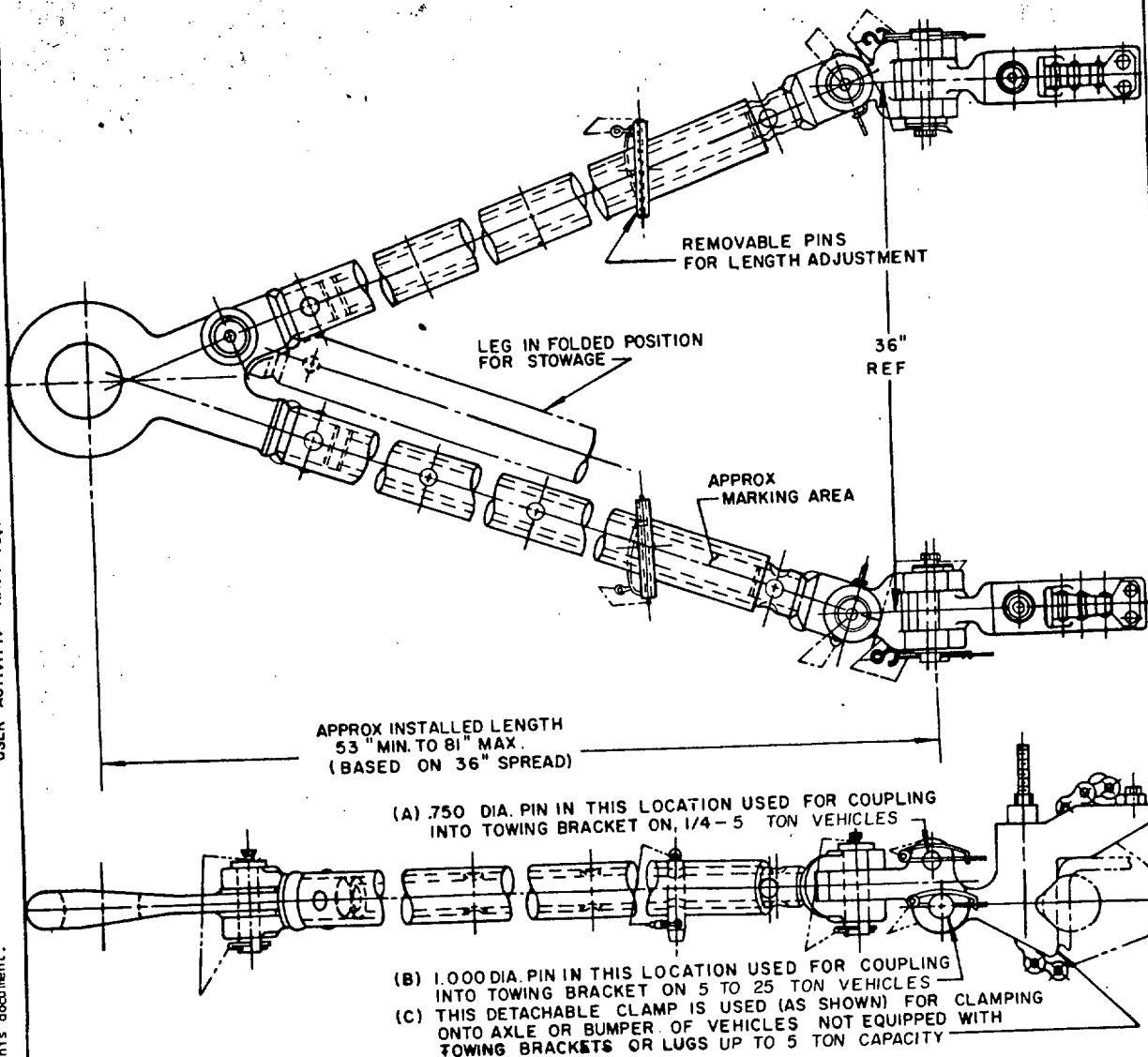


FED. SUP CLASS  
4910

APPROX INSTALLED LENGTH  
53" MIN. TO 81" MAX.  
(BASED ON 36" SPREAD)

(A) .750 DIA. PIN IN THIS LOCATION USED FOR COUPLING  
INTO TOWING BRACKET ON 1/4-5 TON VEHICLES

(B) 1.000 DIA. PIN IN THIS LOCATION USED FOR COUPLING  
INTO TOWING BRACKET ON 5 TO 25 TON VEHICLES

(C) THIS DETACHABLE CLAMP IS USED (AS SHOWN) FOR CLAMPING  
ONTO AXLE OR BUMPER OF VEHICLES NOT EQUIPPED WITH  
TOWING BRACKETS OR LUGS UP TO 5 TON CAPACITY

## NOTES:

1. DIMENSIONS SHOWN ARE IN INCHES AND ARE FOR ENGINEERING REFERENCE ONLY.
2. FOR DESIGN FEATURE PURPOSES, THIS STANDARD TAKES PRECEDENCE OVER PROCUREMENT DOCUMENTS REFERENCED HEREIN.
3. REFERENCED DOCUMENTS SHALL BE OF THE ISSUE IN EFFECT ON DATE OF INVITATION FOR BIDS.
4. MARKING SHALL CONSIST OF THE MS PART NUMBER AND MANUFACTURERS IDENTIFICATION IN ACCORDANCE WITH MIL-STD-130.

DETAILS OF THIS ASSEMBLY SHALL BE IN ACCORDANCE WITH REFERENCED ENGINEERING PARTS LIST WHICH MAY BE OBTAINED FROM HQS. U.S. ARMY WEAPONS COMMAND, ATTENTION: AMSWE-RDT, ROCK ISLAND ARSENAL, ROCK ISLAND, ILLINOIS. 61202

Ⓐ CANCELED with no superseding document.

P.A. AL  
Other Cust

TITLE

TOWBAR, MOTOR VEHICLE:  
UNIVERSAL V-TYPE

PROCUREMENT SPECIFICATION  
MIL-T-45043

SUPERSEDES:

MS. PART NO.	ENGINEERING PARTS LIST
MS. -1	7356056

MILITARY STANDARD  
**MS500047**

SHEET 1 OF 1

REVIEW ACTIVITY: ARMY-MO, WC, AF-84, 85  
USER ACTIVITY: NAVY-YD, MC

This military standard has been approved by the Department of Defense and is mandatory for use by all Departments and Agencies of the Department of Defense. Selection for all new engineering and design applications and for repetitive use shall be made from this document.