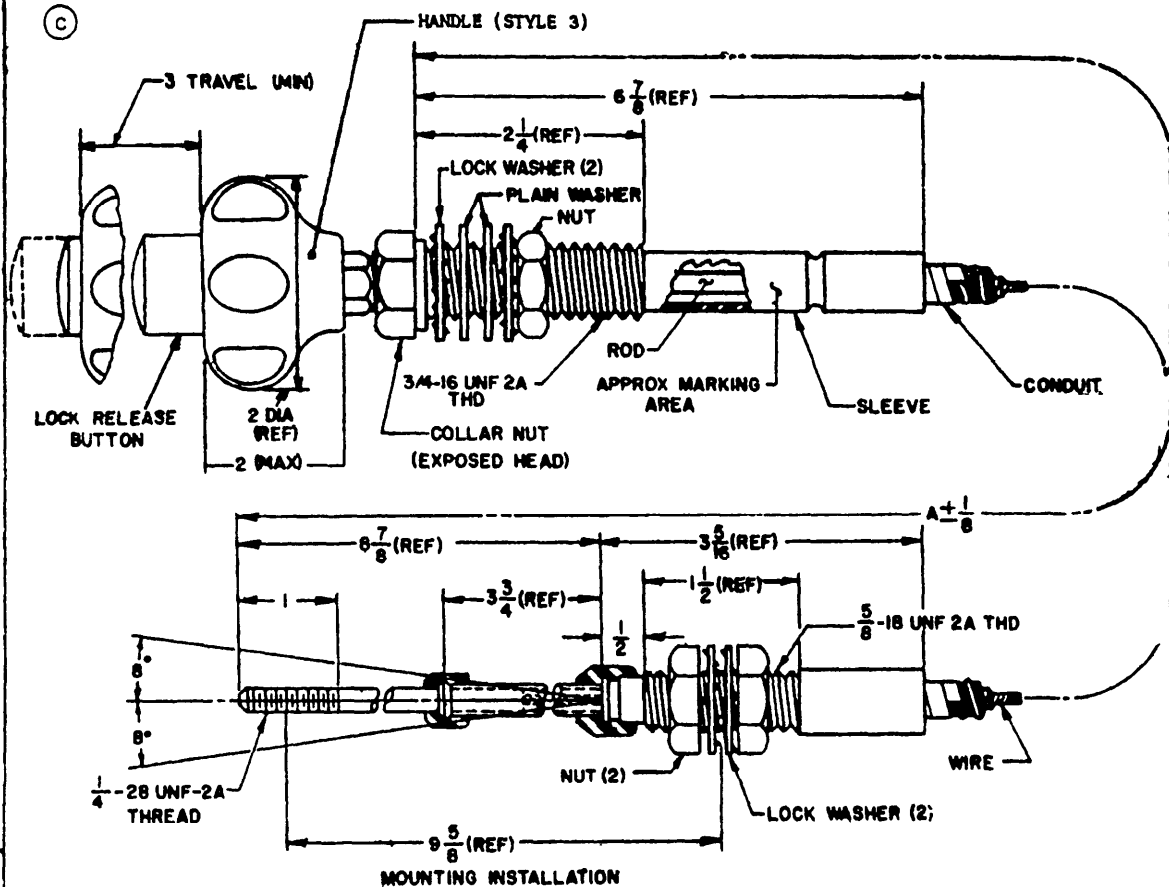


FED. SUP CLASS
2990

PULL LOAD	MS PART NO.	FORMER PART NO.	"A"
	MS500044-1	8337644	31-1/4
150 LBS	MS500044-2	8329536	44
	MS500044-3	7385028	51
150 LBS	MS500044-4	7992113	70-5/8
150 LBS	MS500044-5	7992935	74-1/2



NOTES:

1. TYPE III OF PROCUREMENT SPECIFICATION.
2. HANDLE AND COLLAR NUT SHALL BE PRIMED AND PAINTED OLIVE DRAB.
3. UNLINED CONDUIT SHALL BE PACKED WITH GREASE AT ASSEMBLY.
4. ALL DIMENSIONS ARE IN INCHES.
5. THIS STANDARD IS NOT INTENDED TO LIMIT CONSTRUCTION TO FEATURES OTHER THAN AS SHOWN HEREON BY DIMENSIONS AND NOTATIONS.
6. REFERENCED DOCUMENTS SHALL BE OF THE ISSUE IN EFFECT ON DATE OF INVITATIONS FOR BID.

P.A. ARMY-AT Other Cust A.F. - 99	TITLE CONTROL ASSEMBLY. PUSH-PULL: THROTTLE, ENGINE, VERNIER ADJUSTMENT TYPE	MILITARY STANDARD MS500044
PROCUREMENT SPECIFICATION MIL-C-62191	SUPERSEDES:	SHEET 1 OF

DD FORM 672-1 (COORDINATED)

PREVIOUS EDITIONS OF THIS FORM ARE OBSOLETE.

2990-0084

This military standard is approved for use by all Departments and Agencies of the Department of Defense. Selection for all new engineering and design applications and for repetitive use shall be made from this document.

REVIEW ACTIVITY: DSC-CS
USER ACTIVITIES: NAVY-MC, YD:

APPROVED 12 APRIL 1966 REVISED (A) 16 JULY 1969 (B) 29 APRIL 1975 (C) 25 SEPT 1977