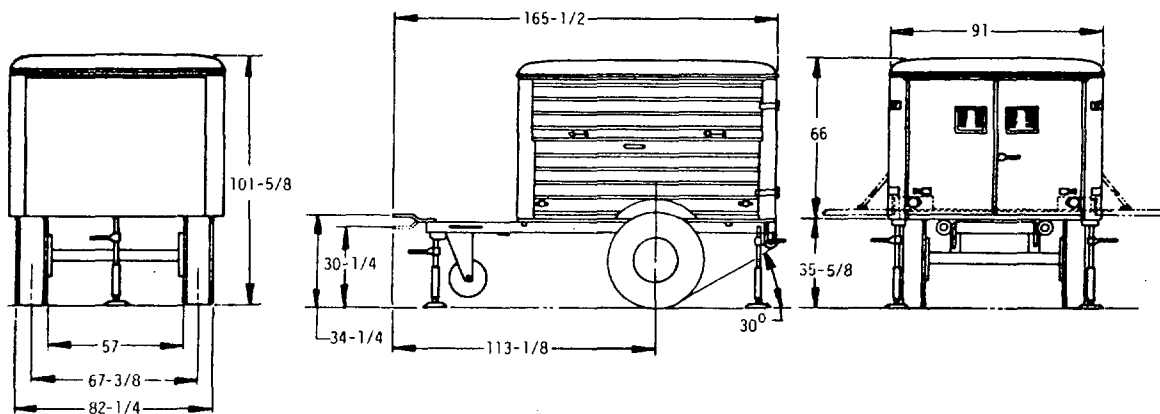


FED. SUP CLASS  
2330

USER ACTIVITIES:

REVIEWER ACTIVITIES:

This military standard is approved for use by the US Army Tank-Automotive Command, Department of the Army, and is available for use by all Departments and Agencies of the Department of Defense.



## VEHICLE CHARACTERISTICS

<u>PRIME MOVER:</u> TRUCK, CARGO, 2-1/2 TON, 6x6		<u>ELECTRICAL SYSTEM:</u>	8747900
<u>BASIC CHASSIS:</u> M103A3 MS53029-1		POTENTIAL-24 VOLTS	1614157
<u>CURB WEIGHT FULLY EQUIPPED:</u> 2960 LBS		COMPOSITE LIGHT-TAIL STOP, TURN AND MARKER	MS52125-2
<u>PAYLOAD:</u> 3000 LBS		<u>FRAME ASSEMBLY:</u>	7979967
<u>GROSS WEIGHT:</u> 5960 LBS		<u>AXLE ASSEMBLY:</u>	MS35865-A1
<u>WEIGHT DISTRIBUTION:</u>		<u>SPRINGS:</u> TWO MAIN TWO HELPER	7368628 7411042
	EMPTY		
LUNETTE EYE	252		
AXLE	2708		
LANDING GEAR	335		
AXLE	2625		
	LOADED		
	391		
	5569		
	520		
	5440 LBS		
(REFERENCED WEIGHTS ARE FOR INFORMATION ONLY)			
<u>BODY ASSEMBLY:</u>			
			10885350
<u>GENERAL:</u>			
THE M448 TRAILER IS DESIGNED TO PROVIDE A MOBILE TRAILER VAN SHOP WITH FOLDING SIDES. IT IS A COMPONENT OF VARIOUS AIR-CRAFT MAINTENANCE SHOPS. IT IS COMPOSED OF AN ALUMINUM BODY, MOUNTED ON AND IS REMOVABLE FROM, CHASSIS, TRAILER, MS53029-1. STABILIZING JACKS ARE PROVIDED FOR USE AT EACH REAR CORNER AND AT THE FRONT NEAR THE LUNETTE. A LANDING GEAR COMPOSED OF A CASTER TYPE LANDING WHEEL TO SUPPORT DRAWBAR AND PERMIT MOVEMENT TO TRAILER WHEN UNCOUPLED, IS ALSO PROVIDED.			
<u>FORDING DEPTH:</u>			
SUBMERISBLE TO TOP OF CHASSIS FOR 15 MINUTES.			
<u>NOTES:</u>			
1. DIMENSIONS ARE IN INCHES AND ARE SHOWN FOR ENGINEERING REFERENCE ONLY.			
2. REFERENCED DOCUMENTS SHALL BE OF THE ISSUE IN EFFECT ON DATE OF INVITATIONS FOR BID.			
3. THIS VEHICLE SHALL BE IN ACCORDANCE WITH REFERENCED ENGINEERING DRAWINGS, COPIES WHICH MAY BE OBTAINED FROM: US ARMY TANK-AUTOMOTIVE COMMAND, WARREN, MICH. 48090.			
<u>BRAKES:</u> PARKING			8742446
<u>ACTUATION:</u> AIR/HYDRAULIC			8724487
<u>MAXIMUM TOWING SPEEDS:</u>			
LOADED			15 MPH
HIGHWAY			50 MPH
<u>MISCELLANEOUS EQUIPMENT:</u>			
SHOCK ABSORBER KIT			8336778
<u>LUNETTE:</u> COUPLER			MS51339-2
<u>LANDING GEAR:</u> CASTER TYPE, FOLDING, ADJUSTABLE			12259830

(C) ENTIRE STANDARD REVISED

P. A. ARMY -AT Other Cust		INTERNATIONAL INTEREST	TITLE TRAILER, VAN: SHOP, FOLDING SIDE, 1-1/2 TON, 2WHEEL, M448	MS PART NO. MS 500036-1	ENGINEERING DWG NO 8736253
PROCUREMENT SPECIFICATION MIL-T-62020				MILITARY STANDARD MS500036(AT)	
SUPERSEDES:				SHEET	OF

DD FORM 672-1 LIMITED COORDINATION

PREVIOUS EDITIONS OF THIS FORM ARE OBSOLETE

APPROVED 23 FEB 66 REVISED (C) 15 JAN 85