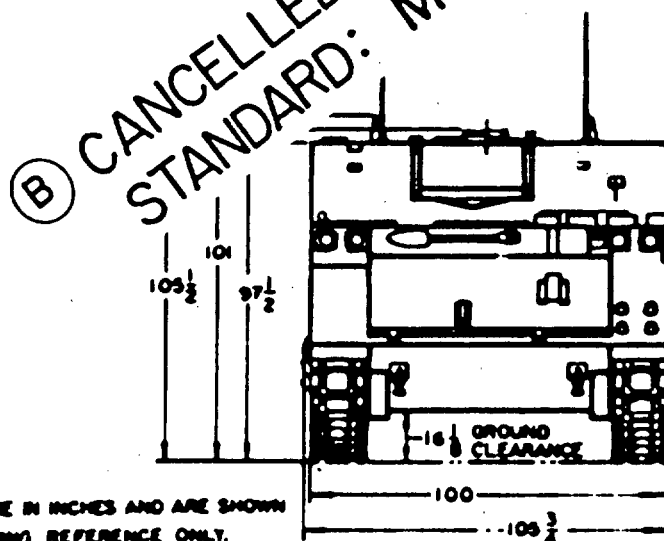
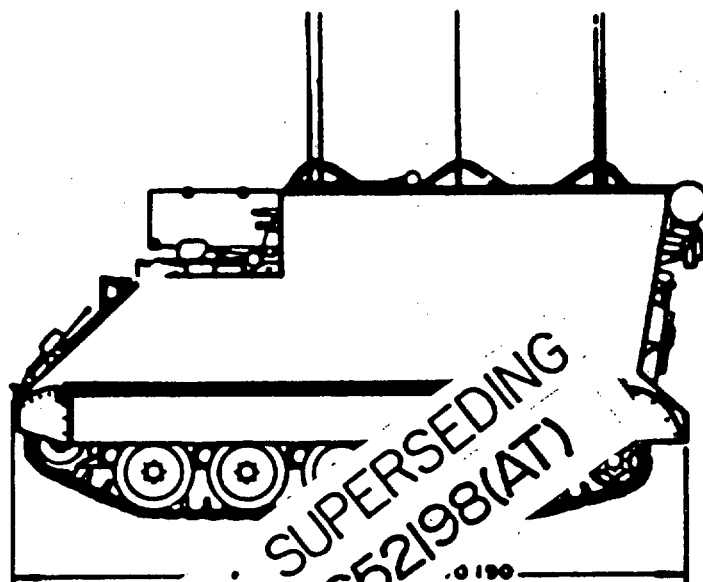
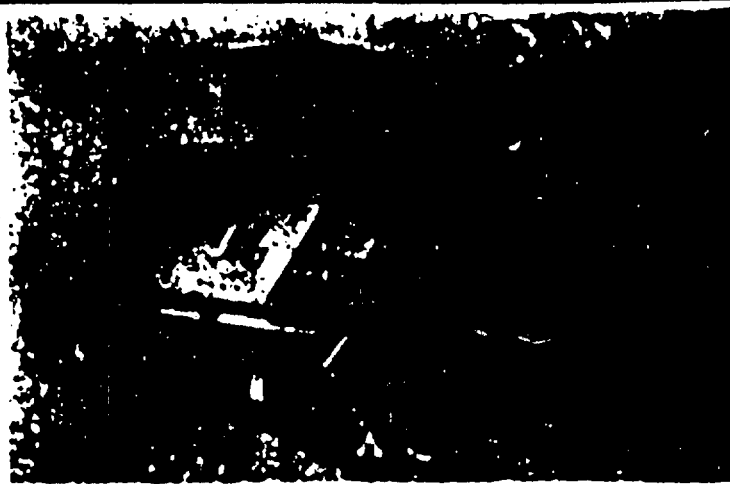


DISTRIBUTION STATEMENT A. Approved for public release; distribution is unlimited.

This military standard is approved for use by all Departments and Agencies of the Department of Defense. Solicitation for all new engineering and design applications and for repetitive use shall be made from this document when applicable.



DIMENSIONS ARE IN INCHES AND ARE SHOWN FOR ENGINEERING REFERENCE ONLY.

(B) DENOTES CHANGE

MS PART NO.	ARMY BRANCH NO.
MS 500023-1	8736577

P. A. AT Other Code	Intersect with table root	TITLE CARRIER, COMMAND POST, LIGHT TRACKED, MILITARY MODEL M577A1	MILITARY STANDARD
PROCUREMENT SPECIFICATION MIL-C-46783			MS 500023
SUPERSEDES			SHEET 1 OF 2

DD FORM 672-1 (Combined)

2350-0363

THIS DOCUMENT CONTAINS 2 PAGES

APPROVED 10 DEC 86 REVISED 30 JUNE 1978 27 OCT 86

VEHICLE CHARACTERISTICSWEIGHT:

WEIGHT: COMBAT LOADED, 25,383 LBS.
CREW: 5
WEIGHT, LESS CREW, STOWAGE, AND
FUEL: 22,759 LBS
CENTER OF GRAVITY: 45 IN. ABOVE GROUND
UNIT GROUND PRESSURE: 8.06 LBS/SQ. IN.

(REFERENCED WEIGHTS ARE FOR INFORMATION ONLY.)

VISION AND SIGHTING EQUIPMENT:

(4) PERISCOPE, VISION, DRIVERS:
TYPE M17 PART NO. 7043549
(1) PERISCOPE, INFRARED VISION,
DRIVERS: TYPE M19 PART NO. 7652971
(1) SPARE HEAD: PART NO. 7688707

ARMAMENT:

(6) RIFLE: 7.62 MM, M14, P/N 7267000

AMMUNITION:

720 ROUNDS, 7.62 MM, RIFLE

RUNNING GEAR:

SUSPENSION, TYPE IND. TORSION BAR.
(10) WHEELS, DUAL, 5 EA. SIDE
WHEEL SIZE, 24 IN.
TRACK, TYPE STEEL, SINGLE PIN WITH
DETACHABLE RUBBER PADS.
NO. OF SHOES/TRACK, 63L - 64R, PITCH
6 IN., WIDTH 15 IN.
(10) TIRES, DUAL TYPE, SOLID RUBBER,
SIZE: 24 X 2-1/8

ELECTRICAL SYSTEM:

24 VOLT
GENERATOR, MAIN: AMPER
GENERATOR, AUX: AMPER
BATTERY, TYPE 6TN,
IGNITION SYSTEM,

POWER PACKAGEENGINE:

2 CYCLE DIESEL-V6
DISPLACEMENT: 318 IN.
BORE: 3.875 IN., STROKE: 4.5 IN.
GOVERNED SPEED: 2800 RPM, FULL LOAD
COMPRESSION RATIO: 21.5:1
FUEL: DIESEL, W-F-800, CAPACITY 120 GALLONS
MIN. GROSS HORSEPOWER: 202 @2800 RPM
MIN. GROSS TORQUE: 425 LB. FT. @1500 RPM
COOLING SYSTEM, LIQUID, 9 GALLONS

POWER TRAIN: INST'L. DWG. NO. 10932830

COMMUNICATIONS:

RADIO SETS: SEE OVE LIST NO. 8736577
RADIO CONTROL BOXES - LOCATED AT
FRONT OF REAR COMPARTMENT FOR DRIVER
AND COMMANDER.
COMMUNICATION EQUIPMENT - LOCATED ON
A SHELF ON LEFT SIDE OF REAR COMPARTMENT.
NO. OF OUTLETS: 6
EXTERNAL INTERPHONE EXTENSION KIT -
MODEL - ARTILLERY COMMUNICATIONS
PART NO. 10932555

FIRE EXTINGUISHERS, CARBON DIOXIDE:

FIXED, 5 LB: INST'L. DWG. NO. 10917720
PORTABLE, 5 LB: PART NO. 7714780

PERFORMANCE:

GROSS HORSEPOWER TO WEIGHT RATIO:
16.7 HP/TON
MAX. TRACTIVE EFFORT: 19,800 LBS.
TE/M 81.6%
MAX. SPEED: 0 MPH.
MAX. GRAD:
MAX. T: IN.,
MAX. L: 24 IN.
C: 170 MILES
INITED

TRACK COMMAND POST CARRIER
IS A FULL TRACKED LIGHT WEIGHT
VEHICLE USED AS AN OPERATIONAL STAFF
OFFICE AND COMMAND POST. IT IS USED
AS HOUSING FOR OPERATIONAL STAFF OFFICE
AND COMMAND POST COMMUNICATIONS AND
REQUIRING HIGH MOBILITY. ALTHOUGH
INTENDED PRIMARILY FOR OPERATION OVER
CROSS COUNTRY TERRAIN, THE VEHICLE IS
AMPHIBIOUS AND CAN CROSS LAKES AND
STREAMS. THE VEHICLE ACCOMMODATES
A DRIVER AND FOUR-MAN OPERATIONAL
TEAM TO PERFORM FIELD OPERATIONS.

(FOR DESIGN FEATURE PURPOSES, THIS
STANDARD TAKES PRECEDENCE OVER
PROCUREMENT DOCUMENTS REFERENCED
HEREIN.)

(REFERENCED DOCUMENTS SHALL BE OF
THE ISSUE IN EFFECT ON DATE OF
INVITATION FOR BIDS OR REQUEST FOR
PROPOSAL, EXCEPT THAT REFERENCED
ADOPTED DOCUMENTS SHALL GIVE THE
DATE OF THE ISSUE ADOPTED.)

THIS VEHICLE SHALL BE IN ACCORDANCE
WITH DRAWINGS IN REFERENCED ENGINEERING
PARTS LIST, COPIES OF WHICH MAY BE
OBTAINED FROM:

A US ARMY TANK-AUTOMOTIVE MATERIEL
READINESS COMMAND
ATTN: DRSTA-GSS
WARREN, MICHIGAN 48090.

PROVISIONS OF THIS STANDARD ARE THE SUBJECT OF INTERNATIONAL STANDARDIZATION
AGREEMENT ABCA-ARMY QSTAG-STD-151. WHEN REVISION OR CANCELLATION OF THIS
STANDARD IS PROPOSED, THE DEPARTMENTAL CUSTODIAN WILL INFORM THEIR RESPECTIVE
DEPARTMENTAL STANDARDIZATION OFFICE SO THAT APPROPRIATE ACTION MAY BE TAKEN
RESPECTING THE INTERNATIONAL AGREEMENT CONCERNED.

APPROVED 10 DEC 65 REVISED A FOR CHANGES SEE SHEETS 1 & 2 B FOR CHANGES SEE SHEETS 1 & 2

P.A. Other Cost	International Interest	TITLE CARRIER, COMMAND POST, LIGHT TRACKED, MILITARY MODEL M577A1	MILITARY STANDARD MS 500023
PROCUREMENT SPECIFICATION	SUPERSEDES	SHEET 2 OF 2	