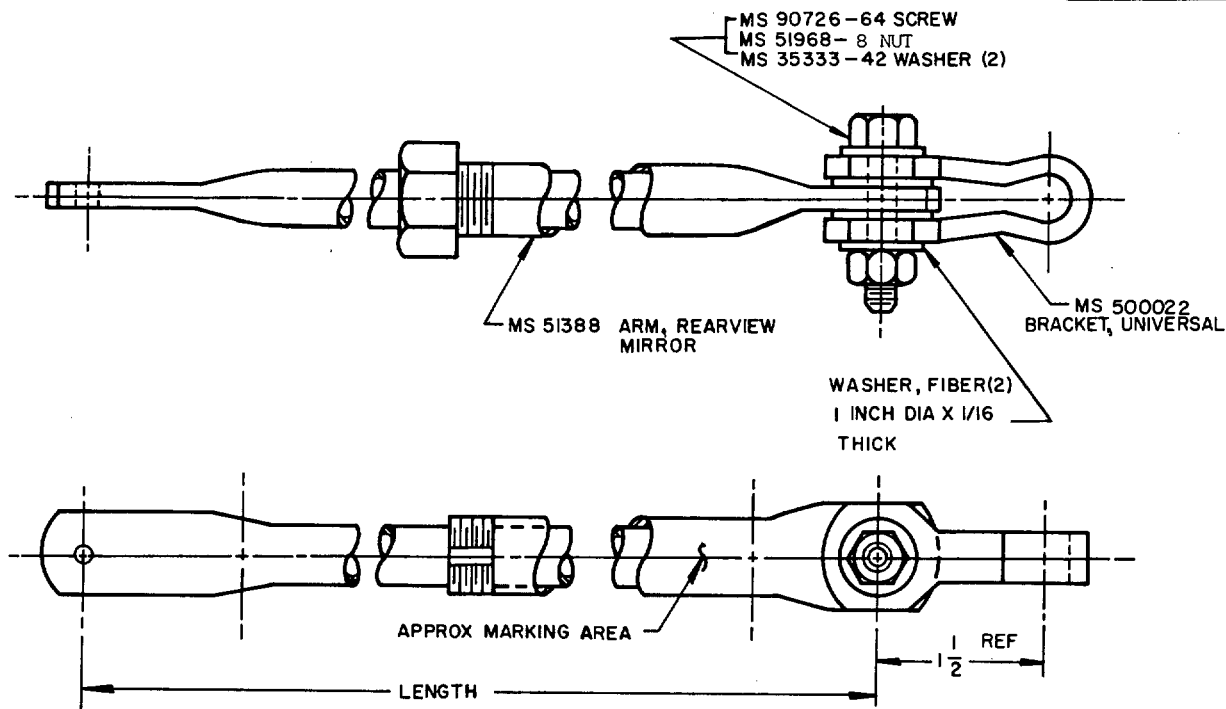


FED. SUP CLASS  
2540

| MS PART NO | FORMER PART NUMBER | LENGTH CLOSED | LENGTH EXTENDED |
|------------|--------------------|---------------|-----------------|
| MS500021-1 | 547250             | 8             | 11              |
| MS500021-2 | 583264             | 15            | 25              |

## NOTES:

1. MARKING SHALL CONSIST OF MS PART NUMBER AND MANUFACTURERS IDENTIFICATION IN ACCORDANCE WITH MIL-STD-130.
2. UNLESS OTHERWISE SPECIFIED, DIMENSIONS ARE IN INCHES, TOLERANCES ARE  $\pm 1/64$  ON FRACTIONS, .005 ON DECIMALS, AND  $1^\circ$  ON ANGULAR DIMENSIONS.
3. FOR DESIGN FEATURE PURPOSES, THIS STANDARD TAKES PRECEDENCE OVER PROCUREMENT DOCUMENTS REFERENCED HEREIN.
4. THIS STANDARD IS NOT INTENDED TO LIMIT CONSTRUCTION TO FEATURES OTHER THAN AS SHOWN HEREON BY DIMENSIONS, NOTATIONS, OR REFERENCED DOCUMENTS.
5. REFERENCE DOCUMENTS SHALL BE OF THE ISSUE IN EFFECT ON DATE OF INVITATIONS FOR BIDS, OR REQUEST FOR PROPOSAL.

**(B) CANCELLED AFTER 21 OCTOBER 1982.  
NO SUPERSEDING STANDARD.**

APPROVED 20 NOVEMBER 1965 REVISED (A) 31 AUGUST 1976 (B) 21 OCT 82

|   |  |                                    |
|---|--|------------------------------------|
| P.A. AT<br>Other Cust<br>NAVY—MC<br>AF—84 | TITLE<br><br>ARM ASSEMBLY, REARVIEW MIRROR | MILITARY STANDARD<br><br>MS 500021 |
| PROCUREMENT SPECIFICATION<br>NONE         | SUPERSEDES:                                | SHEET 1 OF 1                       |