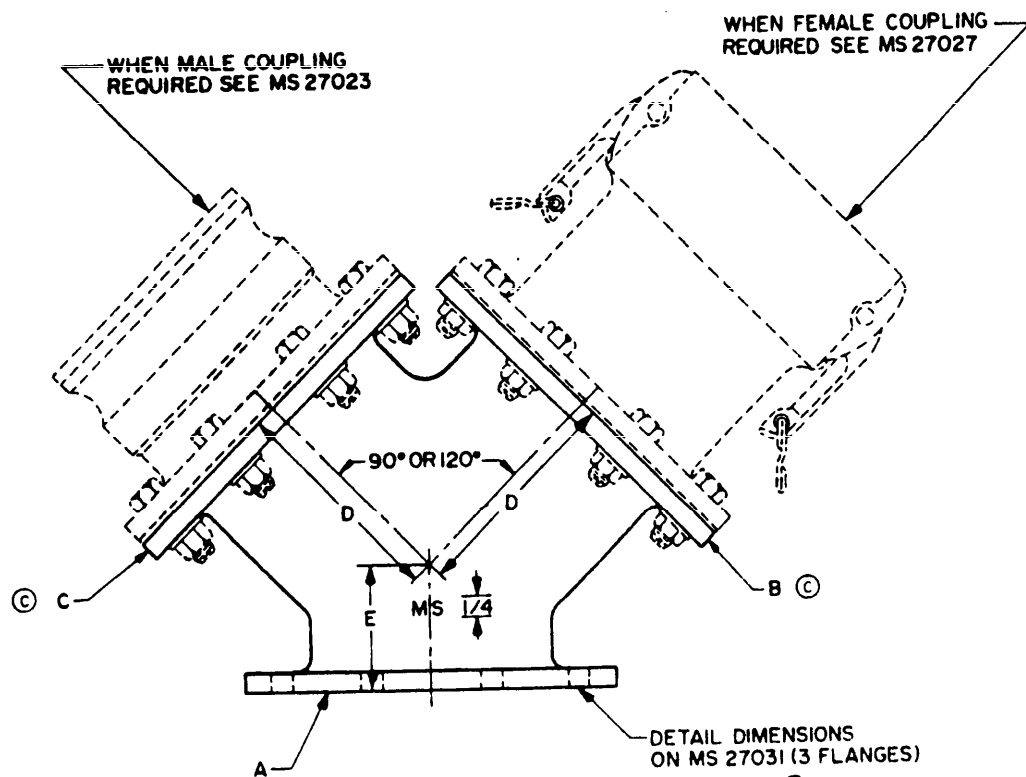


FED. SUP CLASS
4730DETAIL DIMENSIONS
ON MS 27031 (3 FLANGES)

| DASH NUMBER | CLASS NUMBER | | NOMINAL END SIZE | | | DIMENSIONS | |
|----------------|--------------|---------|------------------|---|---|-------------|---------|
| | CLASS 1 | CLASS 2 | A | B | C | E | D |
| -5 | X | | 6 | 6 | 6 | 3-1/2-5 | 6-1/8-9 |
| -6 | | X | | | | | |
| -1 | X | | 4 | 4 | 4 | 2-1/4-3-1/2 | 4-1/4-6 |
| -2 | | X | | | | | |
| -3 | X | | 3 | 3 | 3 | 2-1/8-3 | 4-5 |
| -4 | | X | | | | | |
| -7 | X | | 2 | 2 | 2 | 2-3 | 3-4 |
| -8 | | X | | | | | |

NOTES:

1. MATERIAL
 - a. BODY
 - CLASS 1 ALUMINUM - QQ-A-601, alloys 356.0-T6, 712.0-T5 or 713.0-T5
 - CLASS 2 BRASS - QQ-C-390, ALLOY 836, 844 OR 922; OR BRASS, QQ-B-626, COPPER ALLOY 377
2. FINISH
 - a. BODY
 - CLASS 1 ALUMINUM - MIL-A-8625, ANODIC COATING TYPE II, CLASS 1.
 - CLASS 2 BRONZE OR BRASS - BODY AND CAM ARMS, PLAIN.
3. BURRS AND ALL FOREIGN MATERIAL SHALL BE REMOVED.
4. HYDROSTATIC TEST PRESSURE - 2, 3, AND 4 INCH, 300 P.S.I.; 6 INCH, 150 P.S.I.
5. WORKING PRESSURE - 2, 3, AND 4 INCH, 150 P.S.I.; 6 INCH, 75 P.S.I.
6. DIMENSIONS IN INCHES, NOMINAL UNLESS OTHERWISE SPECIFIED.
7. PART NUMBER - THE MS PART NUMBER CONSISTS OF THE MS SHEET NUMBER PLUS THE DASH NUMBER.
EXAMPLE: MS39336-1.
8. THE STANDARD Y-CONNECTION CAN BE USED IN COMBINATION WITH STANDARD COUPLINGS, ADAPTERS, AND REDUCERS AS REQUIRED TO PROVIDE REQUIRED ITEMS.
9. REFERENCED DOCUMENTS SHALL BE OF THE ISSUE IN EFFECT ON DATE OF INVITATIONS FOR BID.
10. FOR DESIGN FEATURE PURPOSES, THIS STANDARD TAKES PRECEDENCE OVER PROCUREMENT DOCUMENTS REFERENCED HEREIN.

C DENOTED CHANGES

This military standard is approved for use by all Departments and Agencies of the Department of Defense. Selection for all new engineering and design applications and for repetitive use shall be made from this document when applicable.

REVIEW ACTIVITIES: USER ACTIVITIES:
ARMY - AV, GL, ARMY - AT
AIR FORCE - 82, NAVY - MC
DLA - CS

| | | | |
|--|--|---|---|
| P. A. ARMY-ME Other Cust NAVY-YD A.F.-99 | INTERNATIONAL INTEREST STANAG NO. 2761 QSTAG 240 | TITLE Y CONNECTION, QUICK DISCONNECT, CAM- LOCKING TYPE, FLANGE, TYPE XX. | MILITARY STANDARD MS39336 |
| PROCUREMENT SPECIFICATION MIL-C-27487 | | SUPERSEDES: | SHEET 1 OF 2 |

DD FORM 672-1 (COORDINATED)

4730-0465

APPROVED 10 DECEMBER 1970 REVISED A 30 SEPTEMBER 1975 B 16 JULY 1980 C 21 February 1984

FED. SUP CLASS
4730

NOTE:

CERTAIN PROVISIONS (DIMENSIONS) OF THIS DOCUMENT ARE THE SUBJECT OF INTERNATIONAL STANDARDIZATION AGREEMENT (STANAG NO. 2761 AND QSTAG 240). WHEN CHANGE NOTICE, REVISION, OR CANCELLATION OF THIS DOCUMENT IS PROPOSED WHICH WILL AFFECT OR VIOLATE THE INTERNATIONAL AGREEMENT CONCERNED, THE PREPARING ACTIVITY SHALL TAKE APPROPRIATE RECONCILIATION ACTION THROUGH INTERNATIONAL STANDARDIZATION CHANNELS, INCLUDING DEPARTMENTAL STANDARDIZATION OFFICES, IF REQUIRED.

APPROVED 10 DECEMBER 1970 REVISED (C) FOR CHANGES SEE SHEET 1

| | | | |
|--|--|---|---|
| P. A. ARMY-ME Other Cust. NAVY-YD A. F.-99 | INTERNATIONAL INTEREST STANAG NO. 2761 QSTAG 240 | TITLE Y CONNECTION, QUICK DISCONNECT, CAM- LOCKING TYPE, FLANGE, TYPE XX . | MILITARY STANDARD MS39336 |
| PROCUREMENT SPECIFICATION MIL-C-27487 | | SUPERSEDES: | SHEET 2 OF 2 |