

MS39212G  
29 March 2005  
SUPERSEDING  
MS39212F  
1 February 2002

DETAIL SPECIFICATION SHEET

SLEEVES, COMPRESSION, TUBE – HOSE FITTING-  
SAFETY SLEEVE TYPE

This specification is approved for use by all Departments and  
Agencies of the Department of Defense.

The requirements for acquiring the product described herein shall consist of this specification sheet.

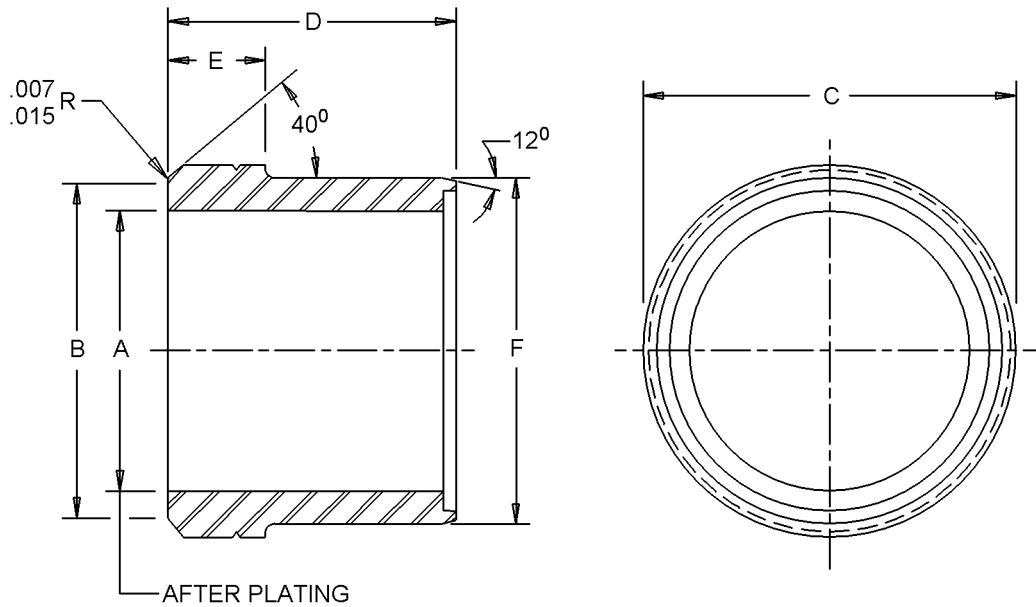


FIGURE 1. Sleeves, compression, tube – hose fitting – safety sleeve type.

## MS39212G

| Dash Number | Tube O.D. | A (mm)                       | B (mm)                       | C (mm)                       | D (mm)                     | E (mm)                   | F (mm)                       |
|-------------|-----------|------------------------------|------------------------------|------------------------------|----------------------------|--------------------------|------------------------------|
| 1           | 1/8       | .129(3.28)<br>.131(3.33)     | .160(4.06)<br>.150(3.81)     | .213(5.41)<br>.203(5.16)     | .281(7.14)<br>.275(6.99)   | .084(2.13)<br>.078(1.98) | .178(4.52)<br>.175(4.45)     |
| 2           | 3/16      | .190(4.83)<br>.193(4.90)     | .250(6.35)<br>.230(5.84)     | .322(8.18)<br>.312(7.92)     | .281(7.14)<br>.275(6.99)   | .084(2.13)<br>.078(1.98) | .256(6.50)<br>.252(6.40)     |
| 3           | 1/4       | .255(6.48)<br>.258(6.55)     | .316(8.03)<br>.296(7.52)     | .380(9.65)<br>.370(9.40)     | .339(8.61)<br>.333(8.46)   | .102(2.59)<br>.096(2.44) | .338(8.59)<br>.334(8.48)     |
| 4           | 5/16      | .318(8.08)<br>.321(8.15)     | .379(9.63)<br>.359(9.12)     | .448(11.38)<br>.438(11.13)   | .339(8.61)<br>.333(8.46)   | .102(2.59)<br>.096(2.44) | .400(10.16)<br>.396(10.06)   |
| 5           | 3/8       | .380(9.65)<br>.383(9.73)     | .441(11.20)<br>.421(10.69)   | .505(12.83)<br>.495(12.57)   | .378(9.60)<br>.372(9.45)   | .122(3.10)<br>.116(2.95) | .461(11.71)<br>.457(11.61)   |
| 6           | 1/2       | .506(12.85)<br>.509(12.93)   | .567(14.40)<br>.547(13.89)   | .635(16.13)<br>.625(15.88)   | .378(9.60)<br>.372(9.45)   | .122(3.10)<br>.116(2.95) | .589(14.96)<br>.585(14.86)   |
| 7           | 5/8       | .633(16.08)<br>.636(16.15)   | .694(17.63)<br>.674(17.12)   | .760(19.30)<br>.750(19.05)   | .418(10.62)<br>.412(10.46) | .122(3.10)<br>.116(2.95) | .715(18.16)<br>.711(18.06)   |
| 8           | 3/4       | .758(19.25)<br>.761(19.33)   | .819(20.80)<br>.799(20.29)   | .885(22.48)<br>.875(22.23)   | .418(10.62)<br>.412(10.46) | .122(3.10)<br>.116(2.95) | .840(21.34)<br>.836(21.23)   |
| 9           | 7/8       | .883(22.43)<br>.886(22.50)   | .944(23.98)<br>.924(23.47)   | 1.010(25.65)<br>1.000(25.40) | .418(10.62)<br>.412(10.46) | .122(3.10)<br>.116(2.95) | .965(24.51)<br>.961(24.41)   |
| 10          | 1         | 1.008(25.60)<br>1.011(25.68) | 1.069(27.15)<br>1.049(26.64) | 1.135(28.83)<br>1.125(28.58) | .418(10.62)<br>.412(10.46) | .122(3.10)<br>.116(2.95) | 1.090(27.69)<br>1.086(27.58) |
| 11          | 1-1/4     | 1.261(32.03)<br>1.264(32.11) | 1.322(33.58)<br>1.302(33.07) | 1.416(35.97)<br>1.406(35.71) | .418(10.62)<br>.412(10.46) | .122(3.10)<br>.116(2.95) | 1.344(34.14)<br>1.340(34.04) |
| 12          | 1-1/2     | 1.511(38.38)<br>1.514(38.46) | 1.572(39.93)<br>1.552(39.42) | 1.666(42.32)<br>1.656(42.06) | .418(10.62)<br>.412(10.46) | .122(3.10)<br>.116(2.95) | 1.593(40.46)<br>1.589(40.36) |

## NOTES:

1. Dimensions are in inches, unless otherwise specified.
2. Metric equivalents are given for general information only.
3. Unless otherwise specified, tolerance for 3 place decimals is  $\pm .005$ , tolerance for fractions is  $\pm 1/64$ , tolerance for degrees is  $\pm 2^\circ$ .
4. Threads shall be in accordance with FED-STD-H28A.
5. This illustration is for identification and is not intended to restrict designs or shapes not dimensioned.

FIGURE 1. Sleeves, compression, tube – hose fitting – safety sleeve type – Continued.

## MS39212G

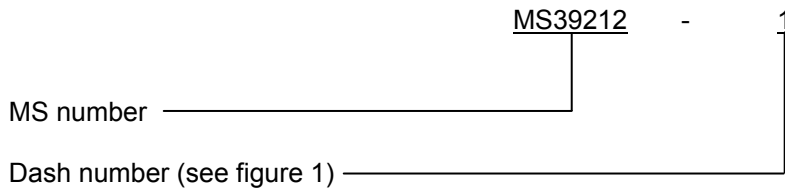
## REQUIREMENTS:

Dimensions and configuration: See figure 1.

Material: Carbon steel AISI-C1112, AISI-C1113, AISI-C1117, AISI-C1118 or AISI-C1137 in accordance with SAE-AMS-STD-66.

Finish: Cadmium plated in accordance with SAE-AMS- QQ-P-416, type II, class 3.

Part or Identifying Number (PIN) example: (PIN covers the complete item with nuts and sleeves.)



Reference documents. This document references the following:

|            |                  |
|------------|------------------|
| AISI-C1112 | FED-STD-H28A     |
| AISI-C1113 | SAE-AMS-STD-66   |
| AISI-C1117 | SAE-AMS-QQ-P-416 |
| AISI-C1118 |                  |
| AISI-C1137 |                  |

Changes from previous issue. Marginal notations are not used in this revision to identify changes with respect to the previous issue due to the extent of the changes.

## CONCLUDING MATERIAL

Custodians:  
Army - AT  
DLA - CC

Preparing activity:  
DLA - CC

(Project 4730-2621-000)

NOTE: The activities listed above were interested in this document as of the date of this document. Since organizations and responsibilities can change, you should verify the currency of the information above using the ASSIST Online database at <http://assist.daps.dla.mil>.