

MS39210H
29 March 2005
SUPERSEDING
MS39210G
1 February 2002

DETAIL SPECIFICATION SHEET

NUTS, TUBE COUPLING – SAFETY SLEEVE
COMPRESSION TYPE

This specification is approved for use by all Departments and
Agencies of the Department of Defense.

The requirements for acquiring the product described herein shall consist of this specification sheet.

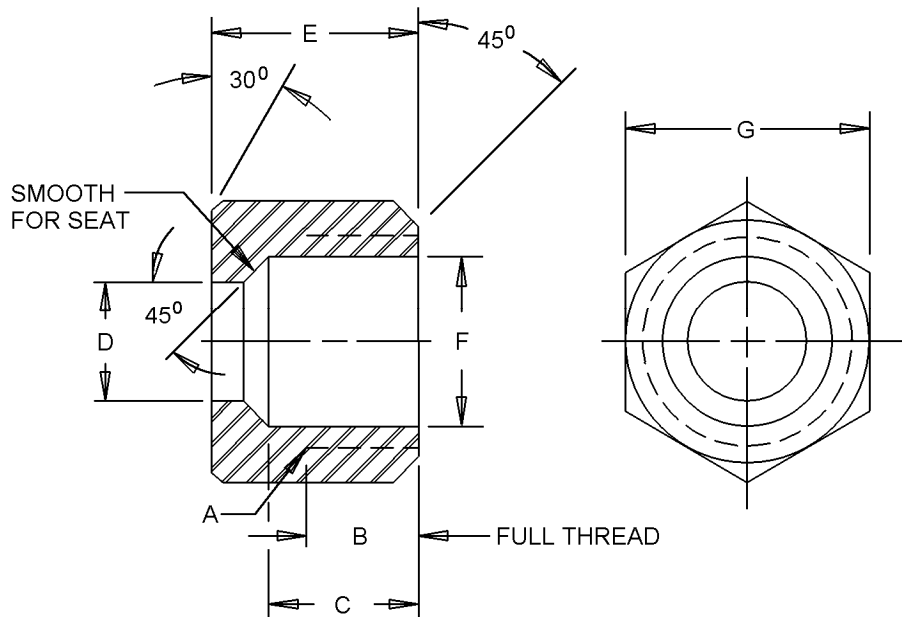


FIGURE 1. Nuts, tube coupling – safety sleeve compression type.

MS39210G

Dash Number	Tube O.D.	A Pipe Thread NPTF	B Thread Length (mm)	C (mm)	D (mm)	E (mm)	F (mm)	G (mm)
1	1/8	5/16 24UNF-2B	.219 (5.56)	.297 (7.54)	.130 (3.30) .134(3.40)	.438 (11.11)	.275(6.99) .270(6.86)	.438 (11.11)
2	3/16	3/8 24UNF-2B	.219 (5.56)	.297 (7.54)	.190(4.83) .194(4.93)	.438 (11.11)	.338(8.59) .333(8.46)	.500 (12.70)
3	1/4	1/2 20UNF-2B	.281 (7.14)	.359 (3.13)	.255(6.48) .259(6.58)	.563 (14.29)	.454(11.53) .449(11.40)	.625 (15.88)
4	5/16	9/16 18UNF-2B	.281 (7.14)	.390 (3.92)	.318(8.08) .322(8.18)	.578 (14.68)	.512(13.00) .505(12.83)	.688 (17.46)
5	3/8	5/8 18UNF-2B	.313 (7.94)	.422 (10.72)	.380(9.65) .384(9.75)	.625 (15.88)	.575(14.61) .568(14.43)	.750 (19.05)
6	1/2	3/4 16UNF-2B	.328 (3.33)	.453 (11.51)	.506(12.85) .510(12.95)	.688 (17.46)	.693(17.60) .686(17.42)	.875 (22.23)
7	5/8	15/16 16UN-2B	.375 (9.53)	.469 (11.91)	.633(16.08) .637(16.18)	.750 (19.05)	.881(22.38) .874(22.20)	1.125 (28.58)
8	3/4	1-1/16 16UN-2B	.406 (10.32)	.500 (12.70)	.758(19.25) .762(19.35)	.813 (20.64)	1.005(25.53) .999(25.37)	1.250 (31.75)
9	7/8	1-3/16 16UN-2B	.406 (10.32)	.500 (12.70)	.883(22.43) .887(22.53)	.813 (20.64)	1.131(28.73) 1.124(28.55)	1.375 (34.93)
10	1	1-5/16 16UN-2B	.406 (10.32)	.500 (12.70)	1.008(25.60) 1.012(25.70)	.813 (20.64)	1.256(31.90) 1.249(31.72)	1.500 (38.10)
11	1-1/4	1-5/8 16UN-2B	.406 (10.32)	.578 (14.68)	1.206(30.63) 1.264(32.11)	.844 (31.43)	1.568(39.83) 1.561(39.65)	2 (50.80)
12	1-1/2	1-7/8 16UN-2B	.500 (12.70)	.672 (17.07)	1.510(38.35) 1.514(38.46)	.969 (34.61)	1.818(46.18) 1.810(45.97)	2.250 (57.15)

NOTES:

1. Dimensions are in inches, unless otherwise specified. Millimeters are in parentheses.
2. Metric equivalents are given for general information only.
3. Unless otherwise specified, the tolerance for 3 place decimals is decimals $\pm .005$, the tolerance for fractions is $\pm 1/64$, the tolerance for degrees is $\pm 2^\circ$.
4. Threads shall be in accordance with FED-STD-H28A.
5. Referenced documents shall be of the issue in effect in date of invitations for bid.
6. This illustration is for identification and is not intended to restrict designs or shapes not dimensioned.

FIGURE 1. Nuts, tube coupling – safety sleeve compression type – Continued.

MS39210G

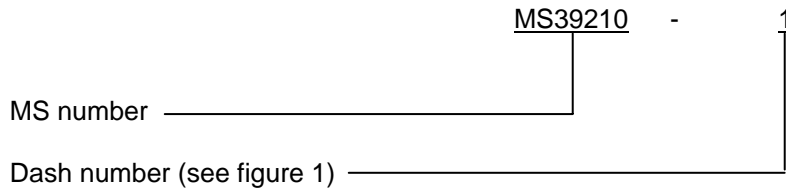
REQUIREMENTS:

Dimensions and configuration: See figure 1.

Material: Carbon steel AISI-C1112, AISI-C1113, AISI-C1117, AISI-C1118 or AISI-C1137 in accordance with SAE-AMS-STD-66.

Finish: Cadmium plated in accordance with SAE-AMS-QQ-P-416, type II, class 3.

Part or Identifying Number (PIN) example: (PIN covers the complete item with nuts and sleeves.)



Reference documents. This document references the following:

AISI-C1112	FED-STD-H28A
AISI-C1113	SAE-AMS-STD-66
AISI-C1117	SAE-AMS-QQ-P-416
AISI-C1118	
AISI-C1137	

Changes from previous issue. Marginal notations are not used in this revision to identify changes with respect to the previous issue due to the extent of the changes.

CONCLUDING MATERIAL

Custodians:
 Army - AT
 DLA - CC

Preparing activity:
 DLA - CC

(Project 4730-2620-000)

NOTE: The activities listed above were interested in this document as of the date of this document. Since organizations and responsibilities can change, you should verify the currency of the information above using the ASSIST Online database at <http://assist.daps.dla.mil>.