

INCH-POUND

MS39207F
 29 March 2005
 SUPERSEDING
 MS39207E
 26 February 1982

DETAIL SPECIFICATION SHEET

ELBOWS, TUBE - SAFETY SLEEVE
 COMPRESSION TYPE, 90 DEGREE

This specification is approved for use by all Departments and Agencies of the Department of Defense.

The requirements for acquiring the product described herein shall consist of this specification sheet.

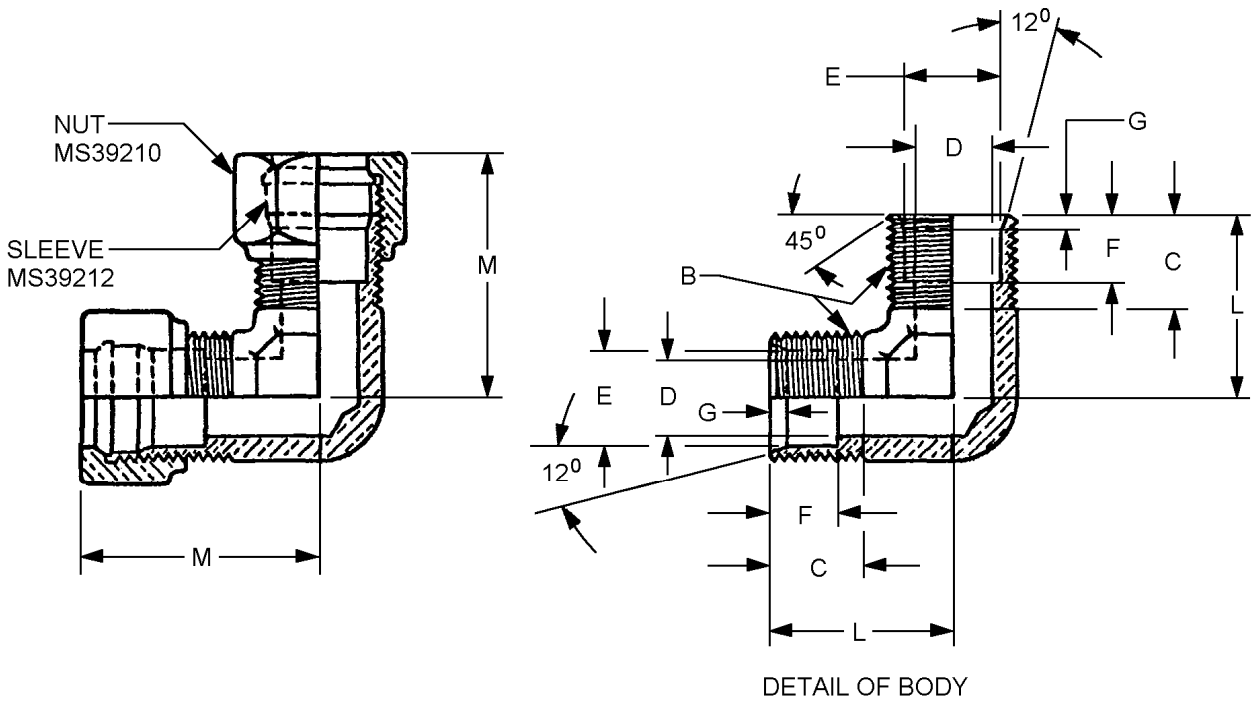


FIGURE 1. Elbows, tube-safety sleeve compression type, 90 degree.

MS39207F

Dash number.	Tube O.D.	B	C Thread Length (mm)	D (mm)	E (mm)	F (mm)	G (mm)	L (mm)	M (mm)
1	1/8	5/16-24UNF-2A	9/32 (7.14)	3/32 (2.38)	.135 (3.43) .139 (3.53)	13/64 (5.16)	1/8 (3.18)	21/32 (16.67)	31/32 (34.61)
2	3/16	3/8-24UNF-2A	9/32 (7.14)	1/8 (3.18)	.196 (4.98) .200 (5.08)	1/4 (6.35)	5/32 (3.97)	21/32 (16.67)	31/32 (34.61)
3	1/4	1/2-20UNF-2A	25/64 (3.92)	13/64 (5.16)	.261 (6.63) .265 (6.73)	19/64 (7.54)	13/64 (5.16)	3/4 (19.05)	1 5/32 (39.37)
4	5/16	9/16-18UNF-2A	25/64 (3.92)	13/64 (5.16)	.324 (8.23) .328 (8.33)	19/64 (7.54)	13/64 (5.16)	13/16 (20.64)	1 3/16 (30.16)
5	3/8	5/8-18UNF-2A	7/16 (11.11)	9/32 (7.14)	.386 (9.80) .390 (9.91)	19/64 (7.54)	13/64 (5.16)	15/16 (23.81)	1 3/8 (34.93)
6	1/2	3/4-16UNF-2A	7/16 (11.11)	27/64 (10.71)	.514 (13.06) .518 (13.16)	5/16 (7.94)	13/64 (5.16)	1 1/8 (28.58)	1 21/32 (42.07)
7	5/8	15/16-16UN-2A	15/32 (11.91)	1/2 (12.70)	.641 (16.28) .645 (16.38)	11/32 (8.73)	15/64 (5.95)	1 5/16 (33.34)	1 27/32 (46.83)
8	3/4	1 1/16-16UN-2A	15/32 (11.91)	21/32 (16.67)	.766 (19.46) .770 (19.56)	11/32 (8.73)	13/64 (5.16)	1 1/2 (38.10)	2 3/32 (53.18)
9	7/8	1 3/16-16UN-2A	15/32 (11.91)	23/32 (18.26)	.891 (22.63) .895 (22.73)	11/32 (8.73)	13/64 (5.16)	1 3/4 (44.45)	2 11/32 (59.53)
10	1	1 5/16-16UN-2A	5/32 (3.97)	7/8 (22.23)	1.016 (25.81) 1.020 (25.91)	13/32 (10.32)	13/64 (5.16)	1 3/4 (44.45)	2 11/32 (59.53)
11	1 1/4	1 5/8-16UN-2A	35/64 (13.89)	1 3/32 (3.38)	1.270 (32.26) 1.274 (32.36)	13/32 (10.32)	13/64 (5.16)	2 1/4 (57.15)	2 7/8 (73.03)
12	1 1/2	1 7/8-16UN-2A	9/16 (14.29)	1 11/32 (9.73)	1.520 (38.61) 1.524 (38.71)	15/32 (11.91)	13/64 (5.16)	2 3/8 (60.33)	3 1/16 (77.79)

NOTES:

1. Unless otherwise specified, dimensions are in inches.
2. Metric equivalents are given for information only.
3. Unless otherwise specified, the tolerance for 3 place decimals is $\pm .005$, the tolerance for fractions is $\pm 1/64$, the tolerance for degrees is $\pm 2^\circ$.
4. Threads shall be in accordance with FED-STD-H28/2.

FIGURE 1. Elbows, tube-safety sleeve compression type, 90 degree - Continued.

MS39207F

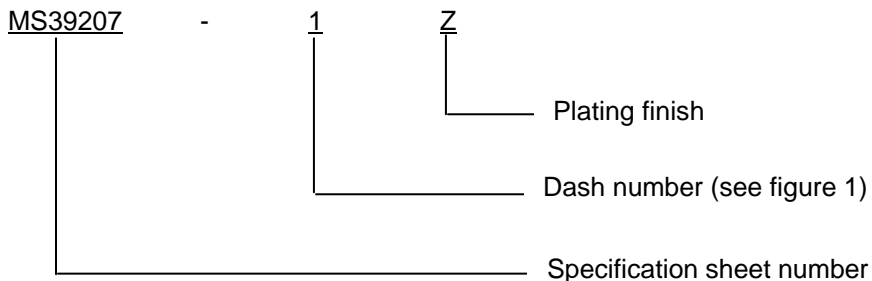
REQUIREMENTS:

Dimensions and configurations: See figure 1.

Material: Steel AISI-C1112, AISI-C1113, AISI-C1117, AISI-C1118 or AISI-C1137 in accordance with SAE-AMS-STD-66.

Plating finish: The plating finish shall be cadmium in accordance with SAE-AMS-QQ-P-416, type II, class 3 or zinc in accordance with ASTM D 633, type II, Fe/Zn5 (sc1).

Part or Identifying Number (PIN) example: (The PIN covers the complete item with nuts and sleeves.)



Plating finish:

Blank - Cadmium (It is recommended that the use of cadmium plating be used only when zinc plating cannot meet performance requirements.)

Z -Zinc

Reference documents. This document references the following:

AISI-C1112	FED-STD-H28/2
AISI-C1113	MS39210
AISI-C1117	MS39212
AISI-C1118	SAE-AMS-STD-66
AISI-C1137	SAE-AMS-QQ-P-416
ASTM D633	

Changes from previous issue. Marginal notations are not used in this revision to identify changes with respect to the previous issue due to the extent of the changes.

MS39207F

CONCLUDING MATERIAL

Custodians:
Army - AT
DLA - CC

Preparing activity:
DLA - CC

(Project 4730-2404-000)

NOTE: The activities listed above were interested in this document as of the date of this document. Since organizations and responsibilities can change, you should verify the currency of the information above using the ASSIST Online database at <http://assist.daps.dla.mil>.