

MS39201F
1 February 2002
 SUPERSEDING
 MS39201E
 26 February 1982

DETAIL SPECIFICATION SHEET

NIPPLE, TUBE-SAFETY SLEEVE COMPRESSION TYPE

This specification is approved for use by all Departments and Agencies of the Department of Defense.

The requirements for acquiring the product described herein shall consist of this specification sheet.

NOTICE OF INACTIVATION FOR
 NEW DESIGN AS OF 29 DEC 1967.

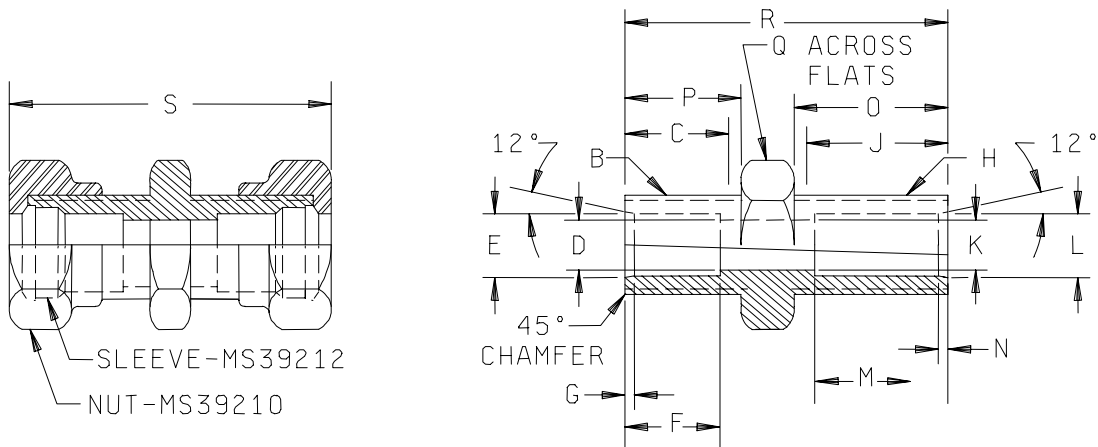


FIGURE 1. Nipples, tube-safety sleeve compression type.

MS39201F

TABLE 1. Nipples, tube-safety sleeve compression type.

| Dash No. | Tube O.D. | | B | C Thread Length | D | E | F | G |
|----------|-----------|-------|-------------------|-----------------------|---------|----------------|-------|-------|
| | | | | | | | | |
| 1 | 1/8 | 1/8 | 5/16 24UNF-2A | 7/32 | 3/32 | .135 .139 | 7/32 | 1/8 |
| 2 | 3/16 | 3/16 | 3/8 24UNF-2A | 7/32 | 1/8 | .196 .200 | 1/4 | 11/64 |
| 3 | 1/4 | 1/4 | 1/2 20UNF-2A | 21/64 | 13/64 | .261 .265 | 19/64 | 13/64 |
| 4 | 5/16 | 5/16 | 9/16 18UNF-2A | 21/64 | 15/64 | .324 .328 | 19/64 | 13/64 |
| 5 | 3/8 | 3/8 | 5/8 18UNF-2A | 23/64 | 9/32 | .386 .390 | 19/64 | 13/64 |
| 6 | 1/2 | 7/16 | 3/4 16UNF-2A | 11/32 | 27/64 | .514 .518 | 5/16 | 13/64 |
| 7 | 1/2 | 1/2 | 3/4 16UN-2A | 11/32 | 27/64 | .514 .518 | 5/16 | 13/64 |
| 8 | 5/8 | 5/8 | 15/16 16UN-2A | 23/64 | 1/2 | .641 .645 | 11/32 | 15/64 |
| 9 | 3/4 | 3/4 | 1-1/16 16UN-2A | 23/64 | 21/32 | .766 .770 | 11/32 | 13/64 |
| 10 | 7/8 | 7/8 | 1-3/16 16UN-2A | 23/64 | 23/32 | .891 .895 | 11/32 | 13/64 |
| 11 | 1 | 1 | 1-5/16 16UN-2A | 23/64 | 7/8 | 1.016 1.020 | 13/32 | 13/64 |
| 12 | 1-1/4 | 1-1/4 | 1-5/8 16UN-2A | 7/16 | 1-3/32 | 1.270 1.274 | 13/32 | 13/64 |
| 13 | 1-1/2 | 1-1/2 | 1-7/8 16UN-2A | 15/32 | 1-11/32 | 1.520 1.524 | 15/32 | 13/64 |

MS39201F

TABLE 1. Nipples, tube-safety sleeve compression type – continued.

| Dash No. | H | J | K | L | M | N | O | P | Q | R | S |
|----------|-------------------|-------|---------|----------------|-------|-------|-------|-------|-------|--------|---------|
| 1 | 5/16 24UNF-2A | 7/32 | 3/32 | .135 .139 | 7/32 | 1/8 | 9/32 | 9/32 | 7/16 | 3/4 | 1-5/16 |
| 2 | 3/8 24UNF-2A | 7/32 | 1/8 | .196 .200 | 1/4 | 11/64 | 9/32 | 9/32 | 1/2 | 49/64 | 1-5/16 |
| 3 | 1/2 20UNF-2A | 21/64 | 13/64 | .261 .265 | 19/64 | 13/64 | 13/32 | 13/32 | 5/8 | 1 | 1-3/4 |
| 4 | 9/16 18UNF-2A | 21/64 | 15/64 | .324 .328 | 19/64 | 13/64 | 13/32 | 13/32 | 11/16 | 1 | 1-3/4 |
| 5 | 5/8 18UNF-2A | 23/64 | 9/32 | .386 .390 | 19/64 | 13/64 | 7/16 | 7/16 | 3/4 | 1-3/32 | 1-15/16 |
| 6 | 11/16 16NS-2A | 23/64 | 9/32 | .450 .454 | 19/64 | 13/64 | 7/16 | 7/16 | 7/8 | 1-3/32 | 1-31/32 |
| 7 | 3/4 16UNF-2A | 11/32 | 27/64 | .514 .518 | 5/16 | 13/64 | 7/16 | 7/16 | 7/8 | 1-3/32 | 2 |
| 8 | 15/16 16UN-2A | 23/64 | 1/2 | .641 .645 | 11/32 | 15/64 | 29/64 | 29/64 | 1-1/8 | 1-1/4 | 2-1/4 |
| 9 | 1-1/16 16UN-2A | 23/64 | 21/32 | .766 .770 | 11/32 | 13/64 | 29/64 | 29/64 | 1-1/4 | 1-1/4 | 2-3/8 |
| 10 | 1-3/16 16UN-2A | 23/64 | 23/32 | .891 .895 | 11/32 | 13/64 | 29/64 | 29/64 | 1-3/8 | 1-5/16 | 2-7/16 |
| 11 | 1-5/16 16UN-2A | 23/64 | 7/8 | 1.016 1.020 | 13/32 | 13/64 | 29/64 | 29/64 | 1-1/2 | 1-5/16 | 2-7/16 |
| 12 | 1-5/8 16UN-2A | 7/16 | 1-3/32 | 1.270 1.274 | 13/32 | 13/64 | 35/64 | 35/64 | 2 | 1-1/2 | 2-7/8 |
| 13 | 1-7/8 16UN-2A | 15/32 | 1-11/32 | 1.520 1.524 | 15/32 | 13/64 | 9/16 | 9/16 | 2-1/4 | 1-1/2 | 2-15/16 |

NOTES:

1. Dimensions are in inches.
2. Referenced documents shall be of the issue in effect in date of invitations for bid.
3. This illustration is for identification and is not intended to restrict designs or shapes not dimensioned.

MS39201F

REQUIREMENTS:

Dimensions and configuration: See figure 1.

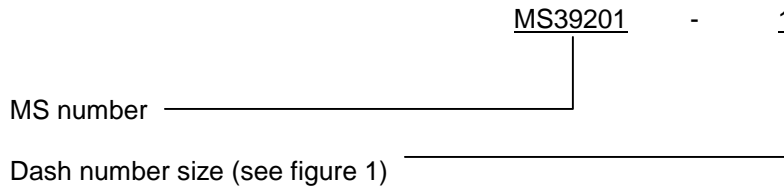
Material: Carbon steel in accordance with SAE-AMS-STD-66, AISI-C-1112, C-1113, C-1117, C-1118 or C-1137.

Finish: Cadmium plated, specification QQ-P-416, type II, class 3. To the users of this document, it is recommended that the use of steel and cadmium plating be used only when other materials and finishes specified in the document cannot meet performance requirements.

Tolerances: Unless otherwise specified, decimals ± 0.005 , fractions $\pm 1/64$, degrees $\pm 2^\circ$.

Threads: The threads shall be in accordance with FED-STD-H28A.

Part or Identifying Number (PIN) example: (PIN covers the complete item with nuts and sleeves.)



CONCLUDING MATERIAL

Custodians:
Army - AT
DLA - CC

Preparing activity:
DLA - CC

(Project 4730-2191)