

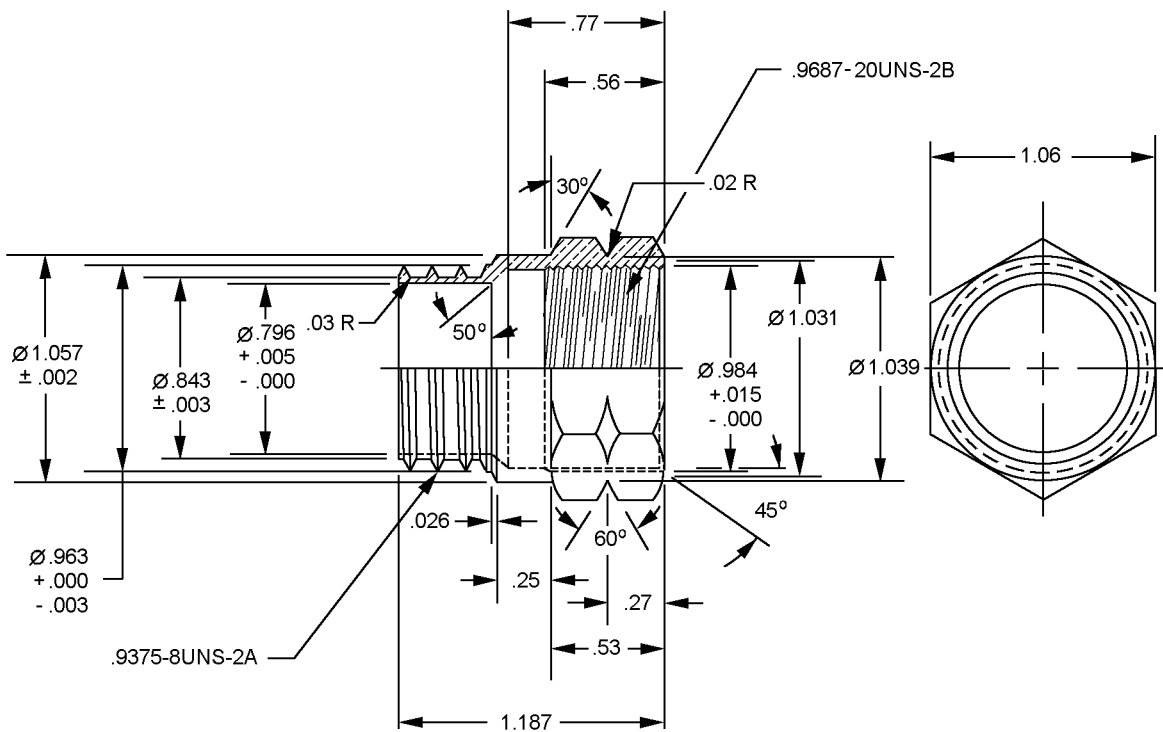
INCH-POUND
 MS39135G
 24 May 2010
 SUPERSEDING
 MS39135F
 4 January 1999

DETAIL SPECIFICATION SHEET

NUT, HOSE COUPLING, AUTOMOTIVE AIR BRAKE HOSE ADAPTER

This specification is approved for use by all Departments and Agencies of the Department of Defense.

The requirements for acquiring the product described herein shall consist of this specification sheet.



Inches	mm	Inches	mm	Inches	mm
0.002	0.051	0.25	6.350	0.963	24.460
0.003	0.076	0.27	6.858	0.984	24.994
0.005	0.127	0.53	13.462	1.031	26.187
0.015	0.381	0.56	14.224	1.039	26.391
0.02	0.508	0.77	19.558	1.057	26.848
0.026	0.660	0.796	20.218	1.06	26.924
0.03	0.762	0.843	21.412	1.187	30.150

FIGURE 1. Hose coupling nut.

MS39135G

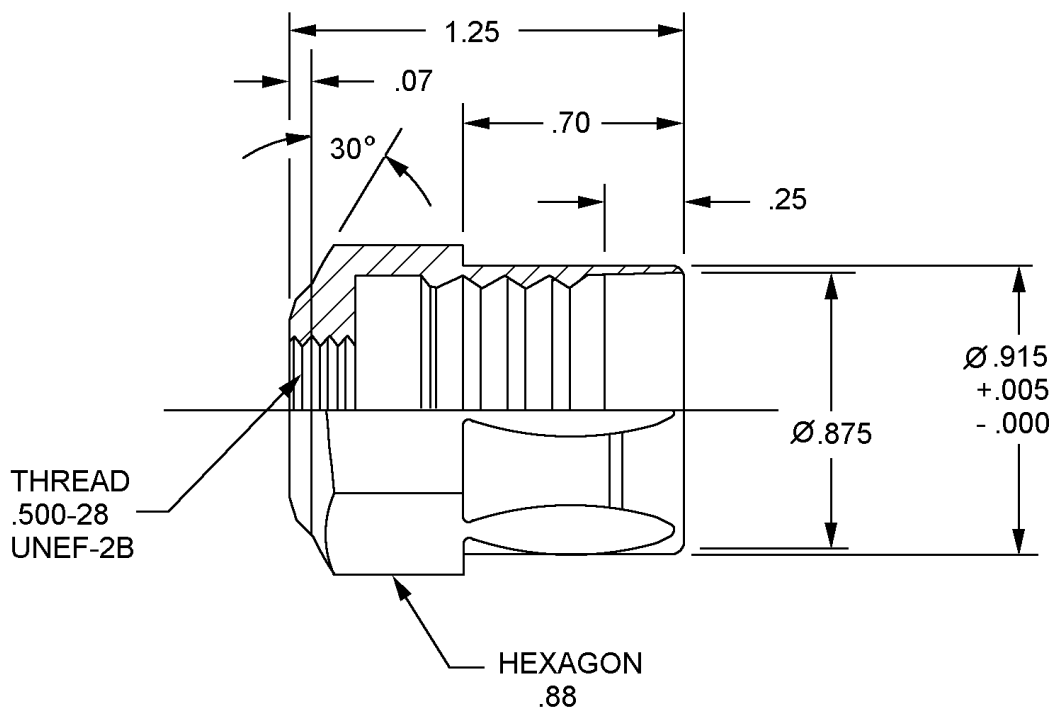
TABLE I. Nut materials.

MS dash number	Material
-1-B	Brass
-1-S	Steel

NOTES:

1. All dimensions are in inches.
2. Metric equivalents are given for information only.
3. For design feature purposes, this document takes precedence over acquisition documents referenced herein.
4. In the event of a conflict between the text of this specification sheet and the references cited herein, the text of this specification sheet shall take precedence.
5. Part or Identifying Number (PIN).
Example of a PIN: MS39135-1-B.

FIGURE 1. Hose coupling nut - Continued.



Inches	mm	Inches	mm
0.005	0.127	0.875	22.225
0.07	1.778	0.915	23.241
0.25	6.350	1.25	31.750
0.70	17.780		

FIGURE 2. Alternate design, hose coupling, nut.

MS39135G

TABLE II. Alternate design nut materials.

MS dash number	Material
-A-1-B	Brass
-A-1-S	Steel

FIGURE 2. Alternate design, hose coupling, nut – Continued.

REQUIREMENTS:

Nuts shall be as specified on figures 1 and 2 and tables I and II.

The nuts specified herein are a component of the adapter, straight pipe to hose, automotive air brake hose MS39133.

Materials shall conform to formed rod, tempered, half-hard brass as specified in ASTM-B16/B16M and steel as specified in ASTM-A108.

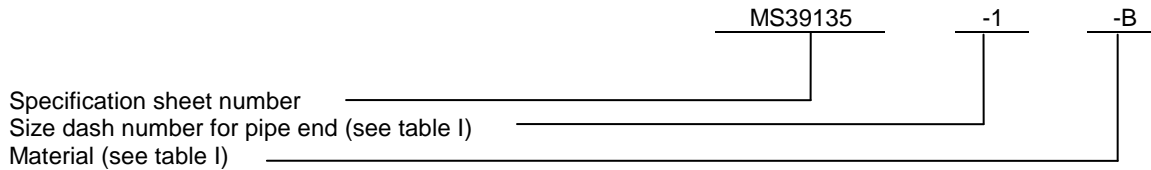
Finishes for brass shall be uncoated and steel shall be zinc coated, thickness not less than 25µm, type II, as specified in ASTM-B633.

Tolerances for the nut, unless otherwise specified, are as follows:

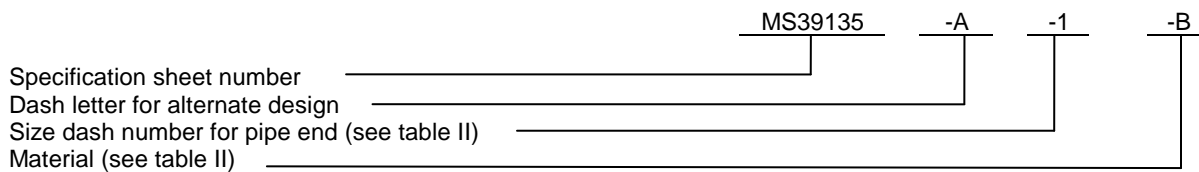
.XXX = ±.005
 .XX = ±.02
 Angles ±2°

Threads shall be in accordance with FED-STD-H28/2 and ASME-B1.1.

Example of a PIN: MS39135-1-B



Example of a PIN, alternate design: MS39135-A-1-B.



MS39135G

Changes from previous issue. The margins of this specification are marked with vertical lines to indicate where changes from the previous issue were made. This was done as a convenience only and the Government assumes no liability whatsoever for any inaccuracies in these notations. Bidders and contractors are cautioned to evaluate the requirements of this document based on the entire content irrespective of the marginal notations and relationship to the last previous issue.

Referenced documents. This document references the following:

MS39133
FED-STD-H28/2
ASME-B1.1
ASTM-A108
ASTM-B16/B16M
ASTM-B633

CONCLUDING MATERIAL

Custodians:
Army – AT
Navy – SH
Air Force – 99
DLA – CC

Preparing activity:
DLA - CC

(Project 4730-2010-061)

Review activities:
Army – AR, EA
Navy – MC, SA
Air Force – 71

NOTE: The activities listed above were interested in this document as of the date of this document. Since organizations and responsibilities can change, you should verify the currency of the information above using the ASSIST Online database at <https://assist.daps.dla.mil>.