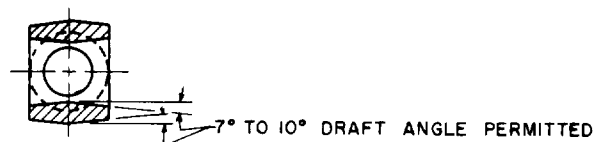


FED. SUP CLASS
5340USER ACTIVITIES:
ARMY - AT, GL, ME, MI
NAVY - MC, OS, YDREVIEW ACTIVITIES:
ARMY - AV, IS, AR
NAVY - SH

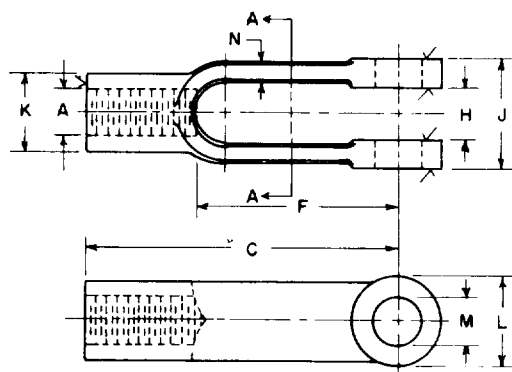
when applicable.

DISTRIBUTION STATEMENT A. Approved for public release; distribution is unlimited.

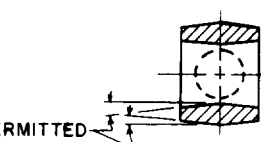
This military standard has been approved by the Department of Defense and is mandatory for use by all Departments and Agencies of the Department of Defense. Selection for all new engineering and design applications and for repetitive use shall be made from this document.



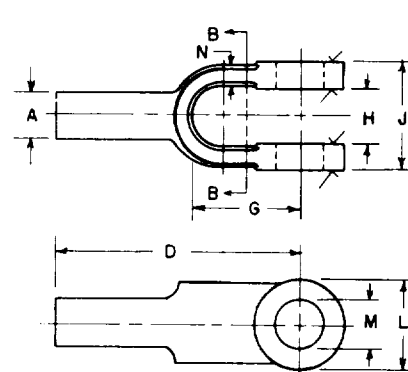
SECTION AA



ADJUSTABLE



SECTION BB



PLAIN

TABLE I - CLEVIS, ROD-END, ADJUSTABLE

DASH NO.	THREADS A	LENGTH C	CLEAR-ANCE IN JAW REF F	WEB THICK-NESS MIN N	WIDTH		DIAMETER		DIA OF HOLE M		WEIGHT (APPROX) LBS	ULTIMATE (MIN) AXIAL LOAD LBS
					OPEN-ING ±.01 H	OVER-ALL ±.01 J	BODY ±.03 K	BOSS ±.03 L	SIZE (E)	TOLER-ANCE ±.0010 (E)		
1	#10-32UNF-2B	1.56	1.00	0.09	0.19	0.44	0.31	0.38	.1875	-.0010	0.03	900
2	1/4-28UNF-2B	2.00	1.25	0.14	0.28	0.62	0.44	0.50	.2500	-.0010	0.07	1800
3	5/16-24UNF-2B	2.25	1.44	0.17	0.34	0.75	0.50	0.59	.3125	-.0010	0.11	2900
4	3/8-24UNF-2B	2.50	1.62	0.19	0.44	0.88	0.62	0.69	.3750	-.0010	0.17	4400
5	7/16-20UNF-2B	2.88	1.88	0.22	0.50	1.00	0.72	0.81	.4375	-.0010	0.24	6000
11	1/2-20UNF-2B	3.00	1.88	0.25	0.56	1.12	0.81	0.94	.5000	-.0020	0.39	8200
6	1/2-20UNF-2B	4.19	3.06	0.25	0.56	1.12	0.81	0.94	.5000	-.0020	0.39	8200
7	5/8-18UNF-2B	4.94	3.69	0.31	0.69	1.38	1.06	1.19	.6250	-.0020	0.88	13200
8	3/4-16UNF-2B	6.06	4.56	0.38	0.81	1.62	1.25	1.44	.7500	-.0020	1.51	19300
9	7/8-14UNF-2B	7.12	5.25	0.44	0.94	1.88	1.44	1.69	.8750	-.0020	2.21	26400
10	1-12UNF-2B	8.00	6.00	0.50	1.06	2.12	1.62	1.94	1.0000	-.0020	2.80	35500

TABLE II - CLEVIS, ROD-END, PLAIN

DASH NO.	NOMINAL DIAMETER A	LENGTH D	CLEAR-ANCE IN JAW REF G	WEB THICK-NESS MIN N	WIDTH		DIAMETER OF BOSS ±.03 L	DIA OF HOLE M		WEIGHT (APPROX) LBS	ULTIMATE (MIN) AXIAL LOAD LBS
					OPEN-ING ±.01 H	OVER-ALL ±.01 J		SIZE (E)	TOLER-ANCE ±.0010 (E)		
31	#10(.190)	1.25	0.44	0.09	0.19	0.44	0.38	.1875	-.0010	0.02	1500
32	1/4	1.75	0.62	0.14	0.28	0.62	0.50	.2500	-.0010	0.05	2700
33	5/16	2.00	0.75	0.17	0.34	0.75	0.59	.3125	-.0010	0.08	4200
34	3/8	2.12	0.84	0.19	0.44	0.88	0.69	.3750	-.0010	0.11	6000
35	7/16	2.25	1.00	0.22	0.50	1.00	0.81	.4375	-.0010	0.18	8200
36	1/2	2.50	1.12	0.25	0.56	1.12	0.94	.5000	-.0020	0.24	10700
37	5/8	2.88	1.44	0.31	0.69	1.38	1.19	.6250	-.0020	0.46	16800
38	3/4	3.62	1.69	0.38	0.81	1.62	1.44	.7500	-.0020	0.86	24300
39	7/8	4.00	2.00	0.44	0.94	1.88	1.69	.8750	-.0020	1.31	33000
40	1	4.50	2.50	0.50	1.06	2.12	1.94	1.0000	-.0020	1.76	43200

NOTE: For material, protective coating, and other pertinent data see sheet 2.

(L) For changes see sheets 1

P.A. AR	TITLE	MILITARY STANDARD
Other Cust AS 82	CLEVIS, ROD END-ADJUSTABLE AND PLAIN, STEEL	MS35812
PROCUREMENT SPECIFICATION MIL-C-45918	SUPERSEDES: EEX1 and EEBX1	SHEET 1 OF 2

DD FORM 672-1 (Coordinated)

PREVIOUS EDITIONS OF THIS FORM ARE OBSOLETE.

AWSC/NA

5340-1815

APPROVED 15 JUNE 1961 REVISED (A) 30 JUNE 1966 (B) 17 MAR 1967 (C) 8 MAY 1970 (D) 1 JULY 1983 (E) 27 FEB 1967

FED. SUP CLASS
5340

USER ACTIVITIES:
ARMY - AT, SL, ME, MI
NAVY - MC, OS, YD

REVIEW ACTIVITIES:
ARMY - AV, IS, AR
NAVY - SH

MATERIAL: Steel, carbon, SAE 1010, 1111, AISI-C1015 - C1029 or equivalent in accordance with Fed. Std. No. 66. These steels shall have a minimum tensile strength of 55,000 PSI.

PROTECTIVE COATING: Zinc coated (hot dipped galvanized) in accordance with ASTM 123.
Zinc (electrodeposited) in accordance with QQ-Z-325.

THREADS: The threads shall be in accordance with Screw-Thread Standards for Federal Services, Handbook H-27.

SURFACE ROUGHNESS: Surfaces marked ✓ shall have 125 ✓ surface roughness in accordance with ANSI B46.1.

PART NUMBER: The MS part number consists of the MS number, plus the dash number. Example: MS35812-1.

TOLERANCE: Unless otherwise specified, tolerance shall be $\pm .04$.

DIMENSIONS: All dimensions specified are to be met after plating.

NOTES: (1) Unless otherwise specified, all dimensions are in inches.
(2) Remove all burrs and sharp edges.
(3) For design feature purposes, this standard takes precedence over procurement documents referenced herein.
(4) Referenced documents shall be of the issue in effect on date of invitations for bid.
(5) Illustrations are for identification and are not intended to restrict the design or shape not dimensioned.

When applicable, use the following distribution statement:

DISTRIBUTION STATEMENT A Approved for public release; distribution is unlimited.

This military standard has been approved by the Department of Defense and is mandatory for use by all Departments and Agencies of the Department of Defense. Selection for all new engineering and design applications and for repetitive use shall be made from this document.

APPROVED 15 JUNE 1961 REVISED 17 MAR 1947 FOR CHANGES SEE SHEET 1 FOR CHANGES SEE SHEET 1

P.A. AR	TITLE	MILITARY STANDARD
Other Cust AS B2	CLEVIS, ROD END-ADJUSTABLE AND PLAIN, STEEL	MS35812
PROCUREMENT SPECIFICATION MIL-C-45918	SUPERSEDES: EEAX1 and EEBX1	SHEET 2 OF