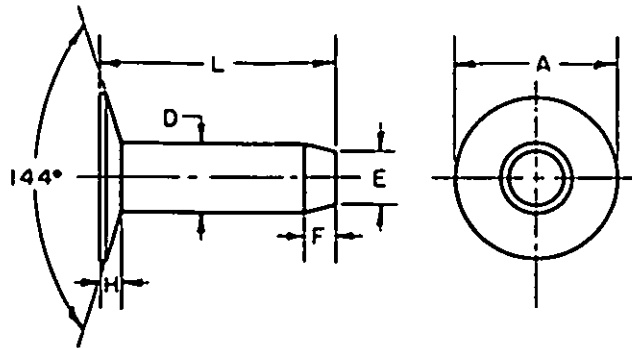


FED. SUP CLASS  
5320
 REVISOR: CL, IS, MI, NI, NSI, 65  
 (SER: AS, AT, CB, CI, CU, ME)

SIZE NO.		7	8	10	12	14
BODY DIAMETER D	NOM	.180	.165	.134	.109	.083
	MAX	.183	.167	.136	.111	.085
	MIN	.174	.161	.130	.105	.079
HEAD DIAMETER A	MAX	.513	.481	.417	.353	.260
	MIN	.487	.455	.395	.333	.240
HEAD HEIGHT H	MAX	.075	.072	.065	.054	.042
	MIN	.056	.054	.047	.040	.030
TIP DIAMETER E		.133	.115	.109	.083	.065
CHAMFER LENGTH F		.125	.094	.094	.078	.065
LENGTH L		DASH NUMBER	DASH NUMBER	DASH NUMBER	DASH NUMBER	DASH NUMBER
1/4	0.250					24
3/8	0.375					25
1/2	0.500	1	6	12	16	26
5/8	0.625	2	7	13	19	27
3/4	0.750	3	8	14	20	
7/8	0.875	4	9	15	21	
1	1.000	5	10	16	22	
			11	17	23	

## NOTES:

- (A) 1. MATERIAL: Copper, in accordance with QQ-V-343, Type 5.
2. PROTECTIVE COATING: Uncoated.
3. DIMENSIONS: All dimensions are in inches.
- (A) 4. TOLERANCES: Length L  $\pm 0.031$  in.,  $-0.00$  in.
5. PART NUMBER: The MS part number consists of the MS number, plus the dash number.  
Example: MS35745-1.
6. For design feature purposes, this standard takes precedence over procurement documents referenced herein.
7. Referenced documents shall be of the issue in effect on date of invitations for bid.

This military standard is mandatory for use by all Departments and Agencies of the Department of Defense. Selection for all new engineering and design applications and for repetitive use shall be made from this document.

P.A. 1C	TITLE	MILITARY STANDARD
Other Code 1D 82	RIVET, SOLID-BELT	MS35745
PROCUREMENT SPECIFICATION FF-R-356	SUPERSEDES In part, DMI1 and DMI2	SHEET 1 OF 1

DD FORM 672-1 (Continued)

PREVIOUS EDITIONS OF THIS FORM ARE OBSOLETE

APPROVED 23 APRIL 56 REVISED (A) 12 DEC 1968