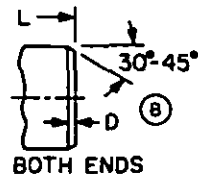
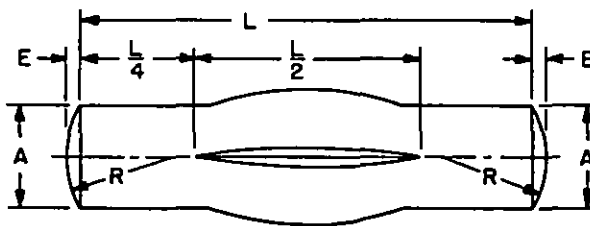
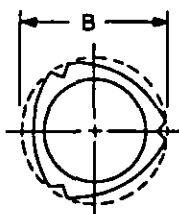


FED. SUP CLASS

5315



BOTH ENDS

REVIEWER: AV, EA, IS, MI, NS
USER: AT, CL, MC, ME, MU, WY

NOMINAL SIZE		.0625	.0781	.0938	.125
A DIAMETER	MAX MIN	.0625 .0615	.0781 .0771	.0938 .0928	.1250 .1230
D CHAMFER LENGTH* (B)	MIN	.016	.016	.016	.016
E CROWN HEIGHT*	REF	.006	.009	.009	.013
R RADIUS	±.010	.078	.094	.125	.156
RECOMMENDED HOLE SIZE	MAX MIN	.0640 .0625	.0798 .0781	.0956 .0938	.1271 .1250
SINGLE SHEAR STRENGTH LBS-MIN		270	430	620	1100
L LENGTH	±.010	DASH NO.	B DIA ±.001	DASH NO.	B DIA ±.001
.250	(B)	1	.066	6	.082
.375		2	.066	7	.082
.500		3	.066	8	.082
.625		4	.066	9	.082
.750		5	.066	10	.099
1.000				11	.099
1.250				12	.099
1.500				13	.099
				14	.099
				15	.132
				16	.132
				17	.132
				18	.132
				19	.132
				20	.132
				21	.132

NOMINAL SIZE		.1562	.1875	.2188	.250
A DIAMETER	MAX MIN	.1562 .1542	.1875 .1855	.2188 .2168	.2500 .2480
D CHAMFER LENGTH* (B)	MIN	.031	.031	.031	.031
E CROWN HEIGHT*	REF	.017	.018	.022	.026
R RADIUS	±.010	.188	.250	.281	.312
RECOMMENDED HOLE SIZE	MAX MIN	.1587 .1562	.1903 .1875	.2219 .2188	.2534 .2500
SINGLE SHEAR STRENGTH LBS-MIN		1720	2480	3380	4420
L LENGTH	±.010	DASH NO.	B DIA ±.002	DASH NO.	B DIA ±.002
.500	(B)	22	.164	28	.195
.625		23	.164	29	.195
.750		24	.164	30	.195
1.000		25	.164	31	.195
1.250		26	.164	32	.195
1.500		27	.164	33	.195
1.750				34	.195
2.000				35	.195
2.250					
				36	.227
				37	.227
				38	.227
				39	.227
				40	.227
				41	.227
				42	.227
				43	.260
				44	.260
				45	.260
				46	.260
				47	.260
				48	.260
				49	.260
				50	.260

NOTES:

- (B) 1. **MATERIAL:** Corrosion-resisting steel, 300 series, in accordance with Fed. Std. No. 66. The minimum ultimate shear strength shall be 90,000 PSI.
2. **PROTECTIVE COATING:** Passivated in accordance with QQ-P-35.
3. **DIMENSIONS:** All dimensions are in inches, unless otherwise specified.
4. **APPLICATION:** Grooved pins are locked securely in place by elastic deformation, eliminating the need for tapping or reaming of tapered or sized holes.
5. **PART NUMBER:** The MS part number consists of the MS number, plus the dash number.
Example: MS35678-1.
6. Diameter "B" is the expanded diameter as measured with a ring gage.
- *7. Ends may be crowned or chamfered or may be square with .01 to .02 radius on the edges.
8. Referenced documents shall be of the issue in effect on date of invitations for bid.
9. For design feature purposes, this standard takes precedence over procurement documents referenced herein.

This military standard is approved for use by all Departments and Agencies of the Department of Defense. Selection for all new engineering and design applications and for repetitive use shall be made from this document.

P.A. VC	TITLE	MILITARY STANDARD
Other Cust AS 82	PIN, GROOVED, HEADLESS - LONGITUDINAL CENTER GROOVE, CORROSION-RESISTING STEEL	MS35678
PROCUREMENT SPECIFICATION MIL-P-20700	SUPERSEDES: AEG12 in part	SHEET 1 OF 1