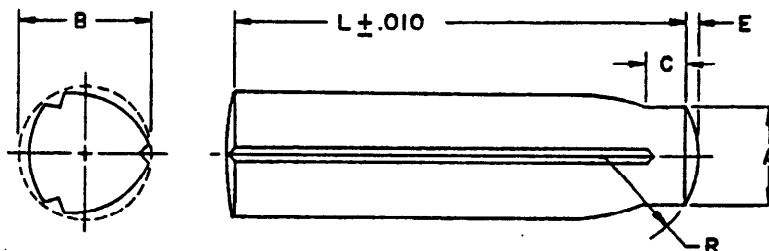


FED. SUP CLASS
5315

REVIEWER: MI, MO, MU, WC, SH, WP, 69, IS
USER: MC, YD, NSA

| NOMINAL SIZE | | 1/16 | | 5/64 | | 3/32 | | 1/8 | | 5/32 | | 3/16 | |
|-----------------------------|----------|--------------|----------|--------------|----------|--------------|----------|--------------|----------|--------------|----------|--------------|----------|
| A DIAMETER | MAX | .0625 | | .0781 | | .0938 | | .1250 | | .1563 | | .1875 | |
| | MIN | .0615 | | .0771 | | .0928 | | .1230 | | .1543 | | .1855 | |
| C PILOT LENGTH | REF | .0312 | | .0312 | | .0312 | | .0312 | | .0625 | | .0625 | |
| E *CROWN HEIGHT | REF | .0065 | | .0087 | | .0091 | | .0130 | | .0170 | | .0180 | |
| R RADIUS | MAX | .0881 | | .1037 | | .1350 | | .1662 | | .1975 | | .2600 | |
| | MIN | .0681 | | .0837 | | .1150 | | .1462 | | .1775 | | .2400 | |
| RECOMMENDED HOLE SIZE | MAX | .0640 | | .0798 | | .0956 | | .1271 | | .1587 | | .1903 | |
| | MIN | .0625 | | .0781 | | .0938 | | .1250 | | .1563 | | .1875 | |
| SINGLE SHEAR STRENGTH - LBS | MIN | 120 | | 190 | | 270 | | 490 | | 760 | | 1100 | |
| L LENGTH | DASH NO. | B DIA. ±.001 | DASH NO. | B DIA. ±.001 | DASH NO. | B DIA. ±.001 | DASH NO. | B DIA. ±.002 | DASH NO. | B DIA. ±.002 | DASH NO. | B DIA. ±.002 | DASH NO. |
| 1/4 | 201 | .068 | 205 | .084 | | | | | | | | | |
| 3/8 | 202 | .068 | 206 | .084 | 210 | .101 | 214 | .134 | | | | | |
| 1/2 | 203 | .068 | 207 | .084 | 211 | .101 | 215 | .134 | 220 | .166 | 225 | .198 | |
| 5/8 | 204 | .068 | 208 | .084 | 212 | .101 | 216 | .134 | 221 | .166 | 226 | .198 | |
| 3/4 | | | 209 | .084 | 213 | .101 | 217 | .134 | 222 | .166 | 227 | .198 | |
| 1 | | | | | | | 218 | .133 | 223 | .165 | 228 | .198 | |
| 1-1/4 | | | | | | | 219 | .132 | 224 | .164 | 229 | .197 | |
| 1-1/2 | | | | | | | | | | | 230 | .197 | |
| 1-3/4 | | | | | | | | | | | 231 | .197 | |

For additional sizes see sheet 2.

MATERIAL: Brass, bar or wire, 1/2 hard, in accordance with the procurement specification.**PROTECTIVE COATING:** Black oxide in accordance with the procurement specification.**APPLICATION:** Grooved pins are locked securely in place by elastic deformation eliminating the need for tapping or reaming of tapered or sized holes.**DIMENSIONS:** All dimensions are in inches unless otherwise specified.**PART NUMBER:** The MS part number consists of the MS number plus the dash number. Example: MS35676-201.**NOTES:** (1) Diameter "B" is the expanded diameter as measured with a ring gage.

* (2) Ends of pins may be square with .01-inch to .02-inch radius on the edges.

(3) For design feature purposes, this standard takes precedence over procurement documents referenced herein.

(4) Referenced documents shall be of the issue in effect on date of invitations for bid.

Ⓐ ENTIRE STANDARD REVISED

P.A. WC
Other Cust WP
69

TITLE

PIN, GROOVED, HEADLESS - LONGITUDINAL
STRAIGHT GROOVE, BRASS

MILITARY STANDARD

MS 35676

PROCUREMENT SPECIFICATION
MIL-P-20700

SUPERSEDES:

AEGX2 in part

SHEET 1 OF 2

This military standard has been approved by the Department of Defense and is mandatory for use by all Departments and Agencies of the Department of Defense. Selection for all new engineering and design applications and for repetitive use shall be made from this document.

APPROVED 11 JAN 56 REVISED Ⓐ 17 MAR 1965

REVIEWER: MI, MO, MU, WC, SH, WP, 69, IS
USER: MC, YD, NSA

| | | | | | | | | | | | FFO, SUP CLASS 5315 | | | | |
|-----------------------------|-----|----------|--------------|----------|--------------|----------|--------------|----------|--------------|----------|------------------------|----------|--------------|----------|--------------|
| NOMINAL SIZE | | 7/32 | | 1/4 | | 5/16 | | 3/8 | | 7/16 | | 1/2 | | | |
| A DIAMETER | MAX | .2188 | | .2500 | | .3125 | | .3750 | | .4375 | | .5000 | | | |
| | MIN | .2168 | | .2480 | | .3105 | | .3730 | | .4355 | | .4980 | | | |
| C PILOT LENGTH | REF | .0625 | | .0625 | | .0937 | | .0937 | | .0937 | | .0937 | | | |
| E *CROWN HEIGHT | REF | .0220 | | .0260 | | .0340 | | .0390 | | .0470 | | .0520 | | | |
| R RADIUS | MAX | .2912 | | .3225 | | .3850 | | .4787 | | .5412 | | .6350 | | | |
| | MIN | .2712 | | .3025 | | .3650 | | .4587 | | .5212 | | .6150 | | | |
| RECOMMENDED HOLE SIZE | MAX | .2219 | | .2534 | | .3166 | | .3797 | | .4428 | | .5060 | | | |
| | MIN | .2188 | | .2500 | | .3125 | | .3750 | | .4375 | | .5000 | | | |
| SINGLE SHEAR STRENGTH - LBS | | MIN | | 1500 | | 1960 | | 3070 | | 4420 | | 6010 | | 7850 | |
| L LENGTH | | DASH NO. | B DIA. ±.002 | DASH NO. | B DIA. ±.002 | DASH NO. | B DIA. ±.002 | DASH NO. | B DIA. ±.002 | DASH NO. | B DIA. ±.002 | DASH NO. | B DIA. ±.002 | DASH NO. | B DIA. ±.002 |
| 5/8 | | 232 | .230 | 238 | .263 | 245 | .329 | | | | | | | | |
| 3/4 | | 233 | .230 | 239 | .263 | 246 | .329 | | | | | | | | |
| 1 | | 234 | .230 | 240 | .263 | 247 | .329 | 257 | .394 | | | | | | |
| 1-1/4 | | 235 | .230 | 241 | .263 | 248 | .329 | 259 | .394 | 269 | .459 | 281 | .525 | | |
| 1-1/2 | | 236 | .229 | 242 | .262 | 249 | .329 | 260 | .394 | 271 | .459 | 283 | .525 | | |
| 1-3/4 | | 237 | .229 | 243 | .262 | 250 | .328 | 261 | .393 | 272 | .459 | 284 | .525 | | |
| 2 | | | | 244 | .262 | 251 | .328 | 262 | .393 | 273 | .458 | 285 | .525 | | |
| 2-1/4 | | | | | | 252 | .328 | 263 | .393 | 274 | .458 | 286 | .524 | | |
| 2-1/2 | | | | | | 253 | .327 | 264 | .393 | 275 | .458 | 287 | .524 | | |
| 2-3/4 | | | | | | 254 | .327 | 265 | .393 | 276 | .458 | 288 | .524 | | |
| 3 | | | | | | 255 | .327 | 266 | .392 | 277 | .457 | 289 | .523 | | |
| 3-1/4 | | | | | | | | | | | | 290 | .523 | | |
| 3-1/2 | | | | | | 256 | .326 | 267 | .391 | 278 | .456 | 291 | .522 | | |
| 3-3/4 | | | | | | | | | | | | 292 | .522 | | |
| 4 | | | | | | | | 268 | .390 | 279 | .455 | 293 | .521 | | |
| 4-1/4 | | | | | | | | | | | | 294 | .521 | | |
| 4-1/2 | | | | | | | | | | 280 | .454 | 295 | .520 | | |

*See note (2), sheet 1.

For illustration, material, protective coating, and other pertinent data see sheet 1.

INTERCHANGEABILITY TABLE

The pins covered by the dash numbers given in original issue of this standard are cancelled after the approval date on this document. Use the dash numbers given above and in the preceding sheet of this revision. The cancelled pins cannot always replace the new pins and should be used until existing stocks are depleted. Use only the new pins for design and replacement. Replacement shall be in accordance with this table.

| PART NUMBERS | | PART NUMBERS | | PART NUMBERS | |
|--------------|-------------|--------------|-------------|--------------|-------------|
| CANCELLED | NEW | CANCELLED | NEW | CANCELLED | NEW |
| MS35676-1 | MS35676-201 | MS35676-33 | MS35676-233 | MS35676-65 | MS35676-265 |
| -2 | -202 | -34 | -234 | -66 | -266 |
| -3 | -203 | -35 | -235 | -67 | -267 |
| -4 | -204 | -36 | -236 | -68 | -268 |
| -5 | -205 | -37 | -237 | -69 | -269 |
| -6 | -206 | -38 | -238 | -70 | -270 |
| -7 | -207 | -39 | -239 | -71 | -271 |
| -8 | -208 | -40 | -240 | -72 | -272 |
| -9 | -209 | -41 | -241 | -73 | -273 |
| -10 | -210 | -42 | -242 | -74 | -274 |
| -11 | -211 | -43 | -243 | -75 | -275 |
| -12 | -212 | -44 | -244 | -76 | -276 |
| -13 | -213 | -45 | -245 | -77 | -277 |
| -14 | -214 | -46 | -246 | -78 | -278 |
| -15 | -215 | -47 | -247 | -79 | -279 |
| -16 | -216 | -48 | -248 | -80 | -280 |
| -17 | -217 | -49 | -249 | -81 | -281 |
| -18 | -218 | -50 | -250 | -82 | -282 |
| -19 | -219 | -51 | -251 | -83 | -283 |
| -20 | -220 | -52 | -252 | -84 | -284 |
| -21 | -221 | -53 | -253 | -85 | -285 |
| -22 | -222 | -54 | -254 | -86 | -286 |
| -23 | -223 | -55 | -255 | -87 | -287 |
| -24 | -224 | -56 | -256 | -88 | -288 |
| -25 | -225 | -57 | -257 | -89 | -289 |
| -26 | -226 | -58 | -258 | -90 | -290 |
| -27 | -227 | -59 | -259 | -91 | -291 |
| -28 | -228 | -60 | -260 | -92 | -292 |
| -29 | -229 | -61 | -261 | -93 | -293 |
| -30 | -230 | -62 | -262 | -94 | -294 |
| -31 | -231 | -63 | -263 | -95 | -295 |
| -32 | -232 | -64 | -264 | | |

This military standard has been approved by the Department of Defense and is mandatory for use by all Departments and Agencies of the Department of Defense. Selection for all new engineering and design applications and for repetitive use shall be made from this document.

| | | |
|--|--|-------------------------------|
| P.A. WC Other Cust WP 69 | TITLE PIN, GROOVED, HEADLESS - LONGITUDINAL STRAIGHT GROOVE, BRASS | MILITARY STANDARD MS 35676 |
| PROCUREMENT SPECIFICATION MIL-P-20700 | SUPERSEDES: AEGX2 in part | SHEET 2 OF |