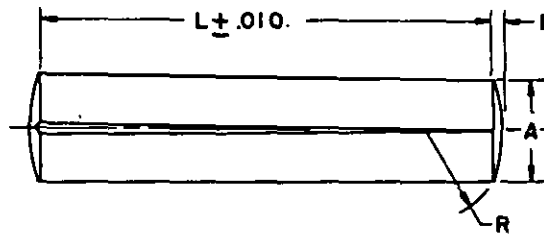
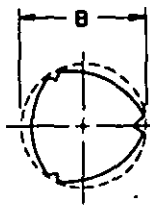


FED. SUP CLASS
5315

NOMINAL SIZE		3/64		1/16		5/64		3/32		1/8		
A DIAMETER	MAX	.0469		.0625		.0781		.0938		.1250		
	MIN	.0459		.0615		.0771		.0928		.1230		
E *CROWN HEIGHT	REF	----		.0065		.0087		.0091		.0130		
R RADIUS	MAX	----		.0881		.1037		.1350		.1662		
	MIN	----		.0681		.0837		.1150		.1462		
RECOMMENDED HOLE SIZE	MAX	.0478		.0640		.0798		.0956		.1271		
	MIN	.0465		.0625		.0781		.0938		.1250		
SINGLE SHEAR STRENGTH - LBS	MIN	110		200		310		440		790		
L LENGTH	DASH NUMBER	B		DASH NUMBER	B		DASH NUMBER	B		DASH NUMBER	B	
		DIAMETER ±.001		DIAMETER ±.001		DIAMETER ±.001		DIAMETER ±.001		DIAMETER ±.002		DIAMETER ±.002
3/16	1	.051										
1/4	2	.051		6	.068	11	.084					
3/8	3	.051		7	.068	12	.084					
1/2	4	.051		8	.068	13	.084	16	.101	21	.134	
5/8	5	.051		9	.068	14	.084	17	.101	22	.134	
3/4				10	.068	15	.084	18	.101	23	.134	
1								19	.101	24	.134	
1-1/4								20	.101	25	.133	
1-1/2										26	.132	
										27	.132	

For additional sizes see sheet 2.

MATERIAL: Steel, cold-drawn, B1112 or 1212, in accordance with the procurement specification.**PROTECTIVE COATING:** Cadmium plate in accordance with the procurement specification.**APPLICATION:** Grooved pins are locked securely in place by elastic deformation eliminating the need for tapping or reaming of tapered or sized holes.**DIMENSIONS:** All dimensions are in inches unless otherwise specified.**PART NUMBER:** The MS part number consists of the MS number plus the dash number. Example: MS35671-1.**NOTES:** (1) Dash numbers for cadmium plated pins as shown on this revised standard are the same as the dash numbers for the cadmium or zinc plated (optional) pins shown on the original standard.

* (2) Diameter "B" is the expanded diameter as measured with a ring gage.

(3) Ends of pins may be square with .01-inch to .02-inch radius on the edges.

(4) For design feature purposes, this standard takes precedence over procurement documents referenced herein.

(5) Referenced documents shall be of the issue in effect on date of invitations for bid.

(A)

ENTIRE STANDARD REVISED

P.A. WC	TITLE	MILITARY STANDARD
Other Cust WP	PIN, GROOVED, HEADLESS - LONGITUDINAL	
69	TAPER GROOVE, CARBON STEEL	MS35671
PROCUREMENT SPECIFICATION MIL-P-20700	SUPERSEDES:	SHEET 1 OF 2
	BFCX3, BFCX3.1, BFCX3.2 and in part AECX2	

DD FORM 672-1 (Continued)

PREVIOUS EDITIONS OF THIS FORM ARE OBSOLETE.

REVIEWER: MI, MO, MU, WC, SH, WP, 69, IS
USER: MC, YD, NSA

This military standard has been approved by the Department of Defense and is mandatory for use by all Departments and Agencies of the Department of Defense. Selection for all new engineering and design applications and for repetitive use shall be made from this document.

APPROVED 11 JAN 56 REVISED (A) 17 MAR 1965

FED. SUP CLASS
5315REVIEWER: MI,MO,MU,WC,SH,WP,69,IS
USER: MC,YD,NSA

NOMINAL SIZE		5/32	3/16	7/32	1/4	3/8
A DIAMETER	MAX	.1563	.1875	.2188	.2500	.3750
	MIN	.1543	.1855	.2168	.2480	.3730
E *CROWN HEIGHT	REF	.0170	.0180	.0220	.0260	.0390
R RADIUS	MAX	.1975	.2600	.2912	.3225	.4787
	MIN	.1775	.2400	.2712	.3025	.4587
RECOMMENDED HOLE SIZE	MAX	.1587	.1903	.2219	.2534	.3797
	MIN	.1563	.1875	.2188	.2500	.3750
SINGLE SHEAR STRENGTH - LBS	MIN	1230	1770	2400	3140	7070
L LENGTH	DASH NUMBER	B DIAMETER ±.002	DASH NUMBER	B DIAMETER ±.002	DASH NUMBER	B DIAMETER ±.002
1/2	28	.166	34	.198		
5/8	29	.166	35	.198		
3/4	30	.166	36	.198	43	.230
1	31	.165	37	.198	44	.230
1-1/4	32	.164	38	.197	45	.230
1-1/2	33	.164	39	.197	46	.229
1-3/4			40	.197	47	.229
2			41	.196	48	.229
2-1/4			42	.196	49	.229
2-1/2					50	.228
2-3/4					51	.228
					52	.263
					53	.263
					54	.263
					55	.263
					56	.262
					57	.262
					58	.262
					59	.262
					60	.261
					61	.261
					62	.394
					63	.394
					64	.394
					65	.394
					66	.393
					67	.393
					68	.393
					69	.393
					70	.393

*See Note (3), sheet 1.

For illustration, material protective coating, and other pertinent data see sheet 1.

This military standard has been approved by the Department of Defense and is mandatory for use by all Departments and Agencies of the Department of Defense. Selection for all new engineering and design applications and for repetitive use shall be made from this document.

P.A. WC	TITLE	MILITARY STANDARD
Other Cust WP 69	PIN, GROOVED, HEADLESS-LONGITUDINAL TAPER GROOVE, CARBON STEEL	MS35671
PROCUREMENT SPECIFICATION MIL-P-20700	SUPERSEDES: BFCX3, BFCX3.1, BFCX3.2 and in part AEGX2	SHEET 2 OF