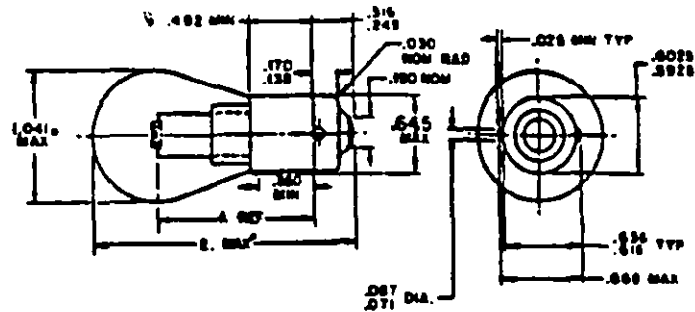


1
 USER ACTIVITIES:
 ARMY - AT
 NAVY - 6H
 NAVY - Y1

REVIEW ACTIVITIES:
 ARMY - AV, M1
 NAVY - AS
 AFJ FOUNC - R2
 USA - GS



PEC SUP CLASS
 6240

INCHES	MM
.025	.64
.030	.76
.071	1.80
.087	2.21
.134	3.41
.170	4.32
.190	4.83
.249	6.32
.316	8.03
.350	8.89
.482	12.30
.625	15.88
.6275	15.93
.638	16.21
.641	16.28
.645	16.38
.645	16.39
1.041	26.44
1.125	28.54
1.182	30.03
1.250	31.75
2.000	50.80

MS PART NUMBER ①	CANDLE POWER	DESIGN		LIGHT CENTER LENGTH A	FILAMENT CONST	FILAMENT CONST (OPTIONAL)	AVERAGE LIFE (HOURS)
		VOLTS	AMPS				
MS35478-1129	21.75	6.40	2.63.47	1.250	C-4		300
MS35478-07	15.05	8.75	1.81.87	1.125	C-2R	C-4	300
MS35478-03	15.05	12.00	1.04.87	1.125	C-2R	C-4	600
MS35478-1141	21.105	12.00	1.44.67	1.250	C-4		300
MS35478-301	15.157	28.00	.61.87	1.125	C-2V		300
MS35478-307	21.159	28.00	.67.87	1.125	C-2V		300
MS35478-307 SB ②	21.159 ②	28.00	.67.87	1.125	C-2V		300
MS35478-307 P ②	21.159 ②	28.00	.67.87	1.125	C-2V		300
MS35478-315 ①	22.105	28.00	.90.87	1.125	C-2V		300
MS35478-1682	22.157	28.00	1.02.87	1.250	2C-2P	2C-6	600
MS35478-1691	15.105	28.00	.81.87	1.125	2C-2R	2C-2V	1000
MS35478-1687 ①	22.105	8.00	4.10.87	1.250	C-4		360
MS35478-1073	22.105	12.00	1.00.87	1.250	C-4		700
MS35478-1685 17	21.157	28.00	.90.87	1.125	C-2V		1000
MS35478-2222	15.255	28.00	.645.105	1.182	CC-6		1000
MS35478-2221	21.255	28.00	.766.105	1.182	CC-1		1000
MS35478-BFT	32	8	.75	1.25	C-6		50
MS35478-2605	21 APPROX	6.4	2.69	1.25	C-2V		200

NOTES:

- Dimensions are in inches.
- Metric equivalents (to the nearest .01 mm) are given for general information only and are based upon 1 inch = 25.4 mm.
- For design feature purposes, this standard takes precedence over procurement documents referenced herein.
- This standard is not intended to limit construction to features other than as shown herein by dimensions, notations, and referenced documents.
- Referenced documents shall be of the issue in effect on date of invitations for bid.
- MS part numbers correlate with lamp industry trade numbers.
- To obtain satisfactory life, lamps must be operated in horizontal position only.
- All coatings on lamps shall firmly adhere, be uniform throughout, and shall not discolor, crack, fade, or peel.
 The coloring shall be red, in accordance with MIL-C-25050 at the rated voltage, when first turned on and at stabilized operating temperature.
 Reflectorized coating: Top of bulb to the filament center shall be sensitized to receive a .005 (.13 mm) coating of pure silver, followed by a protective copper deposit, and then overlapping aluminum flakes; as an optional procedure, the reflectorized coating may be aluminumized by vacuum deposition.
- Candle power for lamps -307 SB and -307 R applies to lamps before red or reflectorized coating is applied.
 Certain provisions of this standard, identified by an asterisk (*) are the subject of international standardization agreement, NATO, STANAG 4008, and ABC-ARMY-STD-121, when revision or cancellation of this standard is proposed which will affect or violate the international agreement concerned, the preparing activity will take appropriate reconciliation action through international standardization channels, including departmental standardization offices, if required.

This military standard is controlled by the Department of Defense and is mandatory on all activities. Substitution by all non-military and other organizations and for requirements shall be made from this document.

APPROVED BY: P. H. H. REVIEW (J) 30 JUNE 1976 (S) 29 JUNE 1977

P.A. ARMY-AT Other: NAVY-6H AF-11	TITLE LAMP, INCANDESCENT, S-B BULB, SINGLE CONTACT, BAYONET CANDELABRA BASE	MILITARY STANDARD MS 35478
PROCUREMENT SPECIFICATION W-L-111	SUPERSEDES MS 25232 (ASG), MS 0035478 (USAF), MS 19566 (SHIPS)	SHEET 1 OF 1