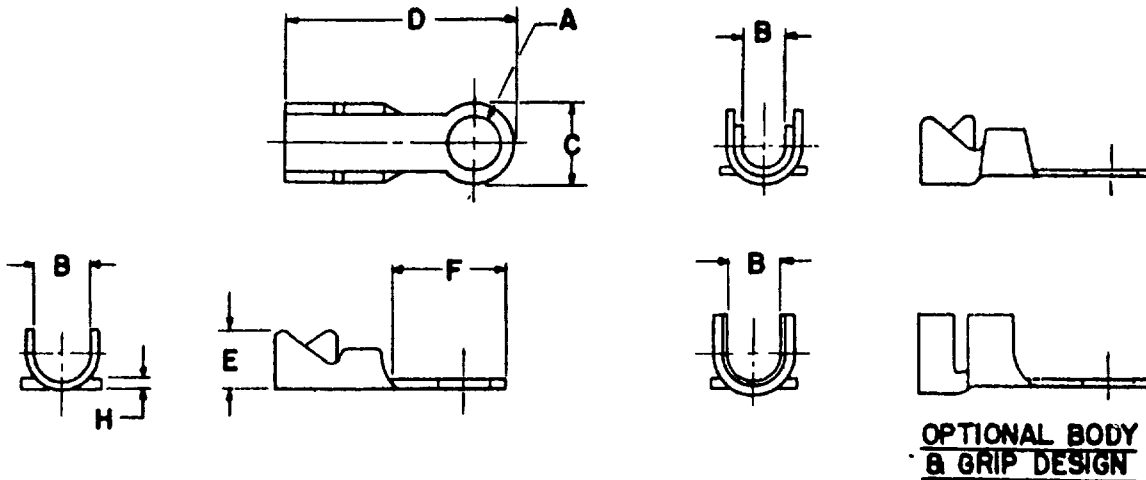


This document has been promulgated by the Department of Defense as the military standard to limit the selection of the item, product or design covered herein in engineering, design and procurement. This standard shall become effective not later than 90 days after the latest date of approval shown.

FED SUP CLASS

5940



DASH NO.	FIN ③	WIRE SIZE AWG NOM	STUD SIZE	A		B	C	D	E	F	H ± .003				
				HOLE	DIA										
												MIN	MAX		
1	_____	18-20	1/4	.258	.285	1/8	15/32	55/64	15/64	35/64	.032				
2	_____		5/16	.320	.347										
3	_____	14-16	4	.115	.127	3/16	9/32	57/64	5/16	25/64					
4	_____		6	.141	.153										
5	_____		8	.167	.179										
6	_____		10	.193	.205		9/16	1-5/32	21/32						
7	_____		1/4	.258	.285										
8	_____		5/16	.320	.347					11/16		1-3/8	27/32		
9	_____		3/8	.383	.410										
10	_____	10-12	8	.167	.179	1/4	11/32	63/64	25/64	31/64	.040				
11	_____		10	.193	.205							9/16	1-5/32	21/32	
12	_____		1/4	.258	.285										11/16
13	_____		5/16	.320	.347		1-3/8	27/32							
14	_____		3/8	.383	.410					1-15/32		31/32			
15	_____		7/16	.448	.475								13/16	1-9/16	
16	_____		1/2	.510	.537										
17	_____	8	10	.193	.205	5/16	9/16	1-13/32	29/64	19/32		.045			
18	_____		1/4	.258	.285								11/16	1-7/32	21/32
19	_____		5/16	.320	.347						13/16				
20	_____		3/8	.383	.410		9/16	1-13/32		9/16			21/32		
21	_____		7/16	.448	.475						13/16			1-5/8	25/32
22	_____	10	.193	.205	1-13/32	23/32									
23	_____	1/4	.258	.285					1-15/32						
24	_____	4-6	5/16	.320	.347	3/8	12/16	9/16		29/32	.102				
25	_____		3/8	.383	.410				1-23/32				1-1/32		
26	_____		7/16	.448	.475							15/16		1-13/16	
27	_____		1/2	.510	.537										
28	080-0975		0-1	3/8	.383		.410		7/16			15/16	8-15/32	45/64	_____
29	080-0974	1/2		.510	.537										

B

B FOR CHANGES SEE SHEETS 2 &amp; 3

CUTTING Dwg Stamp	OTHER INT. • Sig, TC, CE • Wep, Dock •	MILITARY STANDARD TERMINAL, LUG, SOLDER TYPE, COPPER STAMPING, INSULATION GRIP, ONE HOLE	MS35436
PROCUREMENT SPECIFICATION MIL-T-15659	SUPERSEDES:	SHEET 1	OF 3

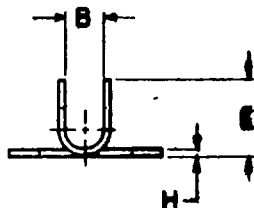
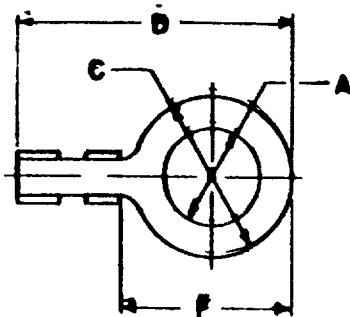
DD FORM 672-1

APPROVED 5 July 55 REVISED A 23 July 56, B 10 February 1961

This document is the property of the United States Government. It is loaned to your organization for your information and use only. It is not to be distributed outside your organization. It is to be returned to the source of issue when it is no longer needed. It is to be kept in a safe place and protected from damage, loss, and theft. It is to be kept in a safe place and protected from damage, loss, and theft. It is to be kept in a safe place and protected from damage, loss, and theft.

FED SUP CLASS

5940

OPTIONAL  
BODY AND GRIP DESIGNS

DASH NO	FPM (B)	WIRE SIZE AWG NOM	STUD SIZE	A HOLE DIA		B	C	D	E	F	H
				MIN	MAX						
30	080-7000	10	6	.141	.153	1/8	9/32	21/32	7/32	21/64	.032
31	087-2800	8	8	.167	.179	5/32	11/32	1	9/32	15/32	.025
32	087-2801		10	.193	.205						
33	080-7000		3/8	.383	.410						
34	087-2801	6	6	.141	.153	3/16	1/2	1-3/32	1/4	19/32	.032
35	087-2807		8	.167	.179						
36	087-2808		10	.193	.205						
37	087-7000		1/4	.258	.285						
38	087-2804	4	6	.141	.153	7/32	1/2	1-3/32	11/32	19/32	.040
39	087-2808		8	.167	.179						
40	087-2810		10	.193	.205						
41	080-7000		12	.221	.236						
42	080-7000		1/4	.258	.285						
43	080-7000										

APPROVED 5 July 55 REVISED

(B)

CUSTODIAN  
ORD  
SWPSOTHER INT.  
A-Signature  
H-Weap Doct  
AF-

MILITARY STANDARD

TERMINAL, LUG, BOLDER TYPE,  
COPPER STAMPING, INSULATION GRIP, ONE HOLE

MS 35436

PROCUREMENT SPECIFICATION  
MIL-T-15659

SUPERSEDED:

SHEET 2 of 3

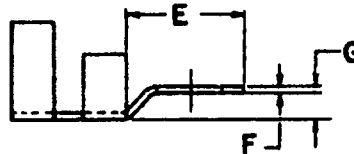
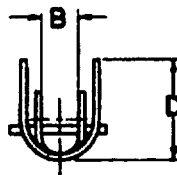
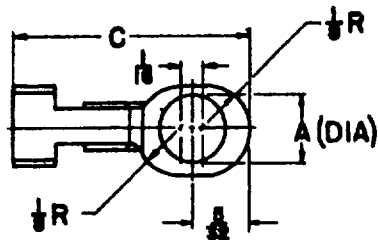
DD FORM 872.1

NOTICE: When Government drawings, specifications, or other data are used for any purpose other than in connection with a definitely related Government procurement operation, the United States Government thereby incurs no responsibility, and no warranty, expressed or implied, for the quality and accuracy of the drawings and specifications, or other data. It is the responsibility of the purchaser to establish that the drawings and specifications, or other data, are suitable for the purpose intended and that the drawings and specifications, or other data, are not to be regarded by implication or otherwise as in any way representing the views of the Government.

FED SUP CLASS

5940

ⓑ SHEET 3 ADDED



DASH NO	WIRE SIZE AWG NOM	STUD SIZE	A		B	C	D	E	F ±.003	G
			MIN	MAX						
44	12	6	.141	.153	3/32	11/16	9/32	11/32	.030	5/64

MATERIAL: COPPER, ANNEALED - SPECIFICATION QQ-C-576.FINISH: HOT TIN DIP OR ELECTRODEPOSITED TIN ALL OVER, MINIMUM THICKNESS .0005 INCHES.

NOTES: 1. ALL DIMENSIONS IN INCHES. TOLERANCE: FRACTIONAL  $\pm 1/64$  UNLESS OTHERWISE SPECIFIED.

2. REMOVE ALL BURRS.

3. REFERENCED DOCUMENTS OF ISSUE IN EFFECT ON DATE OF INVITATION FOR BIDS SHALL APPLY.

4. THE MS PART NUMBER CONSISTS OF THE MS NUMBER PLUS THE DASH NUMBER.

ⓑ

CUSTODIANS Ora Ships	OTHER INT A-SigC, TC, CE N-Wep, Docks AF-	MILITARY STANDARD		MS 35436
		TERMINAL, LUG, SOLDER TYPE, COPPER STAMPING, INSULATION GRIP, ONE HOLE		
PROCUREMENT SPECIFICATION 11C-1-15009		SUPERSEDES:		SHEET 3 OF 3

DD FORM 672-1

NOTICE: When Government drawings, specifications, or other data are used for any purpose other than in connection with a definitely related Government procurement operation, the United States Government thereby incurs no responsibility, and the fact that the Government name is included on these drawings, specifications, or other data is not to be regarded by implication as an endorsement or approval of the quality or value thereof, or as an indication of its suitability for use in any way other than that for which it was designed. The Government assumes no liability for any error or omission in any way, or for any patent infringement that may in any way be related thereto.

APPROVED 5 July 55 REVISED