

INCH-POUND

MS35430C
 15 December 2003
 SUPERSEDING
 MS35430B
 10 February 1961

DETAIL SPECIFICATION SHEET

TERMINAL, LUG, SOLDER TYPE,
 COPPER STAMPING, ONE HOLE

Inactive for new design after 18 October 2000.
--

This specification sheet is approved for use by all departments and agencies of the Department of Defense.

The requirements for acquiring the product described herein shall consist of this specification sheet and MIL-DTL-15659.

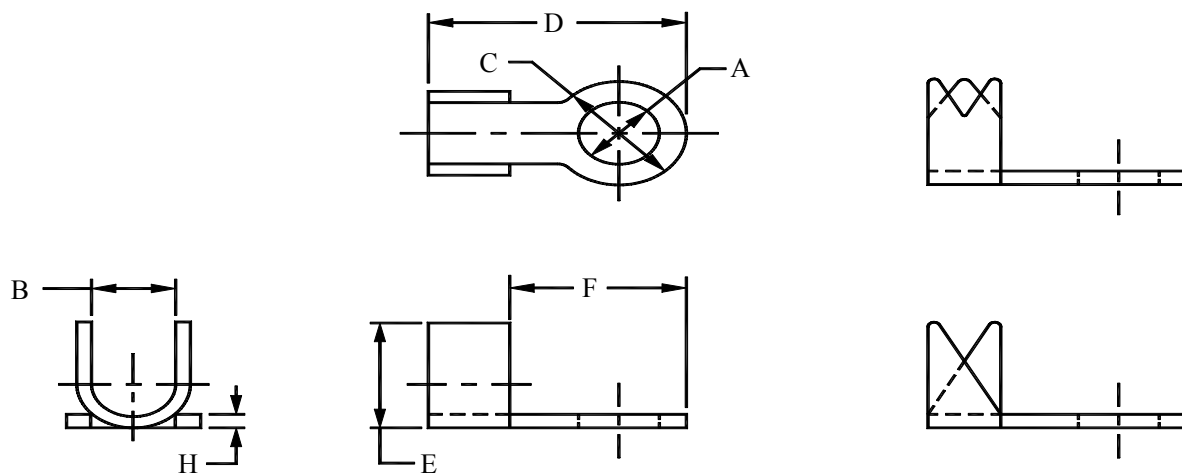


FIGURE 1. Terminal dimensions for -1 through -13 and -27.

FIGURE 2. Optional wire grip designs (see note 4).

MS35430C

TABLE I. Dash numbers and dimensions for -1 through -13 and -27.

Dash no.	Wire size AWG ¹ nominal	Stud size	A		B	C	D ±3/64	E ±3/64	F ±1/32	H ±0.003	
			Min.	Max.							
1	14-20	2	0.089	0.096	5/64	9/64	29/64	3/32	17/64	0.016	
2						9/32	9/16	5/32	25/64	0.020	
3		0.032									
4											
5											
6			10	0.193		0.205					
7	10-12	4	0.115	0.127	5/32	5/16		9/16		3/16	25/64
8		6	0.141	0.153			0.032				
9		8	0.167	0.179							
10		10	0.193	0.205							
11	6-8	6	0.141	0.153	3/16			5/16			0.040
12		8	0.167	0.179							
13		10	0.193	0.205							
27	14-20	6	0.141	0.153	1/16	1/4	1/2	5/32	5/16	0.032	

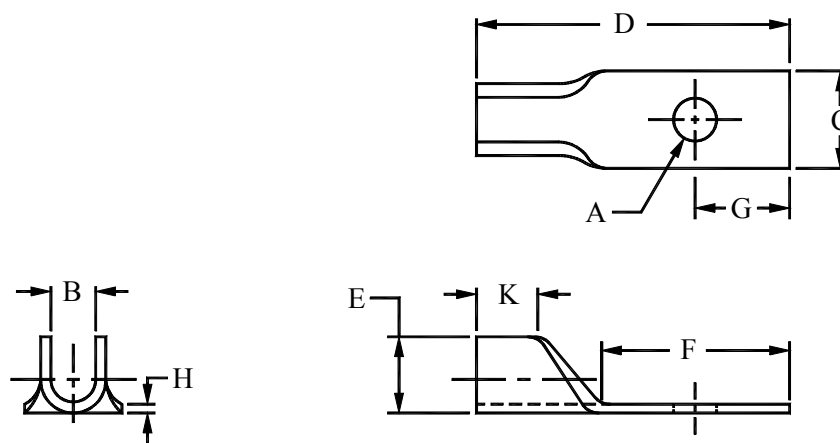
¹American Wire Gauge.

FIGURE 3. Terminal dimensions for -14 and -16 through -18.

MS35430C

TABLE II. Dash numbers and dimensions for -14 and -16 through -18.

Dash no.	Wire size AWG ¹ nominal	Stud size	A		B	C	D	E	F	G	H ±0.003	K
			Min.	Max.								
14	-	6	0.141	0.153		5/16	1 3/32	-	19/32	11/32	-	1/4
16	10	10	0.193	0.205	1/8	3/8	3/4	3/16	7/16	1/4	0.032	3/16
17							1 3/16		5/8	5/16		1/4
18							1 1/4		3/4	3/8		

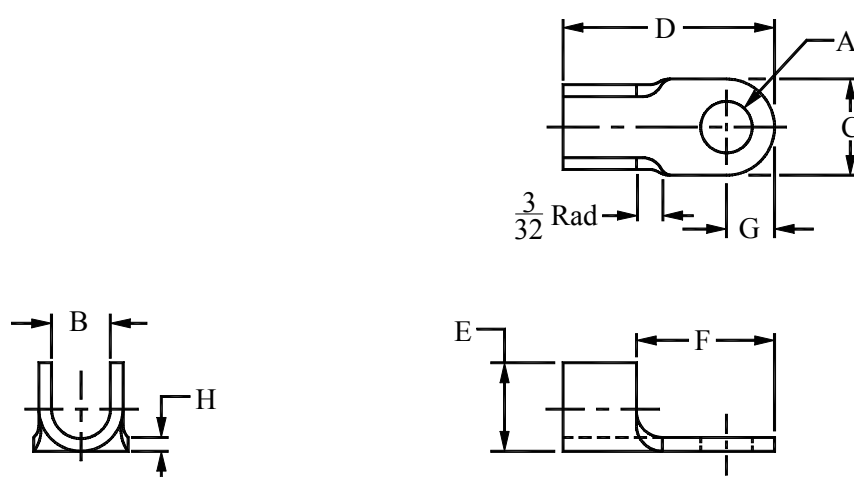
¹American Wire Gauge.

FIGURE 4. Terminal dimensions for -15 and -19 through -23.

TABLE III. Dash numbers and dimensions for -15 and -19 through -23.

Dash no.	Wire size AWG ¹ nominal	Stud size	A		B	C	D	E	F	G	H ±0.003
			Min.	Max.							
15	10	10	0.193	0.205	1/8	5/16	19/32	3/16	-	5/32	0.032
19	1-2	1/4	0.258	0.285	13/32	9/16	1 19/32	25/32	31/32	11/32	0.091
20		5/16	0.320	0.347		11/16					
21		3/8	0.383	0.410							
22	0-00	5/16	0.320	0.347	1/2	3/4	1 11/16	53/64	1	3/8	
23		3/8	0.383	0.410							

¹American Wire Gauge.

MS35430C

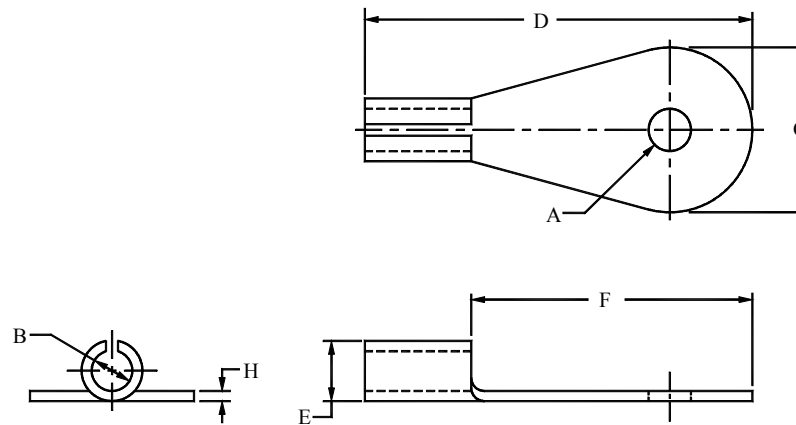


FIGURE 5. Terminal dimensions for -24 through -26.

TABLE IV. Dash numbers and dimensions for -24 through -26.

Dash no.	wire size AWG ¹ nominal	Stud size	A		B	C	D	E	F	H ±0.003
			Min.	Max.						
24	10	4	0.115	0.127	1/8	9/32	1 1/8	3/16	53/64	0.032
25		10	0.193	0.205		3/8	13/16		15/32	
26							1 1/8		13/16	

¹American Wire Gauge.

REQUIREMENTS:

1. Material: Electrolytic copper strip or sheet alloy C11000, temper O60 in accordance with ASTM B 152/B 152M (DoD adopted).

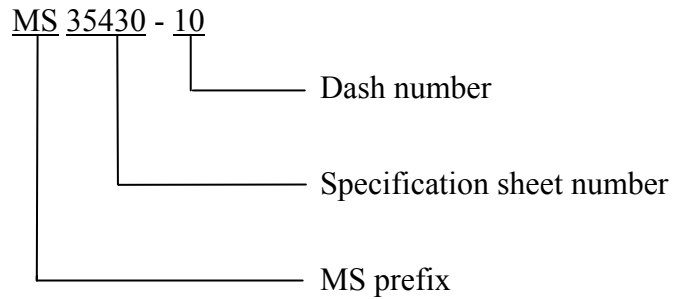
2. Finish: Tinned; electrodeposited over entire surface in accordance with ASTM B 545 (DoD adopted). Minimum thickness 0.0005 inches all over.

NOTES:

1. Dimensions are in inches.
2. Unless otherwise specified, tolerance is $\pm 1/64$.
3. Remove all burrs.
4. Figure 2 optional wire grip design is for -1 through -13 and -27 only.
5. Referenced documents of issue in effect on date of invitation for bids shall apply.
6. In the event of a conflict between the text of this document and the references cited herein, the text of this document shall take preference.

MS35430C

7. The part or identifying number (PIN) consists of the letters MS, the specification sheet number, and a dash number taken from table I, II, III, or IV.



CHANGES FROM PREVIOUS ISSUE: Marginal notations are not used in this revision to identify changes with respect to the previous issue due to the extent of the changes.

Custodians:
Army - MI
Navy - SH
Air Force - 99

Preparing Activity:
DLA - GS2
(Project 5940-1445)