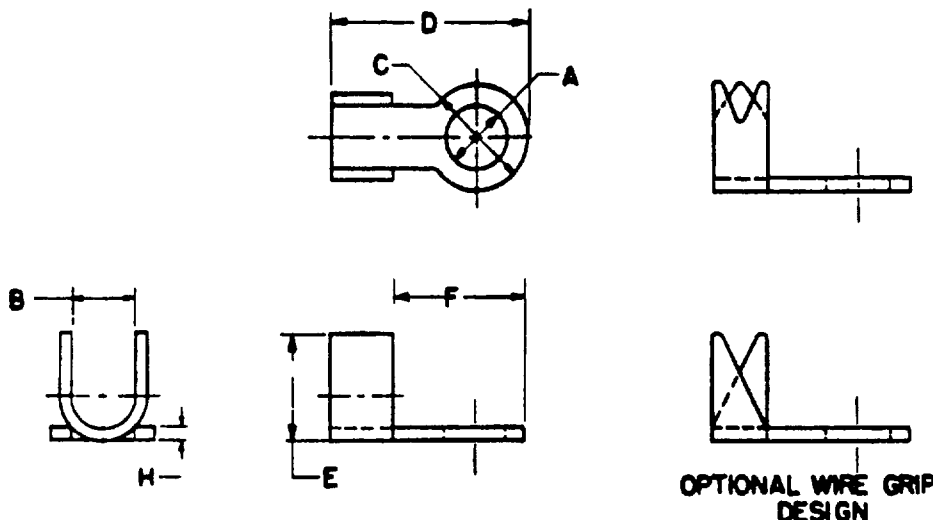


This document has been promulgated by the Department of Defense as the military standard to limit the selection of the item, product or design covered herein in engineering, design and procurement. This standard shall become effective not later than 90 days after the latest date of approval shown.

FED SUP CLASS

5940



DASH NO.	WIRE SIZE (B)	WIRE SIZE (B)	STUD SIZE	HOLE DIA		B	C	D	E	F	H
				MIN	MAX						
1			2	.089	.096		9/64	29/64	3/32	17/64	.016
2	000-6374		4	.115	.127	5/64	9/32		5/32		.020
3	000-6380		6	.141	.153						.032
4	000-6384		8	.167	.179						.020
5	000-6388		10	.193	.205						.032
6	001-6391		4	.115	.127	5/32	5/16	9/16	3/16	25/64	.020
7	000-6392		6	.141	.153						.032
8	000-6396		8	.167	.179						.040
9	000-6398		10	.193	.205						.032
10	001-6402		6	.141	.153	3/16			5/16		.040
11	000-6402		8	.167	.179						.040
12	000-6402		10	.193	.205						.040
13	001-6403		6	.141	.153	1/16	1/4	1/2	5/32	5/16	.032
27	001-6380		6	.141	.153	1/16	1/4	1/2	5/32	5/16	.032

(B) DASH NO. 1: REV DIM. "D" & "F"

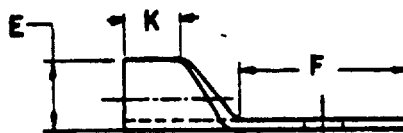
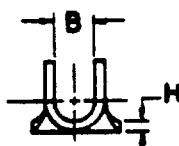
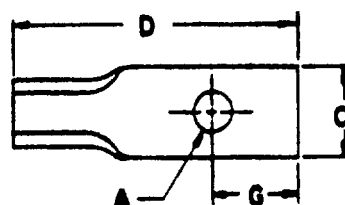
(B)

(B) FOR CHANGES SEE SHEETS 2 & 3

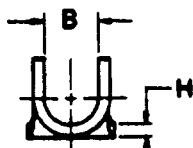
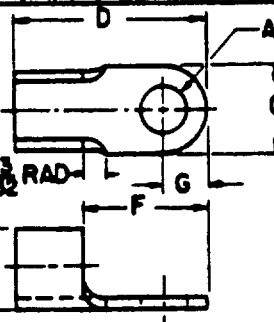
REVISIONS One Sup's	OTHER MT. - S16 C, T, C, E - Wep, Dock M-	<b>MILITARY STANDARD</b> TERMINAL, LUG, SOLDER TYPE, COPPER STAMPING ONE HOLE	<b>MS 35430</b>
MIL-7-15-59		REVISIONS:	SHEET 1 OF 3

DD FORM 672-1

APPROVED 5 JUL 65 REVISED A 23 JULY 56, (B) 10 February 1961

FED SUP CLASS  
5940

DASH NO.	FRTG (B)	WIRE SIZE AWG NOM	STUD SIZE	A HOLE DIA		B	C	D	E	F	G	H ±.003	K
				MIN	MAX								
14	14-1-22-22		6	.141	.153		5/16	1-3/32		19/32	11/32		1/4
15	15-1-22-22							19/32			3/32		1/8
16	16-1-22-22	10	10	.193	.205	1/8	3/8	3/4	3/16	7/16	1/4	.032	3/16
17	17-1-22-22							1-3/16		5/8	5/16		1/4
18	18-1-22-22							1-1/4		3/4	3/8		



DASH NO.	FRTG (B)	WIRE SIZE AWG NOM	STUD SIZE	A HOLE DIA		B	C	D	E	F	G	H ±.003
				MIN	MAX							
19			1/4	.258	.285		9/16					
20		1-2	5/16	.320	.347	13/32	11/16	1-19/32	25/32	31/32	11/32	.091
21			3/8	.383	.410							
22		0-00	5/16	.320	.347	1/2	3/4	1-11/16	53/64	1.	3/8	
23			3/8	.383	.410							
15	15-1-22-22	10	10	.193	.205	1/8	5/16	19/32	3/16		8/32	.032

(B)

CUSTOMERS  
One  
SHIPS

OTHER INT.  
1-810C, TC, CE  
Wep, Docks  
M-

**MILITARY STANDARD**  
**TERMINAL, LUG, SOLDER TYPE,**  
**COPPER STAMPING, ONE HOLE**

**MS 35430**

PROCEDURAL SPECIFICATION  
**MIL-T-15629**

SUPERSEDES:

SHEET 2 OF 3

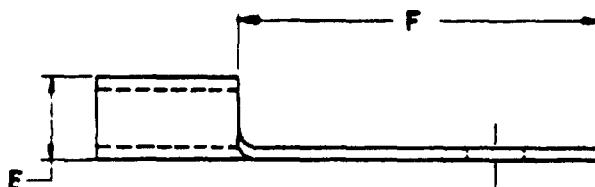
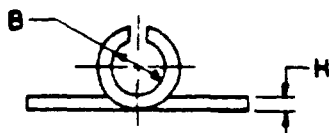
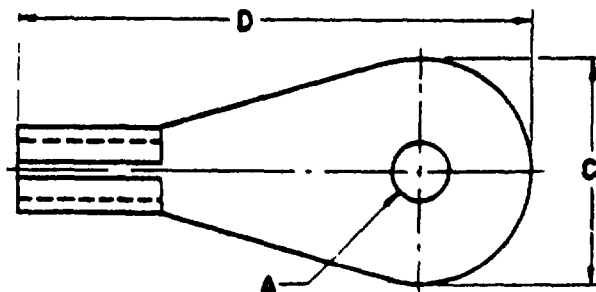
DD FORM 672-1

APPROVED 5 July 55 REVISED

REPRODUCED FROM GOVERNMENT DRAWINGS, SPECIFICATIONS, OR OTHER DATA FOR THE PURPOSE OF REPRODUCING THE INFORMATION THEREIN FOR THE USE OF THE UNITED STATES GOVERNMENT THEREBY INCURRED NO RESPONSIBILITY FOR THE ACCURACY OF THE INFORMATION THEREIN. THE UNITED STATES GOVERNMENT THEREBY INCURRED NO RESPONSIBILITY FOR THE ACCURACY OF THE INFORMATION THEREIN. THE UNITED STATES GOVERNMENT THEREBY INCURRED NO RESPONSIBILITY FOR THE ACCURACY OF THE INFORMATION THEREIN.

FED SUP CLASS

5940



DASH NO.	<del>PLATE</del> (B)	WIRE SIZE AVG NOM	STUD SIZE	A HOLE DIA		B DIA	C DIA	D	E	F	H
				MIN	MAX						±.003
24	10-2370	10	4	.115	.127	1/8	9/32	1-1/8	3/16	53/64	.032
25	10-2384		10	.193	.205		13/16	1-1/8		15/32	
26	10-2372						3/8	1-1/8		13/16	

**MATERIAL:** COPPER, ANNEALED - SPECIFICATION QQ-C-576.

**FINISH:** HOT TIN DIP OR ELECTRODEPOSITED TIN ALL OVER, MINIMUM THICKNESS .0005 INCHES.

- NOTES:**
1. ALL DIMENSIONS IN INCHES. TOLERANCES FRACTIONAL  $\pm 1/64$  UNLESS OTHERWISE SPECIFIED.
  2. REMOVE ALL BURRS.
  3. REFERENCED DOCUMENTS OF ISSUE IN EFFECT ON DATE OF INVITATION FOR BIDS SHALL APPLY.
  4. THE MS PART NUMBER CONSISTS OF THE MS NUMBER PLUS THE DASH NUMBER.

(B)

CUSTOMER'S  
ORD  
Specs  
OTHER INT  
-S10C,TC,CE  
-Wep,Dock  
AP-

**MILITARY STANDARD**  
TERMINAL, LUG, SOLDER TYPE,  
COPPER STAMPING, ONE HOLE

MS35430

PROHIBITED SPECIFICATION  
MIL-T-15639

SUPERSEDED:

ONLY 3 or 3

DD FORM 1 OCT 62 672-1

APPROVED 5 July 55 REVISED