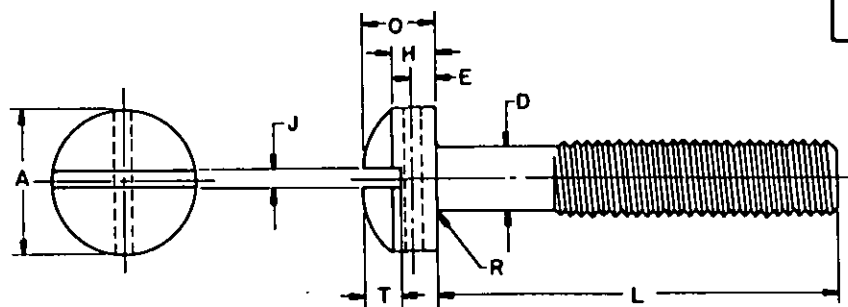


REVIEW: E, ME, EA, SA, AV, M, AT
USER: SM, CL, MA, YO, PA, WV, MC



FED. SUP CLASS
5305

TABLE I

NOMINAL SIZE		(#2) .086	(#4) .112	(#6) .138	(#8) .164	(#10) .190	(1/4) .250	(5/16) .3125	(3/8) .375
THREADS PER INCH, UNC-2A		56	40	32	32	24	20	18	16
D BODY DIAMETER	MAX	.0860	.1120	.1380	.1640	.1900	.2500	.3125	.3750
	MIN	.0717	.0925	.1141	.1399	.1586	.2127	.2712	.3287
A HEAD DIAMETER	MAX	.140	.183	.226	.270	.313	.414	.518	.622
	MIN	.124	.166	.208	.250	.292	.389	.490	.590
R HEAD SIDE HEIGHT	MAX	.062	.079	.096	.113	.130	.170	.211	.253
	MIN	.055	.072	.089	.106	.123	.161	.201	.242
O TOTAL HEAD HEIGHT	MAX	.083	.107	.132	.156	.180	.237	.295	.355
	MIN	.070	.094	.118	.141	.165	.219	.276	.333
J SLOT WIDTH	MAX	.031	.039	.048	.054	.060	.075	.084	.094
	MIN	.023	.031	.039	.045	.050	.064	.072	.081
T SLOT DEPTH	MAX	.030	.038	.045	.065	.075	.102	.130	.154
	MIN	.022	.030	.035	.054	.064	.087	.110	.134
E DRILL LOCATION	NOM	.026	.035	.043	.043	.043	.062	.078	.094
DRILLED HOLE SIZE		NOM	.031	.037	.046	.046	.046	.062	.070
R RADIUS	MAX	.013	.017	.021	.025	.029	.038	.047	.056
TENSILE STRENGTH, LB-MIN		300	480	730	1120	1400	2540	4190	6200
L LENGTH	TOLERANCE	DASH NO.	DASH NO.	DASH NO.	DASH NO.	DASH NO.	DASH NO.	DASH NO.	DASH NO.
.125	+0 -.031	201	211	224	239	258	276	292	307 308
.188		202	212	225	240				
.250		203	213	226	241				
.312		204	214	227	242				
.375		205	215	228	243	261	277	293	
.438		206	216	229	244	262	278	294	
.500		207	217	230	245	263	279	295	
.625		208	218	231	246	264	280	296	
.750	+0 -.062	209	219	232	247	265	281	296	309
.875		210	220	233	248	266	282	297	310
1.000			221	234	249	267	283	298	311
1.250			222	235	250	268	284	299	312
1.500		+0 -.094	223	236	251	269	285	300	313
1.750				237	252	270	286	301	314
2.000				238	253	271	287	302	315
2.250					254	272	288	303	316
2.500	+0 -.094		255	273	289	304	317		
2.750			256	274	290	305	318		
3.000			257	275	291	306	319		

(B) ENTIRE STANDARD REVISED

P.A. WC Other Cust AS 82	TITLE SCREW, MACHINE-DRILLED FILLISTER HEAD, SLOTTED, CORROSION RESISTING STEEL, PASSVATED, UNC-2A	MILITARY STANDARD MS35275
PROCUREMENT SPECIFICATION FF-S-92	SUPERSEDES: BCFX1.5, BCFX2.5, BCFX7.1 and in part AN500, MS35361, MS35366 and BCGX3.1	SHEET 1 OF 4

FED. SUP CLASS
5305

NOTES:

1. **MATERIAL:** Steel, Corrosion Resisting, in accordance with Fed. Std. No. 66; AISI 302, 303, 304, 305, 316, or 384 (developed for cold heading), and having minimum ultimate tensile strength of 80,000 PSI.
2. **TREATMENT:** Passivation shall be in accordance with QQ-P-35.
3. **MAGNETIC PERMEABILITY:** These fasteners have a magnetic permeability of 2.0 maximum (air = 1.0) for a field strength of H = 200 oersteds using a magnetic indicator per MIL-I-17214.
4. **THREADS:** The threads shall be in accordance with Screw-Thread Standards for Federal Services, Handbook H-28.
5. **THREAD LENGTH:** Screws 2.00 inches long and shorter shall have complete threads extending to within two threads of the head, or closer if practicable. Longer screws shall have a minimum thread length of 1.50 inches.
6. **DIMENSIONS:** All dimensions are in inches unless otherwise specified.
7. **PART NUMBER:** The MS part number consists of the MS number, plus the dash number.
Example: MS35275-201
8. Drilled hole is to be approximately at right angles to the slot and may be permitted to break through the bottom of the slot. All sharp edges shall be removed.
9. Referenced documents shall be of the issue in effect on date of invitations for bid.
10. For design feature purposes, this standard takes precedence over procurement documents referred herein.

REVIEW: EL, ME, EA, ES, AA, MA, AT
 USER: SA, CL, MA, YD, PA, WV, MC

SHEET 1.

APPROVED 9 FEB 1954 REVISED (A) 29 JUL 1965 (B) FOR CHANGES

This military standard is approved for use by all Departments and Agencies of the Department of Defense. Selection for all new engineering and design applications and for repetitive use shall be made from this document, when available.

P.A. WC	TITLE	MILITARY STANDARD
Other Cust AS 82	SCREW, MACHINE-DRILLED FILLISTER HEAD, SLOTTED, CORROSION RESISTING STEEL, PASSIVATED, UNC-2A	MS35275
PROCUREMENT SPECIFICATION FF-S-92	SUPERSEDES: BCFX1.5, BCFX2.5, BCFX7.1 and in part ANS00, MS35361, MS35366 and BCCX3.1	SHEET 2 OF 4

TABLE II
INTERCHANGEABILITY TABLE

FED. SUP CLASS
5305

The screws covered by the dash numbers given in original issue of this standard and AN500 in part, are cancelled/inactivated after the approval date of revision A indicated on this document. Use the dash numbers given in the preceding sheets. The cancelled screws cannot always replace the new screws and should be used until existing stocks are depleted. Use only the new screws for design and replacement. Replacement shall be in accordance with this table.

REVIEWER: EL, ME, EA, IS, RA, MI, AT
USER: SA, OL, ML, YO, PA, WV, MC

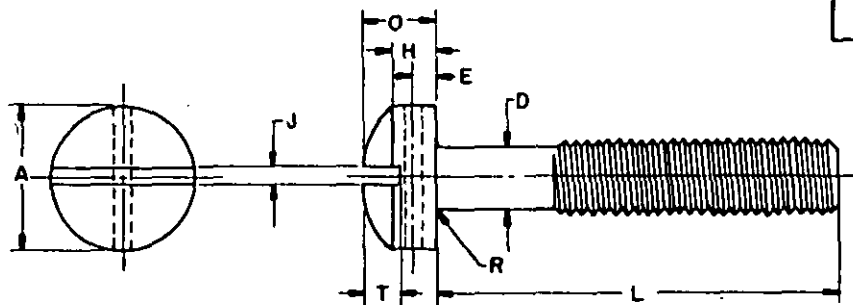
This military standard is approved for use by all Departments and Agencies of the Department of Defense. Selection for all new engineering and design applications and for repetitive use shall be made from this document, when applicable.

PART NUMBERS			PART NUMBERS		
CANCELLED		SUPERSEDED BY	CANCELLED		SUPERSEDED BY
MS35275-1	AN500-AD2-3	MS35275-201	MS35275-81	AN500-AD10-6	MS35275-261
-2	-AD2-4	-202	-62	-AD10-7	-262
-3	-AD2-5	-203	-63	-AD10-8	-263
-4	-AD2-6	-204	-64	-AD10-10	-264
-5	-AD2-7	-205	-65	-AD10-12	-265
-6	-AD2-8	-206	-66	-AD10-14	-266
-7	-AD2-10	-207	-67	-AD10-16	-267
-8	-AD2-12	-208	-68	-AD10-18	No Replacement
-9		-209		-AD10-20	-268
-10		-210		-AD10-22	No Replacement
	AD3-3 thru AD3-8	No Replacement	-69	-AD10-24	-269
-11	-AD3-10	No Replacement	-70	-AD10-28	-270
-12	-AD3-12	No Replacement	-71	-AD10-32	-271
-13		-211	-72		-272
-14	-AD4-3	-212	-73	-AD10-40	-273
-15	-AD4-4	-213	-74		-274
-16	-AD4-5	-214	-75	-AD10-48	-275
-17	-AD4-6	-215	-76		-276
-18	-AD4-7	-216	-77	-AD416-6	-277
-19	-AD4-8	-217	-78	-AD416-7	-278
-20		-218	-79	-AD416-8	-279
-21	-AD4-10	-219	-80	-AD416-10	-280
-22	-AD4-12	-220	-81	-AD416-12	-281
-23		-221	-82	-AD416-14	-282
	AD5-3 thru AD5-8	No Replacement	-83	-AD416-16	-283
-24	-AD5-10	No Replacement	-84	-AD416-18	No Replacement
-25	-AD5-12	No Replacement	-85	-AD416-20	No Replacement
-26		-222	-86	-AD416-22	-284
-27	-AD6-3	-223	-87	-AD416-24	-285
-28	-AD6-4	-224	-88	-AD416-28	-286
-29	-AD6-5	-225	-89	-AD416-32	-287
-30	-AD6-6	-226	-90		-288
-31	-AD6-7	-227	-91	-AD416-40	-289
-32	-AD6-8	-228	-92		-290
-33	-AD6-10	-229	-93	-AD416-48	-291
-34	-AD6-12	-230	-94	-AD516-6	-292
	-AD6-14	-231	-95	-AD516-7	-293
-35	-AD6-16	-232	-96	-AD516-8	-294
-36		-233	-97	-AD516-10	-295
-37	-AD6-18	-234	-98	-AD516-12	-296
-38	-AD6-20	No Replacement	-99	-AD516-14	-297
-39	-AD6-22	No Replacement	-100	-AD516-16	-298
-40	-AD6-24	-235	-101	-AD516-18	No Replacement
-41	-AD6-26	-236	-102	-AD516-20	No Replacement
-42	-AD6-28	-237	-103	-AD516-22	-300
-43	-AD6-32	-238	-104	-AD516-24	-301
-44		-239	-105	-AD516-28	-302
-45	-AD8-4	-240	-106	-AD516-32	-303
-46	-AD8-5	-241		-AD516-40	-304
-47	-AD8-6	-242	-107		-305
-48	-AD8-7	-243	-108	-AD516-48	-306
-49	-AD8-8	-244	-109	-AD616-6	No Replacement
-50	-AD8-10	-245	-110	-AD616-7	No Replacement
	-AD8-12	-246	-111	-AD616-8	-307
-51	-AD8-14	-247		-AD616-10	-308
-52	-AD8-16	-248	-112	-AD616-12	-309
-53	-AD8-18	-249	-113	-AD616-14	-310
-54	-AD8-20	No Replacement	-114	-AD616-16	-311
-55	-AD8-22	No Replacement	-115	-AD616-18	No Replacement
-56	-AD8-24	-250	-116	-AD616-20	-312
-57	-AD8-26	-251	-117	-AD616-22	No Replacement
-58	-AD8-28	-252	-118	-AD616-24	-313
-59	-AD8-32	-253	-119	-AD616-28	-314
-60		-254		-AD616-32	-315
	-AD10-4	-255			-316
	-AD10-5	-256		-AD616-40	-317
		-257		-AD616-48	-318
		-258			-319
		-259			
		-260			

APPROVED FEB 9, 1954 REVISED (A) 29 JUL 1965 (B) FOR CHANGES SEE SHEET 1.

P.A.	WC	TITLE	MILITARY STANDARD
Other Cust	AS	SCREW, MACHINE-DRILLED FILLISTER HEAD, SLOTTED,	
	82	CORROSION RESISTING STEEL, PASSIVATED, UNC-2A	MS 35275
PROCUREMENT SPECIFICATION	SUPERSEDES: BCFX1.5 BCFX2.5 BCFX7.1 and in part	SHEET 3 OF 4	
FF-S-92	AN500, MS35361, MS35366 and BCGX3.1.		

REVIEW: EL, ME, EA, ES, AN, MI, AT
 USER: SH, GL, ML, YD, PH, WV, MC



FED. SUP. CLASS
 5305

TABLE III
 METRIC TRANSLATION OF TABLE I

NOMINAL SIZE	MM	2.184	2.845	3.505	4.166	4.826	6.350	7.938	9.525
PITCH		.45	.64	.79	.79	1.06	1.27	1.41	1.59
D BODY DIAMETER	MAX MIN	2.184 1.821	2.845 2.350	3.505 2.898	4.166 3.553	4.826 4.028	6.350 5.403	7.938 6.888	9.525 8.349
A HEAD DIAMETER	MAX MIN	3.556 3.150	4.648 4.216	5.740 5.283	6.858 6.350	7.950 7.417	10.516 9.881	13.157 12.446	15.799 14.986
H HEAD SIDE HEIGHT	MAX MIN	1.575 1.397	2.007 1.829	2.438 2.261	2.870 2.692	3.302 3.124	4.318 4.089	5.359 5.105	6.426 6.147
O TOTAL HEAD HEIGHT	MAX MIN	2.108 1.778	2.718 2.388	3.353 2.997	3.962 3.581	4.572 4.191	6.020 5.563	7.493 7.010	9.017 8.458
J SLOT WIDTH	MAX MIN	.787 .584	.991 .787	1.219 .991	1.372 1.143	1.524 1.270	1.905 1.626	2.134 1.829	2.388 2.057
T SLOT DEPTH	MAX MIN	.762 .559	.965 .762	1.143 .889	1.651 1.372	1.905 1.626	2.591 2.210	3.302 2.794	3.912 3.404
E DRILL LOCATION	NOM	.660	.889	1.092	1.092	1.092	1.575	1.981	2.388
DRILLED HOLE SIZE	NOM	.787	.940	1.168	1.168	1.168	1.575	1.778	1.778
R RADIUS	MAX	.330	.432	.533	.635	.737	.965	1.194	1.422
TENSILE STRENGTH, KN-MIN		1.344	2.151	3.272	5.020	6.275	11.384	18.780	27.789
L LENGTH	TOLERANCE	DASH NO.	DASH NO.	DASH NO.	DASH NO.	DASH NO.	DASH NO.	DASH NO.	DASH NO.
3.175		201	211	224	239				
4.775		202	212	225	240	258			
6.350		203	213	226	241	259			
7.925		204	214	227	242	260	276		
9.525		205	215	228	243	261	277	292	
11.125	+0	206	216	229	244	262	278	293	
12.700	-.787	207	217	230	245	263	279	294	307
15.875		208	218	231	246	264	280	295	308
19.050		209	219	232	247	265	281	296	309
22.225		210	220	233	248	266	282	297	310
25.400			221	234	249	267	283	298	311
31.750			222	235	250	268	284	299	312
38.100	+0		223	236	251	269	285	300	313
44.450	-1.575			237	252	270	286	301	314
50.800				238	253	271	287	302	315
57.150					254	272	288	303	316
63.500	+0				255	273	289	304	317
69.850	-2.388				256	274	290	305	318
76.200					257	275	291	306	319

NOTE: All dimensions are in millimetres (mm), unless otherwise specified, and are based on an approximate conversion factor of 25.4mm equals one inch.

U.S. GOVERNMENT PRINTING OFFICE: 1976-603-766/5027

APPROVED 9 FEB 1954 REVISED (A) 29 JUL 1985 (B) FOR CHANGES SEE SHEET 1.

P.A. WC Other Cust AS 82	TITLE SCREW, MACHINE-DRILLED FILLISTER HEAD, SLOTTED, CORROSION RESISTING STEEL, PASSNATED, UNC-2A	MILITARY STANDARD MS35275
PROCUREMENT SPECIFICATION PP-S-92	SUPERSEDES: BCFX1.5, BCFX2.5, BCFX7.1 and in part AN500, MS35361, MS35366 and BCGX3.1	SHEET 4 OF 4