

INCH-POUND

MS35059K
 15 December 2005
 SUPERSEDING
 MS35059J
 15 November 1980

DETAIL SPECIFICATION SHEET

SWITCH, TOGGLE, TWO POLE, SEALED TOGGLE

INACTIVE FOR NEW DESIGN AFTER 25 FEBRUARY 1987

This specification is approved for use by all
 Departments and Agencies of the Department of Defense.

The complete requirements for acquiring the switch described herein shall consist of this specification and the latest issue of MIL-DTL-83731.

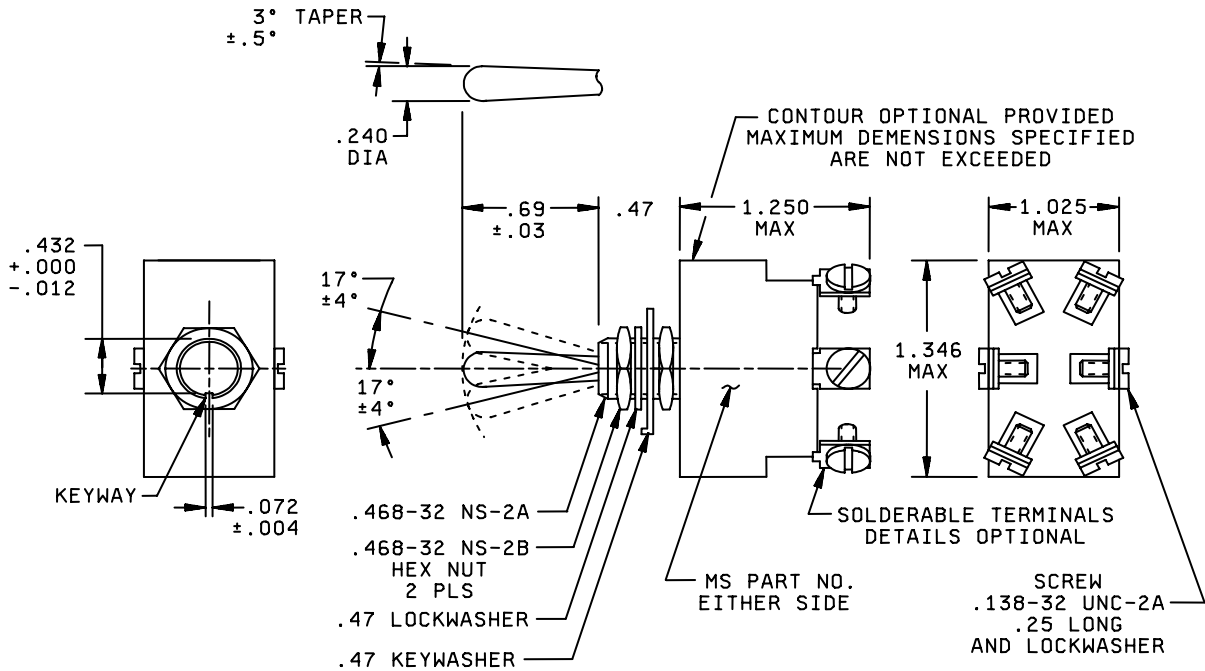


FIGURE 1 Dimensions and configurations

MS35059K

NOTES:

1. For hardware and terminals screw detail specifications see supplement of MIL-DTL-83731.
2. All dimensions are in inches.
3. Unless otherwise specified, Tolerance is $\pm .02$ on two place decimals and $\pm .005$ on three place decimals.
4. For design feature purposes, this standard takes precedence over procurement document referenced herein.

REQUIREMENTS:

All switches on this standard are designed so that the movement of the switch mechanism is opposite to that of the toggle lever.

Maximum weight is 0.10 lbs.

Electrical Endurance: 10,000 cycles.

Mechanical Endurance: 20,000 cycles.

MS part number: See table I.

Referenced documents shall be of the issue in effect on the date of invitation for bid.

Electrical Rating: See table II.

Table I: MS part numbers

MS Part No.	Former Ms Part No.		Former AN Part No.	Former Jan Type Designation
	Screw-Lug Terminal	Solder-Lug Terminal ^{1/}		
MS35059-21	MS35059-5	-	AN3027-1	ST50 P
	-	MS35059-16	-	ST52 P
MS35059-22	-	-	AN3027-2	ST50 K
	-	MS35059-9	-	ST52 K
MS35059-23	MS35059-4	-	AN3027-3	ST52 N
	-	MS35059-15	-	ST52N
MS35059-24	MS35059-1	-	AN3027-9	-
	-	MS35059-12	-	-
MS35059-25	MS35059-3	-	AN3027-10	-
	-	MS35059-14	-	-
MS35059-26	MS35059-6	-	AN3027-6	ST50R
	-	MS35059-17	-	ST52R
MS35059-27	MS35059-7	-	AN3027-7	ST50S
	-	MS35059-18	-	ST52S
MS35059-28	MS35059-2	-	AN3027-11	-
	-	MS35059-13	-	-
MS35059-29	-	-	AN3027-4	ST50L
	-	MS35059-10	-	ST52L
MS35059-30	-	-	AN3027-5	ST50M
	-	MS35059-11	-	ST52M
MS35059-31	MS35059-8	-	AN3027-8	ST50T
	-	MS35059-19	---	ST52T

^{1/} These MS part numbers are superseded by MS part number MS35059-21 thru MS35059-31 inclusive as applicable. By removing the screws and lockwashers from applicable part, a switch with solder lug terminals is formed.

MS35059K

TABLE II: Detail Requirements

MS Part No.	Circuit with toggle lever in			Current Capacity (amperes per pole)													
				Direct Current						Alternating Current 400 Hertz			Alternating current 60 Hertz				
	Keying side	Center	Opposite keying side	Lamp-load circuit	Resistive circuit			Inductive circuit			Lamp load circuit	Resistive circuit	Inductive circuit	Resistive circuit	Inductive circuit	Lamp load circuit	
28 volts				28 Volts	125 Volts	250 Volts	28 Volts	125 Volts	250 Volts	115 Volts	115 Volts	115 volts	115 volts	220 volts	115 Volts	115 Volts	
MS35059-21	On	Off	On	7	20	----	---	15	-----	----	4	20	15	20	-----	---	----
MS35059-22	Off	None	On														
MS35059-23	On	None	On														
MS35059-24	None	Off	On														
MS35059-25	None	Mom-Off	On	5	18	-----	--	10	-----	----	2	11	8	11	-----	----	-----
MS35059-26	Mom-On	None	On														
MS35059-27	Mom-On	Off	Mom-On														
MS35059-28	Mom-on	Off	None														
MS35059-29	Mom-Off	None	On														
MS35059-30	Mom-on	None	Off														
MS35059-31	Mom-on	Off	On														

MS35059K

Referenced documents

MIL-DTL-83731

Marginal notations are not used in this revision to identify changes with respect to the previous issue due to the extent of the changes.

Custodians:

Army – CR
Navy – AS
Air Force –11
DLA - CC

Preparing activity:

DLA - CC

Project (5930-2005-021)

Review activities:

Army – AV, MI
Navy – EC
Air Force – 99

NOTE: The activities listed above were interested in this document as of the date of this document. Since organizations and responsibilities can change, you should verify the currency of the information above using the ASSIST Online database at <http://assist.daps.dla.mil/>.