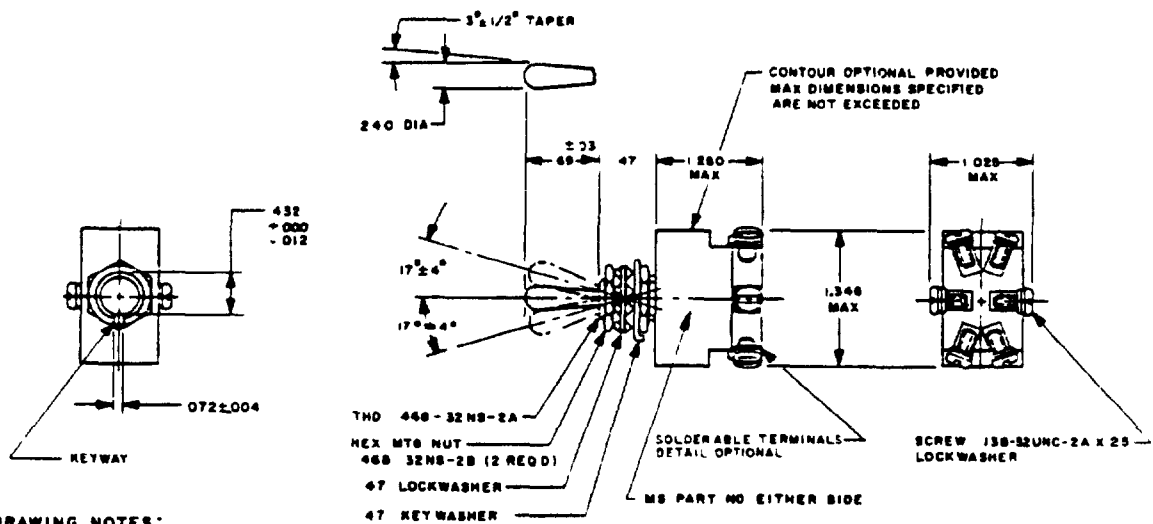


FED SUP CLASS
5930

Reviewer AF 11, AV, EC, ES



DRAWING NOTES

- 1 FOR HARDWARE AND TERMINALS SCREW DETAIL SPECIFICATIONS SEE SUPPLEMENT OF MIL-S-83731
- 2 ALL DIMENSIONS ARE IN INCHES.
- 3 UNLESS OTHERWISE SPECIFIED TOLERANCE IS $\pm .02$ ON TWO PLACE DECIMALS AND $\pm .005$ ON THREE PLACE DECIMALS.

INACTIVE FOR DESIGN AFTER 16 SEP 1969
USE MS24524 OR MS 25307

PA AF 85

International
Interest

TITLE

SWITCH, TOGGLE, TWO POLE,
SEALED TOGGLE

MILITARY STANDARD

MS 35059

Procurement Specification
MIL-S-83731

SUPERSEDES

PAGE 1 OF 2

DD FORM 672

(Coordinated) PREVIOUS EDITIONS OF THIS FORM ARE OBSOLETE

5930-1146-6

This military standard is approved for use by all Departments and Agencies of the Department of Defense. Selection for all new engineering and design applications and for repetitive use shall be made from this document when applicable.

APPROVED 24 JULY 1951 REVISED J 15 NOV 80

This military standard is approved for use by all Departments and Agencies of the Department of Defense. Selection for all new engineering and design applications and for repetitive use shall be made from this document when applicable.

Reviewer AF 11, AV, EC, ES

DETAIL REQUIREMENTS										FED SUP CLASS 5930				
MS Part No	Circuit with toggle lever in			Current capacity (amperes per pole)				Alternating current 60 HERTZ						
	Keying side	Center	Opposite keying side	Lamp-load circuit	Direct current		Inductive circuit	Alternating current 400 HERTZ		Resistive circuit	Inductive circuit	Lamp load circuit		
					28 volts	125 volts		250 volts	28 volts				125 volts	250 volts
MS35059-21	ON	OFF	ON	28	125	250	28	125	250	115	115	220	115	115
MS35059-22	OFF	NONE	ON	7	20	---	15	---	---	4	20	15	---	---
MS35059-23	ON	NONE	ON											
MS35059-24	NONE	OFF	ON											
MS35059-25	NONE	MOM-OFF	ON											
MS35059-26	MOM-ON	NONE	ON											
MS35059-27	MOM-ON	OFF	MOM-ON											
MS35059-28	MOM-ON	OFF	NONE	5	18	---	10	---	---	2	11	8	---	---
MS35059-29	MOM-OFF	NONE	ON											
MS35059-30	MOM-ON	NONE	OFF											
MS35059-31	MOM-ON	OFF	ON											

1/ These MS part numbers are superseded by MS part numbers MS35059-21 thru MS35059-31 inclusive as applicable. By removing the screws and lockwashers from applicable part, a switch with solder lug terminals is formed.

NOTES

- 1 All switches on this standard are designed so that the movement of the switch mechanism is opposite to that of the toggle lever.
- 2 Maximum weight is 0.10 pounds.
- 3 Endurance Electrical 10,000 cycles Mechanical 20,000 cycles
- 4 Referenced documents shall be of the issue in effect on the date of invitation for bid
- 5 For design feature purposes, this standard takes precedence over procurement document referenced herein

MS DASH NO	SCREW LUG TERMINAL	SOLDER LUG TERMINAL	FORMER MS PART NO	FORMER JAN TYPE DESIGNATION
21	MS35059-3	MS35059-16	AM3027-1	S150P
22	MS35059-4	MS35059-9	AM3027-2	S150P
23	MS35059-1	MS35059-15	AM3027-3	S150P
24	MS35059-1	MS35059-12	AM3027-6	S150P
25	MS35059-3	MS35059-14	AM3027-10	S150P
26	MS35059-6	MS35059-17	AM3027-6	S150P
27	MS35059-7	MS35059-18	AM3027-7	S150P
28	MS35059-2	MS35059-13	AM3027-11	S150P
29	---	MS35059-10	AM3027-4	S150P
30	---	MS35059-11	AM3027-5	S150P
31	MS35059-8	MS35059-19	AM3027-8	S150P

APPROVED 24 JULY 1951 REVISED J See page 1

PA AF 85

Other Cust
ARMY-ER
NAVY-AS

Procurement Specification
MIL-S-83731

International
Interest

TITLE

SWITCH, TOGGLE, TWO POLE,
SEALED TOGGLE

SUPERSEDES

MILITARY STANDARD

MS 35059

PAGE 2

DD FORM 1 MAY 53 672

(Coordinated) PREVIOUS EDITIONS OF THIS FORM ARE OBSOLETE