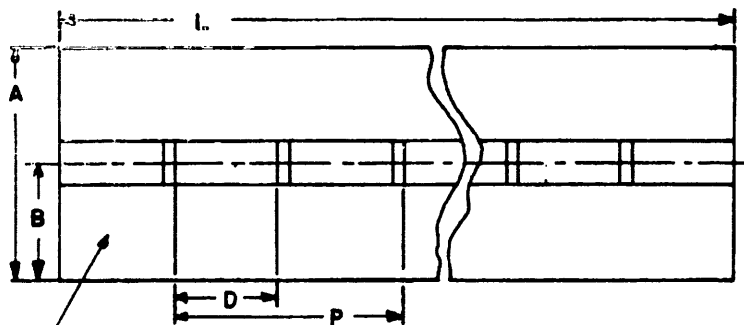


User activities:  
ARMY - ME  
NAVY - MC



IMPRESS PART NUMBER AT A MAXIMUM OF 5 INCH INTERVALS

DASH NO.	WIDTH		STOCK LENGTH L ±.03	KNUCKLE LENGTH * D	PITCH ** P	KNUCKLE DIA F	PIN DIA G
	A REF	B ±.031					
11	2.000	1.000	84.00 SEE REQT. 6	1.998 <sup>+.000</sup> -.015	4.000 <sup>+.015</sup> -.003	.192 <sup>+.007</sup> -.001	.187 ± .002
12	2.500	1.250					
13	3.000	1.500					
14	3.500	1.750					
15	4.000	2.000					
16	2.000	1.000	84.00 SEE REQT. 6	1.998 <sup>+.000</sup> -.015	4.000 <sup>+.015</sup> -.003	.255 <sup>+.007</sup> -.001	.250 ± .002
17	2.500	1.250					
18	3.000	1.500					
19	3.500	1.750					
20	4.000	2.000					

REQUIREMENTS:

- Material:**
  - A. Aluminum - Leaf - per QQ-A-250/8, Temper H24 or H34 Half Hard.
  - Aluminum - Pin - per QQ-A-225/7.
  - B. Brass - Leaf per QQ-B-613, Alloy 268, Temper, Half Hard.
  - Copper - Pin - per QQ-W-321, Alloy 260, Temper, Half Hard.
  - C. Corrosion Resisting Steel - Leaf - per QQ-S-766, Class 301,302 or 304, Condition A, Temper Annealed.
  - Corrosion Resisting Steel - Pin per QQ-W-423.
  - D. Carbon Steel - Leaf - per ASTM A109-72, Cold rolled, Temper No. 4.
  - Carbon Steel - Pin - per QQ-W-461, Composition 1010, 1020.
  - E. Carbon Steel - Leaf - per ASTM A109-72, Cold rolled, Temper No. 4.
  - Copper - Pin - per QQ-W-321, Alloy 260, Temper, Half Hard.
- Finish:** Materials A, B, C, and D shall be plain (uncoated).  
Materials D when specified, shall be zinc coated in accordance with QQ-2-325, Type II, Class 2 or cadmium plated in accordance with QQ-P-416, Type II, Class 1.  
Materials E shall be cadmium plated in accordance with QQ-P-416, Type II, Class 1.
- Part Number:** The MS part number consists of the MS Number plus the dash number followed by the applicable letter for material from Requirement 1.  
Example: MS35829-11A or MS35829-14D.  
When protective finish is required for materials "D", add "F" to the dash number.  
Example: MS35829-14 DF.
- \*4. End knuckles shall be a minimum 1/2 of knuckle.
- \*\*5. Cumulative tolerance on pitch is ± .015 in any 36 inch segment.
6. Hinges shall be stocked and issued in lengths of 84.00 inches. Application may be of any length within the above length.

NOTES:

- Dimensions:** All dimensions are in inches unless otherwise specified.
- Referenced documents shall be of the issue in effect on date of invitations for bids, or request for proposal, except that referenced adopted industry documents shall give the date of the issue adopted.
- For design feature purposes, this standard takes precedence over procurement documents referenced herein.

(E) ENTIRE STANDARD REVISED

This military standard is approved for use by all Departments and Agencies of the Department of Defense. Selection for all new engineering and design applications and for repetitive use shall be made from this document, when applicable.

Review activities:  
ARMY - MI, AI, EK, EA  
DIA-IS  
NSA-NS

P.A. AR Other Cust AS 99	TITLE <b>HINGE, BUTT, CONTINUOUS (PIANO) .075 THICKNESS, .187 &amp; .250 PIN DIA</b>	<b>MILITARY STANDARD MS35829</b>
PROCUREMENT SPECIFICATION MIL-H-9850	SUPERSEDES:	PAGE 1 OF 2

FED. SUP CLASS  
5340

USER ACTIVITIES:

ARMY - ME  
NAVY - MC

REVIEWER ACTIVITIES:

ARMY - MI, AT, ER, EA  
DLA-1S  
NSA-NS

This military standard is approved for use by all Departments and Agencies of the Department of Defense. Selection for all new engineering and design applications and for repetitive use shall be made from this document, when applicable.

INTERCHANGEABILITY TABLE

Dash numbers 1 thru 10 are cancelled and new dash numbers assigned for "L" DIM. (84.00) are as follows:

MS35829 DASH NUMBERS	
NEW	CANCELLED
11	1
12	2
13	3
14	4
15	5
16	6
17	7
18	8
19	9
20	10

APPROVED 24 JUNE 1957 REVISED (E) FOR CHANGES SEE PAGES 1 AND 2

P. A. AR Other Cust AS 99	INTERNATIONAL INTEREST	TITLE HINGE, BUTT, CONTINUOUS (PIANO) .075 THICKNESS, .187 & .250 PIN DIA	MILITARY STANDARD
			MS35829
PROCUREMENT SPECIFICATION MIL-H-9850	SUPERSEDES:	PAGE 2	OF 2