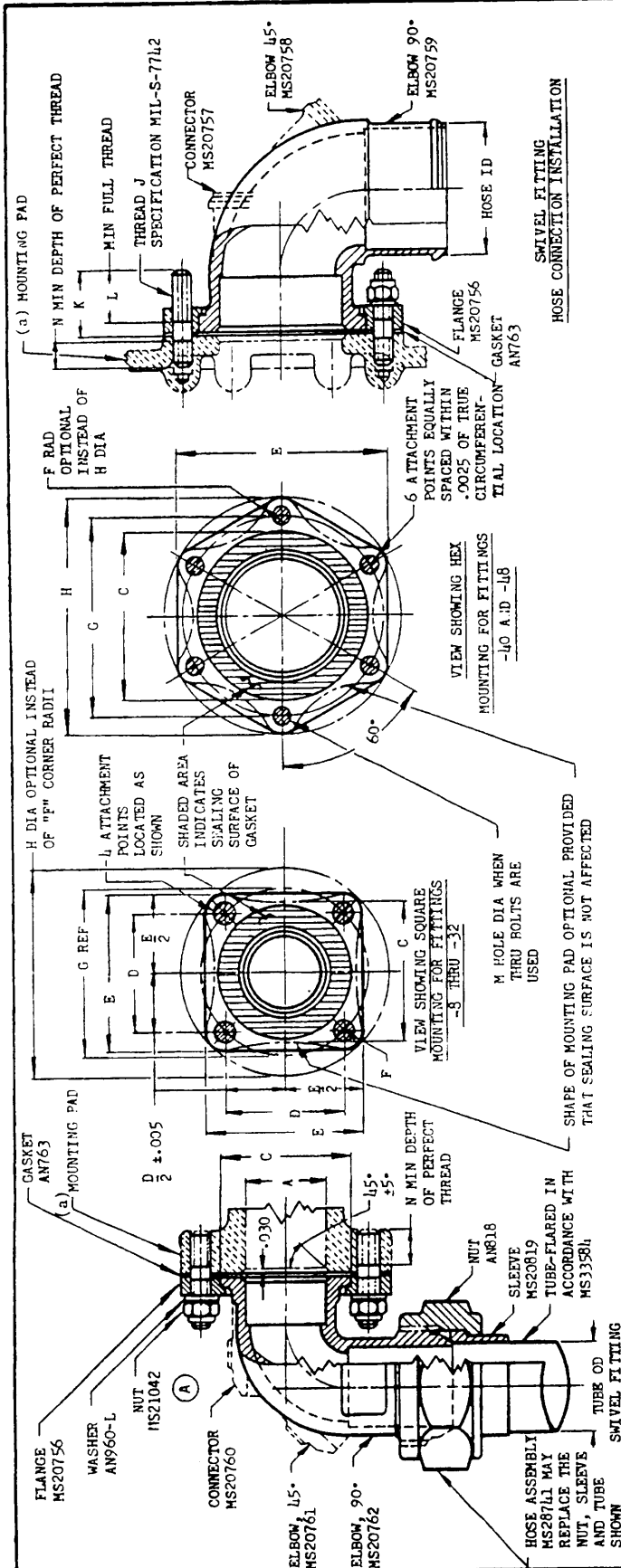


FED. SUP CLASS
L730

User activities: ARMY - ME

Review activities: DLA- CS

This military standard is approved by the Department of Defense and is mandatory on all activities. Selection for all new engineering and design applications and for repetitive use shall be made from this document.



INSTALLATION DIMENSIONS

DASH NO. REF	NOMINAL TUBE AND HOSE SIZE REF	A	C	D	E	F	G	H	J	K	L	M	(c) N	(b) WRENCH TORQUE INCH LBS.
-8	.500	.383	.875	.950	1.390		1.344	1.782		±.020				
-10	.625	.469	1.000	1.038	1.468		1.468	1.906			.500	.205	.281	40
-12	.750	.609	1.250	1.156	1.594	±.016	1.635	2.094	NO. 10-32 NF-3A					
-12-16	1.000	.844	1.500	1.312	1.750		1.855	2.312	1/4-28 UNF-3A					
-20	1.250	1.078	1.844	1.656	2.188		2.342	2.875	5/16-24 UNF-3A					
-20-24	1.500	1.312	2.125	1.812	2.375	±.020	2.562	3.094			.562	.266	.375	100
-24	2.000	1.781	2.750	2.375	3.000		3.312	3.953			.625	.266	.375	100
-32	2.500	2.281	3.281	2.812	4.000		3.375	4.500			.688	.328	.469	225
-40	3.000	2.781	3.781		4.500		4.625	5.000			.688	.328	.469	225

(a) DETAIL DESIGN AND CONSTRUCTION OF SWIVEL FITTING MOUNTING PAD OPTIONAL EXCEPT THAT GASKET SEALING SURFACE, AS NOTED, MUST BE FINISHED SMOOTH WITH A SURFACE ROUGHNESS NOT TO EXCEED 150 MICROINCHES RMR.

(b) TABULATED TORQUE VALUES INDICATE LIMITS FOR PROPER SEALING OF FITTING TO PAD.

(c) FOR STUDS AND CAP SCREWS ONLY.

(d) THREAD J APPLIES TO EXTERNAL PORTION OF STUDS AND INTERNAL TAPPED THREAD FOR CAP SCREWS.

CONNECTORS HAVE FLIES OR INTEGRAL MOUNTING FLANGES BUT ALL FITTINGS PROVIDED FOR A GIVEN TUBE OR HOSE SIZE ARE FULLY INTERCHANGEABLE IN MOUNTING DIMENSIONS.

MAX OPERATING PRESSURES: THRU 1 IN. - 1,500 PSI, 1-1/4 THRU 3 IN. - 500 PSI, ABOVE 3 IN. - 200 PSI.

MOUNTING WITH STUDS, STANDARD THRU-ROLS WITH SELF-LOCKING NUTS OR CAP SCREWS WITH HEADS LOCKWIRED AND THREADED INTO HELICAL COIL OR THREADED INSERTS FOR SOFT METALS.

DIMENSIONS IN INCHES. UNLESS OTHERWISE SPECIFIED, TOLERANCES: DECIMALS ±.005.

THIS IS A DESIGN STANDARD. NOT TO BE USED AS A PART NUMBER.

P.A. AIR FORCE-82 (A) TITLE FITTING INSTALLATION, FLARED TUBE AND HOSE, SWIVEL.

Other Cust: NAVY- AS, USAF- 99

PROCUREMENT SPECIFICATION NONE SUPERSEDES: AND10086

MILITARY STANDARD
MS 33786

SHEET 1 OF 2

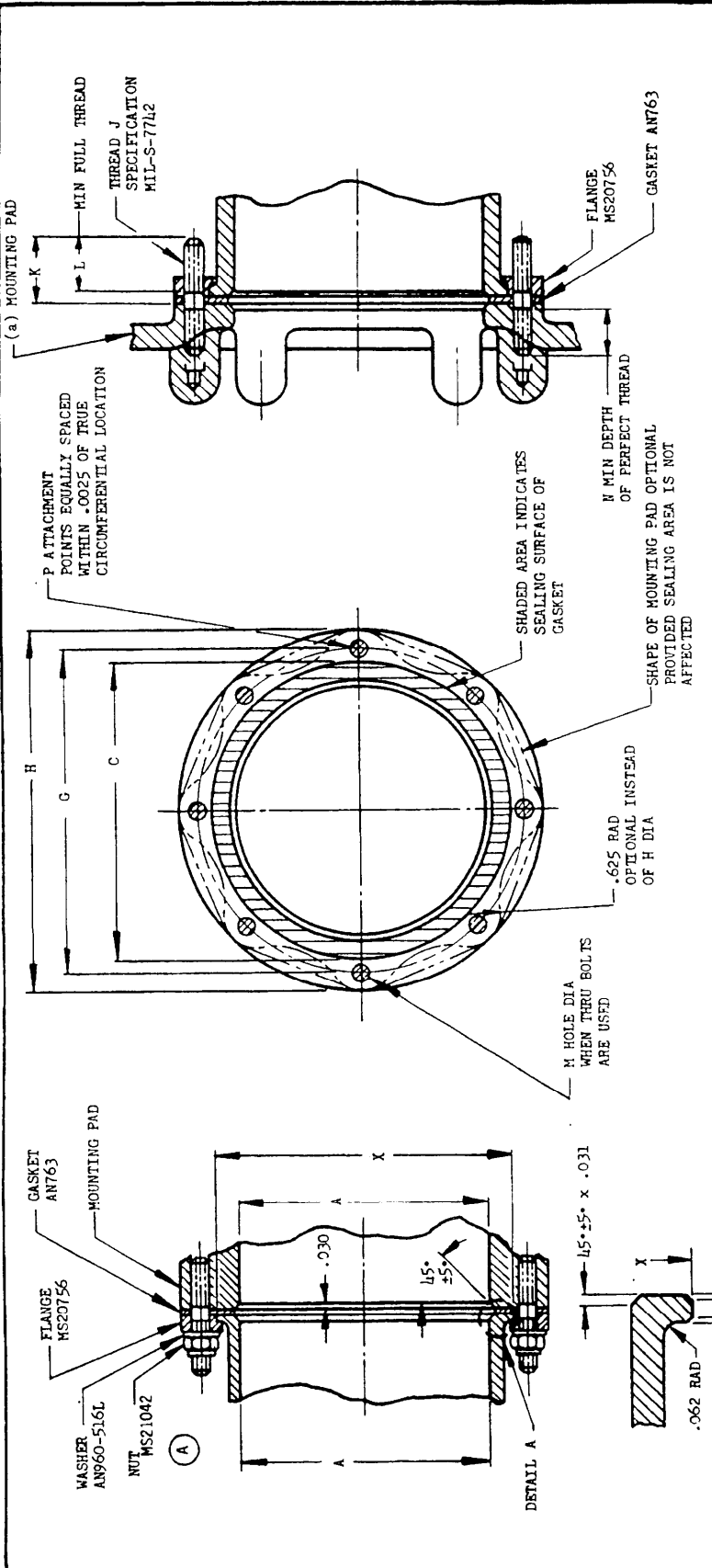
APPROVED 1 Apr 59 REVISED (A) 1 FEB 85

FED. SUP CLASS

User activities: ARMY - ME

Review activities: DLA-CS

This military standard is approved by the Department of Defense and is mandatory on all activities. Selection for all new engineering and design applications and for repetitive use shall be made from this document.



REFERENCE DOCUMENTS SHALL BE OF THE ISSUE IN EFFECT ON DATE OF INVITATIONS FOR BIDS OR REQUEST FOR PROPOSAL, EXCEPT THAT REFERENCED ADOPTED INDUSTRY DOCUMENTS SHALL GIVE THE DATE OF THE ISSUE ADOPTED. FOR DESIGN FEATURE PURPOSES, THIS STANDARD TAKES PRECEDENCE OVER PROCUREMENT DOCUMENTS REFERENCED HEREIN.

DASH NO. REF	NOMINAL TUBE AND HOSE SIZE (REF)	A DIA	C DIA	G DIA	H MIN DIA	THREAD J (d) UNF-3A	K ±.020	L	M POLT HOLE ±.010 - .000	N	P		X	Y	(b) WRENCH TORQUE INCH LBS.		
											8	10				12	14
56	3.500	3.281	4.281	4.875	5.562	5/16-24	.812	.688	.328	.169	4.214	4.777	5.777	6.777	7.810	.188	225
64	4.000	3.781	4.781	5.438	6.125	5/16-24	.812	.688	.328	.169	4.214	4.777	5.777	6.777	7.810	.188	225
80	5.000	4.781	5.781	6.438	7.125	5/16-24	.812	.688	.328	.169	4.214	4.777	5.777	6.777	7.810	.188	225
96	6.000	5.781	6.781	7.438	8.125	5/16-24	.812	.688	.328	.169	4.214	4.777	5.777	6.777	7.810	.188	225
112	7.000	6.781	7.781	8.500	9.188	5/16-24	.812	.688	.328	.169	4.214	4.777	5.777	6.777	7.810	.188	225

DIMENSIONS IN INCHES. UNLESS OTHERWISE SPECIFIED, TOLERANCES: DECIMALS ±.005, ANGLES ±1/2°.

SEE SHEET 1 FOR NOTES.

P.A. AIR FORCE - 82 Other Cust AIR FORCE - 99 NAVY - AS	TITLE FITTING INSTALLATION, FLARED TUBE AND HOSE, SWIVEL.	MILITARY STANDARD MS 33786
PROCUREMENT SPECIFICATION NONE	SUPERSEDES: AND 10086	SHEET 2 OF 2