

INCH-POUND

MS33695A

9 July 2004

SUPERSEDING

MS33695

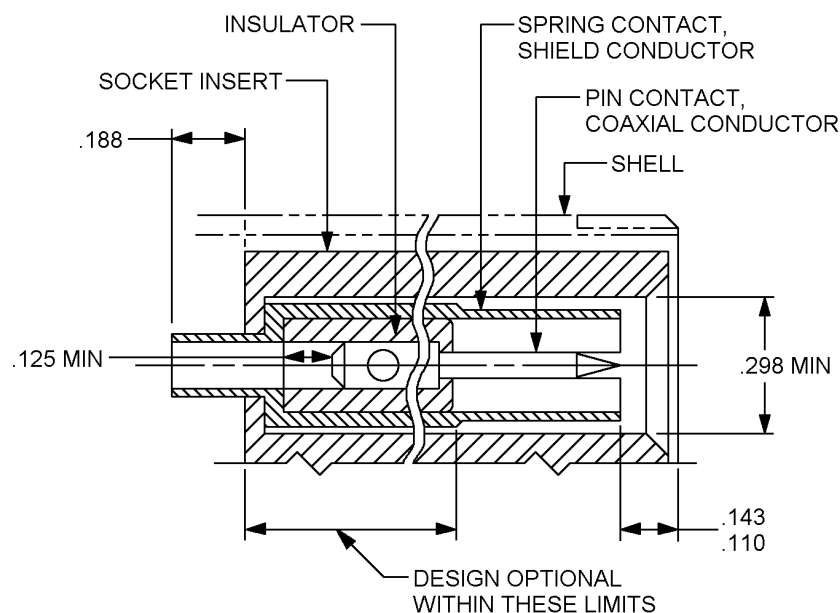
17 December 1958

DETAIL SPECIFICATION SHEET

CONTACTS, VIDEO COAXIAL CONNECTOR

This specification is approved for use by all Departments
and Agencies of the Department of Defense.

The requirements for acquiring the product described herein
shall consist of this specification sheet.



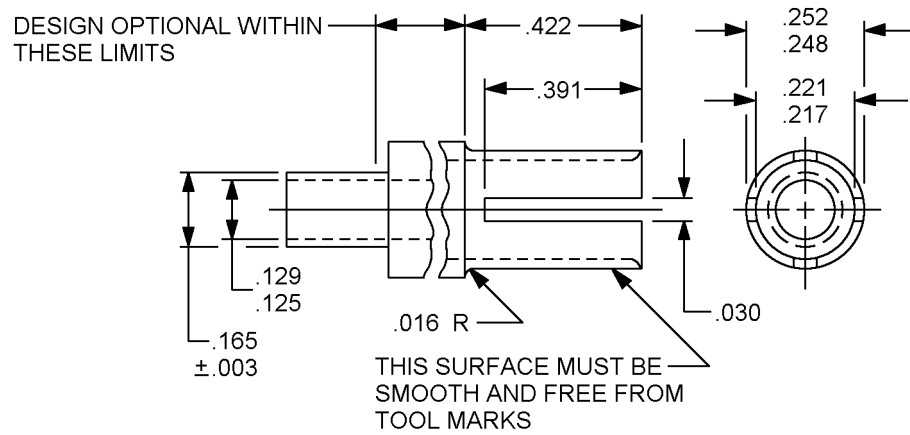
NOTES:

1. Dimensions are in inches.
2. Unless otherwise specified, tolerance shall be $\pm .016$ (.406 mm).

Inches	mm
.110	2.794
.125	3.175
.143	3.632
.188	4.775
.298	7.570

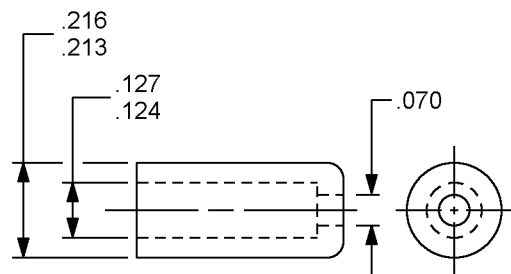
FIGURE 1. Pin contact assembly, coaxial connector.

MS33695A



Inches	mm	Inches	mm
.003	.076	.217	5.512
.016	.406	.221	5.613
.030	.762	.248	6.300
.125	3.175	.252	6.401
.129	3.276	.391	9.931
.165	3.276	.422	10.720

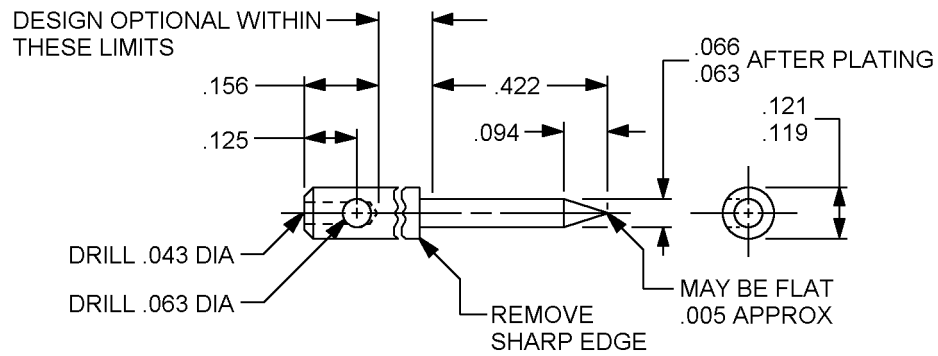
FIGURE 2. Spring contact, shield conductor.



Inches	mm
.070	1.778
.124	3.149
.127	3.226
.213	5.410
.216	5.486

FIGURE 3. Insulator.

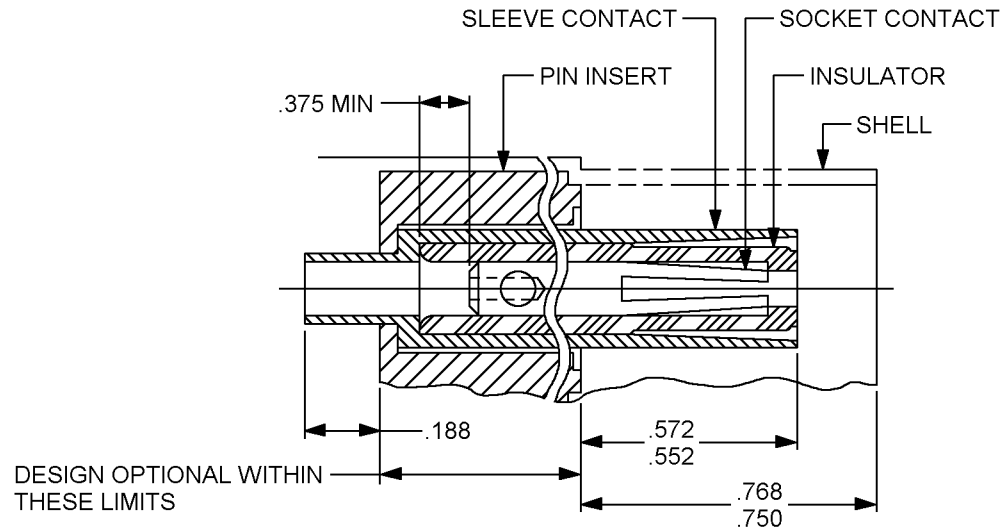
MS33695A



Inches	mm	Inches	mm
.005	.127	.121	3.073
.043	1.092	.125	3.175
.063	1.600	.156	3.962
.066	1.676	.422	10.718
.094	2.387		
.119	3.022		

FIGURE 4. Pin contact, coaxial conductor.

MS33695A



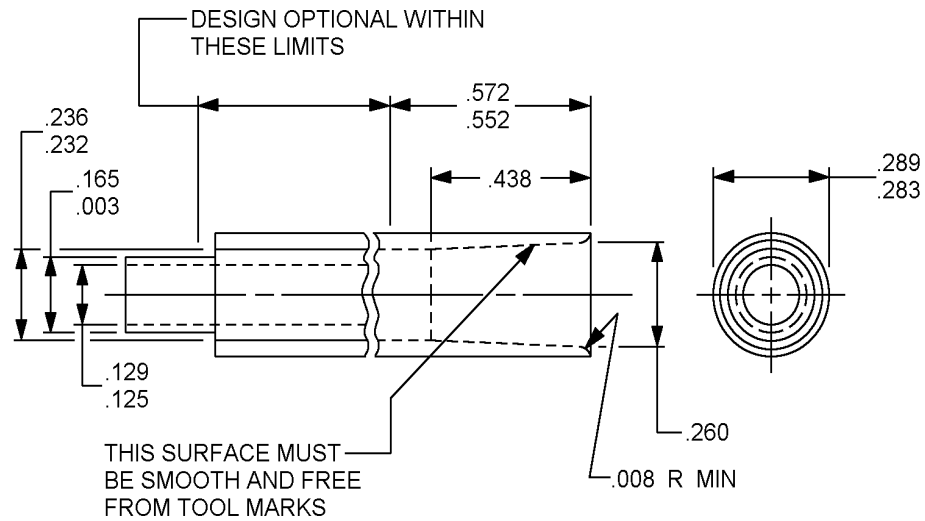
Inches	mm
.188	4.775
.375	14.300
.552	14.020
.572	14.528
.750	19.050
.768	19.507

NOTES:

1. Dimensions are in inches.
2. Unless otherwise specified, tolerance shall be ± 0.016 .

FIGURE 5. Socket contact assembly, coaxial connector.

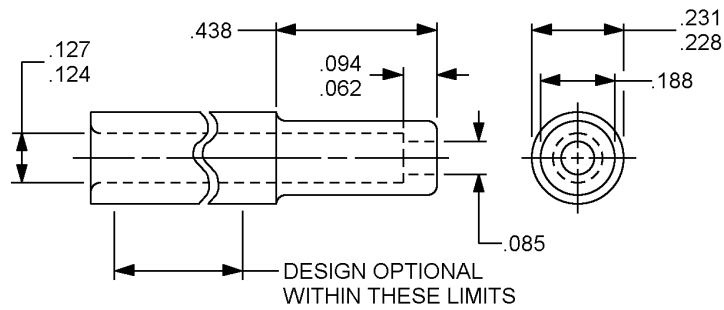
MS33695A



Inches	mm	Inches	mm
.003	.076	.260	6.604
.008	.203	.283	7.188
.125	3.175	.289	7.340
.129	3.276	.438	11.125
.165	4.191	.552	14.020
.232	5.893	.572	14.528
.236	5.994		

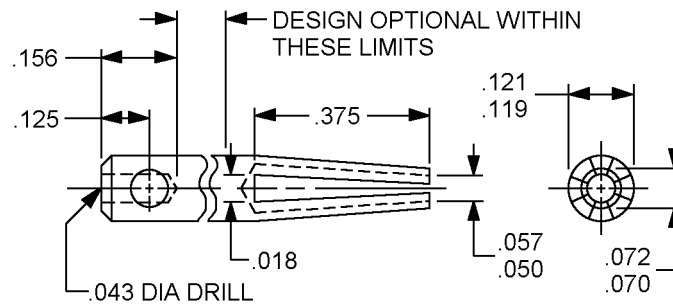
FIGURE 6. Socket, sleeve contact, shield conductor.

MS33695A



Inches	mm	Inches	mm
.062	1.575	.188	4.775
.085	2.159	.228	5.791
.094	2.387	.231	5.867
.124	3.149	.438	11.125
.127	3.226		

FIGURE 7. Socket, insulator.



Inches	mm	Inches	mm
.018	.457	.119	3.022
.043	1.092	.121	3.073
.050	1.270	.125	3.175
.057	1.448	.156	3.962
.070	1.778	.375	9.525
.072	1.828		

FIGURE 8. Socket contact, coaxial conductor.

MS33695A

Requirements:

Design and construction: See figures 1 through 8.

Material:

- a. Pin contact and sleeve contact: Brass, ½ hard, composition 22, in accordance with ASTM B121, ASTM B36, ASTM B16, ASTM B16M and ASTM B124.
- b. Spring contact and socket contact: In accordance with ASTM B139.
- c. Insulator: Styramic HT, G.E. 1421 copolymer or DOW Q-200.5 copolymer.

Finish: Metal parts, gold plate, .0002 inches (.0051 mm).

Changes from previous issue. Marginal notations are not used in this revision to identify changes with respect to the previous issue due to the extent of the changes.

Reference documents. This document references the following:

ASTM B16
ASTM B16M
ASTM B36
ASTM B121
ASTM B124
ASTM B139

CONCLUDING MATERIAL

Custodians:
Army - CR
Navy - AS
Air Force - 11
DLA - CC

Preparing activity:
DLA - CC

(Project 5935-4419-026)

NOTE: The activities listed above were interested in this document as of the date of this document. Since organizations and responsibilities can change, you should verify the currency of the information above using the ASSIST Online database at <http://www.dodssp.daps.mil>.