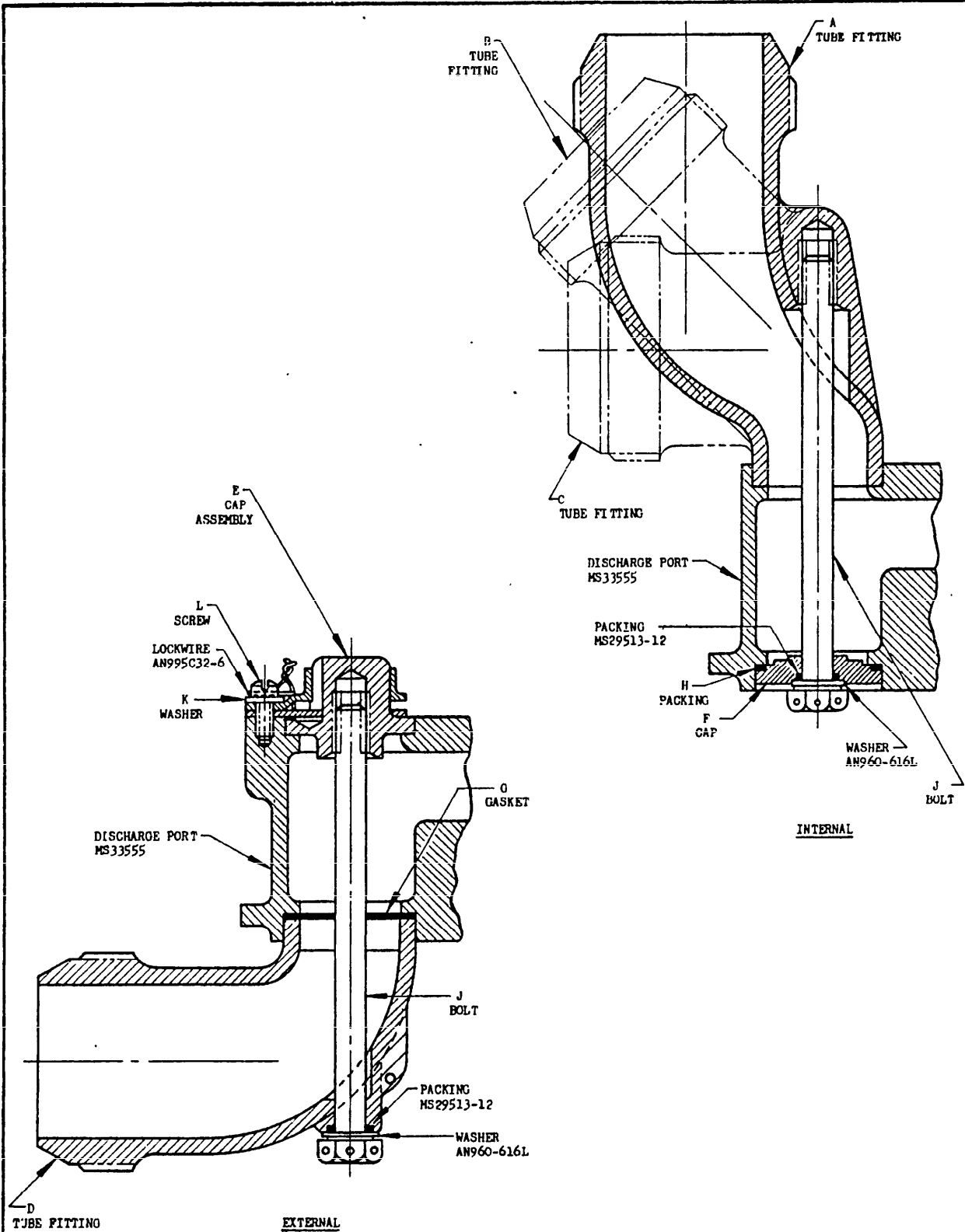


NOTICE: When Government drawings, specifications, or other data are used for any purpose other than in connection with a definitely related Government procurement operation, the United States Government thereby incurs no responsibility, nor any obligation whatsoever; and the fact that the Government may have formulated, furnished, or in any way supplied the said drawings, specifications, or other data is not to be regarded by implication or otherwise as in any manner licensing the holder or any other person or corporation, or conveying any rights or permission to manufacture, use, or sell any patented invention that may in any way be related thereto.



THIS IS A DESIGN STANDARD. NOT USED AS A PART NUMBER.

CUSTODIANS Navy - BuAer Air Force	OTHER INT. A - N - AF -	MILITARY STANDARD		MS33551 (ASG)
		FITTING INSTALLATION, FLARED TUBE, EXTERNAL AND INTERNAL DISCHARGE PORTS, BOOSTER PUMP		
PROCUREMENT SPECIFICATION NONE	SUPERSEDES:	SHEET 1 OF 2		

NOTICE: When Government drawings, specifications, or other data are used for any purpose other than in connection with a definitely related Government procurement operation, the United States Government thereby incurs no responsibility, nor any obligation whatsoever; and the fact that the Government may have formulated, furnished, or in any way supplied the said drawings, specifications, or other data is not to be regarded by implication or otherwise as in any manner licensing the holder or any other person or corporation, or conveying any rights or permission to manufacture, use, or sell any patented invention that may in any way be related thereto.

DISCHARGE PORT DIA REF	TUBING OD REF	FITTINGS				E CAP ASSEMBLY	F CAP	G OASKET
		A	B	C	D			
(a) .750	.375 500							
1.500	1	MS29541-2-16	MS29540-2-16	MS29539-2-16	MS29538-2-16	MS29535-2	MS29534-2	MS29537-2
1.500	1-1/4	MS29541-2-20	MS29540-2-20	MS29539-2-20	MS29538-2-20	MS29535-2	MS29534-2	MS29537-2
1.500	1-1/2	MS29541-2-24	MS29540-2-24	MS29539-2-24	MS29538-2-24	MS29535-2	MS29534-2	MS29537-2
1.500	2	MS29541-2-32	MS29540-2-32	MS29539-2-32	MS29538-2-32	MS29535-2	MS29534-2	MS29537-2
1.875	1-1/2	MS29541-3-24	MS29540-3-24	MS29539-3-24	MS29538-3-24	MS29535-3	MS29534-3	MS29537-3
1.875	2	MS29541-3-32	MS29540-3-32	MS29539-3-32	MS29538-3-32	MS29535-3	MS29534-3	MS29537-3
2.250	2-1/2		MS29540-4-40	MS29539-4-40	MS29538-4-40	MS29535-4	MS29534-4	MS29537-4
2.250	3		MS29540-4-48	MS29539-4-48	MS29538-4-48	MS29535-4	MS29534-4	MS29537-4

DISCHARGE PORT DIA REF	TUBING OD REF	H PACKING	J BOLT FITTINGS				K WASHER	L SCREW
			A	B	C	D		
			(a) .750	.375 500				
1.500	1	MS29513-28	AN76A40	AN76A41	AN76A40	AN76A31	AN960D10	AN500-10-7
1.500	1-1/4	MS29513-28	AN76A41	AN76A43	AN76A43	AN76A44	AN960D10	AN500-10-7
1.500	1-1/2	MS29513-28	AN76A42	AN76A46	AN76A52	AN76A47	AN960D10	AN500-10-7
1.500	2	MS29513-28	AN76A44	AN76A54	AN76A50	AN76A41	AN960D10	AN500-10-7
1.875	1-1/2	MS29513-131	AN76A42	AN76A46	AN76A46	AN76A47	AN960D10	AN500-10-7
1.875	2	MS29513-131	AN76A44	AN76A54	AN76A50	AN76A41	AN960D10	AN500-10-7
2.250	2-1/2	MS29513-137		AN76A56	AN76A53	AN76A43	AN960D10	AN500-10-7
2.250	3	MS29513-137		AN176H64A	AN76A55	AN76A46	AN960D10	AN500-10-7

(a) NO MS STANDARD DRAWINGS FOR THIS PORT SIZE. FOR C AND D STYLE FITTING INSTALLATIONS IN THIS PORT SIZE SEE USAF DRAWING NO. 50B9394.

FOR A, B, C, AND D FITTINGS:
 EXAMPLE OF PART NO.: MS.....-2-16 = FITTING FOR 1.500 DIA DISCHARGE PORT AND 1.000 TUBING OD FITTING END.

THIS IS A DESIGN STANDARD NOT USED AS A PART NUMBER.

CUSTODIANS Navy - BuAer Air Force	OTHER INT. A - N - AF -	<h1>MILITARY STANDARD</h1>		MS33551 (ASG)
		FITTING INSTALLATION, FLARED TUBE, EXTERNAL AND INTERNAL DISCHARGE PORTS, BOOSTER PUMP		
PROCUREMENT SPECIFICATION NONE		SUPERSEDES:		SHEET 2 OF 2

APPROVED 22 Jun 54. REVISED