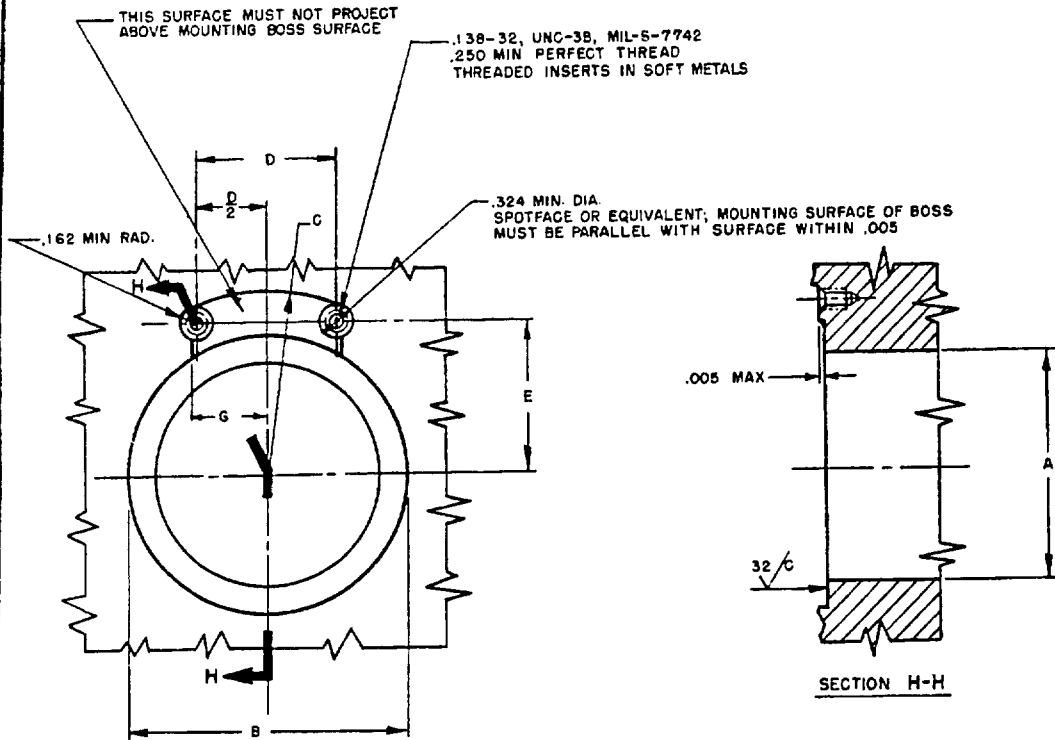


FED. SUP CLASS
2915



Review activities:
Army - AV
Navy - AS
Air Force - 1L, 82

This military standard is approved by the Department of Defense and is mandatory on all activities. Selection for all new engineering and design applications and for repetitive use shall be made from this document.

SIZE	A ±.005 DIA	B MIN DIA	C MIN RAD	D ±.005	D 2 ±.0025	E ±.005	G MIN
12	.561	.963	.777	.860	.4300	.440	.447
16	.792	1.213	.926	1.110	.5550	.525	.572
20	1.024	1.557	1.107	1.248	.6740	.710	.641
24	1.248	1.807	1.210	1.240	.6200	.825	.637
28	1.483	2.120	1.360			1.025	
32	1.719	2.397	1.461	1.382	.6910	1.100	.708
40	2.203	2.839	1.819	1.406	.7030	1.500	.720
48	2.703	3.339	2.056	1.656	.8280	1.703	.845
56	3.213	4.026	2.405	2.093	1.0470	1.984	1.064
64	3.711	4.526	2.677	2.313	1.1560	2.234	1.173

(C) SURFACE TEXTURE IN ACCORDANCE WITH USAS 846.1-1962.

DIMENSIONS IN INCHES.

FOR DESIGN FEATURE PURPOSES, THIS STANDARD TAKES PRECEDENCE OVER PROCUREMENT DOCUMENTS REFERENCED HEREIN. REFERENCED DOCUMENTS SHALL BE OF THE ISSUE IN EFFECT ON DATE OF INVITATIONS FOR BID.

THIS IS A DESIGN STANDARD. NOT TO BE USED AS A PART NUMBER.

APPROVED 31 Dec 52 REVISED (A) 4 Sep 62 (B) 3 Aug 64 (C) 1 Mar 76

P.A. Air Force - 1L Other Cust Army - AV Navy - AS	(C)	TITLE	MILITARY STANDARD
		MOUNTING PAD - SWING CHECK VALVE ELEMENT, FUEL	MS33535
PROCUREMENT SPECIFICATION NONE		SUPERSEDES:	SHEET 1 OF 1