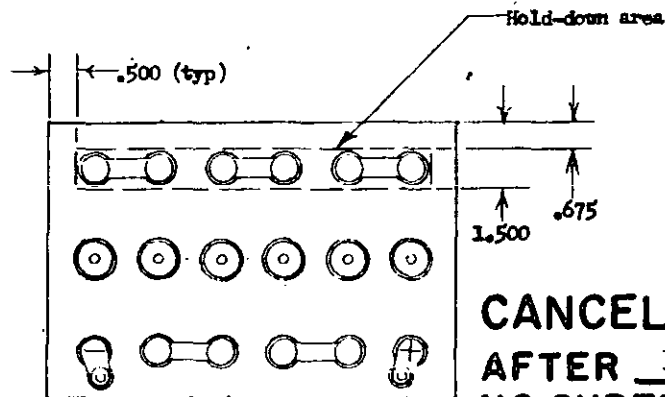
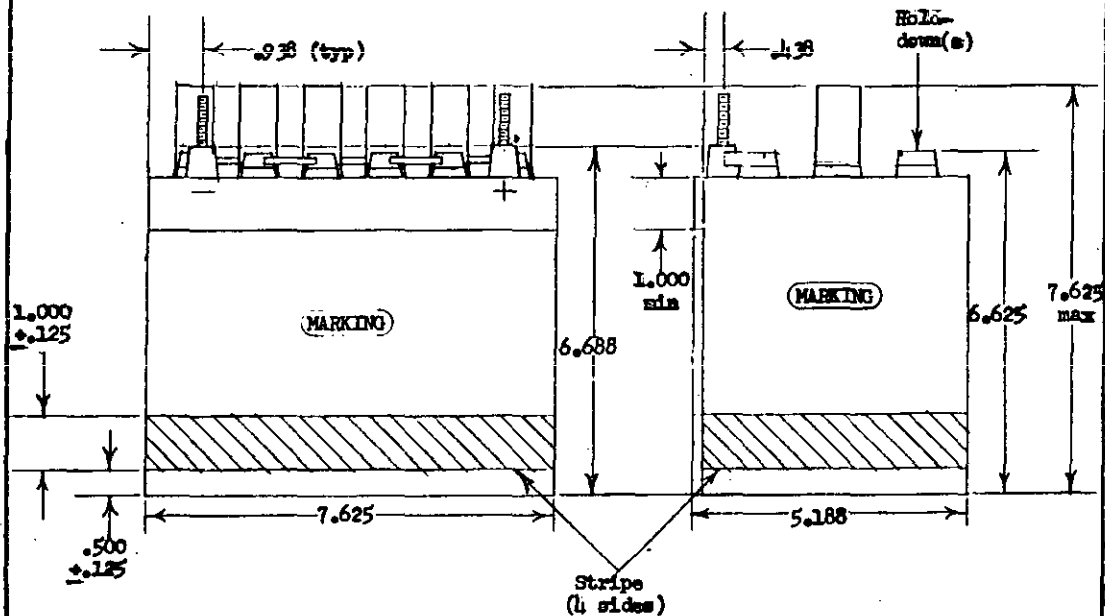


FED. SUP CLASS
6140

CANCELLED
AFTER 1 August 1975
NO SUPERSEDING STD



MS Part Number	Duty	Dis-charge Rate	Nomi-nal Potent-ial, Volts	Nomi-nal Capa-city, Amperes-Hours	Max. Wt., Lbs.	Color of Stripe
MS 3189-1*	Medium	-	12.00	14	25	-
-2	Heavy	Low	12.63	14	28	Black
-3	"	Low	11.37	14	22	Yellow
-4	"	High	12.63	13	25	Red
-5	"	High	11.37	13	22	Green
-6	"	Low	24.00	14	48	Consists of one MS 3189-2 and one MS 3189-3.
-7	"	High	24.00	13	48	

* INACTIVE PART NUMBER. Part number MS 3189-1 is inactive for design - no new aircraft shall be designed to use this battery, nor shall any existing aircraft be modified to use it.

This standard has been approved by the Naval Air Systems Command, Department of the Navy, and is mandatory for use by that activity. All other military activities are required to employ this standard where suitable.

P.A. Navy - AS Other Cust	TITLE BATTERIES, STORAGE, AIRCRAFT, TWO-PART, THREADED-POST-CONNECTED, SHALL	MILITARY STANDARD MS 3189(AS)
Procurement Specification MIL-B-8565	SUPERSEDES:	SHEET 1 OF 2

APPROVED 16 Jun 69 REVISED (A) 1 Aug 1975

NOTES.

FED. SUP CLASS

6140

1. DIMENSIONS. The dimensions of each battery shall be as shown on sheet 1. All dimensions are in inches. All tolerances are ± 0.030 unless otherwise specified.
2. MS PART NUMBERS. The MS part numbers of the batteries shall be as listed on sheet 1.
3. NOMINAL POTENTIAL. The nominal potential of each battery shall be as listed on sheet 1.
4. DESIGN. The design shown is typical and is shown for information only. The design, including number and arrangement of cells and manner of intercell connection, is optional.
5. ELECTRIC CONNECTIONS. Each battery shall include as its electric connections two 5/16-inch diameter threaded posts as shown on sheet 1.
6. VENT CAPS. Vent caps of medium duty batteries shall conform to MS25185.
7. HOLD-DOWNS. Each battery shall include one or more devices by which the battery may be held down. The hold-down(s) shall be in the hold-down area shown on sheet 1, and shall conform to the hold-down height shown on sheet 1. Other things in the hold-down area shall not exceed the hold-down height. Cell terminal posts or screws, intercell connectors, covers, and other devices except vent caps may be used as hold-downs. Vent caps shall not be used as hold-downs for the battery.
8. NOMINAL CAPACITY. The nominal capacity of each battery shall be as listed on sheet 1.
9. LIFTING DEVICES. Each battery shall include one or more devices by which the battery may be lifted by the hand(s) only, without the use of any tool. The battery shall be made so that it can be lifted with the hand(s) and the lifting device(s) being contained within the plan dimensions for the battery shown on sheet 1. Cell and battery terminal posts, intercell connectors, and other devices except vent caps may be used as lifting devices. Vent caps shall not be used as lifting devices.
10. STRIPE. Each heavy duty battery shall include a stripe as shown on sheet 1, finished in the color listed on sheet 1.
11. WEIGHT. The weight of each battery filled with electrolyte shall not exceed the value listed on sheet 1 in any state of charge.
12. SPECIFICATION. The batteries shall conform to requirements of MIL-B-8565 for maintainable, threaded-post-connected batteries modified as follows:

GENERAL. Replace "design standard", wherever it occurs, with "procurement standard".

4.6.1 MOUNTING. Replace the text with: "When the battery must be mounted, it shall be placed in a suitable box which supports the bottom of the battery, fits the battery snugly on all four sides, and has a height equal to the maximum height permitted for the battery by the standard for the battery. The box shall include a cover which shall include two hold-down hooks, and which shall be clamped onto the box by two suitable vertical straight rods engaging the hold-down hooks on the cover of the battery and tightened by wingnuts with flat washers under them. The cover shall include a block of rigid non-conductive material on its underside which shall clamp the battery in the box by bearing on the hold-down area shown on the standard for the battery at the hold-down height shown on the standard for the battery. The box, cover (except the hold-down block), rods, nuts, and washers shall all be made entirely of electrically conductive material. The negative electric connection of the battery shall be connected to the box externally."

Project Number 6140-N239

P.A. Navy - AS Other Cust	TITLE BATTERIES, STORAGE, AIRCRAFT, TWO-PART, THREADED-POST-CONNECTED, SMALL	MILITARY STANDARD
		MS 3457(AS)
Procurement Specification MIL-B-8565	SUPERSEDES: ★ U. S. GOVERNMENT PRINTING OFFICE: 1969-393-064-5-1183	SHEET 2 OF 2

APPROVED 16 Jun 69 REVISED (A) FOR CHANGES SEE SHT 1

This standard has been approved by the Naval Air Systems Command, Department of the Navy, and is mandatory for use by their activities. All other military activities are required to supply this standard where suitable.