

INCH-POUND

MS3481A
 1 March 2007
 SUPERSEDING
 MS3481 (NAVY)
 21 January 1970

DETAIL SPECIFICATION SHEET

TOOL, CONNECTOR ASSEMBLY, FOR MIL-DTL-26482 CONNECTORS

Reactivated after 1 March 2007 and may be used
 for new and existing designs and acquisitions.

This specification is approved for use by all Departments and
 Agencies of the Department of Defense.

The requirements for acquiring the product described herein
 shall consist of this specification sheet and MIL-DTL-26482.

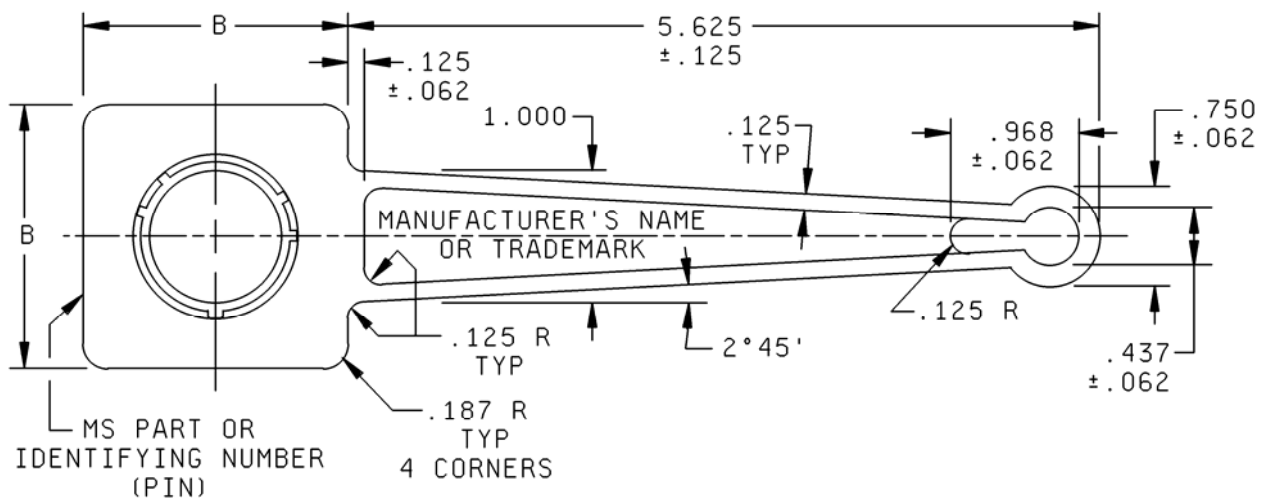


FIGURE 1. Tool, dimensions and configurations.

MS3481A

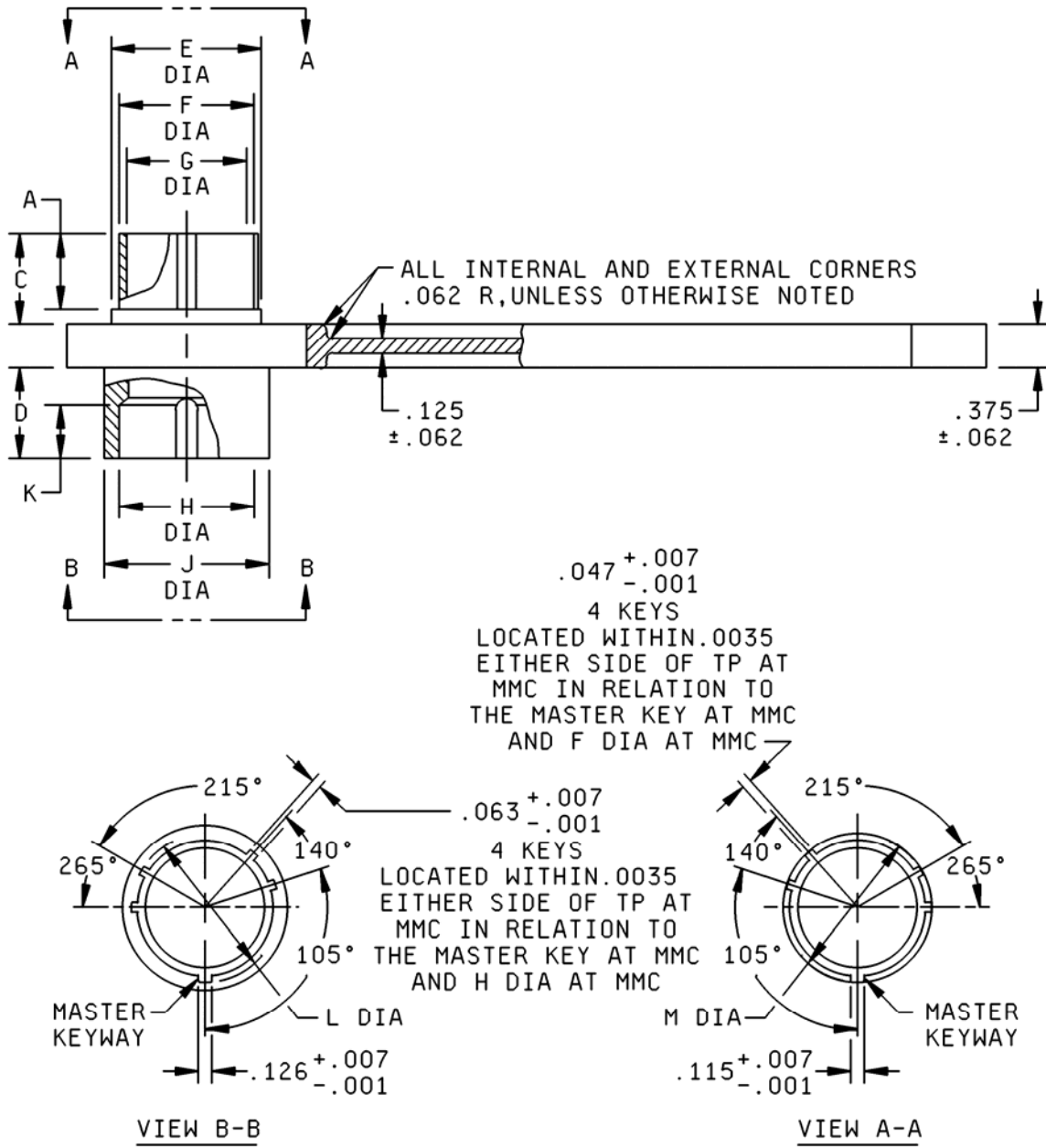


FIGURE 1. Tool, dimensions and configurations - Continued.

MS3481A

Dash number	Shell size	A $\pm .030$	B $\pm .060$	C approx	D approx	E dia approx	F dia + .001 - .005
-08	8	.380 (.015)	1.250 (.049)	.410 (.016)	.455 (.018)	.473 (.019)	.357 (.014)
-10	10					.590 (.023)	.485 (.019)
-12	12					.750 (.030)	.597 (.024)
-14	14					.875 (.034)	.722 (.028)
-16	16					1.000 (.039)	.847 (.033)
-18	18					1.125 (.044)	.947 (.037)
-20	20	.425 (.017)	2.000 (.079)	.495 (.019)	.540 (.021)	1.250 (.049)	1.072 (.042)
-22	22					1.375 (.054)	1.197 (.047)
-24	24					1.500 (.059)	1.322 (.052)

Shell size	G dia min	H dia + .005 - .001	J dia + .001 - .005	K min	L dia + .005 - .006	M dia + .001 - .010
8	.292 (.011)	.362 (.014)	.473 (.019)	.281 (.011)	.412 (.016)	.402 (.016)
10	.409 (.016)	.490 (.019)	.590 (.023)		.540 (.021)	.530 (.021)
12	.523 (.021)	.607 (.024)	.750 (.030)		.689 (.027)	.679 (.027)
14	.648 (.026)	.732 (.029)	.875 (.034)		.814 (.032)	.804 (.032)
16	.772 (.030)	.857 (.034)	1.000 (.039)		.939 (.037)	.929 (.037)
18	.862 (.034)	.962 (.038)	1.125 (.044)		1.039 (.041)	1.029 (.041)
20	.987 (.039)	1.087 (.043)	1.250 (.049)	.343 (.014)	1.164 (.046)	1.154 (.045)
22	1.111 (.044)	1.212 (.048)	1.375 (.054)		1.289 (.051)	1.279 (.050)
24	1.237 (.049)	1.337 (.053)	1.500 (.059)		1.414 (.056)	1.404 (.055)

NOTES:

1. Dimensions are in inches. Metric equivalents are given for information only.
2. Unless otherwise specified, tolerances shall be $\pm .016$ for decimals. Angular tolerances are TP.

FIGURE 1. Tool, dimensions and configurations - Continued.

MS3481A

REQUIREMENTS:

Dimensions and configuration: See figure 1.

These tools are for use with connectors in accordance with MIL-DTL-26482.

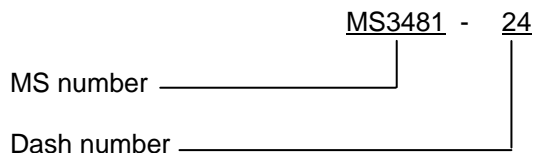
Shell material: High grade aluminum alloy.

Handle material: Die cast aluminum alloy in accordance with ASTM-B85.

Finish: Nickel plate in accordance with SAE-AMS-QQ-N-290.

All burrs and sharp edges shall be removed.

PIN example:



Changes from previous issue. Marginal notations are not used in this revision to identify changes with respect to the previous issue due to the extent of the changes.

Referenced documents. In addition to MIL-DTL-26482, this document references the following:

ASTM-B85
SAE-AMS-QQ-N-290

CONCLUDING MATERIAL

Custodians:
Army - CR
Navy - AS
DLA - CC

Preparing activity:
DLA - CC
(Project 5935-4656-019)

Review activities:
Army - GL
Navy - EC

NOTE: The activities listed above were interested in this document as of the date of this document. Since organizations and responsibilities can change, you should verify the currency of the information above using the ASSIST Online database at <http://assist.daps.dla.mil>.