

INCH-POUND

MS3475E

1 March 2007

SUPERSEDING

MS3475D

12 July 1985

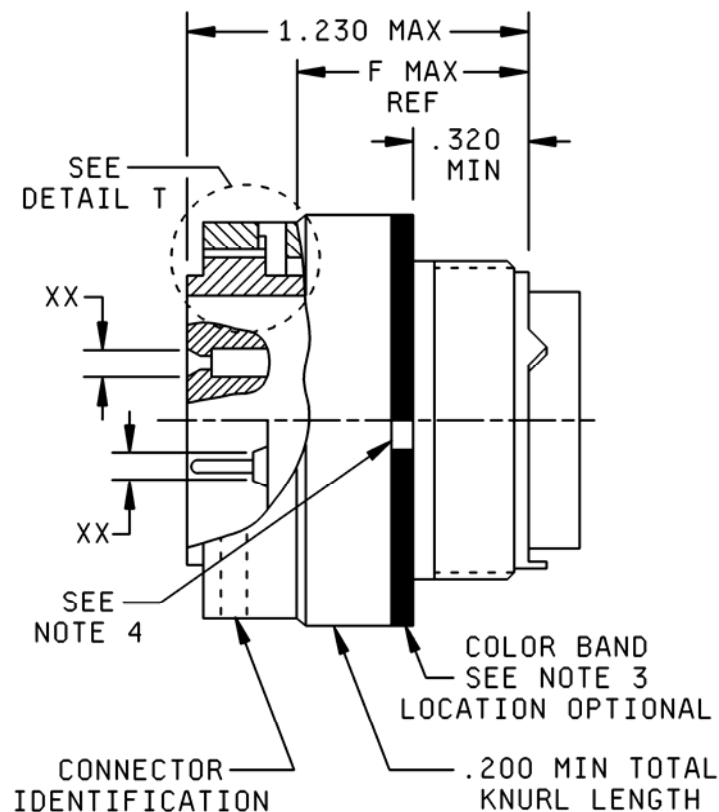
## DETAIL SPECIFICATION SHEET

CONNECTORS, PLUG, ELECTRICAL, RFI SHIELDED, SERIES II,  
CRIMP TYPE, BAYONET COUPLING, CLASSES L AND W

Reactivated after 1 March 2007 and may be used  
for new and existing designs and acquisitions.

This specification is approved for use by all Departments and  
Agencies of the Department of Defense.

The requirements for acquiring the product described herein  
shall consist of this specification sheet and MIL-DTL-26482.



NOTE: For "XX", see note 4 and table I for contact cavities requiring reduced dimensions.

FIGURE 1. Plug, classes A and L dimensions.

MS3475E

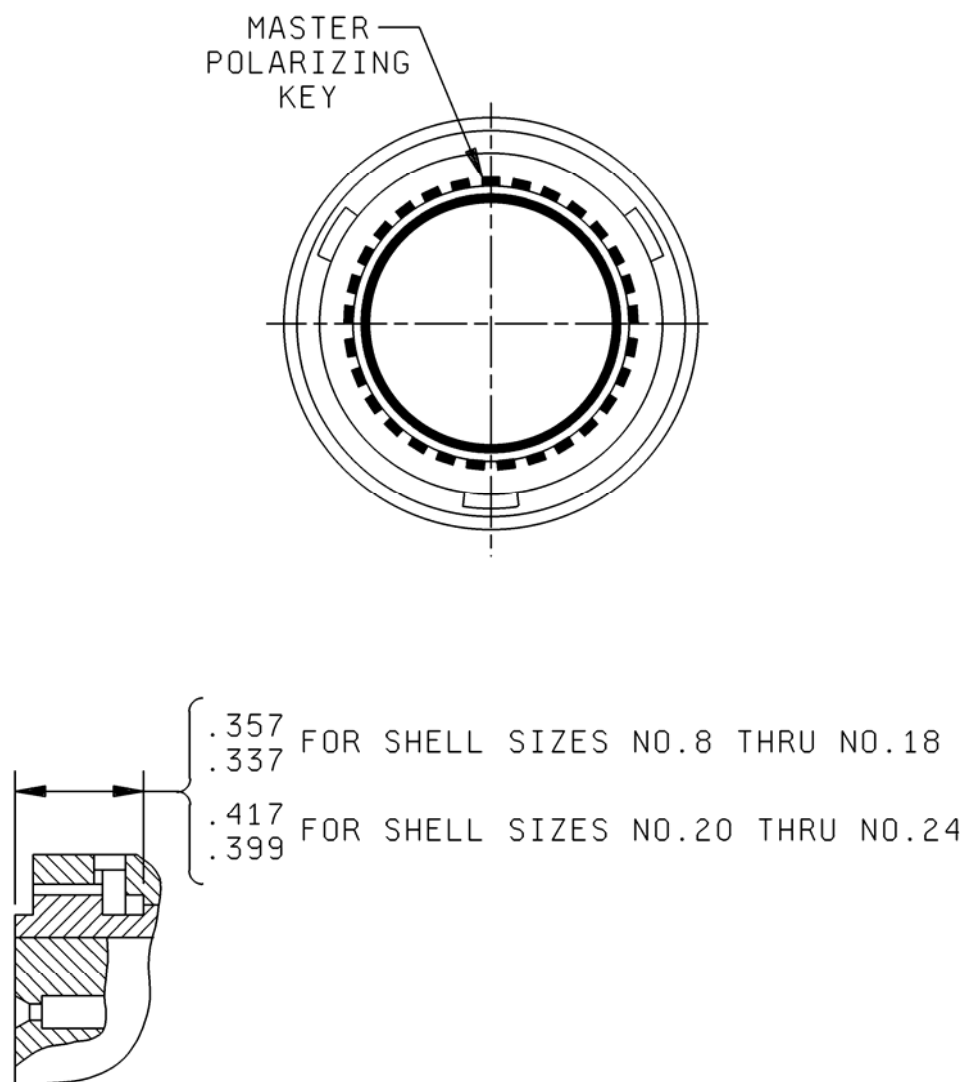


FIGURE 1. Plug, classes A and L dimensions - Continued.

MS3475E

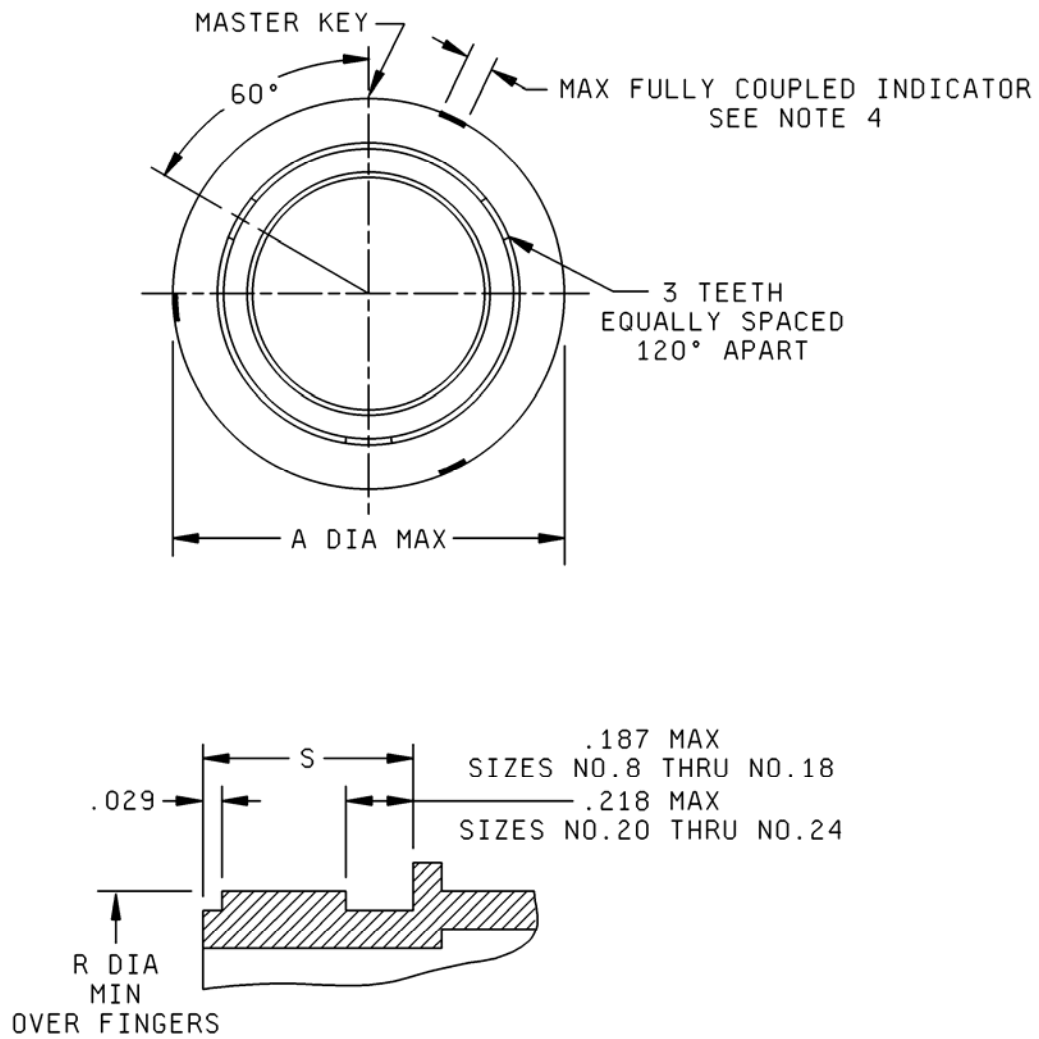


FIGURE 1. Plug, classes A and L dimensions - Continued.

MS3475E

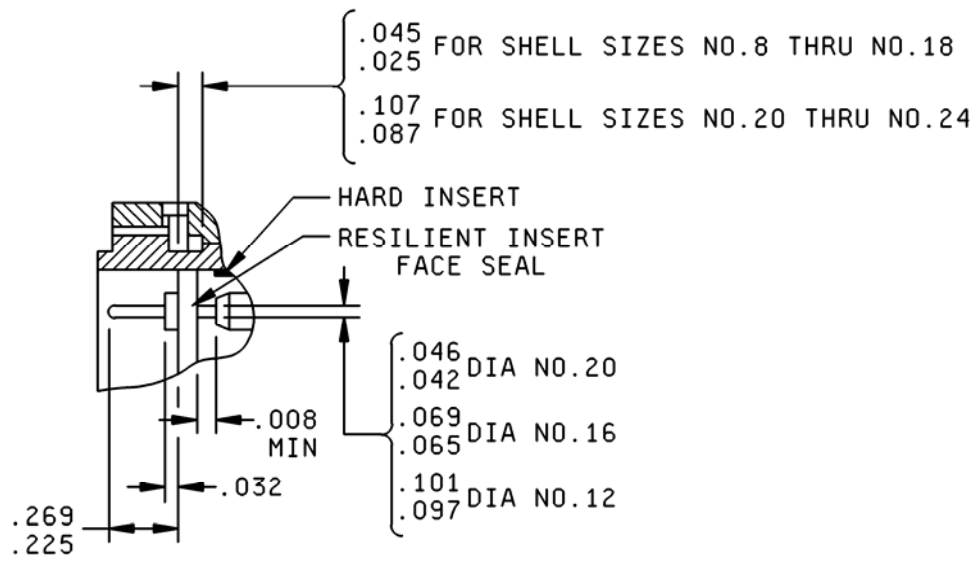


FIGURE 1. Plug, classes A and L dimensions - Continued.

# MS3475E

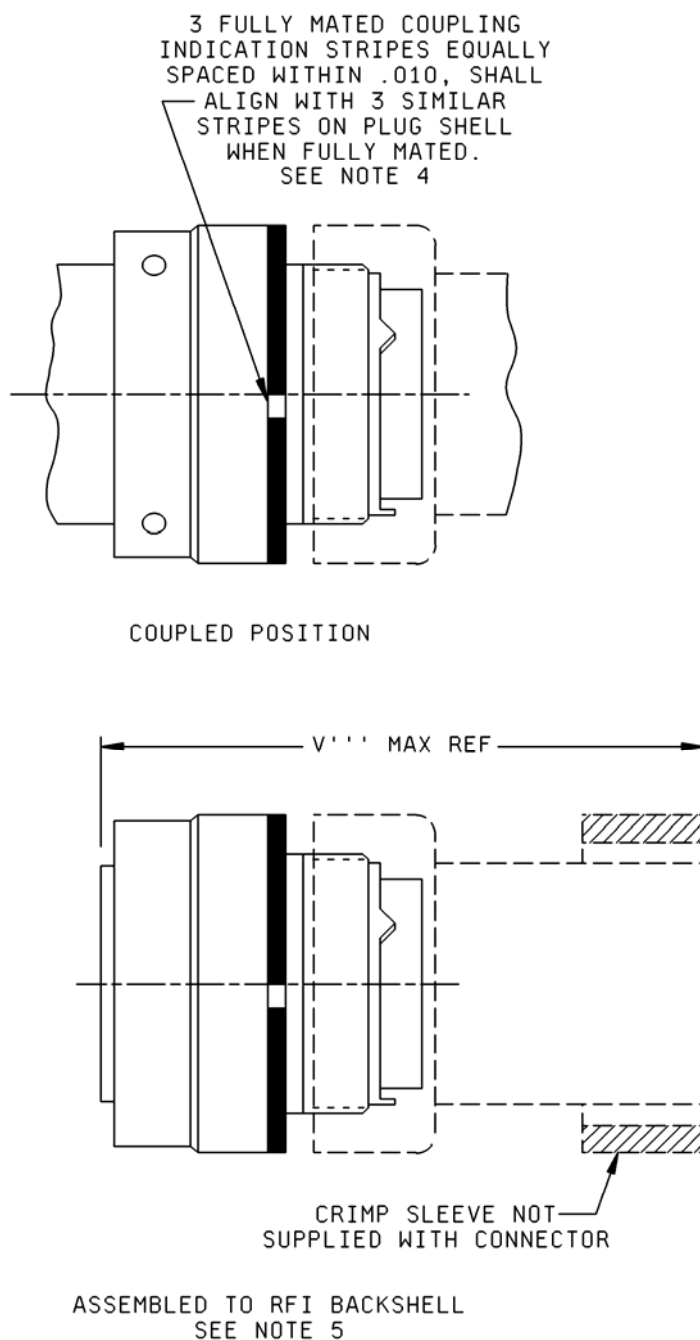


FIGURE 1. Plug, classes A and L dimensions - Continued.

## MS3475E

Shell size	A	F	R	S	V'''	Max weight in lbs (grams) <u>1/</u>	
						Pin	Socket
8	.782 (19.86)	.887 (22.53)	.369 (9.37)	.363 (9.22) .343 (8.71)	2.334 (59.28)	.0204 (9.26)	.0216 (9.81)
10	.926 (23.52)	.887 (22.53)	.497 (12.62)		2.334 (59.28)	.0406 (18.43)	.0421 (19.11)
12	1.043 (26.49)	.887 (22.53)	.614 (15.60)		2.334 (59.28)	.0505 (22.93)	.0536 (24.33)
14	1.183 (30.05)	.887 (22.53)	.739 (18.77)		2.334 (59.28)	.0639 (29.01)	.0692 (31.42)
16	1.305 (33.15)	.887 (22.53)	.864 (21.95)		2.334 (59.28)	.0788 (35.77)	.0880 (39.95)
18	1.391 (35.33)	.887 (22.53)	.969 (24.61)		2.334 (59.28)	.0864 (39.22)	.0957 (43.44)
20	1.531 (38.89)	.825 (20.96)	1.094 (27.79)	.425 (10.80) .405 (10.29)	2.334 (59.28)	.1016 (46.12)	.1114 (50.57)
22	1.656 (42.06)	.825 (20.96)	1.219 (30.96)		2.334 (59.28)	.1241 (56.34)	.1363 (61.88)
24	1.777 (45.14)	.825 (20.96)	1.344 (34.14)		2.334 (59.28)	.1400 (63.56)	.1916 (86.98)

1/ Less contacts and accessories. Maximum Weights do not apply to class S.

Inches	mm	Inches	mm	Inches	mm	Inches	mm
.008	0.20	.065	1.66	.200	5.08	.399	10.13
.025	0.64	.069	1.75	.218	5.54	.419	10.64
.029	0.74	.087	2.21	.225	5.72	1.230	31.24
.032	0.81	.097	2.46	.269	6.83		
.042	1.07	.101	2.57	.320	8.13		
.045	1.14	.107	2.72	.337	8.56		
.046	1.17	.187	4.75	.357	9.07		

## NOTES:

1. Dimensions are in inches. Metric equivalents are given for information only and are in parentheses.
2. Unless otherwise specified, tolerances are  $\pm .005$  (0.13 mm) for 3 place decimals, and  $\pm .01$  (0.3 mm) for 2 place decimals. Angular tolerances are  $X^\circ$ ,  $\pm 1^\circ$ .
3. Color bands:  $0.070 \pm .031$  (1.78  $\pm$  0.79 mm) wide, color blue.
4. Coupling indicator color optional.
5. Connector assembly must be used with a backshell. Backshell must be procured separately. See SAE-AS85049 for applicable backshells.

FIGURE 1. Plug, classes A and L dimensions - Continued.

## MS3475E

TABLE I. Contact cavities requiring reduced diameters (XX) for pins and sockets in outer row of contact cavities. 1/

Shell size	Insert arrangement	Contact Cavities
8	-33 & -98	A, B, C.
12	-10	C, G.
14	-12	A, B, C, D, E, F, G, H.
14	-18	A, C, E, G, J, L.
14	-19	B, D, F, H, K, M.
16	-26	A, B, C, D, E, F, G, H, J, K, L, M, N, P, R.
18	-32	A, B, C, D, E, F, G, H, J, K, L, M, N, P, R, S, T.
22	-41	A, B, C, D, E, F, G, H, J, K, L, M, N, P, R, S, T, U, V, W, X, Y.

1/ The reduced diameter "XX" refers to the diameters of the raised seal barriers (pin barrier rings) or lead-in chamfers (socket entry holes) to ensure proper sealing of pin and socket after mating. See MIL-DTL-26482, connector intermateability control dimensions (series 1 and series 2) figure for reduced diameter "XX" for contact size 20 only.

## REQUIREMENTS:

Dimensions and configuration: See figure 1 and table I.

Connector mating: This connector mates with MS3470 through MS3474, MS3477 and MS3479.

Intermateability and rear accessory interchangeability dimensions are in accordance with MIL-DTL-26482.

Class E is cancelled and replaced by class L.

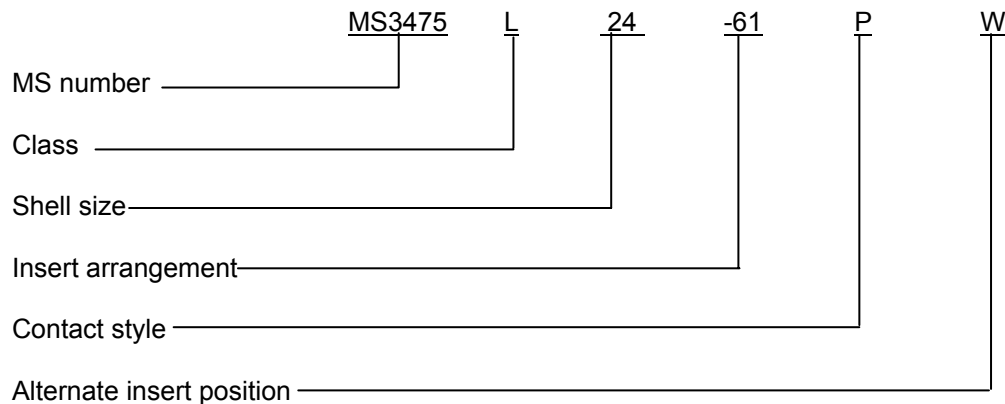
This specification sheet supersedes MS3475(Navy), MIL-C-83723/42A and MIL-C-83723/43A.

For insert arrangement, see MIL-STD-1669.

Insert arrangements requiring reduced diameters for raised seal barriers or lead-in chamfer on outer row of contact cavities as indicated, see table 1.

Connector identification marking shall be in accordance with MIL-DTL-26482. Example: MS3475L---, minimum height does not apply to shell sizes 8, 10 and 12.

Part or Identifying Number (PIN) example:



## MS3475E

Changes from previous issue. Marginal notations are not used in this revision to identify changes with respect to the previous issue due to the extent of the changes.

Referenced documents. In addition to MIL-DTL-26482, this document references the following:

MS3470  
MS3471  
MS3472  
MS3473  
MS3474  
MS3477  
MS3479  
MIL-STD-1669  
SAE-AS85049

## CONCLUDING MATERIAL

### Custodians:

Army – CR  
Navy – AS  
Air Force – 11  
DLA – CC

### Preparing activity:

DLA – CC

(Project 5935–4656–016)

### Review activities:

Army – AR, AV  
Navy – EC, SH  
Air Force – 99

NOTE: The activities listed above were interested in this document as of the date of this document. Since organizations and responsibilities can change, you should verify the currency of the information above using the ASSIST Online database at <http://assist.daps.dla.mil>.