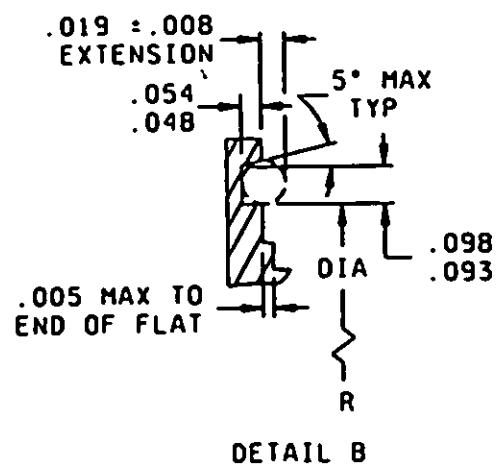
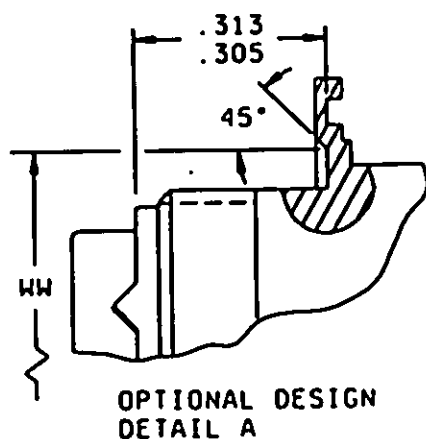




## MS3474H

Connector dimensions.

Size	A	B	F	G	H	J
8	.954(24.23) .923(23.44)	1.078(27.38) 1.047(26.59)	.707(17.95) .658(17.95)	.113(2.87) .086(2.19)	.524 (13.31)	.378(9.60) .346(8.79)
10	1.078(27.38) 1.047(26.59)	1.203(30.56) 1.172(29.77)	.707(17.95) .658(16.71)	.113(2.87) .086(2.19)	.524 (13.31)	.378(9.60) .346(8.79)
12	1.266(32.16) 1.235(31.37)	1.391(35.33) 1.360(34.54)	.707(17.95) .658(16.71)	.113(2.87) .086(2.19)	.524 (13.31)	.378(9.60) .346(8.79)
14	1.391(35.33) 1.360(34.54)	1.516(38.58) 1.485(37.72)	.707(17.95) .658(17.95)	.113(2.87) .086(2.19)	.524 (13.31)	.378(9.60) .346(8.79)
16	1.516(38.51) 1.485(37.72)	1.641(41.68) 1.610(40.89)	.707(17.95) .658(17.95)	.113(2.87) .086(2.19)	.524 (13.31)	.378(9.60) .346(8.79)
18	1.641(41.68) 1.610(40.89)	1.766(44.86) 1.735(44.07)	.707(17.95) .658(17.95)	.113(2.87) .086(2.19)	.524 (13.31)	.378(9.60) .346(8.79)
20	1.828(46.63) 1.797(45.64)	1.954(49.63) 1.923(48.84)	.772(19.61) .721(18.31)	.148(3.76) .096(2.44)	.521 (13.23)	.378(9.60) .346(8.79)
22	1.954(49.63) 1.923(48.84)	2.078(52.78) 2.047(51.99)	.772(19.61) .721(18.31)	.148(3.76) .096(2.44)	.521 (13.23)	.378(9.60) .346(8.79)
24	2.078(52.78) 2.047(51.99)	2.203(55.96) 2.172(55.17)	.772(19.61) .721(18.31)	.148(3.76) .096(2.44)	.521 (13.23)	.405(10.29) .379(9.63)

FIGURE 1. Connectors and dimensions - Continued.

## MS3474H

## Connector dimensions - Continued.

Size	N thread UNEF-2A	R	X	AA	WW	Pin	Socket
8	.5625-24 (14.29-24)	.609 (15.47)	.525 (13.34)	.767 (19.48)	.570(14.48) .566(14.38)	.0224 (.569)	.0296 (.752)
10	.6875-24 (17.46-24)	.734 (18.64)	.650 (16.51)	.892 (22.66)	.693(17.60) .689(17.50)	.0342 (8.69)	.0358 (.909)
12	.875-20 (22.23-20)	.921 (23.39)	.813 (20.55)	1.079 (27.41)	.868(22.05) .864(21.95)	.0497 (1.262)	.0528 (1.341)
14	1.000-20 (25.40-20)	1.046 (26.57)	.937 (23.80)	1.205 (30.61)	.994(25.25) .988(25.10)	.0621 (1.577)	.0673 (1.709)
16	1.125-18 (28.58-18)	1.171 (29.74)	1.061 (26.95)	1.329 (33.76)	1.122(28.50) 1.116(28.35)	.0766 (1.946)	.0858 (2.180)
18	1.250-18 (31.75-18)	1.296 (32.92)	1.186 (30.12)	1.455 (36.96)	1.238(31.45) 1.232(31.29)	.0899 (2.283)	.1003 (2.548)
20	1.375-18 (34.93-18)	1.484 (37.69)	1.311 (33.30)	1.579 (40.11)	1.364(34.65) 1.359(34.52)	.1153 (2.929)	.1280 (3.251)
22	1.500-18 (38.10-18)	1.609 (40.87)	1.436 (36.47)	1.705 (43.81)	1.492(37.90) 1.482(37.64)	.1336 (3.393)	.1495 (3.797)
24	1.625-18 (41.28-18)	1.734 (44.04)	1.561 (39.65)	1.829 (46.46)	1.617(41.07) 1.607(40.82)	.1578 (4.008)	.1777 (4.514)

Inches	mm	Inches	mm	Inches	mm	Inches	mm	Inches	mm
.005	0.13	.054	1.37	.108	2.74	.305	7.75	.369	9.37
.008	0.20	.060	1.50	.125	3.18	.306	7.77	1.215	30.86
.019	0.48	.062	1.57	.216	5.49	.313	7.95	1.275	32.39
.048	1.22	.093	2.36	.278	7.06	.336	8.53		

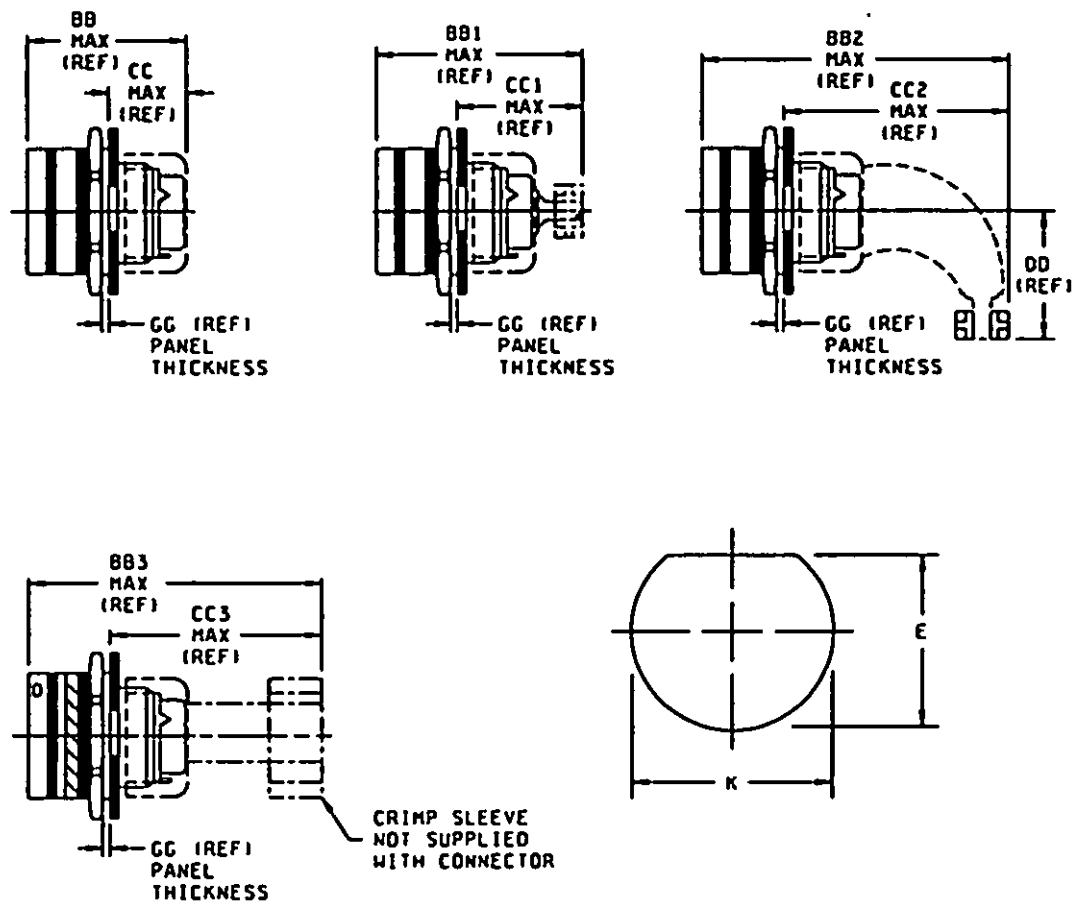
## NOTES:

1. Dimensions are in inches. Metric equivalents are in parentheses.
2. Metric equivalents are given for general information only.
3. Unless otherwise specified, tolerances are  $\pm .005$  (0.13 mm) for three place decimals and  $\pm .01$  (0.3 mm) for two place decimals, and angular tolerances are  $\pm 0^\circ \pm 1$  and  $0^\circ 0' \pm 30'$ .
4. Polarizing stripe, color optional.
5. Class E cancelled and replaced by class L.
6. MS3186 Hex nut may be substituted provide .125/.108 thickness requirement is satisfied.
7. Color band: .070 $\pm$ .031 wide, color blue. Band location must be such that it is visible when mounted.
8. Rear accessory interchangeability dimensions shall be in accordance with MIL-C-26482.
9. Intermateability dimensions shall be in accordance MIL-C-26482.

(N)  
(H)

FIGURE 1. Dimensions and configurations - Continued.

MS3474H

FIGURE 2. Backshell.

## MS3474H

Backshell dimensions.

Size	E	K	BB	BB1	BB2	BB3	CC
8	.536 (13.61)	.572 (14.53)	1.492 (37.90)	1.842 (46.79)	2.115 (53.72)	2.339 (59.41)	.801 (20.35)
10	.661 (16.79)	.697 (17.70)	1.492 (37.90)	1.842 (46.79)	2.115 (53.72)	2.339 (59.41)	.801 (20.35)
12	.824 (20.93)	.895 (22.73)	1.492 (37.90)	1.842 (46.79)	2.250 (57.12)	2.339 (59.41)	.801 (20.35)
14	.948 (24.08)	1.010 (25.65)	1.492 (37.90)	2.077 (52.76)	2.340 (59.44)	2.339 (59.41)	.801 (20.35)
16	1.072 (27.23)	1.135 (28.83)	1.492 (37.90)	2.077 (52.76)	2.475 (62.87)	2.339 (59.41)	.801 (20.35)
18	1.197 (30.40)	1.260 (32.00)	1.492 (37.90)	2.077 (52.76)	2.574 (65.38)	2.339 (59.41)	.801 (20.35)
20	1.322 (33.58)	1.385 (35.18)	1.522 (39.42)	2.137 (54.38)	2.767 (70.28)	2.397 (60.88)	.798 (20.27)
22	1.447 (36.75)	1.510 (38.35)	1.522 (39.42)	2.137 (54.38)	2.890 (73.41)	2.397 (60.88)	.798 (20.27)
24	1.572 (39.93)	1.635 (41.53)	1.522 (39.42)	2.137 (54.38)	3.012 (76.50)	2.397 (60.88)	.798 (20.27)

FIGURE 2. Backshell - Continued.

## MS3474H

Backshell dimensions - Continued.

Size	CC1	CC2	CC3	DO	GG
8	1.151 (29.24)	1.424 (36.17)	1.648 (41.68)	.830 (21.08)	.187(4.75) .062(1.57)
10	1.151 (29.24)	1.424 (36.17)	1.648 (41.68)	.880 (22.35)	.187(4.75) .062(1.57)
12	1.151 (29.24)	1.559 (39.60)	1.648 (41.68)	.950 (24.13)	.187(4.75) .062(1.57)
14	1.386 (35.20)	1.649 (41.88)	1.648 (41.68)	1.010 (25.65)	.187(4.75) .062(1.57)
16	1.386 (35.20)	1.784 (45.31)	1.648 (41.68)	1.070 (27.18)	.187(4.75) .062(1.57)
18	1.386 (35.20)	1.883 (47.83)	1.648 (41.68)	1.130 (28.70)	.187(4.75) .062(1.57)
20	1.383 (35.13)	2.013 (51.13)	1.645 (41.78)	1.190 (30.23)	.250(6.35) .062(1.57)
22	1.383 (35.13)	2.136 (54.25)	1.645 (41.78)	1.260 (32.00)	.250(6.35) .062(1.57)
24	1.383 (35.13)	2.258 (57.35)	1.645 (41.78)	1.320 (33.53)	.219(5.56) .062(1.57)

## NOTES:

1. Dimensions are in inches. Metric equivalents are in parentheses.
2. Metric equivalents are given for information only.
3. Unless otherwise specified, tolerances are  $\pm 0.005$  (0.13 mm) for three place decimals and  $\pm 0.01$  (0.3 mm) for two place decimals, and angular tolerances are  $\pm 0^\circ \pm 1^\circ$  and  $0^\circ 0'$   $\pm 30'$ .
4. Rear accessory interchangeability dimensions shall be in accordance with MIL-C-26482.

FIGURE 2. Backshell - Continued.

## MS3474H

TABLE I. Insert arrangements requiring reduced diameters for raised seal barriers or lead-in chamfer on outer row of contact cavities.

Shell size	Insert arrangement	Contact cavities
8	-33 and -98	A, B, C
12	-10	C, G
14	-9	A, B, C, D, E, F, G, H, J
14	-12	A, B, C, D, E, F, G, H
14	-18	A, C, E, G, J, L
14	-19	B, D, F, H, K, M
16	-26	A, B, C, D, E, F, G, H, J, K, L, M, N, P, R
18	-32	A, B, C, D, E, F, G, H, J, K, L, M, N, P, R, S, T
22	-41	A, B, C, D, E, F, G, H, J, K, L, M, N, P, R, S, T, U, V, W, X, Y

## REQUIREMENTS:

Dimensions and configuration: See figure 1 and 2.

Mating connector: This connector mates with MS3475 and MS3476.

For insert arrangement: See MIL-STD-1669 and table I.

For connector accessories: See MIL-C-85049.

Connector assembly must be used with a backshell. Backshell must be acquired separately.

Marking: Connectors identification marking shall be in accordance with MIL-C-26482.

Part or Identifying Number (PIN) example (1):

	MS3474	W	8	-	33	P	W
MS number	-----						
Class	-----						
Shell size	-----						
Insert arrangement	-----						
Contact style	-----						
Insert position	-----						

# MS3474H

Part or Identifying Number (PIN) example (2):

	<u>MS3474</u>	<u>W</u>	<u>16</u>	-	<u>8</u>	<u>P</u>	<u>W</u>
MS number	-----						
Class	-----						
Shell size	-----						
Insert arrangement	-----						
Contact style	-----						
Insert position	-----						

Qualification:

OPL evaluating activity: Defense Electronics Supply Center, (DESC-E), Dayton, OH 45444.

Superseding data:

<u>MIL-C-83723/5</u>	<u>R</u>	<u>**</u>	<u>**</u>	<u>*</u>	<u>MS3474</u>	<u>L</u>	<u>**</u>	<u>-</u>	<u>**</u>	<u>*</u>
-----	-----	-----	-----	-----	-----	-----	-----	-----	-----	-----
					Class					
					Shell size					
					Insert arrangement					
					Insert position					

<u>MIL-C-83723/6</u>	<u>R</u>	<u>**</u>	<u>-</u>	<u>**</u>	<u>*</u>	<u>MS3474</u>	<u>L</u>	<u>**</u>	<u>-</u>	<u>**</u>	<u>*</u>
-----	-----	-----	-----	-----	-----	-----	-----	-----	-----	-----	
					Class						
					Shell size						
					Insert arrangement						
					Insert position						



## MS3474H

<u>MS3114</u>	<u>E</u>	<u>**</u>	<u>-</u>	<u>*</u>	<u>*</u>	<u>W</u>		<u>MS3474</u>	<u>*</u>	<u>**</u>	<u>-</u>	<u>**</u>	<u>*</u>	<u>W</u>
							MS number							
							Class							
							Shell size							
							Insert arrangement							
							Contact style							
							Insert position							

### Cross reference of class designators

Old (MIL-C-83723)	New (MIL-C-26482)
A	A
R	L
G	S

## CONCLUDING MATERIAL

**Custodians:**

Air Force -85  
Army - CR  
Navy - AS  
NASA - NA

**Review activities:**

Army - AR  
Navy - EC, SH  
Air Force - 99

**User activities:**

Air Force - 11  
Army - AV  
Navy - MC

**Preparing activity:**

Army - CR

Agent:  
DLA - ES

(Project 5935-3988)