

INCH-POUND

MS3473B
 1 March 2007
 SUPERSEDING
 MS3473A
 05 September 1995

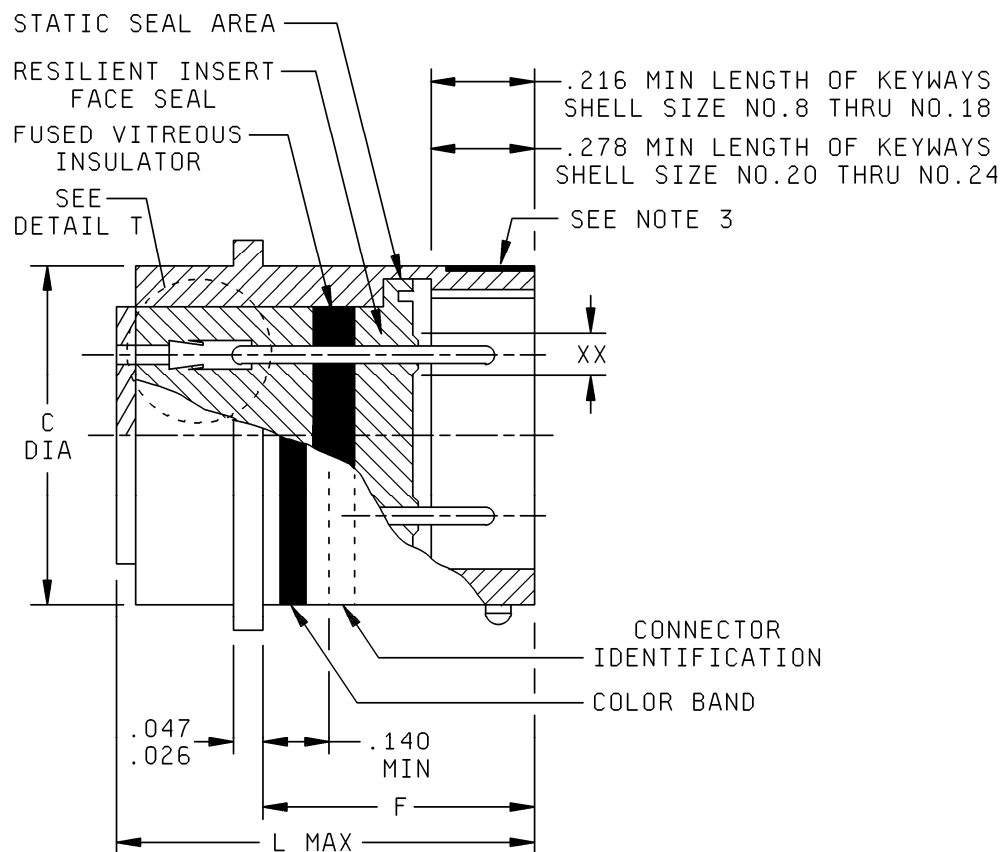
DETAIL SPECIFICATION SHEET

CONNECTORS, RECEPTACLE, ELECTRICAL, SERIES II, HERMETIC,
 SOLDERLESS, SOLDER MOUNTING, BAYONET COUPLING, CLASS N

Reactivated after 1 March 2007 and may be used
 for new and existing designs and acquisitions.

This specification is approved for use by all Departments and
 Agencies of the Department of Defense.

The requirements for acquiring the product described herein
 shall consist of this specification sheet and MIL-DTL-26482.



NOTE: For "XX", see note 4 and table I for contact cavities requiring reduced dimensions.

FIGURE 1. Receptacle, class N, dimensions and configurations.

MS3473B

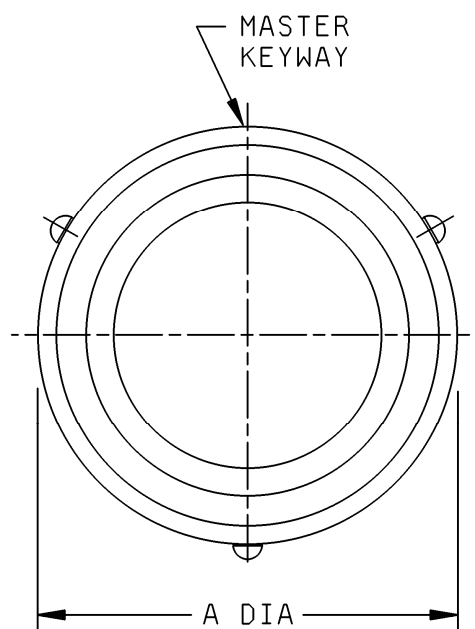
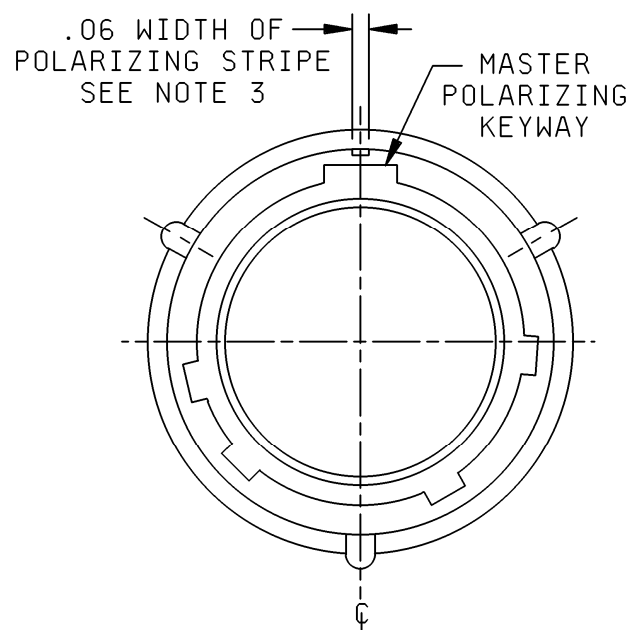
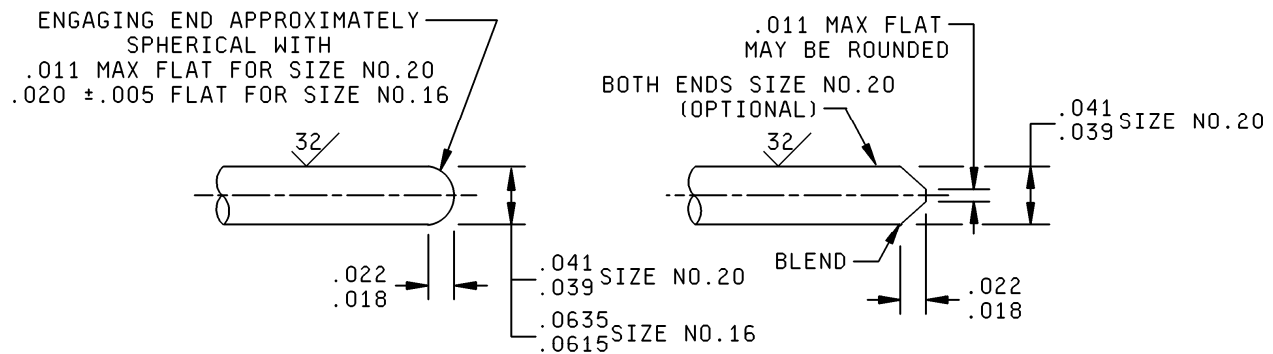
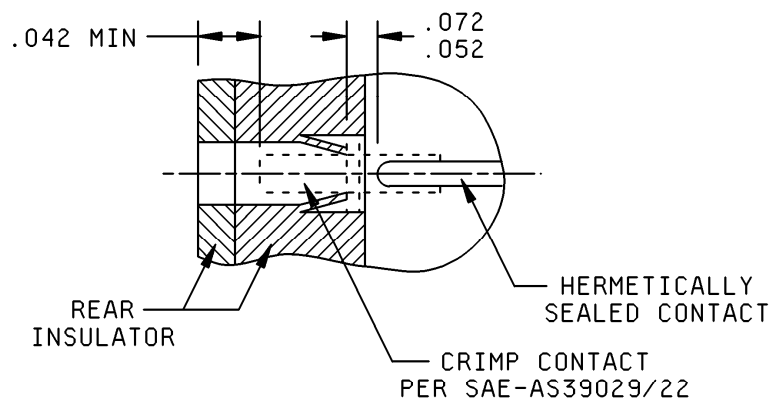
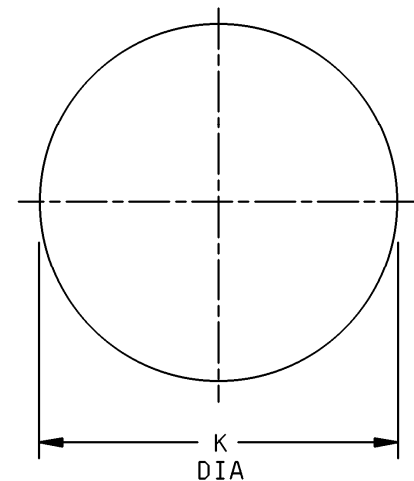


FIGURE 1. Receptacle, class N, dimensions and configurations - Continued.

MS3473B

ENGAGING END OF CONTACTSDETAIL TPANEL CUTOUT

Inches (mm)	Inches (mm)	Inches (mm)
.005 (0.13)	.039 (0.99)	.0615 (1.56)
.011 (0.28)	.041 (1.04)	.0635 (1.61)
.018 (0.46)	.042 (1.07)	.072 (1.83)
.020 (0.51)	.047 (1.19)	.140 (3.56)
.022 (0.56)	.052 (1.32)	.216 (5.49)
.026 (0.66)	.06 (1.5)	.278 (7.06)

FIGURE 1. Receptacle, class N, dimensions and configurations - Continued.

MS3473B

Shell size	A	C	F	K	L
8	.635 (16.13) .615 (15.62)	.563 (14.30) .557 (14.15)	.735 (18.67) .711 (18.06)	.570 (14.48)	1.078 (27.38)
10	.760 (19.30) .740 (18.80)	.673 (17.09) .667 (16.94)	.735 (18.67) .711 (18.06)	.680 (17.27)	
12	.854 (21.69) .834 (21.18)	.782 (19.86) .776 (19.71)	.735 (18.67) .711 (18.06)	.789 (20.04)	
14	.979 (24.87) .959 (24.36)	.907 (23.04) .901 (22.89)	.735 (18.67) .711 (18.06)	.914 (23.22)	
16	1.104 (28.04) 1.084 (27.53)	1.032 (26.21) 1.026 (26.06)	.735 (18.67) .711 (18.06)	1.039 (26.39)	
18	1.228 (31.19) 1.208 (30.68)	1.157 (29.39) 1.151 (29.24)	.735 (18.67) .711 (18.06)	1.164 (29.57)	
20	1.322 (33.58) 1.302 (33.07)	1.251 (31.78) 1.245 (31.62)	.823 (20.90) .799 (20.29)	1.258 (31.95)	1.140 (28.96)
22	1.448 (36.78) 1.428 (36.27)	1.376 (34.95) 1.370 (34.80)	.823 (20.90) .799 (20.29)	1.383 (35.13)	
24	1.574 (39.98) 1.554 (39.47)	1.501 (38.13) 1.495 (37.97)	.823 (20.90) .799 (20.29)	1.508 (38.30)	

NOTES:

1. Dimensions are in inches. Metric equivalents are given for information only.
2. Unless otherwise specified, tolerances shall be .XX ± .01, .XXX ± .005. Angular tolerances shall be ± 1°
3. Polarizing stripe, color optional.
4. Insert arrangements requiring reduced diameters for raised seal barrier on outer row of contact cavities as indicated (see figure 1).

FIGURE 1. Receptacle, class N, dimensions and configurations - Continued.

MS3473B

TABLE I. Contact cavities requiring reduced diameters (XX) for pins and sockets in outer row of contact cavities. 1/

Shell size	Insert arrangement	Contact Cavities
8	-33 & -98	A, B, C.
12	-10	C, G.
14	-12	A, B, C, D, E, F, G, H.
14	-18	A, C, E, G, J, L.
14	-19	B, D, F, H, K, M.
16	-26	A, B, C, D, E, F, G, H, J, K, L, M, N, P, R.
18	-32	A, B, C, D, E, F, G, H, J, K, L, M, N, P, R, S, T.
22	-41	A, B, C, D, E, F, G, H, J, K, L, M, N, P, R, S, T, U, V, W, X, Y.

1/ The reduced diameter "XX" refers to the diameters of the raised seal barriers (pin barrier rings) or lead-in chamfers (socket entry holes) to ensure proper sealing of pin and socket after mating. See MIL-DTL-26482, connector intermateability control dimensions (series 1 and series 2) figure for reduced diameter "XX" for contact size 20 only.

REQUIREMENTS:

Dimensions and configuration: See figure 1 and table I.

Connector mating: This connector mates with MS3475 and MS3476.

For insert arrangement: See MIL-STD-1669.

Contact SAE-AS39029/22-XX-XX must be used for wire terminations.

Shell material: Cold rolled steel, in accordance with ASTM-A108.

Shell finish: .00001 minimum tin in accordance with ASTM-B545 and ASTM-B339, over nickel in accordance with SAE-AMS-QQ-N-290.

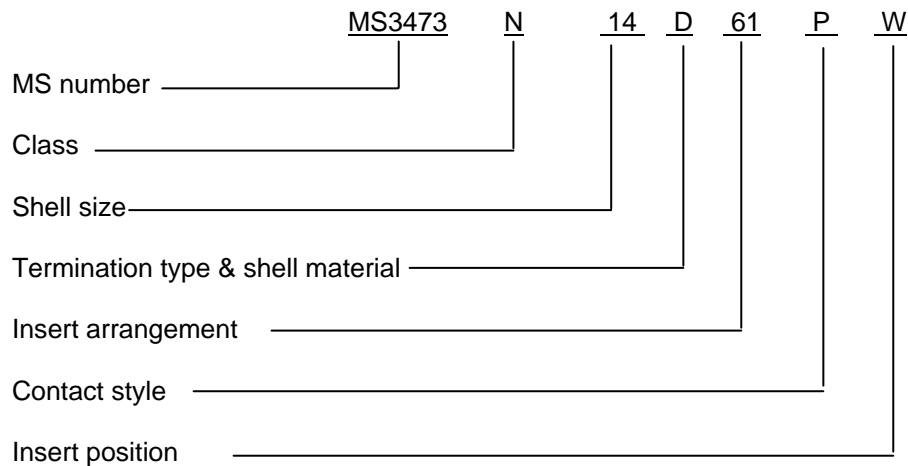
Color band: .070 ± .031 wide, color blue. Band location must be such that it is visible when mounting.

Insertion/removal tool MIL-I-81969/16-XX to be used with this connector.

Maximum wire diameter permissible: .074 for size 20 contact, .103 for size 16 contact.

Intermateability dimensions shall be in accordance with MIL-DTL-26482.

Part or Identifying Number (PIN) example:



MS3473B

Changes from previous issue. Marginal notations are not used in this revision to identify changes with respect to the previous issue due to the extent of the changes.

Referenced documents. In addition to MIL-DTL-26482, this document references the following:

MS3475
MS3476
MIL-STD-1669
ASTM-A108
ASTM-B339
ASTM-B545
SAE-AMS-QQ-N-290
SAE-AS39029/22

CONCLUDING MATERIAL

Custodians:

Army - CR
Navy - AS
Air Force - 11
DLA - CC

Preparing activity:

DLA - CC

(Project 5935-4656-014)

Review activities:

Army - AV
Navy - EC, SH

NOTE: The activities listed above were interested in this document as of the date of this document. Since organizations and responsibilities can change, you should verify the currency of the information above using the ASSIST Online database at <http://assist.daps.dla.mil>.