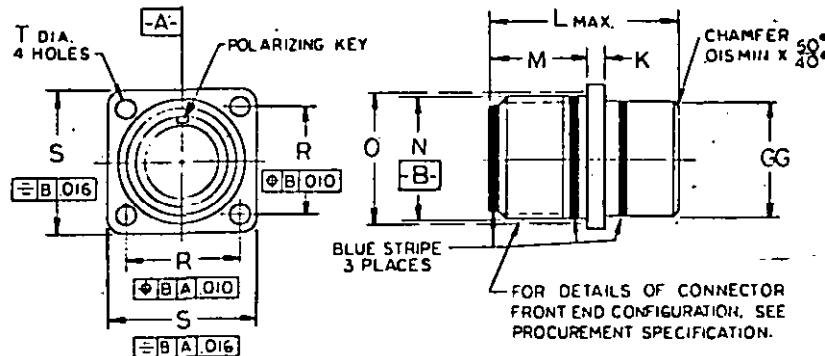


FED. SUP CLASS
5935

CLASSES L, U & W ENVIRONMENT RESISTANT
INTERFACE ONLY

CLASS K CANCELLED AFTER 9 MAR 72.

© CLASS U INACTIVE FOR DESIGN AFTER 23 MAR 76
USE CLASS L FOR NEW DESIGN

NOTES:

1. Dimensions are in inches. Unless otherwise specified, tolerances: decimals $\pm .016$.
2. Dimensions and tolerancing in accordance with ANSI Y14.5-1973
3. MIL-C-5015 crimp contact, front and rear release connectors and solder contact connectors are interchangeable.
4. Unless otherwise shown, corresponding features of pin and socket contact connectors are identical.
5. For design feature purposes, this standard takes precedence over procurement documents referenced herein.
6. Referenced documents shall be of the issue in effect on date of invitations for bid.
- © 7. For insert arrangements see MIL-STD-1651.

© FOR CHANGES SEE SHEETS 1 & 2

P.A. NAVY-AS Other Cust ARMY-EL AF-85	International Interests	TITLE CONNECTORS, RECEPTACLE, ELECTRICAL, BOX MOUNTING, REAR RELEASE, CRIMP CONTACT, AN TYPE	MILITARY STANDARD MS 3452
Procurement Specification MIL-C-5015	SUPERSEDES:		SHEET 1 OF 2

DD FORM 1 SEP 63 672 (Coordinated) PREVIOUS EDITIONS OF THIS FORM ARE OBSOLETE.

PROJECT NO. 5935-1990-3

APPROVED OCTOBER 18 1971 REVISED © 23 MAR 76

User activities: Army, Navy, Air Force
Reviewer activities: Army, Navy, Air Force
AT, AV, ME, MI, MU
EC
Air Force 11, 17, 80, 85

This military standard is approved for use by all Departments and Agencies of the Department of Defense. Selection for all new engineering and design applications and for repetitive use shall be made from this document.

FED. SUP CLASS
5935

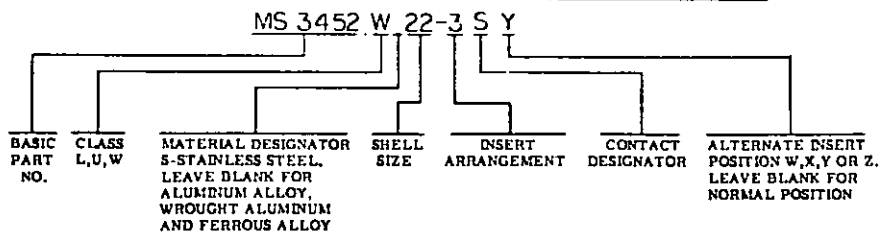
Army
Navy
Air Force

User activities:

Army AT, AV, ME, M, MU
Navy EC
Air Force 1, 17, 80, 85

SIZE	GG ± .016	K ± .015	L MAX SIZE 16:12 CONT	SIZE 8:4:0 CONT	M ± .031 -.000	N +.000 -.002	O (REF.) MTG. HOLES	R T. P. E - E	S ± .031	T +.010 -.005
8S	.500	.055	1.642		.562	.532	.562	.594	.875	.120
10S	.625				.656	.626	.656	.719	1.000	
10SL	.625				.656	.626	.656	.719	1.000	
12S	.750				.750	.782	.812	.812	1.094	
12	.750				.750	.782	.812	.812	1.094	
14S	.875				.862	.906	.938	.906	1.186	
14	.875				.750	.906	.938	.906	1.186	
16S	1.000				.862	1.032	1.062	.969	1.281	
16	1.000	.055	1.657		.750	1.032	1.062	.969	1.281	
18	1.062	.125			1.156	1.188	1.188	1.062	1.375	
20	1.187				1.282	1.312	1.312	1.156	1.500	
22	1.312				.750	1.406	1.438	1.250	1.625	.120
24	1.437				.812	1.532	1.562	1.375	1.750	.147
28	1.750				.812	1.782	1.812	1.562	2.000	.147
32	2.000				.875	2.032	2.062	1.750	2.250	.173
36	2.250					2.282	2.312	1.938	2.500	
40	2.500					2.532	2.562	2.188	2.750	
44	2.750					2.782	2.812	2.375	3.000	
48	3.000	.125	1.662	1.637	.875	3.032	3.062	2.625	3.250	.173

EXAMPLE OF PART NO.: MS3452W 22-3SY



This military standard is approved for use by all Departments and Agencies of the Department of Defense. Selection for all new engineering and design applications and for repetitive use shall be made from this document.

APPROVED OCTOBER 18 1971 REVISED © FOR CHANGES SEE SHEETS 182

P.A. NAVY-AS Other Cust ARMY-EL AF-85	International interest:	TITLE CONNECTORS, RECEPTACLE, ELECTRICAL, BOX MOUNTING, REAR RELEASE, CRIMP CONTACT, AN TYPE	MILITARY STANDARD MS3452
Procurement Specification MIL-C-5015		SUPERSEDES:	SHEET 2 OF 2