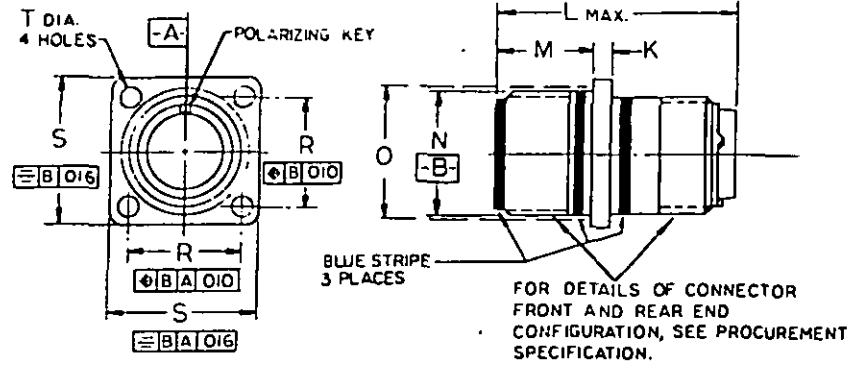


FED. SUP CLASS
5935



CLASSES KLU&W ENVIRONMENT RESISTANT

CLASS K CONNECTOR WITH ELECTROLESS NICKEL FINISH INACTIVE FOR DESIGN AFTER 25 APRIL 1974

- (E) CLASS U INACTIVE FOR DESIGN AFTER 23 MAR 76
- USE CLASS L FOR NEW DESIGN

NOTES:

1. DIMENSIONS IN INCHES. UNLESS OTHERWISE SPECIFIED, TOLERANCES: DECIMALS ±.016
2. DIMENSIONS AND TOLERANCING IN ACCORDANCE WITH ANSI Y14.5-1973
3. MIL-C-5015 CRIMP CONTACT, FRONT AND REAR RELEASE CONNECTORS AND SOLDER CONTACT CONNECTORS ARE INTERMATEABLE.
4. UNLESS OTHERWISE SHOWN, CORRESPONDING FEATURES OF PIN AND SOCKET CONTACT CONNECTORS ARE IDENTICAL.
5. EXTRACTION TOOL MS3165-16 SHALL BE USED TO REMOVE SIZE 16 CONTACTS THAT ARE CRIMPED TO MIL-W-27125 OR MIL-W-27500 FIRE ZONE WIRE.
- (E) 6. FOR INSERT ARRANGEMENTS SEE MIL-STD-1651.

FOR DESIGN FEATURE PURPOSES, THIS STANDARD TAKES PRECEDENCE OVER PROCUREMENT DOCUMENTS REFERENCED HEREIN. REFERENCED DOCUMENTS SHALL BE OF THE ISSUE IN EFFECT ON DATE OF INVITATIONS FOR BID.

(E) FOR CHANGES SEE SHEETS 1&2

User activities: Army, Navy, Air Force
 Reviser activities: Army AT, AV, ME, MI, MU, Navy EC, Air Force II, 17, 80, 85

This military standard is approved for use by all Departments and Agencies of the Department of Defense. Selection for all new engineering and design applications and for repetitive use shall be made from this document.

APPROVED OCTOBER 18 1971 REVISED (E) 23 MAR 76

P.A. NAVY-AS	International Interest:	TITLE (E) CONNECTORS, RECEPTACLE, ELECTRICAL, WALL MOUNTING, REAR RELEASE, CRIMP CONTACT, AN TYPE	MILITARY STANDARD
Other Cust ARMY-EL AF-85			MS 3450
Procurement Specification MIL-C-5015		SUPERSEDES:	SHEET 1 OF 2

FED. SUP CLASS
5935

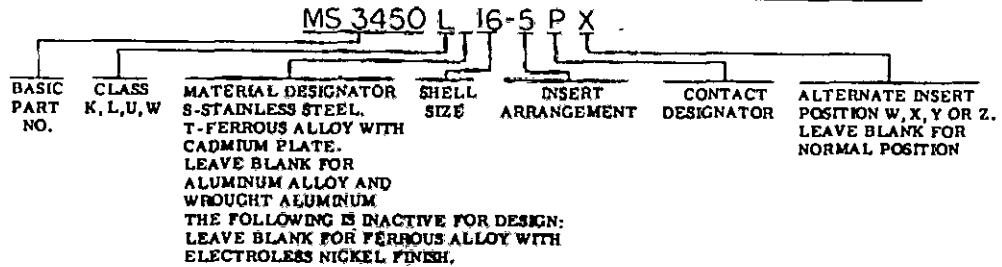
Reviewer activities: Army AT, AV, ME, MI, MU
Navy EC
Air Force 11, 17, 80, 85

User activities: Army
Navy
Air Force

SIZE	K ±.015	L MAX.		M ±.031 -.000	N +.000 -.062	O (REE) MTG. HOLE	R T.P. E-E	S ±.031	T +.010 -.005	
		SIZE 16:12 CONTS	SIZE 8:10 CONTS						CLASS LW	CLASS K
85	.083	2.031		.562	.532	.562	.574	.875	.120	.150
105					.656	.688	.715	1.000		
105L					.656	.688	.715	1.000		
125		2.031		.562	.782	.812	.812	1.094		
12		2.125		.750	.782	.812	.812	1.094		
145		2.031		.562	.506	.538	.506	1.188		
14		2.125		.750	.506	.538	.506	1.188		
165		2.031		.562	1.032	1.062	.562	1.281		
16	.083	2.125	2.500	.750	1.032	1.062	.562	1.281		.150
18	.125				1.156	1.188	1.062	1.375		.177
20					1.282	1.312	1.156	1.500		
22				.750	1.406	1.438	1.250	1.625	.120	
24				.812	1.532	1.562	1.375	1.750	.147	
28				.812	1.782	1.812	1.562	2.000	.147	.177
32				.875	2.032	2.062	1.750	2.250	.175	.205
36					2.282	2.312	1.938	2.500		
40					2.532	2.562	2.188	2.750		
44					2.782	2.812	2.375	3.000		
48	.125	2.125	2.500	.875	3.032	3.062	2.625	3.250	.175	.205

(E)

EXAMPLE OF PART NO.: MS3450L 16-5PX



This military standard is approved for use by all Departments and Agencies of the Department of Defense. Selection for all new engineering and design applications and for repetitive use shall be made from this document.

P.A NAVY - AS Other Cust ARMY - EL AF - 85	International interest	TITLE (E) CONNECTORS, RECEPTACLE, ELECTRICAL, WALL MOUNTING, REAR RELEASE, CRIMP CONTACT, AN TYPE	MILITARY STANDARD MS3450
Procurement Specification MIL-C-5015		SUPERSEDES:	SHEET 2 OF 2

APPROVED OCTOBER 18 1971 REVISED (E) FOR CHANGES SEE SHEETS 182