

INCH-POUND

MS3449D
 1 March 2007
 SUPERSEDING
 MS3449C
 29 October 1986

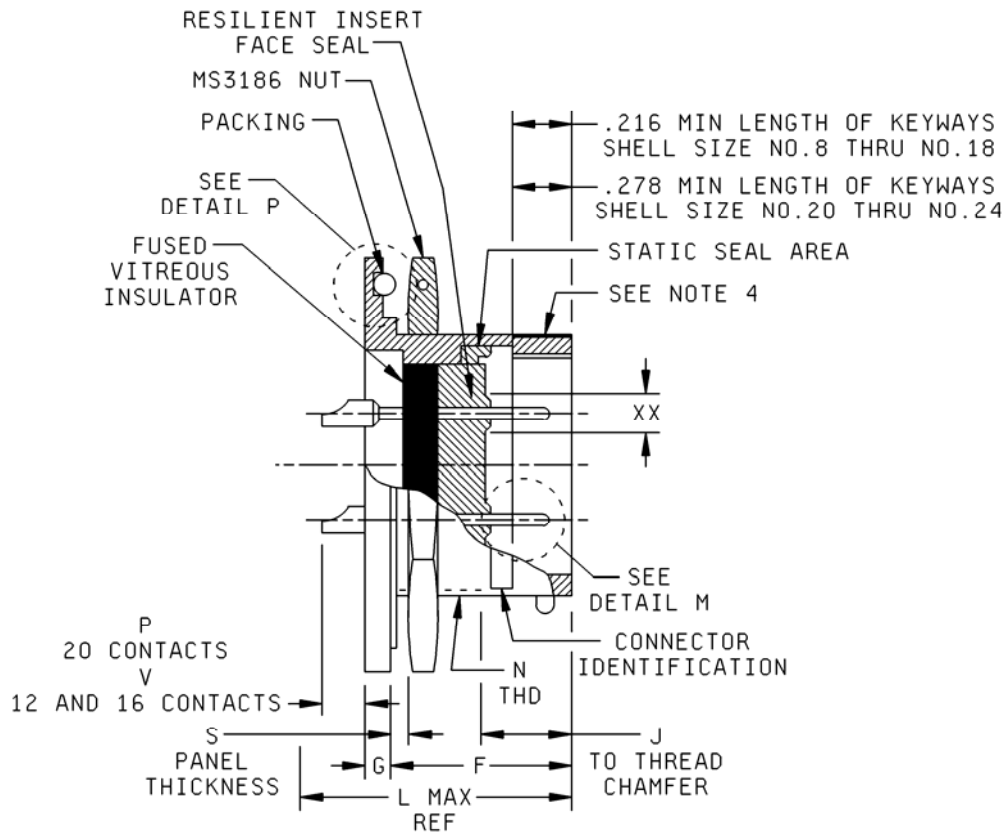
DETAIL SPECIFICATION SHEET

CONNECTORS, RECEPTACLE, ELECTRICAL, SERIES II,
 SINGLE HOLE MOUNT, BAYONET COUPLING,
 SOLDER PIN CONTACT, CLASS H

Inactive for new design after 15 December 1998.

This specification is approved for use by all Departments and
 Agencies of the Department of Defense.

The requirements for acquiring the product described herein
 shall consist of this specification sheet and MIL-DTL-26482.



NOTE: For "XX", see note 5 and table I for contact cavities requiring reduced dimensions.

FIGURE 1. Receptacle, class H, dimensions and configurations.

MS3449D

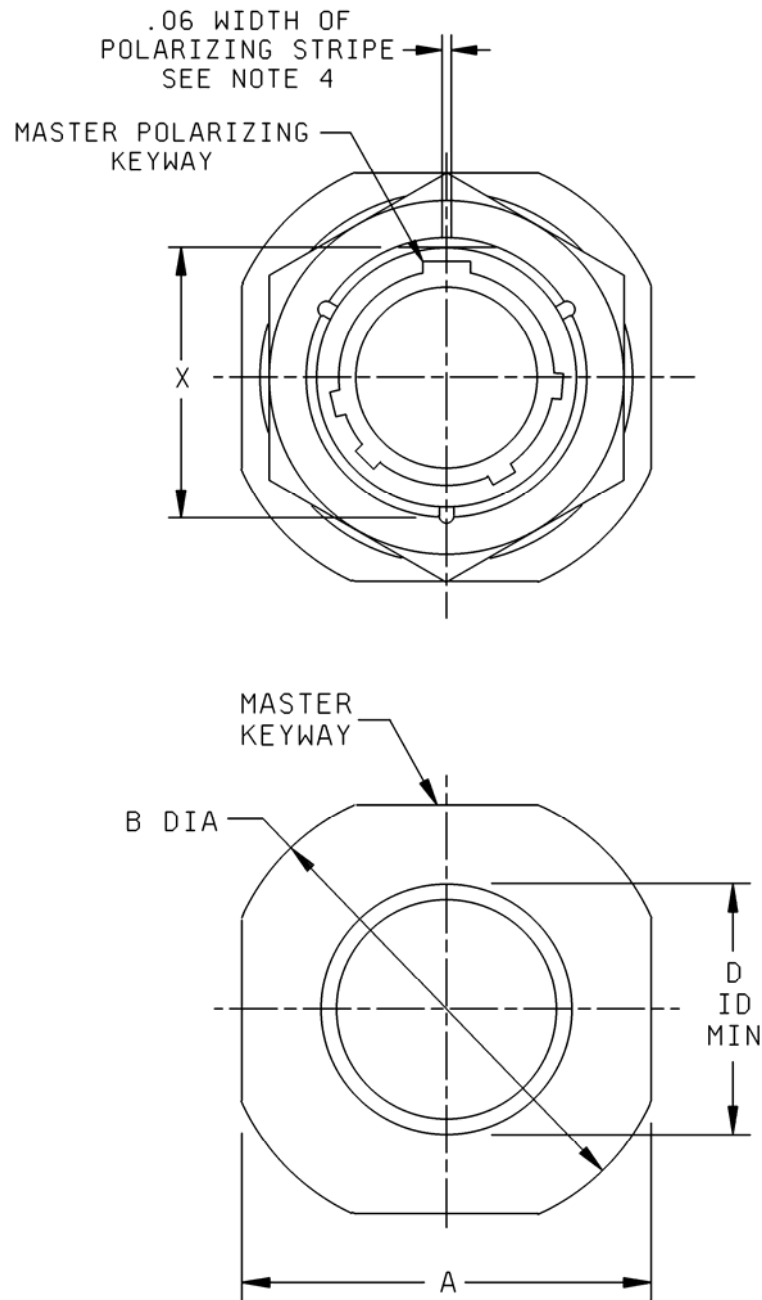
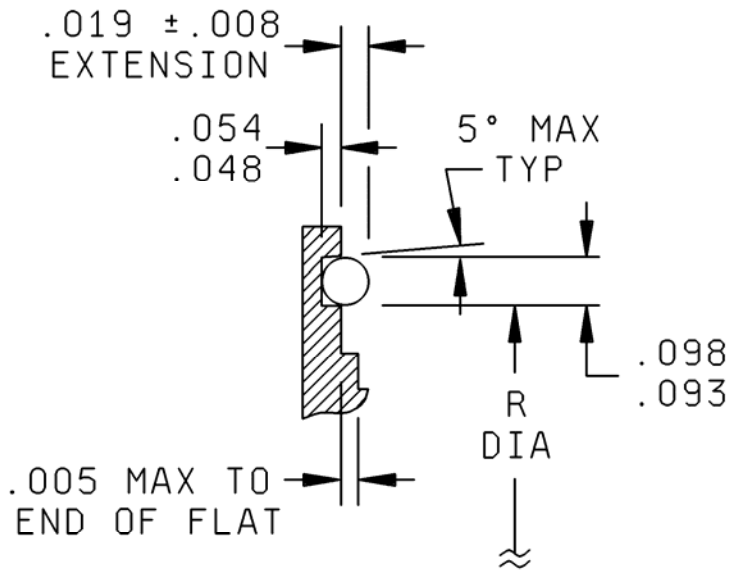
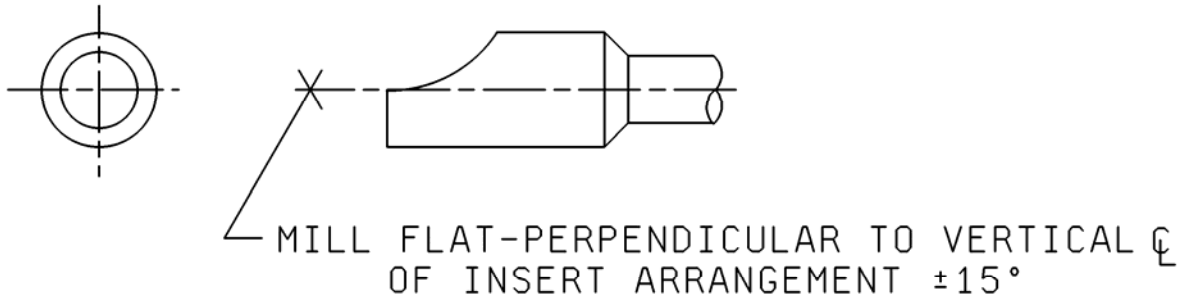


FIGURE 1. Receptacle, class H, dimensions and configurations - Continued.

MS3449D



DETAIL P



SOLDER POT ORIENTATION

XX SEE NOTE 5 AND TABLE I
FOR CONTACT CAVATIES
REQUIRING REDUCED DIMENSION

FIGURE 1. Receptacle, class H, dimensions and configurations - Continued.

MS3449D

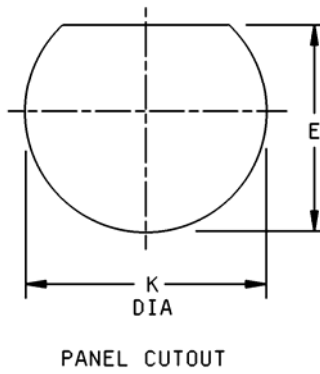
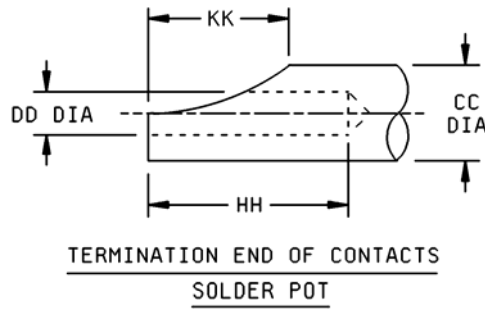
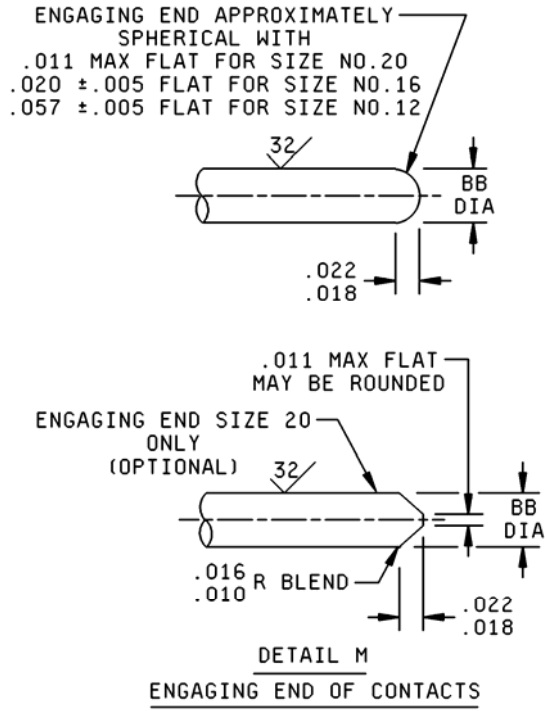


FIGURE 1. Receptacle, class H, dimensions and configurations - Continued.

MS3449D

Contact size	BB	CC	DD	HH	KK
20	.041 (1.04)	.088 (2.24)	.048 (1.22)	.188 (4.78)	.110 (2.79)
	.039 (0.99)	.061 (1.55)	.042 (1.07)	.109 (2.77)	.068 (1.73)
16	.0635 (1.61)	.116 (2.95)	.075 (1.91)	.251 (6.38)	.141 (3.58)
	.0615 (1.56)	.096 (2.44)	.069 (1.75)	.172 (4.37)	.109 (2.77)
12	.095 (2.41)	.150 (3.81)	.122 (3.10)	.251 (6.38)	.141 (3.58)
	.093 (2.36)	.130 (3.30)	.112 (2.84)	.172 (4.37)	.109 (2.77)

Shell size	A	B	D	E	F
8	.954 (24.23)	1.078 (27.38)	.403 (10.24)	.536 (13.61)	.707 (17.96)
	.923 (23.44)	1.047 (26.59)			
10	1.078 (27.38)	1.203 (30.56)	.515 (13.08)	.661 (16.79)	
	1.047 (26.59)	1.172 (29.77)			
12	1.266 (32.16)	1.391 (35.33)	.630 (16.00)	.824 (20.93)	
	1.235 (31.37)	1.360 (34.54)			
14	1.391 (35.33)	1.516 (38.51)	.755 (19.18)	.948 (24.08)	
	1.360 (34.54)	1.485 (37.72)			
16	1.516 (38.51)	1.641 (41.68)	.880 (22.35)	1.072 (27.23)	
	1.485 (37.72)	1.610 (40.89)			
18	1.641 (41.68)	1.766 (44.86)	.980 (24.89)	1.197 (30.40)	
	1.610 (40.89)	1.735 (44.07)			
20	1.828 (46.43)	1.954 (49.63)	1.105 (28.07)	1.322 (33.58)	.772 (19.61) .754 (19.15)
	1.797 (45.64)	1.923 (48.84)			
22	1.954 (49.63)	2.078 (52.78)	1.230 (31.24)	1.447 (36.75)	
	1.923 (48.84)	2.047 (51.99)			
24	2.078 (52.78)	2.203 (55.96)	1.385 (35.18)	1.572 (39.93)	.803 (20.40) .705 (17.91)
	2.047 (51.99)	2.172 (55.17)			

FIGURE 1. Receptacle, class H, dimensions and configurations - Continued.

MS3449D

Shell size	G	J	K	L	N UNEF-2A	P
8	.113 (2.87) .097 (2.46)	.378 (9.60) .358 (9.09)	.572 (14.53)	.820 (20.83)	.5625-24	.134 (3.40) .074 (1.88)
10			.697 (17.70)		.6875-24	
12			.895 (22.73)		.875-20	
14			1.010 (25.65)		1.000-20	
16			1.135 (28.83)		1.125-18	
18			1.260 (32.00)		1.250-18	
20	.148 (3.76) .128 (3.25)	.405 (10.29) .385 (9.78)	1.385 (35.18)	.920 (23.37)	1.375-18	.099 (2.51)
22			1.510 (38.35)		1.500-18	.039 (0.99)
24			1.635 (41.53)	.951 (24.16)	1.625-18	.069 (1.75) .009 (0.23)

Shell size	R	S	V	X	Max weight lbs (grams)
8	.609 (15.47)	.187 (4.75) .062 (1.57)	.204 (5.18) .144 (3.66)	.525 (13.34)	.0430 (19.52)
10	.734 (18.64)			.650 (16.51)	.0610 (27.69)
12	.921 (23.39)			.813 (20.65)	.0880 (39.95)
14	1.046 (26.57)			.937 (23.80)	.1100 (49.94)
16	1.171 (29.74)			1.061 (26.95)	.1310 (59.47)
18	1.296 (32.92)			1.186 (30.12)	.1720 (78.09)
20	1.484 (37.69)	.250 (6.35) .062 (1.57)	.169 (4.29)	1.311 (33.30)	.2110 (95.79)
22	1.609 (40.87)		.109 (2.77)	1.436 (36.47)	.2420 (109.87)
24	1.734 (44.04)		.139 (3.53) .079 (2.01)	1.561 (39.65)	.2930 (133.02)

FIGURE 1. Receptacle, class H, dimensions and configurations - Continued.

MS3449D

Inches	mm
.005	0.13
.008	0.20
.010	0.25
.011	0.28
.016	0.41
.018	0.46
.019	0.48
.020	0.51
.022	0.56
.048	1.22
.054	1.37
.057	1.45
.06	1.5
.093	2.36
.098	2.49
.216	5.49
.278	7.06

NOTES:

1. Dimensions are in inches.
2. Metric equivalents are given for information only.
3. Unless otherwise specified, dimensional tolerances shall be $.XX \pm .01$, $.XXX \pm .005$. Angular tolerances shall be $\pm 1^\circ$.
4. Polarizing stripes, color optional.
5. Insert arrangements requiring reduced diameters for raised seal barrier on outer row of contact cavities as indicated (see table I).
6. True position (TP) tolerances specified are in accordance with ASME Y14.5M.

FIGURE 1. Receptacle, class H, dimensions and configurations - Continued.

MS3449D

TABLE I. Contact cavities requiring reduced diameters (XX) for pins and sockets in outer row of contact cavities. 1/

Shell size	Insert arrangement	Contact Cavities
8	-33 & -98	A, B, C.
12	-10	C, G.
14	-12	A, B, C, D, E, F, G, H.
14	-18	A, C, E, G, J, L.
14	-19	B, D, F, H, K, M.
16	-26	A, B, C, D, E, F, G, H, J, K, L, M, N, P, R.
18	-32	A, B, C, D, E, F, G, H, J, K, L, M, N, P, R, S, T.
22	-41	A, B, C, D, E, F, G, H, J, K, L, M, N, P, R, S, T, U, V, W, X, Y.

1/ The reduced diameter "XX" refers to the diameters of the raised seal barriers (pin barrier rings) or lead-in chamfers (socket entry holes) to ensure proper sealing of pin and socket after mating. See MIL-DTL-26482, connector intermateability control dimensions (series 1 and series 2) figure for reduced diameter "XX" for contact size 20 only.

REQUIREMENTS:

Dimensions and configuration: See figure 1 and table I.

Connector mating: This connector mates with MS3475 and MS3476, connector plugs.

For insert arrangement: See MIL-STD-1669.

Intermateability dimensions are in accordance with MIL-DTL-26482.

Material:

Shell types A and B, 300 series stainless steel in accordance with ASTM A582/A582M and ASTM A276.

Shell type C, cold rolled steel in accordance with ASTM A108.

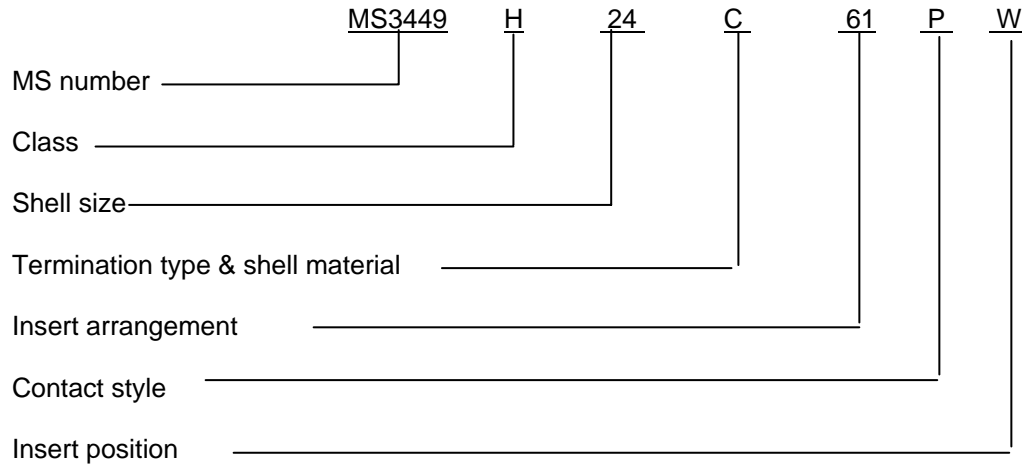
Finish:

Shell types A and B, passivated in accordance with ASTM A967.

Shell type C, .0001 inch (2.54 μ m) minimum in accordance with ASTM B545 or ASTM B339 over nickel in accordance with SAE AMS-QQ-N-290.

MS3449D

Part or Identifying Number (PIN) example:



Changes from previous issue. Marginal notations are not used in this revision to identify changes with respect to the previous issue due to the extent of the changes.

Referenced documents. In addition to MIL-DTL-26482, this document references the following:

- MS3186
- MS3475
- MS3476
- MIL-STD-1669
- ASME Y14.5M
- ASTM-A108
- ASTM A276
- ASTM A582/A582M
- ASTM A967
- ASTM-B339
- ASTM-B545
- SAE AMS-QQ-N-290

MS3449D

CONCLUDING MATERIAL

Custodians:

Army – CR
Navy – AS
Air Force – 11
DLA – CC

Preparing activity:
DLA – CC

(Project 5935– 4656– 011)

Review activities:

Army – AR, AV, MI
Navy – EC, SH
Air Force – 99

NOTE: The activities listed above were interested in this document as of the date of this document. Since organizations and responsibilities can change, you should verify the currency of the information above using the ASSIST Online database at <http://assist.daps.dla.mil>.